

WHITMOYER

FORD • MERCURY
YOUR FARM & PERSONAL
TRUCK HEADQUARTERS

**97 FORD
CONVERSION
VAN**

High Top, Burgundy,
TV, VCR, PW & L,
Only 40,000 Miles



**99 FORD
RANGER
SUPER CAB 4x4**

Black, XLT, PW & L, CD
AC, Only 6,500 Miles
\$19,900



95 FORD F150
4x4, Super Cab SLT,
Dark Green,
PW & L, Auto,
Cassette,
New Truck Trade

**97 FORD F150
SUPER CAB**
5 Speed, AC,
Cassette,
44,000 Miles,
Burgundy



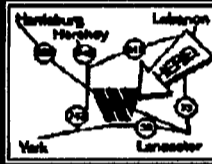
97 FORD F150
V6, Auto, AC,
Blue & Silver,
1 Owner -
28,000 Miles
\$15,500



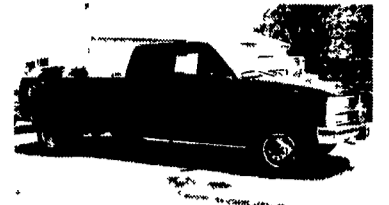
**99 FORD RANGER
SUPER CAB 4x4**
XLT, PW&L, A/C,
Cassette, Only
25,000 Miles
\$19,100

Call for details... we probably have what you are looking for.

Whitmoyer
FORD • MERCURY
Rt. 283 & Rheems/E-town Exit • Elizabethtown
Sales Hrs: M-F 8:30 am - 9 pm • Sat. 9 am - 5 pm
717-367-7022 or 1-800-267-2088
e-mail us at: whitmoyerford@aol.com



97 GMC K2500 SL 4x4
350 Vortec, 5 Spd., AM/FM, No Air,
8600 GVW, 4 10 Rear, Local PA 1
Owner, 38,000 Mi., Sandstone
\$16,900



**97 CHEVY K3500 SILVERADO
EXTENDED CAB**
4x4, Dually, 454 Vortec, 5 Sp., A/C, AM/FM/
CD, Cruise, Tilt, PW, PDL, 10,000 GVW,
4 10 Ltd Slip Rear, Black, 34,000 Mi
\$23,500

MARTIN'S AUTO SALES

1025 W. Main St. New Holland, PA 17557
(717) 656-6621

**TRUCK CAPS • BED LINERS
COMPLETE SERVICE DEPARTMENT**

Apple Auto Sales, Inc.
Preowned Cars & Trucks
Route 30 - Lincoln Highway East, Gap, PA 17527
717-442-9700 • 717-299-9900 • FAX 717-442-3140
Email contactus@appleautosales.com Web www.appleautosales.com



1997 Ford F-250 X Cab
4x4, 7.3 Power Stroke
Diesel, AT, PS, PB, PW,
PL, PM, Cruise, Tilt, A/C,
Dual Tanks, Cass,
8 Ft Bed, 8800 GVW,
Red & White

1987 GMC Sierra Dually 4x4, 6.2 Diesel, 5 Sp., PS, PB, PW, PL, Cruise, Tilt,
Dual Tanks, Cass, A/C, Sliding Rear Glass, 10,000 GVW
1997 Dodge Ram X-Cab Dually, 4x4, 5.9 Cummins Diesel, AT, PS, PB, PW,
PL, Cruise, Tilt, Foglights, P Seat, A/C CD & Cass, 11,000 GVW, Black &
Silver
1996 Dodge Ram X-Cab SLT, 318 V8, AT, PS, PB, PW, PL, PM, Cruise, Tilt,
Delay, Tow Pkg., Cass, A/C, Sliding Rear Glass, Fog Lights, 24K Miles
1999 Ford F-350 4 Door X-Cab, 4x4, Dually, Triton V10, 8' Bed, AT, PS, PB,
PW, PL, PM, Cruise, Tilt, A/C, AM/FM Cass., 6,500 Miles
1999 CHEVY 3500 CUBE TRUCK, 350 V8, AT, PS, PB, Tilt, AM/FM/Cass.,
A/C, Dual Tanks, 11,000 GVW 12 Ft., box w/storage. (2 to choose from)
1999 Dodge Ram 3500, Dually 4x4, 10' Dump, Cummins 6 Cyl., 5 Spd., PS,
PB, AM/FM/CD, A/C w/Plow & Salt Spreader
1999 Chevy Extended Cargo Van, 5.0 Vortec V8, AT, PS, PB, A/C
7,300 GVW

LIFETIME FREE INSPECTIONS • BUY & SELL

7511 Allentown Blvd.
Harrisburg, PA 17112

**75 TRUCKS
IN STOCK**

**AFFORDABLE
CARS AND TRUCKS, INC.**

717-652-1925
FAX 717-652-4888

www.affordablecarandtruck.com

"You Gotta Believe!!"

Exit 27, Rt. 81; Rt. 22 East of Harrisburg; 3 Miles North of Hershey

**93 Ford F250
Super Cab 4x4**
7.3 Diesel AT, A/C,
PS, PB, PW, PL,
C, T, Cass.,
Over 100K
\$13,995



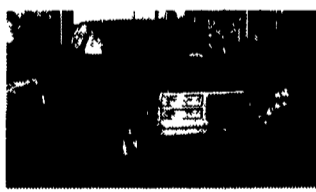
**95 Dodge
Ram 2500**
Cummins Turbo
Diesel, 4x4, SLT
Laramie, AT, A/C, Most
Options, 111K Miles,
Excellent Shape
\$14,995



95 Ford F250 XL
4x4, 8600 GVW, Extra Nice Trucks,
Choose From 5-Spd or Automatic,
Fully Loaded, Only 78,000 Miles
\$10,995 & Up



93 Chev 2500 H.D.
Silverado, 4x4, 350, AT,
8,600 G.V.W. A/C, Most Options,
Mint Cond., 108K Mi
\$10,995



94 Chev 1500 Silverado
4x4, Ext. Longbed, All Black, 350 +
Loaded, Extra Clean, 100K Mi.
\$12,995



89 Ford F350 XLT
Lariat, 4x4, 351, 5-Speed,
Black/Red, All Options,
Mint Condition, Miles Good
\$8,995



**93 Ford F250 4x4
XLT Lariat H.D.**
International Diesel, AT, AC, PW, PL,
Stereo and more, 170K Miles, Well
Maintained - Like New Shape,
All Highway **\$8,995**



88 Chevy Scottsdale 4x4
Ext Cab, Longbed, 350 V8, Auto, A/C,
Loaded! 100K
\$8,500
\$7,995



86 Ford F250 XLT
4x4, H D 8600 GVW, 1-Owner, New
Jasper 351 V8, AT, 2-Tone Paint,
Western Angle Plow, Mint Cond Look
\$7,495



86 Ford F250 4x4
Supercab, H D, 7.3 International
Diesel, AT w/Shift Kit, A/C, All
Power, Good Miles & Condition
\$7,495



87 Ford F250 XLT Lariat
4x4, Super Cab, 5.8 Gas,
Fully Loaded, AT, A/C, PW T,
More, Mint Condition, 100k Mi
\$7,995

CHEROKEE TRAILERS **Bison** **MG TEX**
Phoenix TRAILERS **Aluminum WORTHINGTON Trailers**



**4-1/2 x 8' Worthington Tilt
Bed, All Aluminum,
Light Duty. Many Other
Styles Available**



**Cherokee Gooseneck
3 & 4 Horse Trailers,
All Aluminum,
Ready To Go**

FINANCING AVAILABLE - TRADE-INS ACCEPTED



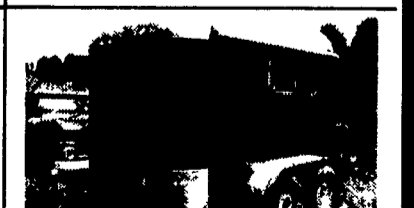
**2-Horse Bumper Pull
Trailers In Stock
Bison 2-Horse Bumper Pull
Trailers In Stock**



**50 Enclosed Trailers
In Stock**



**24' Cherokee Gooseneck
8' Wide, 7' High, 7,000 Axles,
2 Center Dividers - In Stock!
\$12,500**



**1986 Glick 2 Horse \$1,300
Also Available 1984 Shoop
2 Horse \$800**

YARNALL'S EQUIPMENT CO., INC.

4171 Horseshoe Pike (Rt. 322) Honey Brook, PA 19344
(610) 273-9200 • 1-888-900-7669
Open 6 Days - Till 7:00 P.M. Tuesdays