



RV \* UTILITY \* LIVESTOCK \* MARINE

Distributor For  
PUTNAM Hitch Products  
KINEDYNE Cargo Control  
REDLINE Trailer Parts



**Class 2, 3, 4 & 5 Hitches**  
From \$81.43 to \$118.94

**Hitch Hand**

Add Over 3' to your pickup bed  
**\$136.49**

**KINEDYNE CARGO CONTROL**

**2" x 27' Ratchet Strap**

- 10,000 lb. Breaking Strength
- 3,335 lb. Working Range

**\$17.00 ea. or box of 10 - \$159**

**The Outbacker**

All purpose carrier  
great for deer season!  
**\$86.25**

**Putnam Hitchin'Post™ Bicycle Carrier**

Designed to fit square-socket receivers  
3, 4 & 5 bike models

**From \$89.39 to \$135.53**

**Combination Fifth Wheel and Gooseneck Assembly**

- 5th Wheel head pivots in all directions
- Cushioned attachment for smoother, quieter towing
- Easy hookup • Fast conversion

**\$489.43 Complete**  
**\$289.38 Gooseneck Only**



**DAVID A. FISHER TRAILERS**

5509 Lincoln Highway, Geo. PA 17527

**717-442-5098** Dealerships Available



**USED 1992 VOLVO W1A64TTES** conv w/48" double bunk sleeper, Cat 3406B 425 HP eng w/brake, 13 spd Fuller trans, PS, 202 wheel base, 3 73 gear ratio, color white, dual 125 alum tanks, 24 5 Tireson all alum wheels, Holland air slide fifth wheel  
**Stock #510683**



**1989 FORD Model 700 Cargo Van**, White In Color, 228 Wheel Base, Ford 16TD Engine w/170 HP, Ford 5 Spd Transmission, 4 10 Gear Ratio, PS, Spring Suspension, Dual 40 Gal Steel Tanks, All Steel Wheels w/22 5 Tires  
**Stock #M03340**



**USED 1995 FREIGHTLINER FLD120645 T** conv w/70" flat top sleeper, Cummins N14 350HP eng w/brake, Meritor 9 spd trans, PS, 230 WB, 2 93 gear ratio, color silver, dual 120 alum tanks, 22 5LP tires on all steel wheels, Fontaine air slide fifth wheel, air ride suspension  
**Stock #771259**



**USED 1993 FREIGHTLINER FLA104064T** cabover w/double bunk sleeper, Detroit series 60 350HP eng., Fuller 9 spd trans, PS, 219 wheel base, 3 36 gear ratio, color white, dual 150 alum tanks, 22 5LP tires on all steel wheels, ASF fixed fifth wheel, air ride suspension  
**Stock #420885**



**1999 NEW UNIT FREIGHTLINER, FC70**, white, COE cargo van, 225" wheel base, Cummins ISB engine, 215 HP, no engine brake, Fuller 6 spd transmission, all steel wheels, 3 90 gear ratio, 1-45 gal steel fuel tank  
**Stock #A46831**



**2000 NEW UNIT FREIGHTLINER FL80**, white, conventional straight truck, 204 wheel base, Caterpillar CFE 250 HT engine, 250 HP, no engine brake, Fuller 6 spd transmission, all steel wheels, 5 29 gear ratio, 1-100 gal fuel tank. Several in stock! 26,000 to 33,000 GVW  
**Stock #F40499**

Since 1967  
**DUTCHMANS FREIGHTLINER**  
PA Turnpike Exit 21, Denver, PA 17517  
**Phone (717) 336-2867 or (800) 769-9887**



**94 FORD F350 4x4 FLATBED**  
460 V8, At. A/C, 77,000 Miles, Red, Dual Rear Wheels



**99 FORD F350 CREW CAB 4X4**  
Power Stroke Diesel, XLT, AT, A/C, Most Options, Alloy Wheels, Maroon & Silver, 23,000 Miles #F949



**96 FORD F350 4x4**  
351 V8, 5-Spd., XL Trim A/C, AM/FM, Dk. Green, #F964



**93 FORD F350 CREW CAB DUALLY**  
5-Spd., 7.3 Diesel, XL Trim, A/C, C, T, 75,000 Miles, Green & Silver - Very Nice Condition - #F954



**90 FORD F150 SUPER CAB 4x4**  
6 Cyl., 5 Spd., XLT, A/C, Most Options 84,000 Miles, Blue & White, #F965



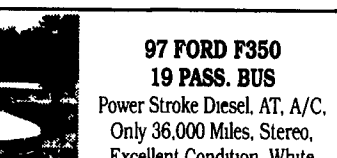
**95 DODGE RAM 2500 4x4 H.D.**  
Cummins Turbo Diesel, AT, AM/FM, Cass, 69,000 Miles, Green, #D291



**98 CHEV. 3500 CREW CAB DUALLY**  
6.5 Turbo Diesel, AT, A/C, Silverado - Most Options, Leather, CD Player, Power Seats, White, 29,000 Miles, #C565



**96 DODGE RAM 2500 4X4**  
ST Trim, Cummins Turbo Diesel, 5-Spd., A/C, Cass., 67,000 Miles, Black #D305



**97 FORD F350 19 PASS. BUS**  
Power Stroke Diesel, AT, A/C, Only 36,000 Miles, Stereo, Excellent Condition, White #F962



**96 FORD F250 SUPER CAB**  
H.D. 4x4, AT, A/C, 351V8, 44,000 Miles, Dk. Green w/Silver Sport Tape #F812



**93 DODGE RAM 3500 CLUB CAB DUALLY**  
Cummins Turbo Diesel, LE Pkg., AT, A/C, Most Options, 88,000 Miles #D287



**89 FORD F800 w/HAULER BODY**  
Diesel, A/C, 5 Spd., 89,000 Miles, 28,000 GVW Very Good Condition, Ready to Tow



**89 FORD F350 CREW CAB DUALLY**  
XLT, 7.3 Diesel, AT, A/C, Most Options, Blue, #F851



**97 FORD F350 4X4 XLT**  
Power Stroke Diesel, AT, A/C, Most Options, 65,000 Miles, Burgundy & White, #F967



**95 FORD F250 SUPER CAB 4X4**  
Power Stroke Diesel, XLT, AT, A/C, Most Options, 73,000 Miles, Black & Silver, #F886



**95 CHEV. KODIAK DUMP**  
366, 4 Spd., Allison Trans., AT, PS, PB, 25,950 GVW, Good Tires and Inspected, Ex. Cond. Ready To Work



**95 FORD F250 SUPERCAB 4x4**  
Power Stroke diesel, XLT, AT, A/C, Most Options, 148,000 Miles, Dk Blue - Looks & Runs Great - #F956



**95 FORD F350 SUPER CAB DUALLY**  
XLT AT 460 EFI A/C Most Options 57 000 Miles, Dk Green #F871



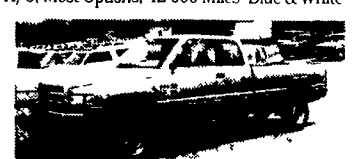
**95 FORD F350 4x4 EBY ALUM. FLATBED DUMP**  
460 V8, AT, Red, Dual Tanks Gooseneck Hitch, 39,000 Miles Excellent Condition



**97 FORD F250 SUPER CAB**  
4x4, Power Stroke Diesel XLT AT A/C, Most Options Tow Pkg., Alloy Wheels, Gold Frost 37 000 Miles #F947



**97 FORD F350 CREW CAB DUALLY**  
Power Stroke Diesel, XLT w/Conversion Pkg AT A/C, Most Options, 42,000 Miles Blue & White



**96 DODGE RAM 2500 4X4**  
Cummins Turbo Diesel, AT A/C Cass., Aqua Blue, 47,000 Miles, Excellent Condition #D319



**95 FORD F350 SUPER CAB DUALLY**  
XLT AT 460 EFI A/C Most Options 57 000 Miles, Dk Green #F871



**85 FORD F350 4X4**  
6 9 Diesel, AT, A/C, Cass, 9,000 GVW 86,000 Miles, White #F963

Bobby Gerhart's

**Truck World**

Mon. - Fri. 9-8, Sat. 9-3

2400  
E. Cumberland St.  
Rt. 422  
Lebanon, PA  
17042  
**717-273-7995**

OVER 120 TRUCKS

Preferred Warranties Available