

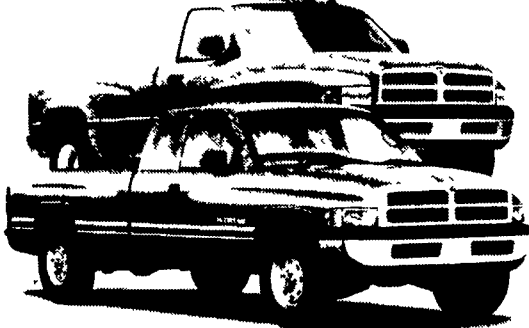
# Providence

Chrysler  
Plymouth  
Dodge  
Jeep



Part of the Lancaster County Motors Family of Dealerships

## DIESEL DAYS!



**NEW 2001 DODGE RAM 3500 & 2500**  
Many to Choose From!

### PRE-OWNED SPECIALS!

- '99 Dodge RAM 2500 ST REG CAB 4x4  
Black, auto, air conditioning, AM-FM cassette, rear slider
- '99 Dodge RAM 2500 SLT QUAD CAB 4x4  
Automatic, air conditioning, Turbo-Cummins Diesel, tow package & more!
- '98 Dodge RAM 1500 REG CAB 4x4  
Automatic, air cond., rear slider, bedliner & more!
- '98 Dodge RAM 2500 SLT CLUB CAB 4x4  
Cummins Turbo Diesel, auto, air, pwr windows & locks

### New 2001 DODGE

### RAM REGULAR CAB 4X4

5 speed, air conditioning, AM/FM cassette, bedliner, plus much, much more! #10639

MSRP: \$23,010

-\$2,200 Providence Discount,

\$2,000 Factory Rebate \$500 Farm Bureau Rebate

**NOW ONLY \$18,310!**

## ALIGNMENT SPECIAL

- Any Chrysler, Plymouth, Dodge or Jeep Car or Van
- 2 wheel.....\$44.95
- Car or Van
- 4 wheel.....\$49.95
- Any Dodge Truck.....\$45.95

Offer expires 9/30/00

### SERVICE HOURS:

MON, TUES, THURS FRI: 7:30AM-5PM

WED: 7:30AM-7PM

SATURDAY 8AM-NOON

**SALES HOURS:** MON-FRI: 9AM-9PM  
SATURDAY 9AM-4PM  
**Call Toll-Free 877-288-9996 or Phone 284-9900**  
**804 Lancaster Pike, Quarryville Rt. 272, Just South of Lancaster**  
[www.providenceautos.com](http://www.providenceautos.com) e-mail: [Vehicles@lannews.infi.net](mailto:Vehicles@lannews.infi.net)

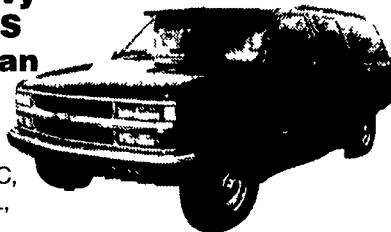
## THE HONDRU EXPERIENCE

OVER 200 TRUCKS AVAILABLE FROM OUR 4 DEALERSHIPS

### E-TOWN CHEVROLET

Oldsmobile Pontiac  
Route 230 E-Town • 717-361-7776

### 95 Chevy 2500LS Suburban



V-8, Auto, AC, PS, PW & L, T & C

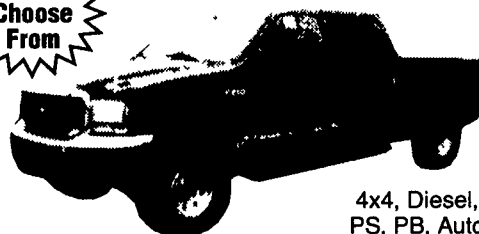
- 98 Dodge Ram 3500 Quad Cab, SLT, Cummins Diesel
- 98 Dodge Dakota Club Cab, SLT, V6, Auto, AC, T&C
- 98 Dodge Ram 2500 Quad Cab 4x4, Diesel, SLT, PW&L AC, T&C
- 98 GMC Sierra SLE Ext Cab 4x4, Auto, AC, PW&L, T&C
- 97 Dodge Ram 1500 Club Cab, V8 Auto, AC, PW&L, T&C
- 97 Pontiac Grand Am GT Coupe, 5 Speed
- 97 Dodge Dakota Sport Club Cab 4x4, V-8, 5 Speed, AC, PW&L, T&C
- 95 Chevy K1500 Ext Cab, V-8, Auto Equipped

### PHILLIPS FORD

Route 72 Manheim • 717-665-3551

### 2000 FORD F250 SUPER DUTY CREW CAB

10 To Choose From



4x4, Diesel, PS, PB, Auto

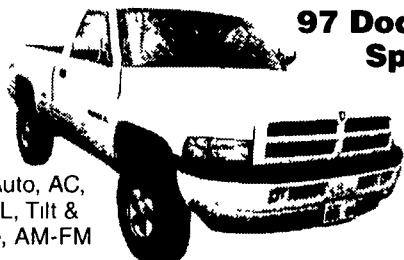
- 97-98 Dodge Dakota Club Cab 4x4
- 97-99 Ford Ranger
- 98 Ford E150 Pass Van
- 96 Ford F450 Cab & Chassis, Diesel, AC, Only 53,000 Miles
- 96 Chevy K3500 Crew Cab, Dually
- 96 Ford Bronco, V8
- 97 F150 S/C, 4x2
- 98 F150 R/C 4x2

- 2 to Choose From
- 6 to Choose From #OPO58A
- #OF929A
- #OFO46A
- 3 to Choose From
- #OF739A
- #OPO46A

### E-TOWN DODGE

Route 230 E-Town • 717-367-6644

### 97 Dodge Sport



V-8, Auto, AC, PW&L, Tilt & Cruise, AM-FM

### 91 Chevy C3500 Crew Cab



w/Utility Box, V-8, Auto

### MANHEIM CHRYSLER PLYMOUTH GMC

Route 72 Manheim • 717-665-2473

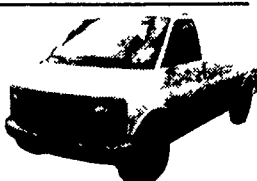
### 1997 GMC Yukon SLT

V-8, Auto, "Equipped"



### 2000 CHEVY EXPRESS C2500 Cargo Van

V-8, Auto, PS, PB, AC, A Work Horse!



### 1950 Ford Pick-Up



Runs Good, Looks Great "Redone"

## LOADS OF USED PICKUPS CALL ANY STORE FOR DETAILS

Email - [hondruauto@aol.com](mailto:hondruauto@aol.com)

OVER 20 CHASSIS IMMEDIATELY AVAILABLE FOR BODY INSTALLATION AT OUR LOCAL BODY COMPANIES!

## TIRE SALE

- Used Truck Tires..... As Low As \$50
- Good Selection in Most Sizes.
- New Trailer Retreads Size 11R22.5 or 11R24.5..... \$125
- Eliminate the Middleman! Buy Direct from our Retread Shop and Save \$\$!
- Good Supply of Retreads In Stock or we can Custom Retread your Tires to meet your Hauling Needs.
- Our Family Business Has Been Retreading Tires for 35 Years.

We Know How To Do It Right!



## WEAVER'S TIRE SERVICE

Ephrata, PA

717/733-8775

40' Miller drop frame, open top van, good canvas, 10000x15 tires. 717-940-9541

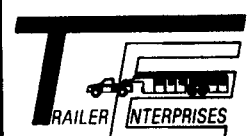
1992 Dodge 250 LE, pickup, 4x4, green/tan, Cummins dsl, auto, 67K, brand new 8 1/2' Western Proplow, \$16,800. 201-666-3003

1986 GMC Mason dump, blue, 350, 2WD, 4 spd, orig 53K, great shape! \$5900. 201-666-3003

1985 Int. tractor truck, 550,000 actual mi, 13-spd, large sleeper, complete overhaul at 350,000 mi, good tires, \$5500. 717/762-1064.

Wanted: Ford pickup truck, '54, 1/2 ton, any cond. 908-369-7975

New 21' gooseneck trailer w/adj. beaver tail, 14,000lb gvw w/6x8 deck-over gooseneck. 717/938-9029.



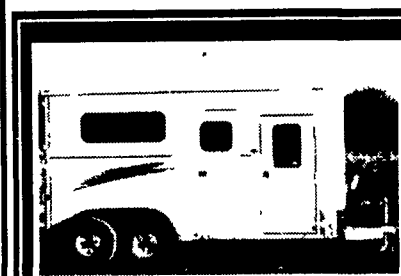
## TRAILER ENTERPRISES, INC.

ON SITE - FULL SERVICE HITCH & REPAIR FACILITY  
MAKING SURE YOU GET THE BEST IN THE INDUSTRY!

- X GOOSENECK FLATBEDS
- X CARGO TRAILERS
- X AUTO CARRIERS
- X LAWN SERVICE & UTILITY
- X INDUSTRIAL & EQUIPMENT

• HOURS •

Monday - Friday 8 to 5; Saturday 9 to 12



2-HORSE PULL TYPE W/ALUMINUM SKIN AND DRESSING ROOM - \$7,150



MORITZ 2-HORSE SLANT W/DRESSING ROOM - \$3,895

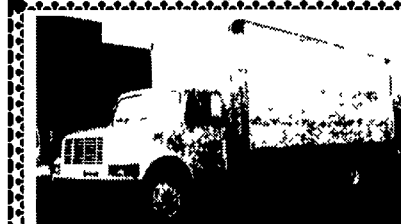


MORITZ 3-HORSE SLANT W/DRESSING ROOM - \$4,995



"REVVIN' TO TAKE CARE OF ALL YOUR TRAILER NEEDS"

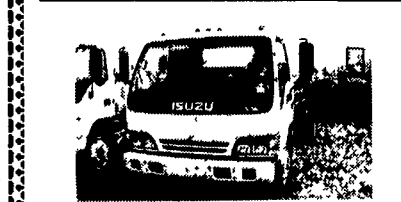
TRAILERS ARE OUR BUSINESS!



1996 INTERNATIONAL 4700, DT466, 175 HP, 5 Spd. 25,500 GVW, 24 Ft Van Body 5 Spd or AT. LOW MILES.



98 FE 2620 HINO DIESEL 25,950 GVW, 6 Speed, 24 Ft Van Body, Under 20,000 Miles Call Keith for Details



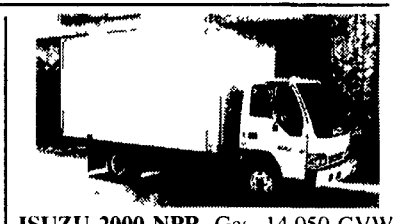
New 1999 Isuzu NPR, 16,500 GVW, 175 HP, Auto, Air, Stereo BLOWOUT PRICE Call Keith



1990 FORD LN 7000, 6.6L 185 HP Diesel, 6-Spd, 30,000 GVW, 16 Stake Body, 257,000 Miles



2000 ISUZU FTR, 200 HP Diesel, 6 Spd 25950 GVW, Lots of Options, Set up for 24 Ft Body or Will Change Wheelbase



ISUZU 2000 NPR, Gas, 14,050 GVW, 250 HP, V8 Engine, Auto Trans, A/C, AM/FM Cass, 14' Van Body GREAT PRICE OR LEASE!

LOTS OF OTHER ISUZUS IN STOCK

WE DELIVER ANYWHERE!!!



## FIVE STAR ISUZU

New Toll Free - 1-877-54-ISUZU Keith Eshelman (47898)