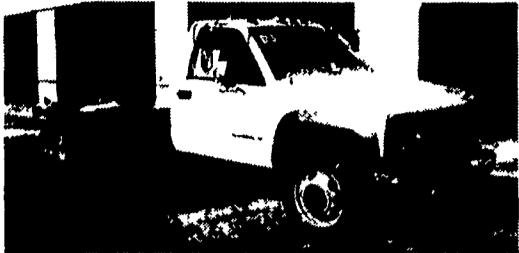


**CHEVROLET** **Geo** **Oldsmobile** **PONTIAC** **CHEVY TRUCKS**  
**O U T T E N**  
**TOTAL TRANSPORTATION CENTER**



**2000 CHEV 3500 CAB & CHASSIS**  
 AT, A/C, 15,000 GVW, Stock #33707



**1999 CHEVROLET SUBURBAN 2500**  
 4x4, 454 V8, AT, Dual A/C, Most Options,  
 Tow Pkg., 16,000 Miles **\$30,995**

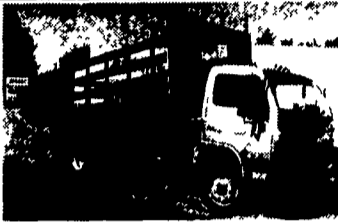
**Outten Hamburg Rt. 61, Hamburg PA**  
**1-800-451-2333 • 610-562-2216**



**1994 Nissan UD 1400,**  
 5-Speed, 14' Stake Body,  
 14,000 lb. GVW  
**\$10,500 \$9,900**



**2000 UD #2000**  
 19,500 GVW, 20' Steel Rollback  
 with Wheel Lift, Loaded  
**\$47,350**



**1999 (New) Nissan UD 1800,**  
 175 HP, 6-Speed,  
 16 ft. Stake Dump Body  
**\$31,900**



**1992 GMC Topkick,**  
 20,600 GVW, 5 Speed Cat  
 Engine, A/C in Cab & in  
 Insulated Body with Racks  
**\$8,900**



**1994 Ford E150**  
**Conversion Van**  
 Loaded, TV, VCR, AT, Dual Air,  
 V8, Excellent Cond., Trailer Hitch



**1995 UD #2600**  
 25,995 GVW, 18 Ft. Van Body  
**\$24,900**

**INTERNATIONAL** **CENTRAL GARAGE, Inc.** **UD TRUCKS**  
 South 2nd St. (Rt. 419) Womelsdorf (Berks Co.) Pa  
**610-589-4581 or 800-860-4581**

**Binkley & Hurst Bros. Inc. Offers**  
**BLOW OUT CLEARANCE**  
**ON NEW TRUCK BODY**  
**COVER TARPS**

**CHECK OUT THESE HARDY NEW**  
**TARP KITS - "COVER YOUR TRUCK"**

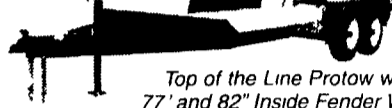
NE 4493 NEW 18 FOOT SHURCO SHUR TRAC  
 FRONT TO REAR ROLL UP - WAS OVER \$680  
**CLEARANCE - \$285 PLUS INSTALLATION**

NE 5199 NEW SHURLOC SIDE-TO-SIDE  
 ROLL UP - WAS \$1,280  
**CLEARANCE - \$425 PLUS INSTALLATION**

**SEE BINKLEY & HURST BROS. INC.**  
**FOR TRAILERS, FARM TRUCK BODIES,**  
**PARTS & ACCESSORIES & HITCHES**  
**WITH INSTALLATION SERVICE**

**NEED A TRAILER AND WANT TO KEEP YOUR**  
**COST DOWN? SEE BINKLEY & HURST BROS.!**  
**NEW - DEMO - USED**

Skid Loader Models *Optional Slide In Ramps*



*Top of the Line Protow with*  
*77" and 82" Inside Fender Width*

Deck Overs *Also Miscellaneous Truck Bodies*



- 1 New Pequea Deck Over Model 716 Trailer, 2-5/16" Ball Hitch, 14 Flat 3 Beavertail, 10 000 GVW **SPECIAL \$2,900**
- 2 1987 Ford XL350 Truck, Dual Wheel 5 Speed 460 Fuel Injected A/C 85,000 Miles, with 12 Flatbed and Trailer Hitch **\$6,300 PRICE REDUCED! ONLY \$4,980**

**BINKLEY-HURST BROS. INC.**

133 Rothsville Station Rd.  
 P.O. Box 0395, Lititz, PA 17543-0395  
 (717) 626-4705 1-800-414-4705 Fax (717) 626-0996  
 www.binkleyhurst.com

Grain Trucks: '77 Int w/ grain sides & dump, 28,000GVW. '79 White 10 wheeler, 6V92 Def eng w/Jake brake, complete rebuilt eng, new radiator, 23' bed w/5' sides, roll tarp & dump. 717-862-3970.

'87 Suburban GMC, 4WD, reliable, roof rack, new tires, towing pkg, running boards, needs paint, 160K mi. \$3500. Call 610-286-1655 days 610-942-4370 eves

85 F-250 Utility Body, Rebuilt Motor & Trans. \$2500. 717-246-0936

1980 C-65 Chevy grain truck 15/Ton hoist, 15' grain body, 5+2 rear, P.S. 27,500 GVW, good cond. Asking \$3900. Call Eves, 717-786-1119

'84 C30 Chevy cube van, auto, PS, all new PB system, rebuilt 350, dual wheels, \$3500. 570-427-8877

1990 Ford F150, 5 speed, 6 cyl., engine, recent tires, reliable, excellent running truck, 125 K miles, \$3,000. Days 610-286-1655, eves. 610-942-4370.

Two 1987 Utility Trailers, 48 ft., TK SBll Max, Super ride. 717-665-4415.

1993 Super city aluminum dump box, 20 1/2 ft, 72" sides, complete w/hoist, good cond. LanCo, 717-548-3006.

'95 GMC SL 1500 4x4, 4.3, 5 spd, PS, PB, AM-FM, 6,100 GVW, 44,000 miles, teal, \$9,950. 717-733-2873

'95 Chevy Cheyenne 2500, HD, 3/4 ton, 350 auto, PS, PB, AM-FM, 8,600 GVW, dark blue, \$7,950. 717-733-2873

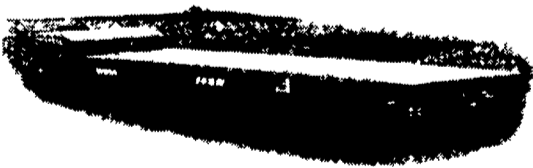
'91 Chevy Silverado 1500 4x4 Suburban, 350, auto, PS, PB, PW, PDL, cruise, tilt, air, 8 pass., towing package, 2 tone blue, 92,000 miles, excellent condition, \$10,900. 717-733-2873

**NORTH EAST ENTERPRISES**

**WORLD'S LARGEST STOCKING**  
**LANDOLL And TRAIL-EZE DEALER!**  
**SALES - SERVICE - PARTS - RENTALS**



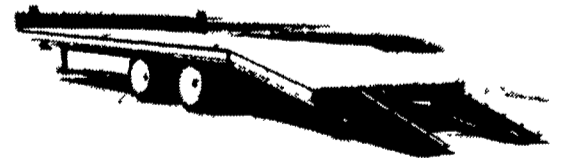
**Stop In & See the New Limited Edition Fontaine Specialized LP50**



**New 2000 Landoll 660A 48' & 53' Traveling Axle Trailer, Many Different Options In Stock!**



**2000 Trail-Eze 20 & 25 Ton Heavy Duty Tilt Deck Trailer, Pintle Hitch, Air Brakes, In Stock Now!!**



**2000 Trail-Eze 10 Ton Ramp Trailer, 24' Deck (19' Flat + 5' Beavertail), Electric Brakes, Pintle Hitch, In Stock!**



**2000 Trail-Eze 20 Ton Sliding Axle - Tilt Deck Trailer, Pintle Hitch Trailer. 30' Deck, Air Brakes, In Stock!!**



**New "2000" Landoll 323AG-48 Detachable 35 Ton Air Ride, 28x102" Drop Side with 24" Pull-Out Side Extensions, Self-Contained.**



**New Fontaine Specialized 35, 50 & 55 Ton Detachable Gooseneck. Many Options Available. Call For Your Best Price.**

**CALL TOLL FREE 1-877-526-3655**

**ASK FOR WAYNE BROWN**  
**E-MAIL: wayne@neent.com**