

J.L. HOLLINGER & SONS

Construction Equipment Sales

Manheim, PA 17545 After 6 p.m.

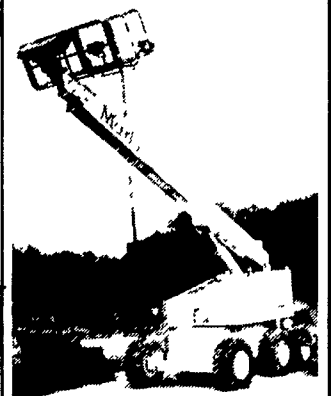
717-664-2444 717-664-2637



'94 CASE 9010 LONG STICK, V. Good, 3500 Hrs. Clean & Original \$36,500



'95 JOHN DEERE 750C ROPS, 6 Way Blade, OROPS, 4600 Hrs., V Good \$69,000



'87 MARKLIFT 62, 6x4, Gas Dual Furl, Very Good \$16,500



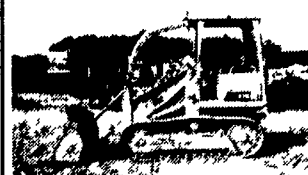
'87 TEREX 2366 6x6 Deutz Dsl. \$39,500



'87 BOBCAT 743 Dsl., Aux. Hyd. \$7,200



'95 RAMME P33/24 Dsl. Vib., Trench Roller \$6,500



'93 CAT 931C Series II, OROPS w/Sweeps, GP Bucket \$22,500



KIOTI 2214 4x4 w/Loader, 3 Pt. PTO \$7,000



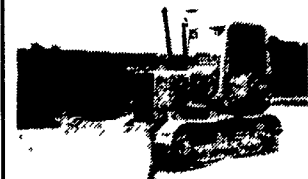
'78 JD 770A MOTOR GRADER, EROPS, 14' Blade, Front Scarfire, Ready To Go \$20,000



'94 CASE 1840 Cummins Diesel, Good Tires, Aux. Hydro's, Low Hrs. \$11,500



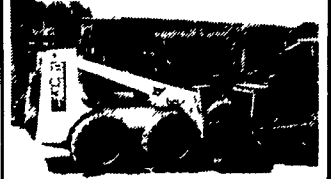
'96 JOHN DEERE 648G Cab, Air, Winch & Grappler, New Rubber \$65,000



'86 JOHN DEERE 550B 6-Way, OROPS, Long Track \$22,500



'87 JOHN DEERE 444D EROPS, G.P. Bucket, Good Cond. \$27,500



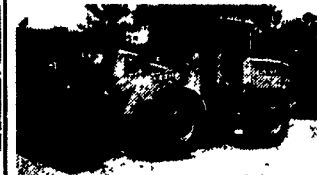
'97 BOBCAT 853 800 Hrs., Aux Hyd., Like New \$10,900



'87 CAT D25C Haul Truck, Good Cond., 25 Ton \$47,000



'83 TIMBERJACK 380A Grapple Skidder, w/Winch, V. Good Cond. \$13,750



'97 JOHN DEERE 544H Cab, G.P. Bucket, 20.5x25 Tires, Low Hr. Machine \$85,500



'94 THOMAS T-133 w/Aux. Hydro, 60" Bucket w/Teeth \$6,950



'94 CAT 325L Wide Pads, Long Stick 42" Bucket, V. Good \$74,500



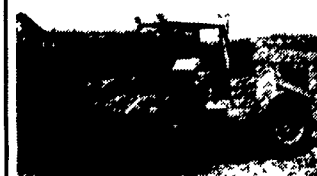
'83 JOHN DEERE 550A 6-Way Blade \$16,500



'95 CASE 650G 6-Way, Low Hrs., Very Good \$37,000



'88 JOHN DEERE 210C Loader, Landscaper w/Box \$13,500



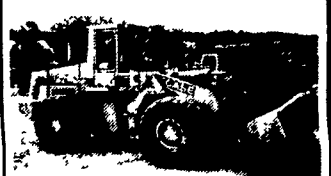
'82 BOMAG BG 170 D 72" Drum Dirt Roller \$12,500



'84 CAT 953 LGP OROPS, G.P. Bucket, Good Undercarriage \$33,500



'88 CAT 963 LGP EROPS, G.P. Bucket, Very Good Cond. \$50,000



'94 CASE 821B EROPS, G.P. Bucket, 3rd Valve \$65,000



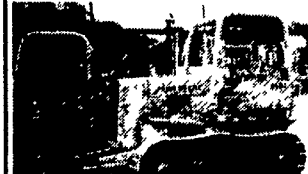
'96 CAT 910F EROPS w/Air, Like New \$39,500



'88 FURUKAWA W-150-II 2 1/2 Yard Bucket, 20.5x25 G.P. Bucket - \$15,500



CAT 953 LGP OROPS, Canopy, GP Bucket \$36,500



'87 JOHN DEERE 450E LT ROPS, 6-way Blade \$20,000



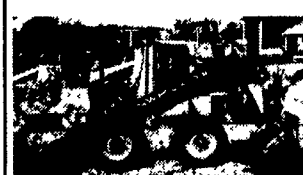
'93 BOMAG BW 142 Drum Pride, Low Hrs. \$13,500



'89 JD 555G, OROPS, G P Bucket, w/Backhoe Att \$29,500



'96 JOHN DEERE 310D Turbo, 4WD, Cab, Ext. Hoe, 4-in-1 Bucket, Low Hrs. \$33,500



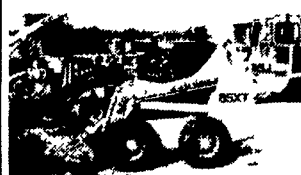
'91 NEW HOLLAND L-785 Dsl., Aux. Hyd. \$8,500



'86 CAT CS 553 Dirt Compaction Roller \$35,500



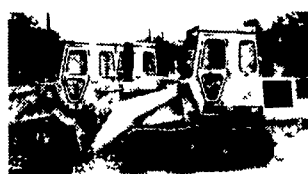
'89 KOMATSU PC-150LC-3 8'6" Wide, Plumbed w/Hammer Hydros, Low Hrs., Local Trade \$39,000



'98 CASE 85XT ROPS, Aux. Hyd., New Rubber, 800 Hrs \$20,500



DUO PAC DIRT COMPACTION ROLLER, 54 Drum, Diesel \$10,500



'87 CAT 953 LGP G.P. Bucket, Cab, Low Hrs., Very Good Cond \$45,500



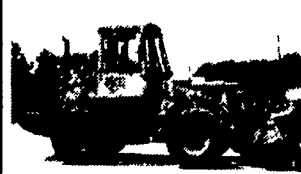
'85 CAT 953 LGP Canopy, G.P. Bucket, Cleaned & Painted \$36,500



'97 BOBCAT 873 Aux. Hyd., Low Hrs. Coupler \$15,500



'96 BOBCAT 853 Dsl., Aux. Hyd. Coupler \$11,900



'92 JOHN DEERE 444E Cab, G.P. Bucket \$32,500



ALLIS CHALMERS 7580, Cab, Air, Duals, 162HP, Air, 3 Hyd Outlets, 3 pt & PTO \$12,500



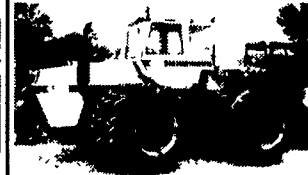
'97 JCB 506B 6000 Lb. Cap., 36 ft. Reach, Rental Return \$38,500



'92 CASE 580 SUPER K 4 WD, EROPS, Ext Hoe, Very Good \$26,000



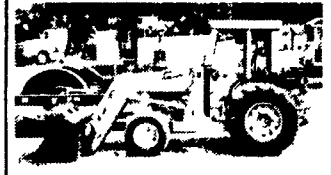
'87 CASE 585E Rough Terrain F L Mast 5000 Lbs Cap \$14,500



CASE 4490, Cab, Air, Duals, Powershift, 3 Remotes, 3 pt PTO \$12,500



'88 KOMATSU PC 150 LC-3 Long Stick, 36" Bucket \$29,000



90 FORD 445C T L, Dsl, Shuttle, Shift 2WD, ROPS 3pt \$13,500