

Eighty-Four Livestock Auction

Eighty-Four, Pa.
Monday, Aug. 21, 2000
Report Supplied by PDA

CATTLE 287...(PDA)...Compared with last week's sale...sl. cows steady, bulls mostly steady.

SLAUGHTER STEERS: few Select 1-3 62.00-62.50.

HEIFERS: few Standard 1-2 45.00-48.50.

COWS: Breakers 75-80% lean 40.00-46.00, Boners 80-85% lean 35.00-40.50, Lean 85-90% lean 31.00-36.00. Shells 30.50 & down.

BULLS: Yield Grade 1 1005-1890 lbs 48.00-58.50, Yield Grade 2 995-2480 lbs 42.50-48.50.

FEEDER CATTLE: STEERS: Medium and Large 1 360-500 lbs 88.00-105.00, 510-705 85.00-90.50, few Medium and Large 2 350-910 lbs 65.00-70.00; **HEIFERS:** Medium and Large 1 310-500 lbs 82.00-99.00, 550-650 lbs 70.00-78.00, Medium and Large 2 305-450 lbs 60.00-80.00, 650-800 lbs 58.00-68.00; **BULLS:** Medium and Large 1 325-550 lbs 84.00-95.00, Medium and Large 2 400-785 lbs 63.00-80.00.

CALVES 210...**VEALERS:** Good 140-250 lbs 67.00-82.00, Standard and Good 90-105 lbs 50.00-65.00, 70-85 lbs 30.00-57.50, Utility 45-75 lbs 20.00-35.00.

FARM CALVES: Holstein bulls kill calves steady 20.00 to 25.00 lower...No 1 Holstein bulls 90-125 lbs 85.00-115.00 mostly 92.50-105.00, No 2 75-115 lbs 57.50-90.00; few No 1 Holstein heifers 90-120 lbs 320.00-375.00, No 2 60-105 lbs 90.00-190.00.

Beef type bulls and heifers 80-130 lbs 75.00-175.00, 140-295 lbs 82.50-114.00, one 132.00.

HOGS 27...**BARROWS AND GILTS:**

49-54% lean 4-H 48.00-53.00, 45-50% lean 235-280 lbs 44.00-46.00, lightweights 40-45% lean 105-180 lbs 48.00-59.00.

SOWS: US 1-3 390-450 lbs 39.00-42.00.

BOARS: one 615 lbs 15.00.

FEEDER PIGS 0...**NO MARKET TEST!**

SHEEP 273...Slaughter lambs steady. **SLAUGHTER LAMBS:** High Choice and Prime 105-135 lbs 73.00-74.00, Choice 45-50 lbs 108.00-122.00, 55-75 lbs 90.00-109.00, 80-100 lbs 80.00-94.00, Good and Choice 85-115 lbs 66.00-78.50.

FEEDER LAMBS: Good and Choice 55-75 lbs 74.00-88.00.

SLAUGHTER SHEEP: 30.00-47.00.

GOATS 120...(All sold by the head). Large Billies 98.00-114.00, Medium 39.00-58.00, Large Nannies and Wethers 58.00-75.00, Medium Nannies 33.00-48.00, Large Kids 29.00-46.00, Small 2.00-26.00.

Carlisle Livestock

Carlisle, Pa.

Report Supplied by Auction
Tuesday, Aug. 22, 2000

SLAUGHTER CATTLE: STEERS SELECT TO LOW CHOICE 61.75-65.50; **HEIFERS** LOW CHOICE 63.25-65.75; **COWS, ACTIVE! BREAKERS** 40.00-45.00, FEW 46.00-59.00, **BONERS** 38.00-44.00, **LEAN** 34.50-43.00, **LOW DRESSING DOWN** TO 31.00, **SHE3LLY** 30.00 **AND DOWN.**

BULLS: 1530 LBS. 47.25.

FEEDER CATTLE: STEERS 400-800 LBS. 81.00-90.00; **HEIFERS** 400-900 LBS. 63.00-85.00, **DAIRY TYPES** 45.00-66.00; **BULLS** 200-385 LBS. 95.00-110.00; **CALVES** RETURNING TO THE FARM, **HOLSTEIN BULLS** #1 85-125 LBS. 82.50-125.00; **HOLSTEIN**

HEIFERS #1 75-100 LBS. 160.00-240.00.

SWINE: HOGS US#1-3 210-280 LBS. 38.00-40.00; **BOARS** OVER 400 LBS. 16.50; **SOWS** US#1-3 350-550 LBS. 33.50-36.50; **FEEDER PIGS** BY THE LB. 30-40 LBS. 100.00-107.50, 65-80 LBS. 60.00-72.50, 100-120 LBS. 65.00, 150-200 LBS. 37.00-50.00.

GOATS: LARGE NANNIES AND BILLIES 47.50-96.00, **FANCY KIDS** 52.50-62.50, **FLESHY KIDS** 40.00-50.00, **SMALLHIN KIDS** 22.50-39.00.

LAMBS: CHOICE 35-60 LBS. 130.00-145.00, **GOOD AND CHOICE** 60-130 LBS. 71.00-95.00.

SHEEP: ALL WEIGHTS 28.00-60.00.

SALE EVERY TUES., 5 P.M. FOR RABBITS, POULTRY AND EGGS; 6:30 P.M. FOR LIVESTOCK, STARTING WITH CALVES. SPECIAL FED CATTLE SALES TUES., SEPT. 5; SPECIAL FEEDER CATTLE SALE TUES., SEPT. 5; PEN LOTS OF CATTLE SOLD IN ORDER RECEIVED; EARLYBIRD PENS CLOSE TUES., 2 P.M.

Lebanon Valley Livestock

Fredericksburg, Pa.

Report Supplied By USDA
Tuesday, August 22, 2000

TUESDAY CATTLE 102, **CALVES** 93, **HOGS** 71, **SHEEP** 0, **GOATS** 0. **LAST TUESDAY** 119, 102, 50, 0, 1.

CATTLE: Compared to the last week's auction, slaughter cows traded 1.00-3.00 higher. Other classes were not well tested.

HOLSTEIN STEERS: Few Choice 2-3 1365-1445 lbs 58.75-61.25.

SLAUGHTER HEIFERS: Few Select 1-3 Holsteins 51.00-51.25.

Valley Livestock

Athens, Pa.

Report Supplied by Auction
Monday, Aug. 21, 2000

HOLSTEIN HFR. CALVES 185.00-365.00.

BACK TO FARM CALVES 95-120 LBS. 125.00-141.00, 70-95 LBS. 75.00-130.00.

SLAUGHTER CALVES 10.00-59.00. **GRASSERS & STR. CFS.,** NONE.

FEEDERS 64.00-103.00.

LAMBS 76.00-110.00.

SHEEP 39.00-50.00.

HOGS 200-250 LBS. 35.00-55.00.

SOWS 30.00-31.00.

BOARS, NONE.

PIGS, EACH, NONE.

HEIFERS 46.00-54.00.

STEERS 44.00-51.00.

BULLS 45.00-50.50.

GOOD COWS 38.50-46.50.

MEDIUM COWS 33.00-39.00.

THIN COWS 20.50-34.50.

CATTLE MARKET STEADY TO A LITTLE STRONGER.

CALF MARKET STRONG AND ACTIVE.

HORSES AND PONIES, NONE.

GOATS 20.00-104.00.

BEST LAMB MARKET AROUND.

FEEDER SALE 1ST MON. OF EA.

MONTH; DAIRY SALE 3RD THURS. OF EACH MONTH.

Dewart Livestock

Dewart, Pa.

Report Supplied By Auction
Monday, Aug. 21, 2000

STEERS: TOO FEW TO QUOTE.

HEIFERS: 50.00-67.00.

GOOD COWS 30.00-44.25.

CANNERS AND CUTTERS 20.00-30.00.

BULLS, NONE.

VEAL 90-190 LBS. 75.00-340.00; 70-90 LBS. 30.00-75.00.

HOGS, 36.00-44.00.

SOWS 30.00-37.50.

FEEDER PIGS 10.00-43.00 PER HEAD.

WE GIVE IT OUR ALL SO THAT YOU CAN HAUL Used/Rental Liquid Manure Equipment

SPREADERS

- (2) Houle 6,300 Gal. w/28Lx26, Brakes, Lights, Etc. Both Are Rental Units..... **Call For More Info**
- New Idea Model 3222 with Lid, Excellent Shape, 16.5x16.5 Tires..... **\$10,950 Compare to New Price!**
- Balzer 3350 Vacuum..... **\$15,900**
- 3,000 Gal. Tank on Badger Running Gear, 21.5x16 1 Tires, Rear Pump, Great Shape!... **\$5,500**
- Better Built 3350 Gal..... **\$4,000**
- DeLaval 3,000 gal., Good Shape..... **CALL**

PUMPS

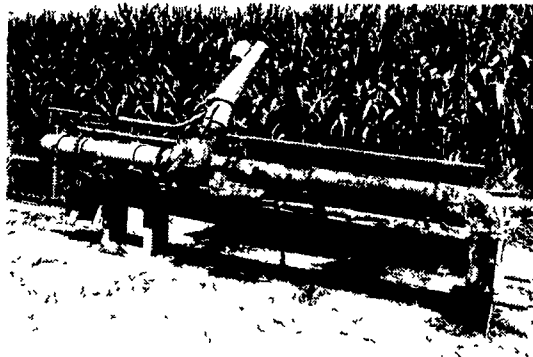
- (2) Houle Maxi Pumps, 28"..... **CALL**
- Houle Irrigation Pumps, on trailers, hyd. primers..... **CALL**
- Houle 32' and 42' Agri Pumps..... **\$7,500 to \$10,000**
- 1998 Houle 8/12' Super Pump, Rental Unit..... **\$6,950**

MISCELLANEOUS

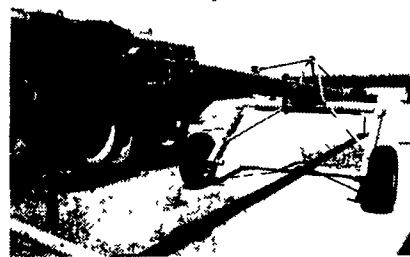
- Rubber Tire Scrapers, 3 pt. & Skid Steer; Also Push Blades
- CADMAN Hard Hose Reels 3250, 3250XL, 3750..... **CALL**
- Ever Rain Irrigation Reel, 4"x1300' Engine Drive..... **\$10,750**
- Long 1560 Irrigation Reel, 3-3/4" x 1200' Hose, Engine Drive, Manure or Water..... **\$7,175**

Check Our Website For Updated Equipment
www.MidAtlanticAgri.com

This Week's Special



(2) Houle Super Pumps for 8' Pits, Both in Good Condition with New Parts



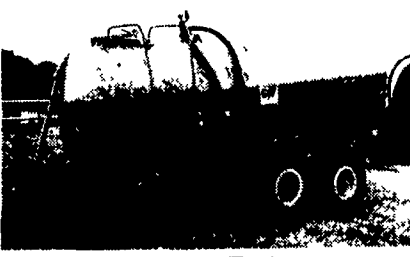
1997 Houle 42' Agitator, The Most Powerful Non-Female Agitator Made..... **\$5,500**



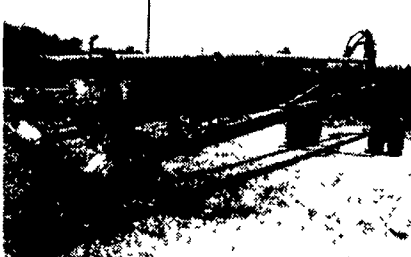
2000 Houle 3150 Gal., 23.1x26 Tires... **Available For Rent or Sale**



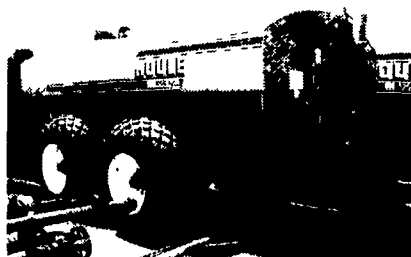
150 HP John Deere Engine with Houle Manure Irrigation Pump.. **Call for Rate & Availability**



3,000 Gal. Vacuum Tank, Concord Machinery, Too Many Options To List..... **\$5,500**



Houle 42' Lagoon Pump, Good Condition..... **\$6,250**



2000 Houle 3850 Gal., 23.1x26 Tires, Brakes & Lights, Rental.

Top Volume HOULE Dealer

In North America

4019 Ashville Rd.,
Quarryville, PA 17566

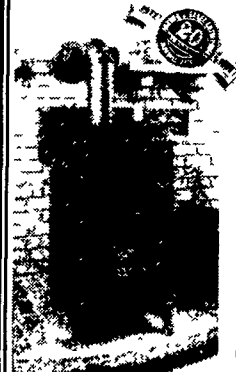
800-222-2948 • 717-529-2782

MID-ATLANTIC agri systems



WOOD/COAL BURNING STOVES

We have been proudly serving your needs for "22 Years"
Come visit our showroom.



- See our quality.
- Wood Stoves
- Coal Stoves
- Insert Models
- Cook Stoves

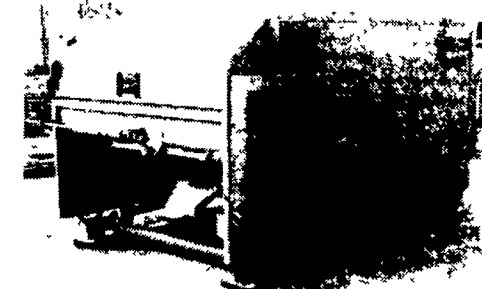
Dealer Inquiries Welcome

Made in York County, PA
(717) 432-9788

See Us About The New I.H. Rissler 2000 Series



GOOD USED MIXERS FOR SALE



- Oswalt 230 Trailer Mixer In Working Cond
- 150 Rissler Mixer (Good Condition)
- New 300 Oswalt Mixer
- 100' center charge Jamesway Feeder
- VanDale 3400 Manure Tanker (New)
- Starline Rollermill
- Starline Centrak 18 ft Ring Drive Unloader
- 24 Ft Big Jim Unloader
- Patz 24 Ft Ring Drive Unloader New in 1994 (In Good Condition)

All In Good Condition

★ STAR SILO ★

Myerstown, PA

800-431-7709