

Leesport Livestock Auction

Leesport, Pa.

Wednesday, Aug. 23, 2000

Report Supplied By PDA

CATTLE 188...(PDA)...(Supply included 76 steers and heifers, 84 cows, 6 bulls and 22 feeder cattle)...Compared with last week's sale...sl. steers uneven, 1.00 to 2.00 higher, Holsteins steady to .50 lower, cows mostly 1.00 to 3.00 higher, heifers steady to .50 higher, bulls mostly steady.

SLAUGHTER STEERS: Choice 2-3 1035-1460 lbs 65.25-69.25, return to farm 58.00-68.75, Select 1-3 58.50-64.00.

HOLSTEINS: couple High Choice and Prime 2-3 1385-1450 lbs 61.40 & 62.75, Choice 2-3 1245-1550 lbs 57.25-61.75, Select 1-2 55.00-60.50, Standard 1-2 51.75-56.25.

HEIFERS: Choice 2-4 1005-1270 lbs 63.25-65.50, Select 1-3 56.50-64.00, Standard 1-2 45.00-50.00.

COWS: Breakers 75-80% lean 42.00-46.25, Boners 80-85% lean 36.25-45.00, Lean 85-90% lean 28.00-41.75. Shells down to 20.00.

BULLOCKS: one Choice 2-3 65.00.

BULLS: Yield Grade 2 1190-1825 lbs 46.50-54.00.

FEEDER CATTLE: STEERS: one Large 2 270 lbs 100.00, couple Large 2 500 & 935 lbs Holsteins 56.00 & 65.00,

couple Medium 1 370 & 540 lbs 95.00 & 97.50, Medium and Large 2 615-860 lbs 58.00-69.00; HEIFERS: one Large 1 785 lbs 80.00, Medium 2 280-485 lbs 70.00-97.50, 585-740 lbs 52.00-70.00; BULLS: one Large 1 580 lbs 95.00, couple Medium and Large 1 350 & 355 lbs 90.00, 695-950 lbs 45.00-52.50.

CALVES 169...Vealers 10.00 to 20.00 higher.

VEALERS: couple Good 130 lbs 127.50 & 132.50, Standard and Good 75-110 lbs 40.00-75.00, couple 170 lbs 90.00 & 115.00, Utility 65-105 lbs 10.00-35.00.

FARM CALVES: Holstein bulls steady to 5.00 higher, Holstein heifers steady.

No 1 Holstein bulls 90-120 lbs 110.00-147.50, 80-85 lbs 65.00-82.50, No 2 90-120 lbs 70.00-132.50, 80-85 lbs 45.00-80.00; No 1 Holstein heifers 85-110 lbs 275.00-345.00, No 2 70-110 lbs 180.00-300.00.

Beef type bulls and heifers 90-130 lbs 105.00-200.00, one 175 lbs 80.00.

HOGS 29...Barrows and gilts 1.00 to 2.00 lower, sows 1.00 lower. **BARROWS AND GILTS:** 40-45% lean 235-285 lbs 37.25-38.50.

SOWS: one US 1-3 420 lbs 26.25.

BOARS: couple 660 & 755 lbs 13.50 & 14.00.

FEEDER PIGS 46...Few US 1-3 21 lbs 185.00, 35-55 lbs 70.00-90.00, couple 75

lbs 42.50. - per cwt.

SHEEP 32...Slaughter lambs uneven, lightweights 30.00 to 50.00 lower, midweights 15.00 to 20.00 higher.

SLAUGHTER LAMBS: Choice 45-50 lbs 110.00-133.00, 60-75 lbs 100.00-116.00, 85-135 lbs 74.00-84.00, couple Good and Choice 35 & 75 lbs 75.00 & 90.00.

SLAUGHTER SHEEP: 24.00-42.00.

GOATS 28...(All sold by the head). Medium Billies 25.00-39.00, Medium Nannies 30.00-51.50, Large Kids 19.00-36.00, Small 12.50-34.00.

St. Louis Feeder Cattle

Springfield, IL
Aug. 17, 2000

Report Supplied By USDA

Farmers Livestock Market Assn auction at Greenville, IL Wed Aug 23, 2000 Cattle and calves: 910 head. Compared to last week, slaughter steers and heifers were steady. Supply mainly Choice and Select and Choice slaughter steers and heifers. Moderate supply of holstein steers.

Total Receipts this week: 910 Last week: 880 Last year: 800 **SLAUGHTER STEERS:** Choice 2-4 1025-1525 lbs 64.00-66.00; few 900-950 lbs 60.00-62.00; Yield Grade 2-3 and Fancy 2-4 1100-1475 lbs 66.00-68.00; Prime 2-4 1200-

1450 lbs 68.00-69.00. Select and Choice 2-3 1000-1375 lbs 63.00-65.00. Select 2-3 1000-1350 lbs 60.00-63.00.

HOLSTEIN STEERS: Choice 2-3 1300-1725 lbs 60.00-63.00; Select and Choice 2-3 1275-1600 lbs 58.00-60.00. Select 2-3 1100-1500 lbs 55.00-58.00; Low Yielding 50.00-55.00.

SLAUGHTER HEIFERS: Choice 2-4 975-1350 lbs 64.00-66.00; YG 2-3 and Fancy 2-4 1100-1325 lbs 66.00-68.00; Prime 2-4 1025-1350 lbs 68.00-69.00. Select and Choice 2-3 950-1350 lbs 63.00-65.00. Select 2-3 925-1275 lbs 60.00-63.00.

HEIFERETTES: Medium and Large Frame 1075-1350 lbs 45.00-55.00.

FEEDER CATTLE: Compared with last week, feeder steers and heifers under 500 lbs were fully 5.00-10.00 higher. Over 500 lbs were steady. Overall quality above last weeks level with several lots of thin 200-500 lb blacks. Large buyer attendance.

FEEDER STEERS: Medium and Large Frame 1: Thin 200-300 lbs 115.00-130.00, fancy 130.00-140.00 300-400 lbs 110.00-125.00, fancy 125.00-128.00 400-500 lbs 100.00-115.00, fancy 115.00-121.00 500-600 lbs 93.00-101.00 600-700 lbs 86.00- 94.00 Moderately Fleishy: 300-600 lbs 83.00-92.00 Few 900-1100 lbs 61.00- 64.00 Large Frame 2 Holsteins-

200-300 lbs 95.00-110.00 300-400 lbs 85.00-95.00 Pkg preconditioned 345 lbs at 120.00 400-500 lbs 81.00-86.00 500-600 lbs 74.00-82.00 **FEEDER HEIFERS:** Medium and Large Frame 1: Thin: 200-300 lbs 100.00-115.00, fancy 115.00-120.00 300-400 lbs 95.00-105.00, fancy 105.00-110.00 400-500 lbs 86.00-96.00 500-600 lbs 80.00-88.00 600-700 lbs 78.00-84.00 Moderately Fleishy: 300-500 lbs 80.00-90.00

Cow/Calf Pairs: Medium to Large Frame 3-10 yrs old with calf at side 525.00-640.00/pair.

Bred Heifers: Large Frame 1-2 yrs old in 1st adn 2nd stage 520.00-570.00/hd **Bred Cows:** Large Frame 8-10 yrs old in 2nd and 3rd stage 480.00-575.00/hd.

Slaughter Cows and Bulls: 160 head. Compared to last week, slaughter cows mostly 1.00 lower. Bulls were steady.

SLAUGHTER COWS: % Lean Weight Price Breakers 75-80 % 850-1200 lbs 37.00-40.00 Boners 85-90 % 850-1200 lbs 39.00-42.00 High Yielding 85-90 % over 1100 lbs 40.00-42.00 Lean 85-90 % 850-1200 lbs 35.00-38.00 90-95 % 750-850 lbs 32.00-35.00 90-95 % under 750 lbs 28.00-32.00

BULLS: Yield Grade 1-2 1200-1850 lbs 46.00-51.00, Low Yielding 44.00-46.00; Individual Yield Gr 2 2155 lbs at 40.00. Yield Grade 1 1600-1975 lbs 51.00-52.00, few gaunt up to 52.50.

TALK TO US BEFORE YOU BUY



- Forages • Grain
- Complete Feeds

WE HAVE PROGRAMS THAT WILL WORK FOR YOU!



Check Out Our ROUGHAGE EXTENDER And COMPLETE FEED

We Can Lock Your Price In For 3, 6, or 9 Month Give Us A Call:

HESS MILLS



6 S Vintage Rd., Paradise, PA 17562
(717) 442-4183 800-635-3592

McElwee's Livestock

Home of Shippensburg Cownet
3 Locations To Serve You

Newburg

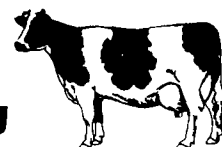
Mon. 9-4, Thurs. 9-2
(717) 423-6869

Woodsboro, MD

Tues. 10-2
(301) 845-6232

Chambersburg

Wed. 9-3
(717) 267-3321



Receiving All Cows, Bulls, Steers, Calves
Call For Daily Price Quotes

PREVENT A HEART ATTACK

Take An Artery Cleaner Capsule with each meal.

(Formally called Longer Life)

Why take a chance with the #1 killer in the USA? The best safe guard is to keep your arteries clean. NO SIDE EFFECTS with this ALL NATURAL product. We make no medical claims. But people who maintain a clean cardiovascular system enjoy better health and save money. An ounce of prevention costs less than a pound of cure. The regular price is \$21.75 a bottle plus shipping. Get the Artery Cleaner at the special discount rate shown below.

Special Discount If you buy an average of only 2 bottles a month, the cost for Artery Cleaner is as follows:

Item	Each	Special	Ship	Credits
2 bottles each month	17.48	\$34.95	4.00	6.00
4 bottles every 2 month	15.99	63.95	4.00	8.00
6 bottles every 3 month	14.99	89.95	4.00	10.00
12 bottles every 6 month	13.33	160.00	5.00	12.00

Referral Plan Inquire on how to receive credits toward getting your Artery Cleaner free of charge every month.

Dealers Wanted For more information, or to order products contact: U.N.I. HEALTH PRODUCTS, INC.
539 Hilltop Road, Myerstown, PA 17067

Order with a check, or with a Visa, MasterCard or Discover card, by calling 717-866-4555 or 1-800-668-7373, only during office hours from 8AM to 5PM Monday thru Friday.