

Public Auction Register

Closing Date Monday 5:00 P.M.

of each week's publication

Internet Sale Register will be updated

every Sat. at 2:23 P.M.

ATTENTION Auctioneers

All sales register info needs complete address, street, town, county & state.

SAT SEPT 16 9AM 20+/- acre farm farm equipment household goods & antiques Located at 499 Yellow Hill Rd Brecknock Twp Lanc Co OH Saturday Aug 19th & 26th from 1-3 PM Terms by The Estate of Mary Ann Styer Horning Farm Agency Inc 610-286-5183

SAT SEPT 16 9AM 111 acres of farmland farm equip butcher equip Corner of Blacksbridge Rd and Groff Rd Annville E Hanover Twp Leb Co Pa By Alice Gerberich Nelson Eber sole auct AU 001307 L

SAT SEPT 16 - 9AM Real estate antiques dutch cupboard furniture HH goods, old quilts tools 821 N Lime St Lanc Pa For Grace E Hartman Miller & Siegrist aucts AU 1723L

SAT SEPT 16 9AM Real estate antiques & collectibles household goods guns & out door items farm equip tools farm tractor At 175 Konick Rd 1 mile E of Matamoras Halifax RD Pa Mrs Irene Konick owner David Deiberl Ed Shoop auct AU001213-L AU000842 L

SAT SEPT 16 -9AM Located on Sheep Hill Rd 1 mkle E of Schaefferstown Leb Co Pa 3 acre RE antiques HH goods woodworking tools Owner Willard Eberly Martins Auct Service 1078-L

SAT SEPT 16 9AM Real estate household goods antiques 1959 Sunbeam Alpine Roadster at 25 Queen Rd Intercourse turn off Rt 772 at Best Western turn S on Queen Rd to sale Leacock Twp Lanc Co Pa By Miles J & Rosemarie Haus Robert E Jeffrey R & Michael L Martin aucts AU0-00580L

SAT SEPT 16 9AM Three acre real estate, three bedroom dwelling antiques household goods woodworking tools From the square of Schaefferstown take Market St S one block turn left onto Sheep Hill Rd one mile to sale on right By Willard Eberly Martins Auction Service AU1078L

SAT SEPT 16 - 10AM Real Estate farm machinery silo and milking equip Al Ty Stables From Halitax, take Rt 225 N 7 1/2 miles to Mountain House Rd turn right, go 2 1/4 mi to Straws Church Rd, turn right 1st farm on left Dee & Dennis Miller owners Klind s Auctions Inc #00500

PUBLIC AUCTION

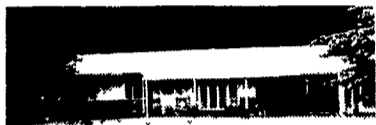
SAT., AUGUST 26, 2000 At 8:30 AM

Located at 1204 Pottsville Street, Lykens, Wiconisco Township, Dauphin County, Pa

Directions 5 miles North of Elizabethville, or 1 Mile South of Lykens, Off Route 209 Turn North At Big Run Onto the Coaldale Road, Watch for Signs Day Of Sale.

REAL ESTATE AT 11:00 AM

Well-Built 3-Bedroom Ranch Home With Attached Carport

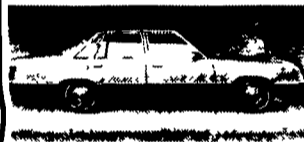


• Kitchen w/Dining Area • Living Room • Full Bath with Laundry Chute • 3 Bedrooms • Master Bedroom Has 3 Closets & 1/2 Bath • Full Basement with a Finished Family Room with Woodstove • Plenty of Built-In Shelves For Storage • 200 Amp Service • Electric Heat • Outside Basement Entrance • Drilled Well • Private Septic • Lot Size Approx 100'x155' (+/-) • Many Other Extras including 12'x 8' Storage Shed: 18'x4' Above Ground Pool with Deck, Covered Patio, & Paved Driveway. **READY TO MOVE INTO.**

FOR INSPECTION OF THIS WELL-MAINTAINED PROPERTY, PHONE (717) 453-9447. Inspect Now, After Inspection, Arrange Your Financing And Be Prepared To Bid & Buy At The Auction.

TERMS: 10% Down The Day of Sale and Balance Within 45 Days. Further Terms and Conditions To Be Announced When Real Estate Is Offered at 11:00 AM.

1984 FORD LTD 43,200
Original Miles, Excellent Condition
AGWAY 12.5 HP RIDING MOWER
w/42" CUT (APPROX. 2 YRS. OLD)



ANTIQUES AND COLLECTIBLES

Oak Kitchen Cupboard; Small Hanging Corner Cupboard, Humpback Trunk; Heywood Wakefield Office Chair; Stepback Cupboard Top; Single Treadle Sewing Machine, Child's Dropleaf Table with 2 Chairs, Washstand (Painted), School Desks; Wooden Bench, Child's Slat Back Rocker; Small 1-Door Cupboard; (2) Child's Windsor Style Arm Chairs; Depression Era Dresser (Painted), The Keely Stove Co. Small Parlor Stove; (2) Flow Blue Cup & Saucers; (2) Planter's Peanut Jars (1 Damaged), 1933 Chicago World's Fair Glass with Picture of Pres. Roosevelt and Mayor Cermak; Dietz Monarch Lanterns, Rug Beater; Iron Trivet, Cast Iron Waffle Iron; Cast Iron Frying Pans, Cast Iron Griddles; Open Pit Hot Dog Roaster; Cooper's Bakery Bread Box, Sterling Vase and Salt & Pepper Shakers; Romberger's Dairy Milk Box, Kerosene Lights; Sprinkling Can; Lykens Bottling Works Soda Bottle, Popcorn Popper; Ice Cream Dipper; Washboard; Guy Dropller Carbide Light, Miner's Torch Lamp; Milk Can, Buttons; (2) Salt Glazed Covered Butter Crocks, Romberger's Dairy Advertisement Thermometer; Grape Pattern Carnival Bowl, Moon & Star Candy Dish; Chicken on the Nest, Opalescent Laced Edge Candy Dish, Milk Glass; Pressed Glassware; English Village Dishes, Homer Laughlin Georgian Pattern Dishes, Misc Pieces of Depression Glass, Soda Bottles, Dishes; Dresser Scarves and Fancy Work, (2) Small Porcelain Dolls, Barbie Dolls; Clothes & (2) Cases, Coca-Cola Waste Can, Souvenir Milk Glass Hatchet, Food Chopper; Victorian Photo Album, Yuengling Beef Tray; Grape Pattern Stoneware Pitcher; Star & Enterprise Flat Irons, Floor Lights; Crocks, Slaw Cutter; And Other Items.

HOUSEHOLD & MISCELLANEOUS ITEMS

4 Pc. Basset Mahogany Bedroom Suite; 3-Pc. Living Room Suite; Cherry Finish China Hutch; Dining Room Table with 2 Boards & 4 Chairs; Slant Front Desk, (2) Single Beds with Box Springs & Mattresses, Sealy Full Size Box Spring & Mattress, 27" RCA Color Track Color TV; Kitchen Breakfast Bar, Bookcases; Dresser with Mirror; Mahogany End Tables; Gone With The Wind Style Lamp; Table Lamps; Kenmore Microwave Oven; G.E. Automatic Washer, Kenmore Dryer; Edison Dehumidifier; Quasar AM/FM Stereo; Regency Programmable Scanner; Necchi-Elna Electric Sewing Machine; Material & Sewing Items; Patto Glider; Sony Radio; Craig 13" Color TV with Remote, Oscillating Floor Fan; Homart Cooler Window Fan; Cherub Dresser Lamps; 8-Track Tape Player, 45 RPM Records; Blankets & Bedding, Christmas Decorations; Canner, Canning Jars, Lawn Chairs; Rubber Tire Wheelbarrow; Rockwell Circular Saw; Craftsman 3/8" Drill, B&D 1/2" Drill; String Trimmer; Garden Hose; Extension Cords; Hand Tools, and Other Items

TERMS: Cash or Approved Check with Picture ID.

AUCTIONEER:
SCOTT A. KLOUSER,
AU-003159L

ESTATE OF:
MARGARET I. MAURER
EXECUTOR: ALAN J. MAURER
GREGORY KERWIN, ESQ.
• KERWIN & KERWIN

- FOOD STAND AVAILABLE -

Scott A. Klouser Auction Service
179 Wolfe Road, Elizabethville, PA 17023
(717) 362-9688



PUBLIC AUCTION

of
20 Acre +/- Farm
Farm Equipment, Household Goods & Antiques
Sat., September 16, 2000
at 9:00 AM

Real Estate to be sold at 12:00 Noon
Directions From Bowmansville take Rt 625 north to left on Oaklyn Dr for approx 1/2 mile to right on Yellow Hill Rd for approx 1 3/4 mile to property on the left From Churchtown take Hammertown Rd for 1 8 mile to left on Edwards Rd for 2 7 mile to left on Yellow Hill Rd for 1 3 mile to property on the right 499 Yellow Hill Rd Brecknock Twp Lancaster Co

Real Estate consists of:
1 1/2 Story House Shingle Roof Vinyl Siding Full basement 1st Floor has kitchen dining room living room bath and toyer 2nd Floor has two bedrooms O/HA heat on site well & septic graced by large evergreen trees
Frame Barn: 31 x27 2 Story Detached Garage: 32 x28 2 Car w/Storage Space Land: 20+/- half tillable and half wooded
TERMS: 10% down day of sale; settlement within 60 days.
OPEN HOUSE: Saturday, August 19th & 26th from 1-3 PM

Terms by: **Estate of Mary Ann Styer**
Attorney Linda Kling
Executors: Doris Ann Weber,
Charles R. Styler Jr., Clayton W. Styer

HFA HORNING FARM AGENCY, INC.
REALTORS • AUCTIONEERS • APPRAISERS
Merle Eberly AU-2417-L • Alvin Horning AU-0433-L
Elton Horning AU-0434-L
Route 23 Morgantown, PA 19543 (610) 286-5183

Double D Round Up PUBLIC AUCTION

OF COWBOY AND WESTERN MEMORABILIA
Sat., October 7, 2000
10:00 am

Miller's Auction Center
Bethel, PA in Berks County
(Exit #3 from I-78, halfway between Allentown and Harrisburg)

We are looking for consignments of: Antique, vintage, and contemporary items. Horse drawn carriages, wagons, tack, etc. Horses and Longhorn cattle.

For your items to be listed or advertised, they must be consigned by August 31, 2000.

Join us on Friday October 6, 2000
(at Millers's) beginning at 12 Noon for:

- Tips on horse training in a round pen • Horse drawn wagon rides • Chuck Wagon Chili
- Campfires • Liar Contest • Horseshoe Teams
- Door Prizes

Vendors welcome - call to reserve space.

Auctioneer:
Dwight D. Miller AU002414-L
Bethel, PA 19507
(717) 933-5736
Dave Ebersole AU0246-L
(717) 876-1041



CONDUCTED BY ANOTHER GOOD AUCTION

DINGMAN & JAMES AUCTION CO.

PUBLIC AUCTION
Tues., Aug. 29, 2000
at 10:00 AM

Lawrence Township, Princeton Borough,
Princeton Township, West Windsor
Plainsboro Board of Education
At The Lawrence Township
Public Works Facility
240 Bakers Basin Road
Lawrenceville, New Jersey 08648
Preview: 9:00 AM Day of Sale

Items for Lawrence Township include:
Vehicles: (2) Chevrolet Pick-Ups 4x4, Kubota Mower 5HP Model W5019, Toro Walk-Behind Mower, Whittleford K65A Spreader, Excel Plow Model 920173, Fresia Variable Angle Plow Model TB, Set of Forks for John Deere 410 Loader, Starcraft 12 Ft. Aluminum Jon Boat, (5) Federal Signal Light Bar Assy. (2) Whelen 90H Light Bar Assy., Target Tech Light Bar Assy., Signal Stat Dual Com. Light Bar Assy., (3) Federal Signal Twin Sonic Light Bar Assy., (2) Weather Guard Side Mount Pickup Tool Boxes, (6) Boxes Turf Grip Gutter Broom for FMC Sweeper, Zep Dyna Clean Parts Washer & Degreaser, Satina Gillotine Window Police Car Divider, Various Parts for Ford Crown Victoria, (3) Fax Machines, (2) Printers, (5) Copiers, (25) Computers & Monitors, Desk & Chairs, Misc. Equipment, (33) Bicycles.

Items for Princeton Township: 1978 International Dump truck, (2) Kelly Crustwell Gun paint machines, 9' Swenson box sander w/calcium tank, (2) Spinners for tailgate sander, Snow Plow Push Frame, 8' Mini Dump Salt Spreader, Spray Trailer, Blitzer Lawn Mower, Tag Axle, (2) Tires w/rims and drums for tag axle 825x20, Tire Machine, Sifting Machine, Electric Hack Saw, 2 Water Coolers, (8) Air Conditioners, (20) Catch Basin Grates, Police Riot Helmets, Shields, Office & Comp. Equip. (79) Bicycles.

Items for West Windsor/Plainsboro Board of Education: (6) 1987 International School Buses.

Items for Princeton Borough: Vehicles: 1984 Ford Pickup, 1987 Chevrolet Cavalier, 1988 Chevrolet Pickup, 1979 White Garbage Truck, (2) 7' Myers Snow Plows, Truck Cap for Dodge, Bear, Atlas Bear Gas Analyzer, Snap-On Digital Oscilloscope w/Printer Spin Wheel Balancer, (5) Cell phones, (2) Bike Helmets, (2) Pagers, Misc. Computers And Accessories, (5) Watches

Terms: As-Is, Where-Is. Payment in full day of sale by cash or certified check only payable to Dingman & James. Immediate Removal.

Auctioneer's Note: Auctioneers have obtained the information and descriptions from what they feel are reliable sources. Prospective buyers are advised that auctioneers do not guarantee the accuracy of descriptions or conditions of the subject property. Items may be added or deleted from the sale if it is in the best interest of the Township.

THE COLONEL'S HOTLINE: 609-443-3555

Consignment Auction
AUGUST 26, 2000
10:00 AM

Auction is located 1 1/4 mile north of Ashville along Rt. 36 in Cambria County
*******Partial Listing Only*******

New Items Consigned Daily
TOOLS, WELDERS, AND SHOP EQUIPMENT

Special Note: Welding and Auto Repair Shop going out of business.

200 amp DC Lincoln gasoline welder with 100 ft. Leads, AC 225 amp welder, Hobart gasoline, 200 amp welder on trailer, needs minor repairs, pipe vice, snap-on wrenches, sockets, impact wrench, hydraulic jacks, jack stands, torch set-hose and gauges, tap and die set, chain hoist, complete set of state inspection tools, come along's, trouble lights, drill bits, shovels, step ladder, 40ft. extension ladder, craftsman surveyors level, car ramps, Black & Decker bench grinder, 2 ton floor jack, 14" Dewalt cut off saw, rolls of mig wire, welding rods, extension cords, air tools, bolts, bag cart, 4 wheeled carts, wheelbarrow, paint sprayers, complete set of NAPA fan belts, metal cabinet full of new auto parts including; head lights, filters, shocks, plug wires, wiper blades, PVC valves, bearings, brake shoes, 50ft. recoil air hose, 1 ton chain hoist with trolley, 55 gallon drum pump, 220 volt air compressor, 1/4 hp craftsman paint compressor, kerosene heater, CB radio and antenna, fire extinguishes, 4X8 steel work table, tool bin, 8 tier lazy susan bolt bin, peg board, brush guard for Ford, 220 volt 8 ft. Electric base board heater, IBM electric typewriter, office desk and chair, folding chairs, old wooden Barkers Linament box.

TRUCK LOAD OF NEW TOOLS AND MISC. ITEMS

Shovels, air hoses, grinders, socket sets, rakes, picks, digging bars etc. 3 ft. stone trailing machine, farm gates. Many more items, too numerous to mention.

TRACTORS AND AUTOMOBILES

14 hp Economy King Garden Tractor with 12" plow and trail disc, 10 hp Craftsman riding mower, 10 hp Cub Cadet, front end loader for Farmall H or M, 2 Farmall H's, 2 Farmall M's, (one with front end loader), 1989 Chevy Astro Van, 1976 4X4 Jeep Pick-up with steel bed, 1981 GMC 121/2 foot flat bed, ex. condition. 1980 3/4 4X4 Chevy (low miles), 1970 Chrysler Newport (40,000 miles).

FARM EQUIPMENT

New Holland 8 ton forage wagon, two 5 ton wagon chassis, IH 350 one row harvester, Badger silage blower, John Deere 4 bottom 14" drag plow, John Deere 12' drag harrow, Two row corn planter, MF grain drill, IH 4 row 3pt. hitch cultivator, 16 ft. grain elevator.

To consign items and for more information please call (814) 886-5542

Terms: Cash or check with ID
Auctioneers: David A. Stoy AU-003872-L
Rick Weikel AU-003867-L
Auctioneer and Owner not responsible for accidents
Breakfast and Lunch Available