

### Public Auction Register

Closing Date Monday 5:00 P.M.

of each week's publication

Internet Sale Register will be updated every Sat. at 2:23 P.M.

#### ATTENTION Auctioneers

All sales register info needs complete address, street, town, county & state.

WED AUG 30 10AM Estate auction held on site at 845 Quarry Rd Jersey Shore Pa Estate of the late Edwin G Snyder Antiques collectibles Lionel train baby grand piano guitar library furniture Bob Chuck & Rich Roan Inc aucts AU 000777 L

WED AUG 30 10AM Singer harness treadle sewing machines power & hand tools hardware guns pistols bow gun cabinet hunting clothing knives At 50 W Roseville Rd Manheim Twp Lanc Co Pa By Mary D DeMascolo Howard E Shaub Inc auct AU-000831-L

WED AUG 30 - 1PM 19 3/4 Acre +/- Snyder Co Farmette near Troxville Pa Kenneth Hasinger Neil A Courtney aucts AU-001532 L AU 002651 L

WED AUG 30 2PM Antiques household goods collectibles & tools Held at Horst Auction Center Rt 322 & Durlach Rd Ephra

ta Lanc Co Pa Horst Aucts AU438L  
WED AUG 30 - 3PM Antiques HH goods furniture AT 1242

THURS AUG 31 King's Evening Dairy Sale, Landisburg, Pa Fresh & Springing heifers & cows, plus several groups of open & bred heifers  
THURS AUG 31 10AM farm & construction equipment Newark Valley, NY Goodrich Auction Service  
THURS AUG 31 - 3PM Antique furniture, household goods, antique country store articles, car, pickup truck, 20 HP lawn tractor, lawn & garden equip & tools for the William H Theophil Estate of Gatchellville & Laura A Smith estate, York Pa Held in the Winterstown Fire Co Hall midway between Red Lion & Stewartstown along Pa Rt 24 in Winterstown Boro Secrist Aucts #820

THURS AUG 31 - 6PM Real estate 2 unit investment property 28 & 30 E Lemon St, Lancaster For Isabel Stauffer Estate Conestoga Auction Co AH-11 L  
THURS AUG 31 - 7PM Decatur Twp Mifflin Co Real Estate Kenneth E Hassinger, AU-001532-L, Neil A Courtney AU-002651-L  
THURS AUG 31 - 7PM King's Dairy Sale, in Perry Co 15 miles N of Carlisle on Rt 74, Landisburg Pa Kings Auctions Inc

#### SEPTEMBER

FRI SEPT 1 9AM Fall machinery sale Belleville Livestock market Belleville Pa  
FRI SEPT 1 - 9 30AM House hold and shop equip N of inter

state 80 on Hubler Ridge Rd or approx 1 mile off Rt 64 on Hubler Ridge Rd Adam and Nancy Byler owners Elam Stoltzfus AU-003762-L, aucts  
FRI SEPT 2 1 PM & SAT SEPT 2 - 8 30AM Books, etc from the collections of the estate of Wilber E Hoover & John E Retallack At Horst Auction Center 50 Durlach Rd, Ephrata Lanc Co, Pa AU438L  
SAT SEPT 2 - 8AM 15th Annual Consignment sale Williams Grove Historical Steam Engine Assoc, Inc At Williams Grove Hist Steam Eng Assoc 10 miles S of Harrisburg off Rt 15 or 74 Ike Eichelberger AU-1954-L Ralph Brennehan #708L Lisa Romberger #AU003702-L Jesse Romberger #AU3719-L Terry Shertron AU003732-L

### PUBLIC AUCTION

on premises 2 miles N of Dewart, Pa. along Rt. 405 near Snyders Equipment THURS. EVE AUG 24

Starting 4:00 PM

MODERN HOUSEHOLD GOODS Brief listing such as 4 pc cannonball BR suite Cherry Grandlathers clock modern roll top desk uph furniture washer dryer refrig stove, freezer microwave air conditioner TV plus lots more 8 pool table quantity of old items like shoe shine stand chairs & rockers tall stool, Glassware & smalls

84 Chevvy S-1-0 Durango 4x4 Super Cab pickup - 61 000 miles  
HUNTING & FISHING Rem 760 270 Rem 760 35 Rem 572 22 Glenfield 75 22 Win 67 22 Higgins 12 ga Ithaca 37 12 ga H&R 16 ga TC 50 cal muzzleloader 10 hole glass door gun case ammo fishing poles creel lures tackle boxes etc

LAWN & GARDEN ITEMS, TOOLS, JD 210 lawn tractor w/family sells separate JD sweeper cart 4 disc & harrow Precision planter lime seeder roller weedwacker chainsaws Alaskan wood stove skisaw ladders table saw grinder wheelbarrow other hand & garden tools

REAL ESTATE @ 7PM sells Absolute 1 acre lot w/Ranch 5 room 3 bedroom home 2 car garage other garage a must see property for terms on RE call Auctioneers 6% buyers premium applied FOR FULL LISTING CALL AUCTIONEERS

Owners: ELMER & BEATRICE DEWALT

Conducted by Lunch Tent  
1515 Kepner Hill Road, Muncy, PA 17756  
PA Lic. #RY 71L  
(570) 546-6907

### "Horst Auction Center" PUBLIC SALE ANTIQUES, HOUSEHOLD GOODS, COLLECTIBLES & TOOLS WED., AUG. 23, 2000 2:00 PM

Sale to be held at the Horst Auction Center, located at the corner of Rt. 322 & Durlach Rd. (approx. 2 1/2 miles west of Ephrata), Ephrata, Lancaster County, PA.

FURNITURE - Wood Chest; 6 Leg Dropleaf Table; Pine Blanket Chest; Empire/Sheraton Chest Of Drawers, Empire Bureau; Walnut Cradle; Cannonball Rope Bed; Decorated Arm Rocker; Marble Top Victorian Table; MERRICK'S 6 DRAWER SPOOL CABINET; Stools; Dough Tray; Walnut Upright Piano; Piano Stool; Dome Top Trunk; OAK - Sq. Extension Table; Dresser w/Mirror & Washstand; Jelly Cupboard; Potty, Pressed Back Rocker; Cane Seat Rocker; Child's Roll Top Desk & Chair; Plant Stand; Cottage Dressers; Wicker Child's Rocker; Depression Cedar Chests; Smoking Stand; Brass & Tile Stand; Barbershop Back Cabinets; 10 Pc. Depression Dining Room Suite; Gateleg Table; Magazine Table; MODERN CHERRY - Corner Cupboard; Tapered Leg Table; 9 Pc. Rock Maple Dining Room Suite; Modern Settee & Matching Plank Bottom Chairs; MAPLE - 3 Pc Bedroom Suite; Chest Of Drawers, Dresser, Single Bed; Open Corner Cupboard; Bookcase; 2 Pc. Modern Walnut Bedroom Set; Trestle Desk & Chair; Coffee & End Tables; 3 Pc Living Room Suite; La-Z-Boy Recliner, Sofa; Box Springs & Mattresses, Roll Away Bed, Church Bench; Utility Cabinet; Wardrobes; Crib; Folding Chairs; Card Table;

APPLIANCES - Microwave; Color Console T.V., Sewing Machine; Paper Shredder, Fans, Sm. Kitchen Appliances. Kitchen Utensils; Kettles & Cookware; Canners; Tupperware; Waffle Iron, Slat Boards; Meat Cleavers; Keen Kutter Food Grinder; Table & Floor Lamps; OAK CALENDAR MANTEL CLOCK; Cuckoo Clocks, Hamilton Carriage Clock; Bone & Wood Handled Flatware; Butcher Ladles, Spatula & Fork, Lollipop Butterprints (Ira Gockley); Pie Paddles; Brass Bucket, Cow Bell; Iron doorstops; Cigar Cutter, Mortar & Pestle; Yardsticks; Canes; CHINA & GLASSWARE - Late Adams Rose Plate; Ironstone Pitcher & Bowl; Lustre Pitcher; Blue Willow Bowls; Puritan Pitcher; "Friendly Village" China; Tea Set; Stoneware Crocks & Jugs; Sponge Decorated Spittoon; Jardimieres; China Creamers; Salt & Pepper Shakers; Bird Figurines; Hulls Teapot & Pitcher; Beer Steins; Lady Head Planter; Cookie Jar; Pink Depression Glassware; Dk. Carnival Glass Bowl; Pressed & Pattern Glassware, Hens On Nests; Peanut Butter Glasses; Milk Bottles; Min. Lamps; Canning Jars.

LINENS - Quilts; Quilt Patterns; Lap Robe; Comforters; Doilies & Fancywork, Blankets; Bedspread, Vintage Clothing; Feather Pillows; Rag Carpet, Costume Jewelry; Jewelry Boxes; Baskets, Records, Books; Prints & Frames; Mirrors, Toys & Games, Doll Cradle & Crib; Ford Tractor; HO Train Sets

TOOLS - TROY BILT "HORSE" ROTO TILLER, SIMPLICITY HYDRO 14 GARDEN TRACTOR, Weed Trimmer, Hedge Trimmer, Push Mower, Garden Tools; Kerosene Heater; Stepladders, Hatchets & Hammers; Sprinkling Can, Wooden Crate, Milk Can; Wooden Measure, Work Bench, STANLEY STEEL PLANES; Hand Saws, Chisels, Squares, Wilton Vise; Hand Tools; Antique Locks & Many Other Items to Be Sold!

No Out Of State Checks Without Prior Approval  
SALE FOR:  
SUSAN YOST ESTATE  
VIOLA HALDEMAN  
EDNA SAUDER AND OTHERS

**HORST AUCTS.**  
T. Glenn Timothy G. Thomas A.  
AU438L (717) 738-3080 Fax # (717) 738-2132 "VOICES OF EXPERIENCE"

### TOY SHOW

Leesport Farmers Market Social Hall Rte. 61 Leesport, PA Sunday, Sept. 3, 2000 - 9:00 am to 2 pm  
**FREE ADMISSION**  
Flea Market Open  
All Categories of old toys and collector toys. 150 tables of toys indoors.  
Contact Gallagher Productions  
**(610) 562-9404**

### HUGE THURSDAY AUCTION!

ANTIQUES, FURNITURE, APPLIANCES, COLLECTIBLES, HOUSEWARES, TOOLS, ETC.

From the home of Beatrice L. Keener, late of Windsor, PA; the Estate of Mrs. Louise Scott of Fawn Grove, PA; and from a fine home in Washington, DC. The hall will be full!

**THURS., AUG. 24, 2000 3:00 P.M.**

To be held within Winterstown Fire Hall, Winterstown, York County, PA. Rt. 24 southeast from Red Lion approx. 4 mi to hall on right. From Maryland and south, MD Rt. 23 N. onto PA Rt. 24 through Stewartstown and go approx. 4 mi. to hall on left.

ANTIQUES, FURNITURE, APPLIANCES, HUMMELS, COLLECTIBLES, HOUSEWARES, ETC.

PA House cherry gateleg table w/6 cherry needle-point chairs & breakfast china, two cherry BR suites; gent's & lady's chair w/m.o.p. inlay, lg. hutch; matching petite corner cupboard, 2 servers; buffet, cherry dresser & chest of drawers, French curio cab; 7 pc. maple dinette; blonde mahog. bed & dresser; Ridgeway cherry GF clock w/new works, 6 recliners; waterfall cedar chest & chest of drawers, decor. Ethan Allen chest of drawers; sofa bed & matching loveseat; Baldwin 2-man. elec. organ; 2 seven-drawer lingerie chests, oak clothes tree, K rockers, Kirby & Dirt Devil vacuums; card table w/4 padded chairs, ant painted oak dinette set; leather inlay and other lamp tables; lamps; apt size Coldspot freezer; and much more furniture, 3 sets of sterling flatware - Steiff, Reed & Barton and Towle, 30+ Hummel figurines; Doulton & many other figurines, Beswick English horse; coll of hand-decor china eggs, German salt glaze redware pitcher, crystal, ornate silver candelabra; green Northwood cherty pattern C&S w/gold overlay, HP Bavaria pcs, carved African cresche figures, Maxfield Parrish print, Royal Copenhagen plates, "Pet" miniature case iron cookstove w/tea kettle & other accessories, 12 metal airplane banks - Exxon, Amoco, Amelia Earhart, etc. fine framed pen & ink rendering of U.S. Capitol; lg. glass cakestand w/cover; kero. lamps, stainless flatware; many knick-knacks; many box lots Box lots to start the auction at 3:00 P.M., Sterling, Hummels, fine figurines, etc. at 6:00, furniture at 7:00 P.M

GUNS, POWER EQUIPMENT, TOOLS, ETC.

5 hp Central Tractor wood splitter, Homelite Super XL-20 chainsaw; Milwaukee 7-1/2" Sawzall w/worm drive; Rockwell Delta jointer, Craftsman radial arm saw; Craftsman miter saw outfit; Manley floor jack - need o-ring kit; elec. leaf blower; cat ramps, tool box w/2 drawers; 2 lg steel toolboxes; 3/4" drive socket set & 2 other sets, elec. stapler; bolt cutter, 32 ft wooden ext ladder, 4, 6 & 8 ft wooden stepladders, elec drills, log chains, cigar mold, freon gages, 3 lg levels, lg digging iron, shovels, rakes, hoes, etc, etc, GUNS, Etc Win Mod. 12 12 ga pump; Rem Mod 721 270 Win. cal w/3X (Leupold scope), Iver Johnson 12 ga single w/poly choke, Mossberg 22 cal w/Lyman scope, Batavia "Leader" 12 ga dbl bariel, Mossberg Mod 500 12 ga pump, Savage Mod 1921 12 ga. pump, pine 8-gun cabinet w/drawer, two-gun carrying case, ammo, etc Two auctions starting at approx 4 00 PM, guns at approx. 6 00 PM

TERMS: Strictly cash to strangers and out of state buyers. Local checks with acceptable I.D.

Stephen Keener & Jannette Harrison, P.O.A. for BEATRICE KEENER

Red Lion PA Ph 717 244-0295  
York PA Ph 717 741 4489  
**SECURIST Auctioneers**  
Lic. Nos. 820 & 821

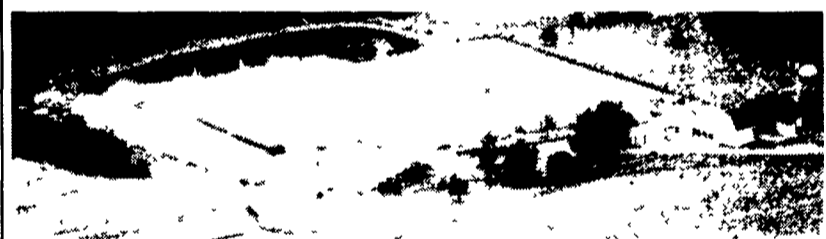
Home-made soups & pies, baked chicken pie, etc by Winterstown Fire Co. Auxillary.

See Lancaster Farming CowCam Visit our Website at www.lancasterfarming.com

### ABSOLUTE PUBLIC AUCTION VALUABLE REAL ESTATE

71 ACRE STEER & CHICKEN FARM (STREAM & POND) J.D. FARM MACHINERY - TRACTORS - J.D. COMBINE APPROX. 75 ACRES STANDING CORN - GRAIN BINS & DRYING SYSTEM - FULL LINE SHOP TOOLS THURS., AUGUST 24, 2000 9 AM - Real Estate 1 PM

LOCATION: 1354 Woodlyn Dr Denver PA (close to Fivepointville) From Exit 21 PA Turnpike Rt 272 North to Rt 897 turn right onto Rt 897 South approx 3 mi turn right onto Woodlyn Dr to farm Brecknock Twp Lancaster County Real Estate consists of 71 Acre farm w/2 1/2 sty 1858 dated sandstone & frame house w/5 bdrms., large eat in kitchen family & living rms laundry & full bath full bsmt & attic EFM stoker hot water heat



Barn is 40 x98 sandstone & frame bank barn w/attach 30 x50 & 60x80 barn (approx 175 hd capacity) & 20 x65 stave silo

Equip. Bldg. 40 x56 Pioneer round roof bldg w/separate grain dryer pole bldg

Shop masonry 30 x50 bldg w/16 overhd door

Chicken House is frame w/siding high rise 42 x365 layer house w/45 900 capacity attach egg & cooler room w/Diamond #70 Egg Packer w/HI Speed Head.

Land consists of 71 acres w/approx 50 acre highly productive tillable land Approx 6 acres pasture w/stream 1 3/4 acre pond & approx 14 acres woodland Approx 2 620' frontage along Rt 897 & Woodlyn Dr Zoned Ag Bldgs in good state of repair Farm to Be Sold to Highest Bidder Regardless of Price! Terms 10% down balance Jan 12 2001 For details financing plot plan call auctioneers at 717-445-4309 or 717-733-1006

#### TRACTORS - FARM EQUIPMENT

JD 4440 Diesel Tractor w/4 Post Canopy Power Shift & Dual Outlets  
JD 2555 4WD Diesel Trac w/Roll Gard  
Farmall H w/Loader

JD 6620 Titan II Combine Hydro w/Cab Air & Heat w/JD 643 6RN Low Tin Corn Head & JD #443 High Tin 4RN Corn Head & JD #213 Flex Grain Table w/Plastic Tines Pequea Header Wagon Case 1840 Skid Loader - Davis Backhoe (fits on 1840)

White #546 4B Auto Spring Reset Semi Mt Plow JD #710 7 Tooth Disc Chisel Plow w/Buster Bar - like new, JD #215 12 Disk J.D. #980 Field Cult. - like new; Ford #140 3B Auto Reset Plow,

12 Steel Trans Drag J.D. #7200 Conserv 4RN Vacuum Cornplanter w/Liquid Fert - like new NH #469 Haybine NH 488 Haybine Pequea #710 PTO Hay Tedder NH #56 Hay Rake, JD #338 Baler w/#40 Thrower NH #849 Round Baler NH #848 Round Baler (2) 16 Wood Thrower Wagons JD #680 Tandem Axle Manure Spreader w/Endgate Knight #716 Side Discharge Spreader, Gehl #170 Mix All Grinder Mixer w/Scaltes & Molasses Attach Pull Type 200 Gal Field Sprayer w/14 Row Booms, Brillion #1446 Stalk Chopper 12' - like new, (2) JD 716A 3 Beater Forage Wagons w/Roof & JD Tandem Axle 10T Running Gears Gehl #960 3 Beater Forage Wagon w/10T Tandem Axle Running Gear NH #28 Forage Blower JD #400 Rotary Hoe JD 4R S line Cult w/Liquid Nitrogen Attach JD 20x7 Double Disc Grain Drill w/All Box McCormick 7 Grain Drill NH #450 3 pt Sickle Bar Wagon (2) 230 Bu Gravity Wagons 300 Bu Gravity Wagon w/Engine Auger Attach, 18 10 Ton Flat Wagon 16 5 Ton Flat Wagon NH 28 Bale/Corn Elevator Westfield 60' Trans 10' PTO Auger - like new; 45 8 Auger w/PTO 50 6 Auger Elect Motor (2) 16 6 Augers - elect 30 8' Auger - Elect Harvest Mandler Trans 16 Elevator 10T Tandem Axle Trailer - no title (2) 70 Bu Buggy w/Bagger Attach Hyd Posthole Digger PTO Posthole Digger Hog Trailer Patz 11 Conveyor

GRAIN BINS Stor Mor 10 000 Bu Grain Bin w/Air Floor & Double Auger Stirrator GSI 9400 Bu Grain Bin w/Air Floor Farm Fans 14E Grain Drying System Grain Cleaner Commercial Moisture Tester & Load Probe 165KW Generator w/350 Cummins Diesel (to be sold w/Reserve) Rissler #450 TMR Mixer, Vandale 20' Double Auger 20' Silo Unloader, 1 000 Gal. Propane Tank

SHOP TOOLS - Full Line of Shop Tools including Snap on 600 & 250 ft lb Torque Wrenches, Ring Compressor Detroit Spec Valve & Seat Grinder Set plus numerous other Shop Tools Alum 12 Row Boat plus many other items too numerous to mention Approx 75 acres standing corn

NOTE: Auction to begin w/approx 3 wagons farm related items & 1 wagon shop related tools etc followed by lg equip & tractors Grain bins & related equip standing corn & generator to be sold after Real Estate Equipment & tractors have been well maintained & are in ex cond Many items bought new by the Zimmermans Turns are cash or PA check No out of state checks unless accompanied by current bank letter of credit addressed to this particular auction Food stand

Terms by MARVIN W. & ESTHER R. ZIMMERMAN 717-445-6859 Kenneth Howard, Atty.

Auction Conducted By Randal V Kline Lloyd Kreider & Roy Good Jr Auctioneers Lic #2116 #499 #513 717-445-4309

