

Pa. Grain

August 14, 2000

Report Supplied By PDA

COMPARED TO LAST MONDAY'S MARKET FOR EASTERN AND CENTRAL PENNSYLVANIA: CORN MOSTLY .03 TO .10 LOWER, WHEAT AND BARLEY MOSTLY STEADY, OATS STEADY TO .05 HIGHER, SOYBEANS STEADY TO .12 HIGHER, EAR CORN STEADY TO 2.00 LOWER. PRICES PAID DELIVERED TO DEALERS DOCK, ALL PRICES PER BUSHEL, EXCEPT EAR CORN PER TON.

SOUTHEASTERN PENNSYLVANIA
CORN NO. 2-Y RANGE 2.90-2.08, FEW REPORTED 2.15, AVERAGE 2.04, CONTRACT FOR HARVEST 1.87-1.97; WHEAT NO. 2 RANGE 1.92-2.15, AVERAGE 2.04, BARLEY NO. 3 RANGE 1.30-1.45, AVERAGE 1.37, OATS NO. 2 RANGE 1.25-1.45, AVERAGE 1.36; SOYBEANS RANGE 4.07-4.37; AVERAGE 4.23, CONTRACT FOR HARVEST 4.20-4.37; FEW REPORTED GR. SORGHUM RANGE 1.79, AVERAGE 1.75; CONTRACT FOR HARVEST 1.72; EAR CORN RANGE 59.00-70.00, AVERAGE 62.00.

SOUTH CENTRAL PENNSYLVANIA
CORN NO. 2-Y RANGE 1.99-2.15, AVERAGE 2.07; WHEAT NO. 2 RANGE 1.73-2.10, AVERAGE 1.88; BARLEY NO. 3 RANGE 1.20-1.50, AVERAGE 1.33; OATS NO. 2 RANGE

1.00-1.20, AVERAGE 1.13; SOYBEANS NO. 1 RANGE 4.00-4.12, AVERAGE 4.03; EAR CORN RANGE 55.00-75.00, AVERAGE 68.16.

EASTERN AND CENTRAL PENNSYLVANIA SUMMARY
CORN NO. 2-Y RANGE 1.90-2.15, AVERAGE 2.08; WHEAT NO. 2 RANGE 1.90-2.15, AVERAGE 1.99; BARLEY NO. 3 RANGE 1.30-1.45, AVERAGE 1.34; OATS NO. 2 RANGE 1.20-1.40, AVERAGE 1.27; SOYBEANS NO. 1 4.07-4.37, AVERAGE 4.18; EAR CORN RANGE 55.00-75.00, AVERAGE 65.50.

WESTERN PENNSYLVANIA
CORN NO. 2 RANGE 2.06-2.25, FEW REPORTED 1.75, AVERAGE 2.17; WHEAT NO. 2 RANGE 1.61-2.08, AVERAGE 1.89; BARLEY NO. 3 RANGE 1.35, AVERAGE 1.35; OATS NO. 2 RANGE 1.10-1.40, FEW REPORTED .95; AVERAGE 1.22; EAR CORN RANGE 75.00, AVERAGE 75.00.

CENTRAL PENNSYLVANIA
CORN NO. 2-Y RANGE 1.95-2.15, AVERAGE 2.11; WHEAT NO. 2 RANGE 1.90-2.00, AVERAGE 1.94; BARLEY NO. 3 RANGE 1.30-1.40, AVERAGE 1.35; OATS NO. 2 RANGE 1.25-1.40, AVERAGE 1.30; SOYBEANS RANGE 4.15-4.34, AVERAGE 4.27; EAR CORN RANGE 60.00-75.00, AVERAGE 68.33.

LEHIGH VALLEY AREA
CORN NO. 2-Y RANGE 2.05-2.15,

AVERAGE 2.11; WHEAT NO. 2 RANGE 2.00-2.15, AVERAGE 2.07; BARLEY NO. 3 RANGE 1.30-1.40; AVERAGE 1.32; OATS NO. 2 RANGE 1.20-1.40, AVERAGE 1.33; SOYBEANS NO. 1 RANGE 4.10-4.20, AVERAGE 4.15; PER HUNDREDWEIGHT, FEW REPORTED GR. SORGHUM RANGE 2.50, AVERAGE 2.50; EAR CORN RANGE 59.00-75.00, AVERAGE 64.33.

MONTHAGO
CORN NO. 2-Y 2.21; WHEAT NO. 2 2.09; BARLEY NO. 3 1.37; OATS NO. 2 1.37; SOYBEANS NO. 1 4.31; EAR CORN 72.64.

YEAR AGO
CORN NO. 2-Y 2.47; WHEAT NO. 2 2.41; BARLEY NO. 3 1.43; OATS NO. 2 1.43; SOYBEANS NO. 1 4.21; EAR CORN 73.43.

NORTH CENTRAL OHIO (Cash Grain Prices)
CORN 1.45-1.68; WHEAT 1.78-2.02; OATS 1.25; SOYBEAN MEAL: BULK 44% 152.00-154.00; BULK 48% 161.00-163.00.

Eighty-Four Livestock Auction

Eighty-Four, Pa.
Monday, Aug. 14, 2000
Report Supplied By PDA

CATTLE 359...(PDA)..Compared with last week's sale..sl. cows steady to 2.00 lower, bulls steady. **SLAUGHTER STEERS:** one Select 1-3 62.50. **HEIFERS:** couple Select 1-3 57.50 & 59.50, Standard 1-2 44.00-50.00.

COWS: Breakers 75-80% lean 39.00-44.50, Boners 80-85% lean 35.00-40.00, Lean 85-90% lean 30.00-36.00. Shells 29.50 & down.

BULLS: Yield Grade 1 1005-1730 lbs 50.00-54.00, Yield Grade 2 1115-1935 lbs 40.00-48.50.

FEEDER CATTLE: STEERS: Medium and Large 1 310-630 lbs 87.00-110.00, Medium and Large 2 425-770 lbs 70.00-84.00; **HEIFERS:** Medium and Large 1 300-500 lbs 84.00-97.00, 540-700 lbs 75.50-80.00, few Medium and Large 2 390-880 lbs 65.50-80.00; **BULLS:** Medium and Large 1 330-660 lbs 84.00-113.00, Medium and Large 2 430-955 lbs 64.00-81.00, few to 57.50.

CALVES 221...(All calves sold per cwt). **VEALERS:** Choice 135-155 lbs 85.00-100.00, Standard and Good 60-80 lbs 37.50-62.00, Utility 55-75 lbs 12.50-34.00.

FARM CALVES: Holstein bulls steady to 10.00 higher..No 1 Holstein bulls 90-130 lbs 105.00-147.50 mostly 120.00-135.00, No 2 70-130 lbs 65.00-110.00; No 1 Holstein heifers 90-110 lbs 275.00-360.00, No 2 65-110 lbs 130.00-235.00.

Beef type bulls and heifers 70-110 lbs 85.00-165.00.

HOGS 9...**BARROWS AND GILTS:** one 45-50% lean 235 lbs 50.00.

SOWS: US 1-3 255-485 lbs 32.00-37.00, two 585 & 710 lbs 37.50.

BOARS: couple 360 & 800 lbs 15.00 & 15.50.

FEEDER PIGS 6...US 1-3 39 lbs 46.00. - per head.

SHEEP 165...Slaughter lambs steady to 5.00 lower.

SLAUGHTER LAMBS. High Choice and Prime 110-130 lbs 74.00-82.00, Choice 30-45 lbs 85.00-108.00, 55-75 lbs 84.00-92.00, one 108.00, 80-100 lbs 80.00-92.00, Good and Choice 85-125 lbs 67.00-70.00.

SLAUGHTER SHEEP: 25.00-44.00.
GOATS 68...(All sold by the head).
Medium Billies 41.00-56.00, Large Nan-

nies and Wethers 55.00-83.00, Medium Nannies 41.00-50.00, Large Kids 26.00-39.00, Small 15.00-18.00.

Grantsville Livestock

Grantsville, Maryland
Report Supplied by Auction
Saturday, Aug. 12, 2000

STOCK STEERS AND BULLS 200-500 LBS. 50.00-119.00.

STOCK HEIFERS 45.00-96.00.
SLAUGHTER STEERS GOOD TO CHOICE UP TO 67.00, MEDIUM TO GOOD 45.00-60.50.

HOLSTEIN STEERS GOOD 36.00-53.50, LIGHT 35.00-55.00.

SLAUGHTER HEIFERS GOOD TO CHOICE 56.00-64.00, MEDIUM TO GOOD 45.00-55.50.

BULLS HEAVY 44.00-56.00, LIGHT 35.00-61.50.

COWS UTILITY HOLSTEINS 32.00-40.00, **CANNERS** 25.00-35.00, **CULLS** 22.00 AND DOWN.

BOB CALVES 40.00 AND DOWN.
HOLSTEIN BULL CALVES RETURN TO FARM 90-120 LBS. UP TO 110.00.

HOLSTEIN HEIFER CALVES RETURN TO FARM UP TO 225.00.

BEEF CROSS CALVES RETURN TO FARM UP TO 140.00.

HOGS TOP QUALITY UP TO 46.00, HEAVY UP TO 44.00, LIGHT 20.00-45.00, **FEEDER PIGS** BY HEAD UP TO 55.00.

SOWS 20.00-38.00.
MALE HOGS 12.00-30.00.

LAMBS 70-85 LBS. UP TO 95.00, 85-125 LBS. UP TO 90.00, 30-60 LBS. UP TO 100.00, **CULLS** UP TO 65.00.

SHEEP UP TO 38.00.

GOATS LARGE 60.00-110.00, MEDIUM 40.00-70.00, SMALL 20.00-50.00, ALL BY THE HEAD.

Valley Livestock

Athens, Pa.
Report Supplied by Auction
Monday, Aug. 14, 2000

HOLSTEIN HFR.

CALVES 155.00-350.00

BACK TO FARM CALVES 95-120 LBS 70.00-145.00, 70-95 LBS 57.50-120.00

SLAUGHTER CALVES 10.00-57.50

GRASSERS & STR CFS. 30.00-76.00.

FEEDERS 62.00-96.00.

LAMBS 77.50-107.50.

SHEEP, NONE.

HOGS 200-250 LBS 34.00-45.00.

SOWS, 28.00-33.00

BOARS 11.50-19.00.

PIGS, EACH, NONE.

HEIFERS 39.50-53.00

STEERS 45.00-55.00.

BULLS 47.50-53.50.

GOOD COWS 38.00-46.00.

MEDIUM COWS 33.50-38.50.

THIN COWS 13.00-34.50.

CATTLE MARKET STRONGER.

CALF MARKET STEADY TO SOME STRONG

HORSES AND PONIES NONE

GOATS 10.00-70.00

HEIFER CALVES AND **BACK TO FRM CALVES** SOME STRONGER.

FEEDER SALE 1ST MON. OF EA. MONTH,

DAIRY SALE 3RD THURS. OF EACH MONTH.

DON'T FORGET!

Vintage Sales Stables, Inc.

Calf Auctions on

Monday & Tuesday!

Starting Monday, August 21st at 1:00 P.M.

For more information

(717) 442-4181

(717) 768-8204

CONESTOGA VALLEY ENTERPRISES

HI-MAG Agricultural Lime Spreading HI-CAL



Cash Discount Savings on Delivery

Call Toll Free day and evening

1-800-724-3277

Serving PA, MD, Delmarva, NJ, NY & (LI)

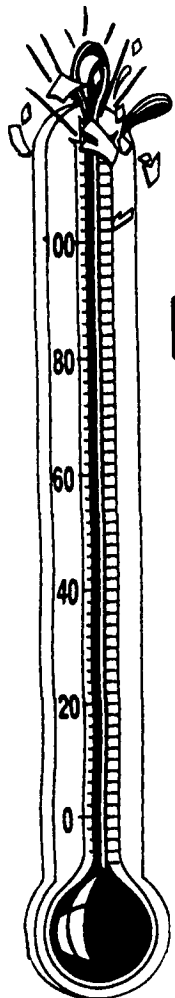
WHEN IT'S HOT BEAT THE HEAT WITH . . .

VAL WATERING SYSTEMS

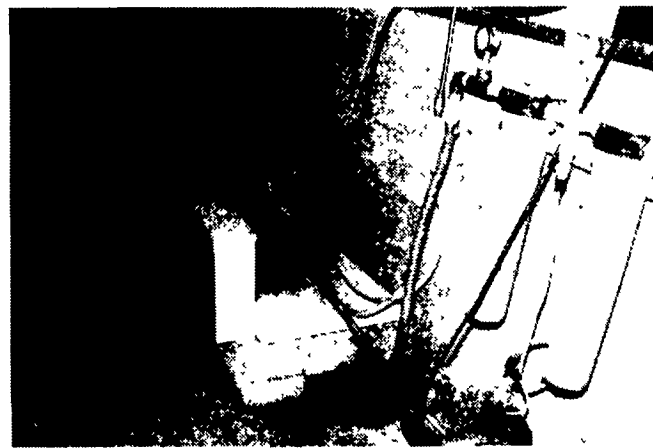
POLAIR

HIGH PRESSURE

FOG/COOLING SYSTEM



All stainless steel pipes and nozzles are located to spray 1000-psi mist into inlet air stream for evaporative cooling (up to 10-degree lower temperature) lines are sloped for complete drainage during off cycles and winter months.



High pressure pump is controlled by temperature and humidity levels. Water is filtered and injected to prevent calcium build ups in lines and nozzles.

FOR MORE INFORMATION AND FREE ESTIMATES CALL:

HERSHEY
EQUIPMENT CO., INC.

255 PLANE TREE DRIVE, LANCASTER, PA 17603

1-800-432-0988 • (717) 393-5807

FAX (717) 291-1534

"YOUR PARTNER IN AGRI-BUSINESS"

See
Lancaster Farming CowCam
Visit our Website
at www.
lancasterfarming.com