

New Holland Dairy

New Holland Sales Stables
Report Supplied by Auction
Wednesday, August 16, 2000

115 DAIRY COWS, 144 HEIFERS, 7 BULLS. MARKET STEADY.
LOCAL FRESH COWS 525.00-1375.00, 1 AT 1575.00.
LOCAL SPRINGERS 625.00-1300.00.
BETTER FRESH COWS 1550.00-1675.00.
LARGE HEIFERS 1325.00-1485.00, 2 AT 1500.00, SMALL 575.00-1200.00.
SHORTBRED HEIFERS 625.-1110.00, FEW 1235.00-1425.00.
OPEN BREEDING AGE HEIFERS 810.00-1025.00.
BULLS 360.00-610.00, PUREBREDS 510.00-775.00.
UPSTATE LOADS FRESH 975.00-1450.00, FEW 1550.00-1675.00.
FRESH HEIFERS 575.00-1400.00, 1 AT 1550.00.
SMALL OPEN HEIFERS 500.00-675.00, SMALLER 325.00-475.00.

Friend's Stockyard, Inc.

Accident, Md.

Report Supplied by Auction
Monday, Aug. 14, 2000

STOCK STEERS AND BULLS 200-500 LBS. 50.00-119.00.
STOCK HEIFERS 200-500 LBS. 36.00-104.00.
SLAUGHTER STEERS GOOD TO CHOICE 65.00-69.00, MEDIUM TO GOOD 52.00-64.50, HEAVY CHOICE OVER 1450 LBS. 61.00-64.50
HOLSTEIN STEERS HEAVY CHOICE 56.00-62.00, LIGHT 45.00-55.50
SLAUGHTER HEIFERS GOOD TO CHOICE 67.00-71.75, MEDIUM TO GOOD 45.00-64.50.
BULLS HEAVY 45.00-55.50, LIGHT

40.00-55.50.
COWS UTILITY (HOLSTEINS) 40.50-46.75, COMMERCIAL TO GOOD 30.00-40.00, CULL COWS 30.00 AND DOWN.
VEALS GOOD TO CHOICE 50.00-75.00, MED. TO GOOD 50.00-67.00.
BOB CALVES 40.00 AND DOWN.
HOLSTEIN BULL CALVES RETURN TO FARM 90-120 LBS. UP TO 140.00; HOLSTEIN HEIFER CALVES RETURN TO FARM 90-120 LBS. UP TO 350.00; BEEF CROSS CALVES RETURN TO FARM UP TO 145.00.
HOGS, TOP QUALITY, UP TO 47.00.
SOWS UP TO 32.00.
LAMBS, CHOICE, UP TO 87.00.
LIVESTOCK PRICES ARE ALL GIVEN PER HUNDRED WEIGHTS.

Livestock Cooperative Auction Market Of North Jersey

Hackettstown, N.J.
Report Supplied by Auction
Tuesday, Aug. 15, 2000

CALVES .14-2.85.
COWS .18½-.44.
EASY COWS .18-.36¼.
FEEDERS 300-600 LBS. .54-1.04.
HEIFERS .36¼-.75.
BULLS 46¼-.61
STEERS 49½-.66
HOGS .39-.43½
ROASTING PIGS EA. 1.00-32.00
BOARS .12-.15½.
SOWS .27-.34.
SHEEP .15-.69.
LAMBS EA. 20.00-43.00.
LAMBS PER LB. .25-1.60.
GOATS EA. 35.00-130.00.
KIDS EA. 10.00-85.00.
LLAMAS 150.00.
744 HEAD TOTAL.

Frederick Livestock

Frederick, Maryland
Report Supplied by Auction
Monday, Aug. 14, 2000

SLAUGHTER COWS: 117 HEAD, 1.00-2.00 HIGHER. UTILITY 40.00-44.00, CANNERS 37.00-41.00, SHELLY 37.00 DOWN.
BULLS: 4 HEAD. YG#1 1300-1900 LBS. 48.75-52.00.
FED STEERS: 2.00 LOWER. LOW CHOICE HOLSTEINS 1475-1550 LBS. 53.00-55.25.
FED HEIFERS: LOW CHOICE HOSLTEINS 1000-1400 LBS. 52.00-53.00; LOW DRESSING 48.00-49.50.
VEAL CALVES: 188 HEAD, GOOD SLAUGHTER 90-120 LBS. 50.00-62.00, CULLS 80-110 LBS. 35.00-45.00, 60-80 LBS. 22.00-30.00.
FARM CALVES: STEADY PRICES. HOLSTEIN BULLS #1 95-120 LBS. 97.00-120.00, 85-95 LBS. 75.00-90.00; #2 75-90 LBS. 50.00-70.00; HOLSTEIN HEIFERS #1 85-120 LBS. 285.00-360.00, #2 70-90 LBS. 150.00-250.00; JERSEY X 67.00-135.00; BEEF X BULLS AND HEIFERS #1 80-100 LBS. 150.00-185.00, #2 70-90 LBS. 100.00-130.00.

BUTCHER HOGS: FEW OFFERED. 1 230 LBS. AT 44.50; 1 340 LBS. AT 35.00; 1 475 LBS. AT 33.50.
STOCK CATTLE: HEIFERS 300-375 LBS. 90.00-98.00; 1 520 LB. AT 76.00.
BULLS: 1 310 LB. AT 101.00; 550-700 LBS. TO 67.00.
PIGS AND SHOATS: BY THE HEAD, 1 LOT 45 LBS. AT 36.00; BY THE LB. 3 HEAD 143 LBS. AT 51.00; 180-200 LBS. 41.00-43.00.

New Holland Horses

New Holland Sales Stables
Report Supplied by Auction
Monday, Aug. 14, 2000

224 HEAD, MARKET LOWER.
WORK HORSES 975.00-1325.00.
DRIVING HORSES 485.00-910.00, 1 AT 1400.00.
RIDING HORSES 410.00-1225.00.
REGISTERED RIDING 900.00-1350.00, FEW 1500.00-1800.00.
PONIES 175.00-400.00.
LARGE PONIES 560.00-650.00.
COLTS 280.00-500.00.
REGISTERED COLTS 285.00-450.00.

Kirkwood Produce

Kirkwood, Pa
Report Supplied by Auction
Tuesday, Aug. 15, 2000

APPLES: 2.00-7.00 ½ BU.
BEANS: GREEN 5.50-16.00, YELLOW 9.00-15.00, LIMA 12.00-26.00, ALL BU. SHELLED 1.75-2.25 PINT.
BLACKBERRIES: 1.10-1.60 PINT.
CABBAGE: 6.00 BOX.
CANTALOPES: SM. TO LRGE. .25-1.00.
CUCUMBERS: MEDIUM 1.00-5.50 ½ BU.; LARGE 1.00-2.50 ½ BU.
EGGPLANT: 2.50-4.50 BOX.
PEPPERS: GREEN SM. TO LRGE. 1.50-9.00 BU.; HOT 19.00 ½ BU.
PICKLES: 5.00-21.00 BU.
POTATOES: WHITE 1.75 20 LB., 2.00 50 LBS., RED 2.25 20 LB., 6.00 50 LBS.
RED BEETS: 1.00-4.50 15 CT.
SWEET CORN: .10-1.50 DOZ.
TOMATOES: SM. 2.50-7.50 25 LB.; CHERRY 4.00 8-QT FLAT.
WATERMELONS: SANGRIA 1.40-2.40; SEEDLESS 1.20-2.00; CRIMSON 1.0-2.00.
SALE DAYS MON., TUES., THURS., FRI., 10 A.M.

HOT DEALS!

7.9% APR
for up to 60 months*

THE DRIVING FORCE



MF 4200 SERIES TRACTORS

Check out the Hot Deals we can offer. Special financing options include 7.9% low-rate financing or waiver of finance charges until March, 2001*

- Nine models, 55 to 99 PTO hp, 2 or 4 WD
- Deluxe cab or platform models
- Perkins® Fastram™ engines
- High-capacity hydraulics
- Transmission options include Power Shuttle
- Standard or Hi-Vis™ hood lines

Stop in for a test drive

MASSEY FERGUSON®

Massey Ferguson® is a worldwide brand of AGCO Corporation, Duluth, GA
* Offers are for a limited time only and are subject to approved credit

SEE YOUR NEAREST DEALER FOR DETAILS

M.M. WEAVER & SON
N. Groffdale Rd.
Leola, PA 17540
(717) 656-2321

LEBANON VALLEY IMPLEMENT CO.
700 E. Linden St.
Richland, PA 17087
(717) 866-7518

MILLER EQUIPMENT CO.
Stauffer Road
Bechtelaville, PA 19505
(610) 845-2911

ECKROTH BROS. FARM EQUIPMENT
RD #2, Box 24A
New Ringgold, PA 17960
(570) 943-2131

MEYERS IMPLEMENTS, INC.
400 North Antrim Way
Greencastle, PA 17225
(717) 597-2176

D.W. OGG EQUIPMENT CO.
5149 Cap Stine Rd.
Frederick, MD 21701
(301) 473-4250

NORTHEAST DIST. & EQUIP.
Rt. 106
West Clifford, PA 18413
(570) 222-9090
(570) 222-9020

4910 Kernsville Rd.
Orefield, PA 18069
(610) 366-2095

SCHREFFLER EQUIPMENT
Pitman, PA 17964
(570) 648-1120

Westminster, MD
(410) 848-4585

FRANK RYMON & SONS, INC.
399 Route 31 South
Washington, NJ 07882
(908) 689-1464

TEST DRIVE ONE TODAY!

PEOPLE'S SALES & SERVICE
Oakland Mills, PA 17076
(717) 463-2735

C.J. WONSIDLER
1975 Trumbauersville Rd.
Quakertown, PA 18951
(215) 536-1935



MASSEY-FERGUSON

ATTENTION DAIRY FARMERS: NEW PRODUCT - (PROVEN) HDPE PLASTIC BARN GUTTERS

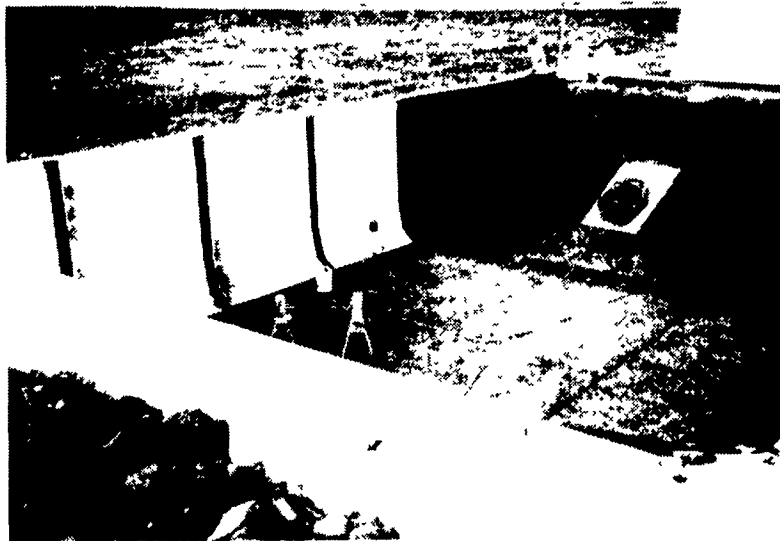
with 5/8" Bottoms & 3/8" Sides

- Customized to Fit Your Barn
- All Seams Welded & Leak Proof
- Gravity Flow System - No Electricity Needed
- Satisfied Customers
We would be pleased to Show you operating facilities
- Low Maintenance
- Installed Between Milkings



Fly-Thru Barn Clean-up

NEW & PROVEN New Style Manure Storage



Precast Walls Sealed With Welded HDPE LINER
Leak-Proof With Underground Detection Lines.
All Sizes Above Or Inground Sets-Up Quickly.

HOMESTEAD EXCAVATING CO.

151 Meckville Rd., Myerstown, PA 17067
717-933-4366