

**1999 FREIGHTLINER FLD132 DAY CAB**  
**CLASSIC XL**, 500 Detroit w/Jake, RTLO-16713A  
 13 Spd., Air Ride, 40,000# Rears, 3.58 Ratio, 214"  
 WB, (10) Alum. Wheels, Dual Stacks & Breathers.  
 Loaded, 500K Mile Engine Warranty,  
 3K Original Miles!



**1999 INTERNATIONAL 4700 LOPRO**  
 DT 466 (190 HP), Allison AT, Air Ride!  
 25,500 GVWR, 18' Supreme Insulated Body  
 w/Thermo King CD Max, Electric Standby, Roll Up  
 Rear Door, 1,200 Original Miles!

**3/4 Four Way**  
**Auto Sales**

770 W. Main  
 New Holland, PA 17557  
 717-354-3199

Kamatsu Forklift 6,000 lb  
 Dsl Eng, Rebuilt Trans.  
 Call 7:30-11:30 AM  
 717-949-3769.

SCHOOL BUS for sale, '69  
 GMC, is licensed & in use  
 over the road, \$600.  
 570-398-0226.

1975 GMC Astro 95, 350  
 Cummins, 13 spd, tandem  
 axle truck tractor, \$3,500.  
 302-653-4143.

1160 Cat eng, Ford truck  
 parts also, \$2,000 OBO.  
 410-775-2815.

Mack dump truck, 3406  
 Cat eng, 13 spd dbl over,  
 55,000 rears, will part out,  
 \$4,000 OBO. 410-775-2815.

'97 F350, 4x4, power  
 stroke diesel, auto w/air,  
 60,000 mi, ex cond, in-  
 cludes 8 1/2' snowplow w/  
 110 gal. dsl fuel tank & Di-  
 amond plate toolbox, in-  
 spected, \$22,700.  
 410-876-2143

**CASH FOR USED DIESEL TRUCKS!**

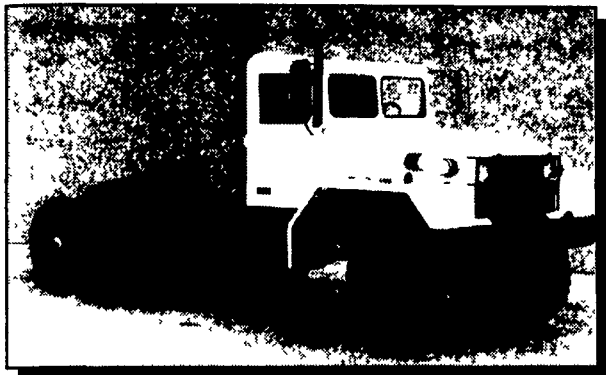
WE NEED 1/4 TON TO ONE TON:  
 • FORD DIESELS  
 • SUPERCABS  
 • CREW CABS  
 • DODGE CUMMINS  
 • 2WD OR 4X4  
 • DUALIES  
 • DUMPS  
 • UTILITY BODY  
 • FLAT BEDS  
 • CAB & CHASSIS  
 • SUPER DUTIES

**LOW MILEAGE ONLY PLEASE**  
 Before you sell or trade your diesel in  
 somewhere else for **LESS**.

**CALL US!**  
 We Pay More for Used Diesel Trucks Than Anyone.  
 800-363-2767 **TRY US!**  
 or  
 610-678-3243  
 Ask for Smokey or Kay  
  
**KELLER BROS.**  
 RD 7, Box 405  
 Lebanon, PA  
 17042

**ARMY 6x6 TRUCKS**

**2 1/2 Ton ★ 5 Ton ★ 10 Ton**



**M998 Hummers Available**  
**Harvest ★ Spreaders**  
**Feeders ★ Fuel/Water**  
**100% Financing**  
**Lease Plans**  
 (Qualified Buyers)

Dependable and Field Proven Complete Military Truck Parts Inventory

**MEMPHIS EQUIPMENT**

766 S. Third St.  
 Memphis, TN 38106  
 901-774-0600  
 Fax 901-946-1919

821 Lincoln Way West  
 Chambersburg, PA 17201  
 717-263-4194  
 Fax 717-263-4555

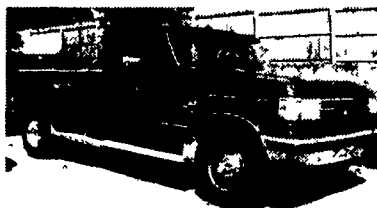
[www.memphisequipment.com](http://www.memphisequipment.com)

**THE NATION'S LARGEST ARMY TRUCK DEALER**

Anthony L.

**LANDIS**  
 AUTO SALES

3394 Division Hwy., New Holland, PA 17557 (717) 355-0644  
 Rt 322, 1-1/2 mi. west of Blue Ball



**89 FORD F-350 XLT LARIAT**  
 2WD, Longbed, Dually, 460, 5 Sp, PS  
 PB, A/C, Tilt, Cruise, Cassette, Dual  
 Tanks, Maroon, 78,000 Mi  
**\$8,500**



**95 F250 XL**  
 2WD, 351, 5 Sp, No Air, 84,000 Mi  
**\$8,500**



**97 DODGE 2500 4X4**  
 360 AT, A/C, 76,000 Mi, 8,800 GVW  
**\$13,900**



**88 CHEVY 2500 SILVERADO**  
 2WD, 350, AT, PS, PB, PDL, PW, A/C,  
 Cass, Tilt, Cruise, 2-Tone Blue, Very  
 Well Maintained, 70,000 Mi  
**\$6,895**

**Bobby Gerhart's**

**Truck World**

Mon. - Fri. 9-8, Sat. 9-3

2400  
 E. Cumberland St.  
 Rt. 422  
 Lebanon, PA  
 17042  
 717-273-7995



**95 FORD F350 4x4 EBY ALUM. FLATBED DUMP**  
 460 V8, AT, Red, Dual Tanks, Gooseneck  
 Hitch, 39,000 Miles, Excellent Condition



**96 DODGE RAM 2500 4X4**  
 ST Trm, Cummins Turbo Diesel, 5-Spd,  
 A/C, Cass., 67,000 Miles, Black #D305



**85 FORD F350 4X4**  
 6.9 Diesel, AT, A/C, Cass, 9,000 GVW, 86,000  
 Miles, White #F963



**93 FORD F350 CREW CAB DUALY**  
 5-Spd., 7.3 Diesel, XL Trm, A/C, C, T, 75,000  
 Miles, Green & Silver - Very Nice Condition - #F954



**93 FORD F250 H.D.**  
 7.3 Diesel, AT, A/C, XLT - Most Options,  
 4x2, 65,000 Miles, Blue #R649



**95 DODGE RAM 2500 4x4 H.D.**  
 Cummins Turbo Diesel, AT, AM/FM, Cass  
 69,000 Miles, Green, #D291

**OVER 120 TRUCKS**

Preferred Warranties Available on Most Trucks



**88 FORD F350 CREW CAB DUALY**  
 Jasper 460 V8, XLT AT, A/C, Most Options, OD Unit  
 Ready To Tow, Red & Black, 95,000 Miles #F930



**95 CHEV. KODIAK DUMP**  
 366, 4 Spd., Allison Trans, AT, PS PB,  
 25,950 GVW, Good Tires and Inspected,  
 Ex. Cond., Ready To Work



**97 DODGE RAM 3500 CLUB CAB 4x4**  
 Cummins Turbo Diesel, Laramie SLT, AT, A/C,  
 Most Options, Red, 67,000 Miles #D317



**97 FORD F350 19 PASS. BUS**  
 Power Stroke Diesel, AT, A/C,  
 Only 36,000 Miles, Stereo  
 Excellent Condition, White  
 #F962



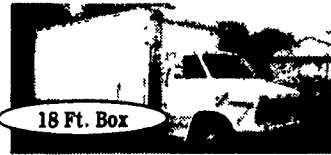
**95 FORD F250 SUPER CAB 4X4,**  
 Power Stroke Diesel, XLT, AT, A/C, Most Options  
 73,000 Miles, Black & Silver, #F886



**99 FORD F350 CREW CAB 4X4**  
 Power Stroke Diesel XLT AT A/C Most Options  
 Alloy Wheels, Maroon & Silver 23,000 Miles #F949



**95 FORD F350 SUPER CAB DUALY**  
 XLT, AT, 460 EFI, A/C, Most Options  
 57,000 Miles Dk Green #F871



**95 CHEV C30 18 FT. H.D. CUBE VAN**  
 350, AT, 14,200 GVW, 76,000 Miles,  
 Very Nice Condition #C542



**96 FORD F250 SUPER CAB**  
 H D, 4x4, AT, A/C, 351V8, 44,000 Miles,  
 Dk. Green w/Silver Sport Tape #F812



**93 DODGE RAM 3500 CLUB CAB DUALY**  
 Cummins Turbo Diesel, LE Pkg., AT,  
 A/C, Most Options, 88,000 Miles #D287



**96 DODGE RAM 2500 4X4**  
 Cummins Turbo Diesel, AT, A/C, Cass, Aqua  
 Blue, 47,000 Miles, Excellent Conduon #D319



**88 CHEV. 30 STAKE BODY**  
 350 V8, 9 ft. Flat Bed, 68,000 Miles,  
 4-Spd., Needs Paint #C546  
**SPECIAL \$5,000**



**95 FORD F250 SUPERCAB 4x4**  
 Power Stroke diesel, XLT, AT, A/C, Most Options,  
 148,000 Miles, Dk. Blue  
 - Looks & Runs Great - #F956



**97 DODGE RAM 2500 CLUB CAB 4X4**  
 Cummins Turbo Diesel AT A/C, Cass  
 Red & Silver, 44,000 Miles, #D306



**97 FORD F250 SUPER CAB**  
 4x4 Power Stroke Diesel XLT AT A/C Most Options  
 Tow Pkg., Alloy Wheels, Gold Frost 37,000 Miles #F947



**95 FORD F350 CREW CAB 4x4**  
 XL AT, 460 EFI, AM/FM/Cass Dual Tanks  
 142,000 Miles Grey & Silver, #F954



**98 CHEV. K2500 EXT. CAB 4X4**  
 6.5 Turbo Diesel Short Bed AT A/C PS PB  
 Cheyenne Pkg White - #C567