



84 Cat D3B Dozer, 80% UC  
\$366.89/Mo. or \$17,500



90 Kobelco K912 LC-II Excavator,  
70,000 Lbs Tight Solid Machine, 8900  
Hrs .....\$728.00/Mo. or \$35,000



**MINI EXCAVATORS**

96 Bobcat 325, 5700 Lbs, 1400 Hrs,  
Rubber Tracks, Backfill Blade, Aux Hyd  
\$283.86/Mo. Or \$13,500

95 Takeuchi TB15, 3400 Lbs, 1300 Hrs,  
Rubber Tracks, Backfill Blade, Aux Hyd,  
2 to choose from \$200.82/Mo. or \$9,500  
98 Takeuchi TB025 \$11,000



87 Cat 953, LGP Cab, 80% UC, 4-in-1  
Bucket \$36,000

86 Cat 953 LGP OROPS, 80% UC,  
Christopher Tree Shear \$35,000

Duopac SDR1500 60" Vibratory Roller  
w/Drum Drive, ROPS  
\$314.99/Mo. or \$15,000

1995 Dig It 198T Compact Tractor Loader  
Backhoe, 1300 Hrs,  
Kohler Gas Engine \$8,500

96 Bobcat 753, 1470 Hrs  
\$206.01/Mo. or \$9,750

Concrete Crusher For 50,000 Lbs  
Excavator \$167.61/Mo. or \$7,900

Stone SR2500 Tandem Vibratory Roller  
\$116.84/Mo. or \$3,500

(2) Light Towers, Kubota Dsl  
\$116.84/Mo. or \$3,500 ea.

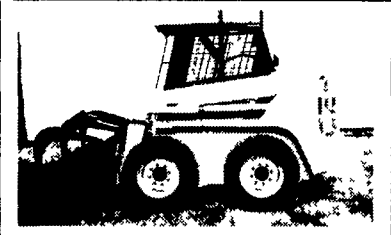
- NEW ADDITIONS**
- 87 Komatsu PC200 excavator Call
  - 87 Case 580K, cab, 4x4, new tires,  
new paint \$18,500
  - 86 Cat D4H crawler tractor, cab,  
80% UC \$32,500
  - 98 Takeuchi TB025 \$11,000
  - 96 Posi Track MB70, 600 Hrs,  
Cab & Air \$19,500
  - 95 CAT 973 LGP Series III, 50% U.C.,  
7500 hrs \$89,000
  - 1995 JD 850B Long Track, Cab & Air \$65,000
  - 85 Cat 953 LGP OROPS, 80% UC,  
Root Rake w/Grapple \$35,000
  - 96 JCB 505-22, 5000 lb., Cap, 22' Reach,  
4WD, 4 Wheel Steer, 1700 Hrs.,  
Tilting Framer \$29,000
  - 95 Chevy Kodiak w/24' Rollback Older Steel,  
Cat 3116, 6 Spd Trans, Air Brakes, 25,000  
GVW, 30,000 Mi \$491.44/Mo. or \$23,500
  - 98 Case 85XT,  
358 Hrs 470.68/Mo. or \$22,500
  - GMC Lube Truck, 7 tanks & reels w/air  
compressor \$366.89/Mo. or \$17,500

**Rentals Available Day, Week, or Month**      **Financing and Lease Purchase Available No Sunday Calls**

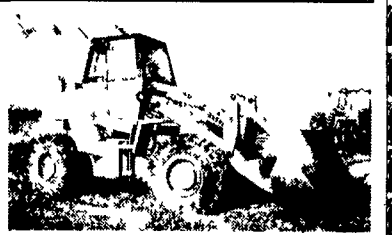
**Weaco Equipment**  
Ask for Jay Weaver  
Reinholds, PA 717/336-7375

Above payments are with approved credit for 60 months no penalty for early payoff 0% Down 2 Payments Due Immediately Trades welcome

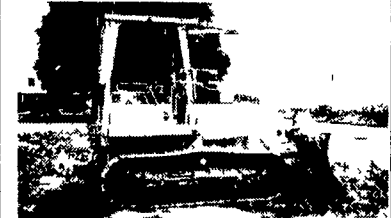
**100% Financing w/Good Credit at 8.75% Int.**



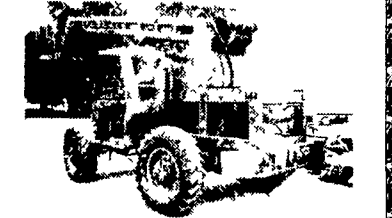
1999 Gehl 4835, 287 Hrs., w/Grapple  
Bucket or Regular Bucket...\$14,750



Case W20B, Good Rubber...\$15,500

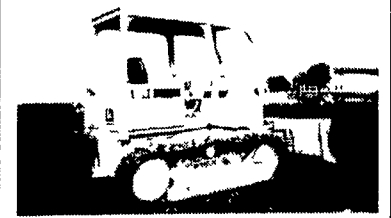


98 Cat D4C w/Ripper,  
2300 Hrs.....\$52,000



Lull 644 Shoot Boom Forklift, Perkins  
Dsl.....\$27,500

**LIFT EQUIPMENT**



94 John Deere 650G with 6-Way,  
80% UC.....\$42,000

Grove 66 Ft. 4x4  
Manlift.....\$18,000

Grove 45 Ft. 2x4 with  
1700 Hrs.....\$15,500

Simon 66 4x4 Manlift.....\$17,900

JLG 40 Ft. Scissor Lift,  
4 Cylinder Ford.....\$7,500

**GRADERS**

87 CAT 140G, Cab & Scarifier,  
Real Clean.....\$67,000

Dynapack Double Drum 66"  
Roller with Vibrator w/Cat  
Diesel.....\$15,500

**CRAWLER LOADER**  
Komatsu B57S Crawler Loader  
w/Less than 500 Hrs. on  
New Cummins Engine..\$17,900

**WHEEL LOADERS**  
Allis 745, 70% Rubber, 4.5 Yd.  
Bucket, Light & Heater,  
26" Rubber.....\$16,500

**AA Equipment**  
717/529-2512  
No Sunday Calls

1797 Robert Fulton Hwy., Quarryville, PA 17566  
• We Buy & Sell • Financing Available

**PETTIBONE 6000 LB. 4 WHEEL DRIVE FORKLIFT** 48" Hydraulic Adjustable Forks.  
492 Hours \$16,500

**Curry Supply Co., Curryville, PA**  
1-800-345-2829

**SALE or RENT**

**CATERPILLAR 215 EXCAVATOR**  
Legal Width - \$21,500

**Heavy Equipment Loader Parts, Inc.**  
Rt. 22, Grantville, PA 17028  
(717) 469-0039

**Cat 966C 4x4 Wheel Loader**  
9'6" Bucket 4 Yard; CAT 3306, 170HP;  
4 Sp. Power Shift Trans.; Tire Size 18x25  
\$17,500

**Curry Supply Co., Curryville, PA**  
1-800-345-2829

**FORKLIFTS**  
2,000 TO 15,000 LB.  
\$2,000 & upwards  
GAS/LP-DIESEL-ELECTRIC  
Cushion-Pneumatic-Rough Terrain  
New Komatsu Forklifts Available  
**PA INDUSTRIAL EQUIPMENT**  
(610) 369-9778

**CAT 953 Ldr.,** Low Hrs, Very  
Good Cond. \$38,000 OBO  
410-557-9559

**FILL-RITE PUMP SPECIAL**  
Model 1211 w/meter

Model 1211

\$ 355.00 plus tax  
1/4 hp / 12 volt / 13 gpm

Certified Petroleum Technologies, Inc.  
75 South 13th Avenue  
Lebanon, PA 17042  
www.cpt-online.com  
717-270-8910  
Master Card / Visa

**JERRE MARTIN REPAIR**  
391 N. Farmersville Rd., Ephrata, PA 17522  
(Just minutes off RT 222)  
(717) 859-3283

**Sales Service**      **Rentals Repairs**

\$48,000



'87 Cat 963 70% UC

\$120,000



97 Cat 953C Cab, Air, 3570 Hrs.

**All Machines Listed For Sale Are Also For Rent**

\$19,500



'90 Case 580K 4x4 Ext. Hoe

\$13,500



Choice of 2 '84 JD 510B 2x4 Std. Hoe

**Financing Available**

**Road Service Available Now**  
**Custom Repairs On All Makes Construction Equipment**

**WE ARE BUYERS FOR LATE MODEL CONSTRUCTION EQUIPMENT NEEDING REPAIRS**

(2) Case 1845 C's Choice.....	\$9,500	'89 JD 455G crawler loader backhoe, cleaned & painted.....	\$32,500
'86 Cat D4H, Excellent.....	\$32,000	JD 544A Wheel Loader.....	\$11,500
'94 Cat IT18F Bucket and Forks.....	\$45,000	'90 JD 555G, excellent.....	\$32,000
Cat 613 Scraper.....	\$14,000	JD 644B wheel loader, choice of 2.....	\$22,000
1981 Cat 943 Crawler Loader, cleaned & painted...	\$27,500	JD 644C wheel loader, good cond, choice of 2.....	\$30,000
'87 Cat 943 70%, UC, Rebuilt Motor.....	\$39,500	'90 NH 785 skid loader.....	\$10,500
Cat 955 crawler loader, cleaned & painted.....	\$19,000	13' quick attach head for MF 300, 410, 510 combine....	\$400
Cat 955L crawler loader, 13X series, new U/C, completely rebuilt, cleaned & painted.....	\$32,000	JD 644C wheel loader, ex. cond.....	\$33,000
Cat 955L crawler loader, new U/C.....	\$24,000	Case 455C crawler loader w/ripper.....	\$16,000
'90 Cat 963 crawler loader, OROPS, good cond.....	\$56,000	Raygo 401A Roller Drum Drive.....	\$14,000
'95 Cat 939, good cond.....	\$38,000	Fiat Allis FL5 crawler loader, 4N1 bkt, excel.....	\$16,000
'94 Cat 963.....	\$70,000	Assortment of thumbs for excavators, starting at....	\$1,000
'87 Cat 963 crawler loader w/cab.....	\$48,000	New Demaco demolition hammer, approx. 3000 lbs..	\$11,000