



IH 1066, Hinker Cab & Air, New TA, Tires 85%.....\$10,900

**USED TRACTORS**

- AC 200 On Steel, Engine Rebuilt ..\$7,400
- IH 806 ..\$6,600
- NH LX 665 Skid Loader, 1,950 Hrs., Nice ..\$14,900
- IH 986, Cab & Air, 4,700 Hrs., Nice \$12,900
- (2) IH 1466. .... \$8,800
- IH 1066 Black Stripe, Bad TA . . . \$8,600
- JD 3960 Ready For Corn Table. ....\$4,700



**MILLER'S REPAIR**  
1 Mile North of Bird in Hand  
8 Miles East of Lancaster  
Ph. 717-656-6109

**JD 730 DIESEL**

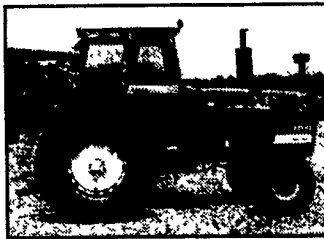
Reconditioned,  
3 pt., electric start,  
flat top fenders,  
rebuilt engine,  
good condition  
**\$6,000**  
**717/445-5796**

- IH 1086, 4 post, 5000 hrs, v g . \$12,900
- IH hydro 100, black stripe, v g .. \$9,500
- Badger liquid manure tank, 3300 gal, v.g. .... \$5,500
- IH 4366. . . \$12,000
- Landoll 20' cutting chisle, . . . \$4,000
- Krause 1927 rock flex disc,.....\$5,500

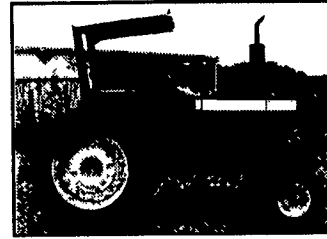
**717-428-1865**

**TANEYTOWN FARM EQUIPMENT**

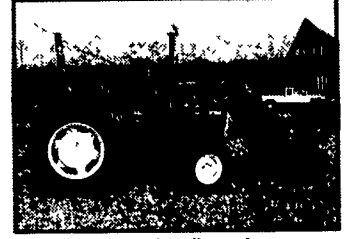
Route 194 and Brown Road 410-751-1500  
Bush Hog® King Cutter Toll Free 877/751-1500



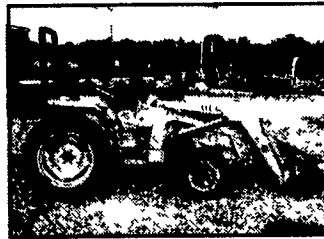
AC 7010, Recent Overhaul 4000 Hrs. \$5,995



Ford 7710, Very Nice 2500 Hrs. - \$12,500



JD 2150 w/Loader, 1400 Hrs. - \$12,900

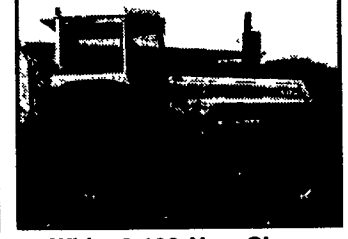


Kubota L2550 w/Loader, 2600 Hrs. - \$7,500

**Shaver Post Drivers**

HD - \$2,150  
HD - \$1,395

*We Deliver Anywhere*



White 2-180, Very Clean 3000 Hrs. - \$15,900

**TRACTORS**

- AC D14, Nice
- AC D17 Series 3, Nice
- Farmall Cub w/Mower, Plow, & Blade
- Ferguson 40 NF Straight
- Ford 1710 4x4
- 3 Ford 8N's
- INT 1066, Open
- Int 300 FH PS
- INT 354 Needs Work
- INT 400 D FH
- INT 454 w/Loader, Needs Work
- INT 656 Hydro
- INT 784 4x4

**JD 1050**

- JD 2550 w/Loader
- JD 950 PS 900 Hrs
- Kubota B1750 w/Loader
- Kubota L2550 w/Loader
- Kubota L2350 400 Hrs
- MF 240

**EQUIPMENT**

- ARPS 3 PT Backhoe Attach
- JD 327 Baler

**Hesston 530 Round Baler**

- NH 630 Round Baler
- Gehl 700 Chopper, Sharp
- NI 272 Cuditioner
- JD 18200 Drill 14x7
- Melroe 242 Drill
- Oliver 18x7 Drill
- Farmhand 835 Mixer Nice
- NH 354 Grnder Mixer

**SKID LOADERS**

- CASE 1840
- JD 675
- Bobcat 747
- Mustang 1000

**Bush Hog Loaders 20% OFF**

SPECIAL SPECIAL SPECIAL SPECIAL SPECIAL

**WISCONSIN HEAVY DUTY ENGINES**  
*Serving The Community Since 1971*

Wis.-Robin, Kawasaki, Kohler, Briggs & Stratton, Tecumseh, Honda  
Rockford and Twin Disc Clutch Parts & Accessories

Check with us for Engines to run on LP gas for tunnel fans, etc.  
**Special Price - 9 hp electric start - \$473**

Still available - Pressure Washers w/Honda Engine  
**Special - 5 hp B&S Vanguard \$269**

WISCONSIN REPLACEMENT ENGINES New & Rebuilt Short Blocks

Authorized Service Center

- Complete Rebuilding
- Large Parts Inventory

**FISHER ENGINE SERVICE**

2917 Old Philadelphia Pk. • Bird-In-Hand, PA 17505

SPECIAL SPECIAL SPECIAL SPECIAL SPECIAL

**Leaman Tractor & Parts Inc.**  
329 Brenneman Rd., Willow Street, PA 17584 (Lancaster Co.)  
717-464-2874 Fax 717-464-4130

Turn Left on Brenneman Rd. from 222 S at Reflion

DEALER INQUIRIES WELCOMED

We Now Accept

**TORQUE AMPLIFIERS & CLUTCHES**

- ★ 5 Year Warranty (Complete Unit)
- ★ Heavy Duty Sprag
- ★ Price \$695 00
- ★ 20 Years of Proven Results!
- ★ TA's Can Be Shipped UPS

The Strongest units available anywhere with a track record to prove it!

**ENGINE PARTS**

- ★ Engine Overhaul Kits for most brands, in-frame & complete out of frame kits
- ★ Excellent prices from quality suppliers
- ★ Rebuilt fuel pumps - most brands, comes with 2 year warranty
- ★ Turbo Chargers (new & rebuilt) 1 & 2 year warranties
- ★ Next Day UPS Delivery On Most Of These Items

**USED TRACTORS - SOLD WITH WARRANTY**

- Case IH 5240, 1995 cab, air, MFD, power shift, new tires 3900 hrs, very clean
- 1995 Magnum 7240, cab, air, MFD, 18x46 rear tires & duals very clean, 4450 1-owner hrs, excel cond
- Cash IH 5140 MFD ROPS w/power shift, fresh paint, new 18x38 tires
- IH 5288 MFD, cab air, late 1984 model, 20x38 tires, new, 5240 hrs - \$22,500
- IH 5488 MFD, cab, air, 1983 model, 5900 hrs, w/dual PTO & 20x38 tires & duals
- (2) IH 3488, cab, air, fresh paint, hydro trans rebuilt, 18x38 tires, like new, Excellent Cond (1) @ \$21,500
- IH 3068 fender tractor, 18x38 tires, 4200 hrs, good cond
- IH 86 hydro w/310 engine W/F/E like new, 18x38 tires
- Case IH 5250 cab, 2WD, power shift w/fresh paint, 18x38 rear tires, at 85%
- JD 730, diesel, pony start, factory fenders w/dual hydraulic both engines, running great
- JD 8640 articulating tractor w/1 pt PTO, 50 series engine
- Case IH 786 Fender Tractor, 3000 hrs very bright in appearance, runs out excel
- Case IH 510 loader w/material bucket, fits Maxum, also have mounts to put this on MX series
- IH WFE fits Super M thru 450
- Case 2590, cab, power shift, 20x38 90% tread & duals, good cond - \$12,500
- IH 2001 loader, mounts for IH 656, \$1,000
- IH 1066, red cab, 1975 model, 3500 hrs 18x38, dual PTO & hydraulics, field ready
- IH 1066, fender tractor, fresh T/A 18x38 tires, excel, dual PTO & dual hyd
- IH 656, diesel, gear drive, WFE
- IH Super W6TA-diesel runs good, good sheet metal - rare model
- IH SW-6-D, good sheet metal, engine is running good
- Farmall 450 diesel W/P/S factory W/F/E
- Farmall B-450 diesel (made in Britain) direct start diesel, factory 3 pt diff lock factory, W/F/E, looks like a Super M
- Farmall MV (high crop) glider kits, build your own high crop
- JD 4620, power shift, w/cab, rebuilt trans, fresh paint, 18x38 tires, & cast dual wheels
- MF 2805 cab, air, 240hp, w/PS, trans, 1900 hrs, tractor good in every way "cheap hp"
- MM Model UTU factory propane-currently running on gas
- AC D19 gas WFE, 18x34 tires
- AC G w/cultivators & hydraulics
- Engines (used)
- JD 7 6L, same as 466-T complete fresh overhaul
- IH Pull Type Axial Flow Combine, model 1482 w/17' header (same as 1480 combine-except pull-type)
- 1996 JD 9510 combine, 800 hrs, fully equipped, including green star, \$95,000 w/grain header
- Ford 8600, w/ dual power, excel cond, good appearance
- WFE fits JD's (after market) 620, 720, etc

**Call Us For Your Used Parts Needs**  
**SPECIALIZING IN IH BUT HAVE OTHERS**

IH 3788, 2+2	\$11,500	IH 574	\$5,000
CIH 7110, 4WD	\$38,000	Ford 4000 flat deck	\$5,800
IH 1586 Cab	\$11,000	IH 454 w/loader	\$6,000
IH 1466 Cab, black stripe	\$9,500	IH 444 w/loader	\$6,500
IH 1086, Cab, 4WD	\$13,500	Farmall 460, nice	\$4,500
IH 1086 Cab	\$13,750	Kubota L2250, 4WD, loader	\$10,800
IH 1086 Cab	\$12,500	JD 855 hydro 4WD w/loader, mower	\$11,500
JD 4440 Cab, radials, nice	\$22,500	Ford 555B backhoe cab, 4WD	\$24,500
IH 1256	CALL	Case 580C cab, extendable	\$10,000
JD 4430 Cab, fresh engine overhaul	\$18,000	NH 783 Skid Loader	\$10,500
IH 1066 Hydro	\$8,000	NH LX565 Skid Loader, 1,400 Hrs	\$14,000
IH 1066	\$7,500	Bobcat 743	\$9,000
IH 1066, recent T/A, clutch, paint	\$9,000	Bobcat 610 skid steer	\$5,000
Deutz DX 6.5 cab, 4WD	\$14,500	Backhoe attachment for Bobcat S.S.	\$4,500
CIH 5250, 4WD, CAH w/720 loader	\$37,500	MF 860 combine, 6RN & grain heads, bad engine	BEST OFFER
(2) IH 986 Cab	\$9,000 & Up	Hesston 4800, 4x4x8 square baler	\$13,000
IH hydro 100 w/loader	\$9,000	IH 2250 QT loader	\$1,800
IH 856 fresh engine, OH, nice	CALL	JD 158 loader	\$3,500
IH 186 Hydro, cab, air, nice	\$14,250	NH 320 baler	\$4,500
JD 4030	\$8,000	NI 486 round baler	\$4,000
JD 4030, cab, air	\$12,000	JD 430 round baler w/wet hay kit	\$9,000
IH 856	\$7,000	Gehl 1400 round baler	\$3,000
IH 856	\$7,500	NH 411 discbine	\$6,500
Farmall 806	\$4,750	JD 1460 9' discbine	\$5,000
CIH 5140, 4WD, cab, loader	\$26,000	JS Tedder/Rake, New	\$2,500
Ford 7710 cab, new tires, nice, 2,200 hrs	\$22,500	NH 258 rake	\$1,950
JD 2950	\$12,000	JD F930 mower	\$5,500
White 6085	\$15,000	Great Plain 26x6 drill press wheel	\$4,750
White 285	\$8,500	JD 7200 Maxemerge II vacuum, nice	\$9,500
White 2-85, 4WD, cab	\$12,500	Brillion 3pt, 64" seeder	\$1,750
MF 2-85	\$7,800	Ford 5 btm, auto reset	\$850
White 2-70 cab	\$6,500	Rhino 9 shank trailer chisel plow	\$6,000
IH 3088, ROPS	\$13,500	13 shank IH 5500 trailer, chisel plow	\$3,000
IH 786	\$9,500	Krause 19' rock flex disc	\$5,000
CIH 885 ROPS	\$14,000	24' field cultivator	CALL
CIH 885, 4WD w/Loader	CALL	Bush Hog RM60, offset ditch mower	\$3,500
IH 786	\$9,500	New Worksaver, HPD-20 post driven	\$2,650
IH 686, Nice	\$9,500	Woods Wing Mower	\$2,500
White 2-70 cab, loader	CALL	Rotary Mowers, 5', 6', 7', trail type	CALL
IH 666 Hydro	\$6,500	PTO corn sheller	\$600
IH 784	\$7,500	New Walco 3pt Finish Mower, 5', 6', 7'	CALL
MF 31	Reduced \$4,500	Yanmar B-50 mini excavator	\$11,500
IH 706D, WF	\$4,250	Trojan 1700 wheel loader, QT forks & clam bkt	\$10,500
Ford 5000 w/loader	\$5,250	Swenson self-contained cinder spreader, slide in, nice	\$3,250
Kubota 7030 4WD loader & forks, nice	\$14,000	'73 IH truck, 33,000 GVW grain body	CALL
White 2-60, 4WD, w/loader	\$10,900	'73 Ford LN9000, 20' grain body	\$16,000
Ford 5000	\$6,000	Dump trailer, 3 axle, pintle hitch, 20' box	\$4,000
MF 180	\$5,000		
IH Hydro 84 w/loader	\$10,500		
White 2-60 4WD w/loader	\$10,500		
Fordson Major dsl w/loader	\$4,500		
Farmall 560	\$3,000		
JD 3010 w/loader, rebuilt trans	\$7,000		
JD 2010	\$4,700		
JD 2010 w/loader	\$4,300		
MF 165D w/loader	SOLD \$6,000		
MF 165	\$5,250		
IH 574	\$7,000		
IH 574 Hydro	\$5,500		

**LOG BARN Equipment**

109 Quarry Dr., Bloomsburg, Pa. 17815  
**570-387-1779**  
★ Middlebury Center location  
**570-376-2400**

**We now offer financing & lease programs**