

**Public Auction Register**

Closing Date Monday 5:00 P.M.

of each week's publication

Internet Sale Register will be updated every Sat. at 2:23 P.M.

**ATTENTION Auctioneers**

All sales register info needs complete address, street, town, county & state.

SAT SEPT 16 9AM 111 acres of farmland farm equip butcher equip Corner of Blacksburg Rd and Groff Rd Annville E Hanover Twp Leb Co Pa By Alice Gerberich Nelson Eber sole auct AU 001307 L

SAT SEPT 16 9AM Real estate antiques dutch cupboard furniture HH goods old quilts tools 821 N Lime St Lanc Pa For Grace E Hartman Miller & Siegrist aucts AU 1723L

SAT SEPT 16 9AM Real estate antiques & collectibles household goods guns & out door items farm equip tools farm tractor At 175 Konick Rd 1 mile E of Matamoras Halifax RD Pa Mrs Irene Konick owner David Deiber Ed Shoop auct AU001213 L AU000842 L

SAT SEPT 16 9AM Located on Sheep Hill Rd 1 mickle E of Schaeferstown Leb Co Pa 3 acre RE antiques HH goods woodworking tools Owner Willard Eberly Martins Auct Ser vice 1078 L

SAT SEPT 16 9AM Three acre real estate three bedroom dwelling antiques household goods woodworking tools From the square of Schaeferstown take Market St S one block turn left onto Sheep Hill Rd one mile to sale on right By Willard Eberly Martins Auction Service AU1078L

SAT SEPT 16 - 9AM Fraley's Annual Farm machinery consignment sale at our farm 3 miles e. of Muncy Pa along Kepner Hill Rd By Fraley Auction Co

SAT SEPT 16 - 10AM Real estate at 697 Bull Run Rd Wrightsville pa Deborah Haugh owner Gilbert & Gilbert, aucts

TUES SEPT 19 - Fat Cattle Sale Carlisle Livestock Market Inc 548 Alexander Spring Road Carlisle PA

TUES SEPT 19 - 1PM 46 acres steer farm 19 acres farm land at 1841 W Main St Ephrata Clay Twp Lanc Co Pa Elam H Lauver Est Martin's Auction Service

TUES SEPT 19 1PM 46 Acre

vice

TUES SEPT 19 - 745PM Feeder Cattle Sale Carlisle Livestock Market Inc 548 Alexander Spring Rd Carlisle PA

WED SEPT 20 & THURS SEPT 21 - 8 30AM Wed Lawn & Garden Tractors misc items Thurs Misc items tires posts etc Farm Equip & tractors 6 miles S of Chambersburg Pa 1 mi E of marion just E off I 81 at Marion along Rt 914 Marion Auction Service

THURS SEPT 21 6PM Real estate 3BR 1 1/2 sty dwelling on Belmont Rd Leacock Twp Lanc Co OH Sat Aug 26 from 2 4 PM & 1Thurs Aug 31 from 5 30 7 30 PM Estate of Alsenia Kershner Horning Farm Agency, Inc 610-286-5183

FRI SEPT 22 - 1PM State Graded Feeder Pig Sales Carlisle Livestock Market Inc 548 Alexander Spring Road Carlisle PA

FRI SEPT 22 - 7 PM Morrisville Autumn Review Sale Morrisville NY The Cattle Exchange

SAT SEPT 23 8 30AM Horse 10AM Mel's Stables 834 Wallace Rd New Holland, PA Mel Hoover Auctioneer

SAT SEPT 23 - 9AM Fall consignment auction Farm quip & misc items Rt 522 at Village of Wagner 12 miles N of Lewis town Pa Mifflin Co Blaine Rentzel auct #AU-761

SAT SEPT 23 - 9 30AM Real estate antiques, personal property, snowblower At 1021 W Main St, Ephrata Pa By Samuel B Hess Jeffrey L Bollinger AU-3543 L Miller & Siegrist AU 1723L aucts

SAT SEPT 23 - 10AM Complete contents of Gordners Garage mechanical tools, roll-back truck tractor etc in the village of Clarkstown by Fraley Auction Co

SAT SEPT 23 - 10AM Passenger Vehicles Trucks Construction & Farm Machinery, 1450 New York Ave Wilmington DE 302 573-5005 Nationwide Auction Svsm

Steer farm located along Ht 322 Durlack Rd Ephrata Lanc Co Pa Also 19 acre farmland along Weidmansville Rd Elam H Lauver Estate Martins Auction Ser



**PUBLIC AUCTION**

Sat., Sept. 2, 2000 at 9:00 AM

Located at 1016 A Mountain House Road Jackson Twp Eastern End of Small Valley Halifax R D PA Directions Take Rt 225N 8 miles from Halifax PA or one mile S on Rt 225 from Elizabethtown PA to Mountain House Road then due S 3 miles to auction site - corner of Mountain House Road & Small Valley Road approx 25 miles N E of Harrisburg PA - take Rt 22-322 W to Dauphin PA then Rt 225N to Halifax PA Watch for auction signs

**REAL ESTATE AT 1:00 PM**  
29 ACRE GENTLEMAN'S FARM - A SIX ROOM BATH & 1/2, TWO-STORY FRAME DWELLING w/ALUM. SIDING & STORM WINDOWS THROUGHOUT

FIRST FLOOR: Large Kitchen & Dining Room Combination w/Installed Wood Stove Large Living Room & Powder Room SECOND FLOOR: Four Bedrooms w/Ample Closet Space and a Full Bathroom Full Attic - 1/2 Cemented Basement w/Outside Cellarway Covered Porch on Three Sides of Dwelling Heated by Coal Hot Water Baseboard Heat, 100 AMP Elect Service, Well Water, Own Septic System, An 18'x24' Garage 24'x36' Two-story Grain Barn w/Attached Corn Crib, 20'x24' Two-story Two Stable Barn, Hog Stable & Other Outbuildings Situated on 29 acres w/approx 11 Acres Tillable, 15 Acres Woodland, Fairly Level Terrain, Mountain-fed Spring Water Stream running through property 1264 ft Frontage along Mountain House Road & 515 Ft Frontage along Small Valley Road Be sure to inspect!

TERMS: 10% down the day of auction, balance in 45 days Additional terms the day of auction FOR INSPECTION CALL: 896-8305 Real Estate will be offered at 1:00 PM. AUCTIONEER'S NOTE: 29 plus acres located at the east end of Small Valley Road, frontage along both paved roads - ideal hunting area - many possibilities

**HOUSEHOLD GOODS FARM-LAWN EQUIPMENT - TOOLS**

TERMS: Cash or Approved Check Auction will begin with small household goods, collectibles, & tools, followed by furniture, tractor, equipment, etc - approx 1 30 PM

AUCTIONEERS	OWNER
David Deiber 896-8530 AU001213-L	William J Ribec
Ed Shoop 896-8305 AU000842-L	ATTORNEY
37 Sycamore Ave	David Lenox
Halifax, PA 17032	



**PUBLIC AUCTION MON., AUG. 14, 2000**

12:00 PM

Murry Auction Emporium  
23 N. Water Street, Lititz, PA 17543  
717 626-2636

Estate from Muncy, PA and others

Maple hutch and dry sink, trunk, lowboy, small drop leaf table, corner desk, piano stools, 6 pc. bedroom suite, side chairs, end tables, bookcases, curio cabinet, farm house table, brass items, lamps (table & floor), linens, blankets, yarn and fabric, knick knack, prints, books, Pioneer laser disc player w/movies, Foosball table, Sony play station, Guild "Pilot" bass guitar, tennis and racquetball rackets, costume jewelry, golf balls, Taylor golf clubs w/cart, general household items, Macintosh computer system (complete w/scanner), weighted hanging and free standing punching bags, Cyclops and Nashbar stationary training bikes, Nordic Track ski machine, stair climber, weight bench w/weights. Dixon 2 TR 427 mower (Kawasaki FB460V w/grass catcher, Ariens rider mower (Gear 5-8) w/snow plow, 20" Sears mower, stainless steel sink.

Box lots with many QVC items

3 Cars - 82 Cadillac Eldorado / 83 Cadillac Seville / 70 Buick Rivera

Something for everyone at this auction!!  
Consignment being accepted for August 21 Antique Auction!!

10% Buyer Premium/Visa and Master Card  
**Elmer Murry Auctions, Inc.**

-AU-648-L-  
Professional Auctioneer, Appraiser and Advisor  
Our Services Are Not a Sideline  
(717) 626-2636 Fax (717) 627-6757

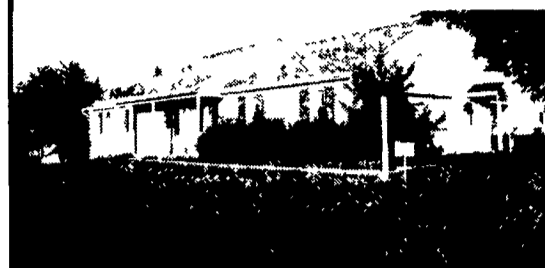
**REAL ESTATE, H.H. GOODS WARWICK TOWNSHIP**

**PUBLIC AUCTION**

SAT., SEPT. 9, 2000

Auction Time 9:00 A.M.

Real Estate 11:30 A.M.



DIRECTIONS: From Route 772 just East of Rothsville turn left onto Homestead Dr to house on left Warwick Township, Lancaster Co, PA

103 Homestead Drive, Lititz

**3 Bedroom Brick/Vinyl Rancher**

with eat-in kitchen with cherry cabinets, built-in microwave, dishwasher, garbage disposal, French door in kitchen to back porch, large living room, 3 bedrooms including a master bedroom with full bathroom plus another full bathroom on 1st floor Full basement with large finished family room with woodstove hookup, 1/2 bath, large workshop & cold cellar, 2-car finished garage, attic storage, well & public water, laundry

- \* Central AC
- \* Maintenance Free Exterior
- \* Public Water & Sewer
- \* Security System
- \* Central Vacuum
- \* Only 11 Yrs Old

OPEN HOUSE: Saturday, August 19 1 PM to 3 PM  
Saturday, August 26 1 PM to 3 PM

or by appoint call 738-0129, or help to obtain financing call Aaron at 733-3511

TERMS: 10% down payment at auction, balance at final settlement on or before October 25, 2000

NOTE: Don't miss this 1 owner house in excellent condition Great retirement or starter house. Central location to Lititz, Ephrata, Lancaster, New Holland

ATTORNEY: Michael P. Kane, 299-5251

Auction By  
**AGNES G. PIERCE**

Mel (717) 738-0129



**PUBLIC AUCTION**

AUGUST 19th, 2000 - 10:00 A.M.

**HEAVY EQUIPMENT**

**MACHINE TOOLING - CATERPILLAR FORKLIFT & DIESEL FORKLIFT, GROVE & P&H CRANES & TRUCKS**

RON GILLIGAN & SON will conduct a PUBLIC AUCTION of Machine Tooling and Several Pieces of Heavy Construction Equipment and Trucks. Located in Clearfield County. Auction 4 miles West of Phillipsburg, PA along Rt. 322 at former JEM Industries Building & approximately 28 miles West of State College, Pa. Please note direction change from last weeks issue.

The following will sell:



1992 Caterpillar Forklift - Capacity 9,850 Lb., 1991 Caterpillar Diesel Forklift, Grove 45 Ton Model TMS-375 Road Crane, P & H Model 1750 75 Ton Crane, 1990 GMC Top Kick Service Truck w/Caterpillar Engine and Side Mt. Auto Crane 1992 GMC Top Kick w/Cat Diesel Engine Includes J.M.T. 6425 Knuckle Boom.

Colchester/Mastiff 21"x100" Model 1400 Engine Lathe, Older Butler Vertical Slotter, Dean Smith & Grace 25"x168" Engine Lathe, Kitchen & Wade Type E-26 4'x11" Radial Drill, Richards Table Type Horizontal Boring Mill - 1/2", 200 Ton Custom Built Vertical Shop Press, 1963 - 48" Webster & Bennett Vertical Boring Mill (needs work), Older Barnes 24"x144" Horizontal Drilling Machine, Early '80s Automatic Wire Feed Welding Build-Up System - Includes 2 Hobart Mega Mig 650 Power Supplies, Hyd-Tech S-20 Band Saw, Large Liberty RE315 Bed Lathe SN2294.



Sale By:

**CLEARFIELD COUNTY SHERIFF'S DEPARTMENT**

Terms of Auction: Cash or Check in full day of auction before item can be removed. Letter of credit from out of state buyers

AUCTIONEER'S NOTE: All items sold "as is" "where is" you will be responsible for bringing equipment to remove your items. You will need to make arrangements with the auctioneers as to when you can come back for your equipment, and it will be moved at your expense.

AUCTIONEERS: RON J. & RON S. GILLIGAN  
PA Licensed & Bonded

AUCTIONEERS #AU339-L & #AU3430-L. 814-237-0189  
State College, PA.

Owner or Auctioneer Not Responsible In Case Of Accident.

All Oral info Day of Auction Takes Precedence Over All Written Ads