

2000 AG PROGRESS DAYS DAILY SCHEDULE

(Continued from Page 12)

Grazing and Pastures

See the effects of cow/calf pairs on warm season grasses in this introduction to intensive grazing. Bus leaves daily at 2 p.m.

Water Quality

A portable rainfall simulator shows how soil management and fertilizer or manure applications can affect phosphorus loss from the soil. Buses leave daily at 10 a.m. and 1 p.m.

GENERAL INFORMATION

- **Public pay telephones** are located on Main Street near the Information Booth, and at Main and E 5th Streets

- **A first aid station**, with an ambulance staffed by emergency medical technicians, is located in the farmhouse at the top of Main Street

- **Lost-and-found items** are kept at the Information Booth

- **Disclaimer:** Machinery, equipment, products, and services provided are for educational purposes. Their presence does not imply endorsement or recommendation by Penn State

- **Future Dates:** Tentative dates for Ag Progress Days 2001 are August 14, 15, and 16

- **Recycling:** Look for the blue recycling containers throughout the grounds. Thank you for supporting Penn State's recycling efforts!



WHAT'S NEW FOR 2000

- **Inventions and Innovations** See how Penn State research has improved ag and related technologies. See p. 2

- **Farm Equipment on the Highway** Learn about road safety for farm equipment from the Northern York County Regional Police Department. See p. 2

- **Horseless Equine Skillathon** For participants who can't bring their horses. See p. 5

- **Pasto Agricultural Museum Outdoor Exhibit and Silent Auction** See p. 5.

- **Agricultural Safety and Health Tent.** See p. 5

- **Equipment "Show and Tell"** Major manufacturers and specialty-line equipment companies show off their newest wares. See p. 11.

- **Field Demonstrations** See corn and small grain planters—no-till and conventional—in action. See p. 11

BUILDINGS, TENTS, AND EXHIBITS

Information Booth

Main St., at the top of the hill

Find information on all activities and exhibitors, as well as a lost-and-found

Visitors' Center

Main St. at West 4th St.

Looking for lodging, local restaurants, area attractions, or things to do on Penn State's University Park campus? You'll find information and directions here. Buy your Ag Progress Days shirt and hat here to support Centre County United Way

Ag Alumni Pavilion

Main St., between West 11th and West 12th Sts.

Alumni can check in, meet old friends, and see alumni-developed exhibits. Free ice water and apples while supplies last

College of Agricultural Sciences Exhibits

Building, Theatre, and Tent

Main St., between West 9th and West 10th Sts. (near the farmhouse)

Learn about inventions and innovations developed through the work of Penn State faculty and staff that bring bright new ideas to

Inventions and Innovations

Learn about inventions and innovations developed through the work of Penn State faculty and staff that bring bright new ideas to

Pennsylvania's agricultural production, environmental health and beauty, and economic vitality. Displays include Grass Tiles, a turfgrass system for sports stadiums; PennMulch (marketed for consumers as "Emerge"), a pelleted paper mulch, a new machine that separates eggshells from their interior membranes to create value-added products from waste eggshells; and Penn State's Community Impact Model (CIM-PSU), a computer model that helps communities plan their economic development strategies.

Farm Equipment on the Highway: How it Applies to You (New!)

Farmers and people living in rural areas can learn about the potential hazards of combines, tractors, and other farm equipment on the farm and on the roadways. This police presentation covers farm vehicle safety, including regulations and restrictions. Presentation at 11 a.m. (Tuesday, Wednesday) and 2:00 daily in the theatre.

"Plum Pox in Pennsylvania" Workshop (New!)

Learn up-to-date information about this devastating and incurable viral disease of stone fruit. The disease affects mostly peaches but also can harm plums, nectarines, apricots, and cherries. Workshop on Tuesday and Wednesday at 10 a.m. and 1 p.m. in the theatre. Thursday at 10 a.m. in the tent and 1 p.m. in the theatre

Insect-borne Diseases Workshop (New!)

Get current information on three diseases of concern: West Nile encephalitis, Lyme disease, and equine infectious anemia. Presentation at noon (Tuesday, Wednesday) and 12:20 p.m. (Thursday) and 3 p.m. daily in the theatre.

Publication Distribution Center

Stop by the College's Publications Distribution Center display to pick up free publications on topics ranging from agriculture and natural resources to community affairs and lawn care. Preview for-sale publications, learn how to order them, and take home a catalog listing all of the College's publications and videos.

The Farm Safety and Health Quiz Bowl (Wednesday only)

Watch 4-H and FFA youth test their knowledge of health hazards and recommended practices

on the farm in this new, exciting program in the tent. 4-H youth compete at 9 a.m. FFA youth compete at 1 p.m. in the tent.

Pennsylvania Department of Agriculture Tent

West 11th St.

Stop by the Pennsylvania Department of Agriculture's booth and learn about programs and services working to keep agriculture Pennsylvania's No. 1 industry.

Landscape, Lawn, and Garden/Ask the Experts Tent

East 7th St., just off Main St.

Whether you're a homeowner, gardener, or professional landscaper or grower, Penn State faculty and extension agents will help diagnose your plant, insect, and mite problems. Additional advice will be available on indoor plants, turf, flowers, tree fruit, small fruit, woody ornamentals, and vegetables, as well as the Plum Pox virus

Cut Flower Beds and Tent (combined with Landscape, Lawn, and Garden/Ask the Experts Tent)

East 7th St., just off Main St.

Professional growers and home gardeners interested in cut flowers can learn about varieties, weed control, and business opportunities. See more than 100 new varieties, from asters to sunflowers, as well as unusual flowers not widely known in the market. Flower arranging demonstrations will be held daily at 11 a.m. and 2 p.m. and Wednesday at 6 p.m.

Family Learning Hub

Main St., between West 8th and West 9th Sts.

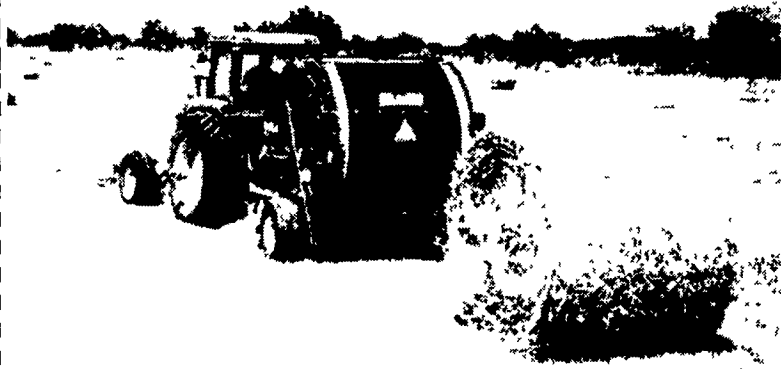
The Family Room Building

Discover how Penn State programs and other agencies have joined forces to improve the health and safety of Pennsylvanians. Take a break with your children at the Kids Corner (includes a water table for water play!), read stories, work on art projects, listen to a storyteller, then go on a treasure hunt and win a prize. Exhibits include Healthy Meals, Healthy Families, Cultivating Life Skills, Fraud and Ripoffs, Water

(Turn to Page 21)

All of the Features None of the Headaches.

M&W Is Simply the Best!



- Fewer Moving Parts*
- Lower Maintenance
- No Belts to Break
- Gentle on any Crop

Available At:

B EQUIPMENT INC
5422 Wayne Highway
Waynesboro, PA 17265

BULL INTERNATIONAL INC
291 Cameron Road
Washington, PA 15301

CERESVILLE NEW HOLLAND
8102 Liberty Road
Frederick, MD 21701

DAYTON EQUIPMENT INC
Rt. 42 South
Harrisonburg, VA 22801

ECKROTH BROS. FARM EQUIPMENT INC
Junction of Hwy. 143 & 595
New Ringgold, PA 17960

ECKROTH EQUIPMENT CO
4910 Kearsyville Rd
Orefield, PA 15069

HIRTZLER FARM & FEED INC
3209 Buckingham Road
Powhatan, VA 23139

HINES EQUIPMENT
6257 Admiral Peary
Cresson, PA 16630

HINES EQUIPMENT
Old Rt. 220 North
Bellwood, PA 16601

J.E. ANDREW & SONS FARM AND LAWN EQUIPMENT INC
2931 Litch Road
Espyville, PA 16424

RIEHOOD EQUIPMENT
Route 1 Box 118
Bruceton Mills, WV 26225

When compared to competitive Bilers

M&W is a registered trademark of Alamo Group Inc
© 1999 Alamo Group Inc

SEE US AT AG PROGRESS DAYS AUGUST 15, 16, 17 - WEST 10th ST.

MAHONING OUTDOOR FURNACES

WORKS FOR ALL EXISTING SYSTEMS

3 YEAR WARRANTY

SAFER! LESS CHANCE OF HOME FIRE. NO CARBON MONOXIDE FROM FURNACE IN HOME.

EFFICIENCY RATING 83% TO 85% WITH OIL OR GAS FIRED UNITS

"THE NATURAL WAY TO HEAT"

COAL OR WOOD THIS BOILER HAS GRATES

HEAT YOUR POOL
HEAT TRANSFERRED BY UNDERGROUND PIPES
25' to 100'

HEAT YOUR HOME, FARM OR WORK BUILDINGS WITH ONE FURNACE

HEAT YOUR WORKSHOP

NO DUST OR DIRT BEYOND THIS POINT

HEAT YOUR GREENHOUSE

CARRY FUEL NO FURTHER THAN HERE!

DOMESTIC COIL STANDARD ON ALL MODELS!

CHARGE ONLY ONCE 8-12 HOURS

STANDARD MODELS WOOD - COAL

MULTI-FUEL MODELS

WOOD - COAL - OIL - GAS

WASTE OIL

Mahoning Outdoor Furnaces

1-800-692-5200

www.mahoningoutdoorfurnace.com
Dealerships Available in Some Areas