

7511 Allentown Blvd.
Harrisburg, PA 17112

**AFFORDABLE
CARS AND TRUCKS, INC.**

717-652-1925
FAX 717-652-4888
www.affordablecarandtruck.com

**75 TRUCKS
IN STOCK**

"You Gotta Believe!!"

Exit 27, Rt. 81; Rt. 22 East of Harrisburg; 3 Miles North of Hershey



**89 Ford Ranger
4x4 XLT**
V6, AT, A/C, Only
70K! Sharp! 15
Small 4x4 Pickups
Available
\$3,995-\$8,995

**95 Dodge Ram
2500**
Cummins Turbo
Diesel, 4x4, SLT
Laramie, AT, A/C,
Most Options,
111K Miles,
Excellent Shape
\$14,995



**95 Ford F250 XL 4x4, 8600
GVW, Extra Nice Trucks, Choose From
5-Spd or Automatic,
Fully Loaded, Only 78,000 Miles
\$10,995 & Up**



**93 Ford F250 4x4
XLT Lariat H.D.**
International Diesel, AT, AC, PW, PL,
Stereo and more, 170K Miles,
Well Maintained - Like New Shape,
All Highway **\$8,995**



88 Chevy Scottsdale 4x4
Ext Cab, Longbed, 350 V8, Auto, A/C,
Loaded! 100K
\$8,500



93 Chev 2500 H.D.
Silverado, 4x4, 350, AT,
8,600 G V W A/C, Most Options,
Mint Cond , 108K Mi
\$10,995



94 Chev 1500 Silverado
4x4, Ext. Longbed, All Black, 350 +
Loaded, Extra Clean, 100K Mi
\$12,995



87 Ford F250 XLT Lariat
4x4, Super Cab, 5.8 Gas,
Fully Loaded, AT, A/C, PW T,
More, Mint Condition, 100K Mi
\$7,995



95 Chev 1500 Silverado 4x4
Choose from 350 V8, Loaded **\$12,995**
or Economical V6, Loaded **\$8,995**
Both Super Clean, Low Miles,
One Owners!



86 Ford F250 XLT
4x4, H D 8600 GVW, 1-Owner, New
Jasper 351 V8, AT, 2-Tone Paint,
Western Angle Plow, Mint Cond Look
\$7,495



91 Ford F250 XLT Lariat
4x4, 351, AT, AC & Loaded Up,
Black & Beautiful, Mint Cond Truck,
100K Mi
\$8,995



**1997 CHEVY K3500
SILVERADO EXTENDED CAB**
4x4, Dually, 454 Vortec, 5 Sp. A/C, AM/FM/
CD, Cruise, Tilt, PW, PDL, 10,000 GVW,
4 10 Ld Shp Rear, Black, 34,000 Mi
\$23,500



99 CHEVY K2500 4WD CHEYENNE
350 Vortec, AT, A/C, Cass, Cruise, Tilt,
Stahl Utility Bed, 8600 GVW,
12,000 Mi Green
\$22,500

MARTIN'S AUTO SALES

1025 W. Main St. New Holland, PA 17557

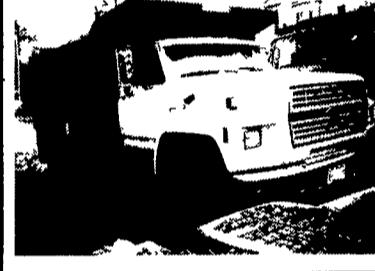
(717) 656-6621



**1989 GMC C70, 366, 5-2 sp, 28K
GVW, Hy Br, 50K Original Miles,
Full Double Frame, 22' Box **\$8,800****



**1992 Ford F700, 7.8, AC, Diesel,
Auto, Hy Br, 30K GVW, 80K Miles,
16' Reefer Body, TK Unit
w/Stand By, Clean Unit **\$18,500****



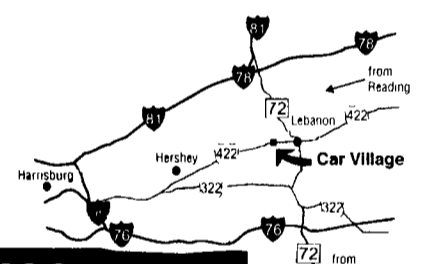
DUMP TRUCKS
**1989 Ford F800, 429, 5-2, A/B,
33K GVW, 40K Miles **\$14,500****
**1988 GMC 427, Auto, A/B, 35K GVW,
60K Miles **\$10,500****
**1987 F700 370, 5-2, Hy Br, 24K
GVW, 36K Miles, Original Cond **\$13,800****
**1986 Brigadier 3208, 5-2, A/B
33K GVW, 70K Miles, 16' Fold-Down
Side Body **\$8,800****

978/462-1000

Business Hours:
Mon.-Fri. 9 to 9;
Sat. 9-4

2300 W.
CUMBERLAND ST.
(Rt. 422)
LEBANON, PA 17042
(Across From
Lebanon Valley Mall)

CAR VILLAGE
HEAVY DUTY TRUCKS



PHONE 717-274-2000 Toll Free 1-800-650-1420

<p>ONLY 18,000 MILES 96 FORD F250 4 DOOR 4 Wheel Drive - This One is Like New! Local 1 Owner, Loaded XLT, Powerstroke Turbo Diesel, AT, A/C, Tow Pkg., Dual Tank, 40/20/40 Seat, It is Perfect! A Must See!</p>	<p>550 CHASSIS CAB 99 FORD XL Big, Strong 17,500 GVW, 19.5 Rubber Powerstroke Turbo Diesel 6 sp Trans Vinyl Floor & Seat, Very Clean & Ready For You.</p>	<p>6 SPD POWERSTROKE 99 FORD F250 SUPERDUTY 4X4 Heavy Duty 3/4 Ton 8800 GVW, Powerstroke Turbo Diesel 6 sp Trans., A/C Limited Slip Axle, Very Clean Inside & Out, Only 29,000 MI Remaining New Tk Warranty</p>	<p>HEAVY CHEVY - 1 TON 94 CHEVY K3500 4 Wheel Drive, Real Nice, Only 65,000 Original Miles, High Output 6.5 Turbo Diesel, AT, A/C, Heavy Duty Tow Pkg., Heavy Duty 9200 GVW, The Nicest 1 Ton Chevy Out There! \$17,900</p>	<p>ONLY 15,000 MILES, 4X4 DUALLY, 95 DODGE 3500, You Gotta See & Drive This One Cummins Turbo Diesel, AT, A/C, Heavy Duty Tow Pkg, Dana Axles, Heavy Duty 10,500 GVW</p>
<p>ONLY 50 MILES, 2 WHEEL DRIVE 99 FORD F250 XL Package, A/C, 6 Speed Trans., Powerstroke Turbo Diesel, Limited Slip Axle, Like New, All New TK Warranties \$23,900</p>	<p>450 CHASSIS CAB, 99 FORD SUPER DUTY Heavy 15,000 GVW Powerstroke Diesel, 6 Sp. Trans. Loaded XLT, A/C, 19.5 Rubber, Short 141 W B., 60" C.A. Hard To Find, Only 20,000 Miles</p>	<p>4x4 MECHANICS TRUCK 99 CHEVY K2500 SUPER CAB Runs Good, Looks Good, Local 2 Owner, 350 V8, AT, No Rust \$10,900</p>	<p>5SP CUMMINS 98 DODGE 2500 QUAD CAB 4 WHEEL DRIVE Real Nice, Only 44,000 Mi, 24 Valve Cummins, 5 Sp Trans., A/C, All Options, Tow Pkg., Chrome Wheels, A Very Strong Truck, Great Tow Machine</p>	<p>1 TON DIESEL, 99 FORD F350 4X4 Like New, Only 16,000 Miles, New Tk Warranty Powerstroke, Turbo Diesel, AT, A/C, Comfortable, 40/20/40 Seat, Loaded XLT, Solid Front Axle, Aluminum Wheels</p>
<p>ONLY 19,000 MILES, 97 FORD F250 SUPER CAB SHORTBED, 4X4 Absolutely Perfect Like New 5 Ft Bed, Loaded XLT, Powerstroke Turbo Diesel, 5 Sp Trans, A/C, All Power Equipment, Trailer Tow Pkg, Aluminum Wheels & Lots More, Must See & Drive</p>	<p>360 GAS 98 DODGE 2500 4X4 Laramie SLT Pkg, Beautiful, Only 21,000 Mi., Auto A/C, All Options, Chrome Wheels, Tow Pkg, Limited Slip Axle, It's Ready To Go, Only \$19,900</p>	<p>GOOSENECK HAULER, 95 FORD F350 4 DOOR 4X4, All Ready To Go, Gooseneck & Class 3 Hitches, Powerstroke Turbo Diesel, 5 Sp, A/C, 4 10 Gears, Frame Mount Tool Box, Only 37,000 Miles, Come See & Drive</p>	<p>TOW MACHINE - 2 WHEEL DRIVE 98 DODGE CLUB CAB DUALLY Only 66,000 Clean Miles, Strong Cummins Turbo Diesel, Heavy Duty 5 Sp Trans., A/C, Great Tk to Tow the Big Load</p>	<p>MECHANICS BODY 2 WHEEL DRIVE 97 FORD F350 Only 34,000 Miles, Nice & Well Maintained Powerstroke Turbo Diesel, 5 Sp., A/C, 9 Ft. Body</p>
<p>4 DOOR 4X4 PERFECT 97 FORD F350 XLT The Nicest 30,000 Mile Tk Anywhere, Powerstroke Turbo Diesel, AT, A/C, Tilt, Cruise, Power Everything, Tow Pkg, Aluminum Wheels, A Must See & Drive</p>	<p>ALUMINUM WALK-IN 94 CHEVY Very Clean, Almost New, Only 36,000 Miles, 350 V8, AT, A/C, Roll Up Rear Door, Runs, Drives & Looks Great \$16,900</p>	<p>ONLY \$23,900 99 FORD F250 4X4 SUPER DUTY Powerstroke Turbo Diesel AT, A/C, Tow Pkg., Limited Slip Axle, Heavy 8800 GVW, Great Price On A Great Truck</p>	<p>5 SP POWERSTROKE 4 WHEEL DRIVE, 95 FORD F250 XLT A Nice One, Only 59,000 Clean Miles, Powerstroke Turbo Diesel 5 Sp., A/C, Tilt, Cruise, 40/20/40 Seat, Limited Slip Gear</p>	<p>QUAD CAB 99 DODGE 2500 4X4 Like new, Only 24,000 Mi., All Remaining New TK Warranty, Laramie SLT Pkg., 24 Valve Cummins Auto A/C, Power Everything, Dana Axle Limited Slip Gear</p>
<p>CHASSIS CABS - FORD SUPER DUTY 4 AVAILABLE - 2000 450 Series, Diesel Stick, 99 450 Series, Diesel AT; 99 550 Series, Diesel Stick, 99 550 Series, Diesel Stick</p>	<p>4X4 STAKE DUMP 98 GMC 3500 12 Foot Body, 350 V8, AT, A/C, Limited Slip Axle, Very Clean Truck And Waiting For You. Only 40,000 Miles.</p>	<p>4X4 DIESEL SUPER CAB 98 FORD F250 XLT A Real Good Looker, Come & See, Only 47,000 Mi, Powerstroke Diesel, AT, A/C, Captain Chairs, Dual Tanks, Aluminum Wheels</p>	<p>4x4 MECHANICS TRUCK 97 FORD F350 XL Powerstroke Turbo Diesel, Only 39,000 Clean Miles, Stahl Body, Ladder Racks, Tow Pkg., Put It To Work</p>	<p>\$22,900 4x4 CUMMINS DIESEL 97 DODGE 2500 Heavy Duty 3/4 Ton Awesome, Impressive Cummins Diesel, AT, A/C, Power Everything, Chrome Wheels, Tow Pkg. 4 10 Limited Slip Gear, A Must See</p>