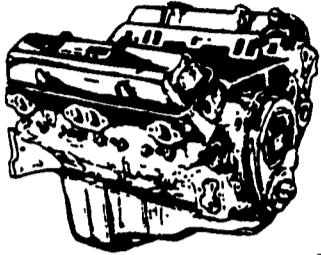


JONES

**GENUINE
GM Parts**

**Nothing's better
than an original.**



GM GOODWRENCH
350 V8 1973-85
Part Number
10067353
New Engine - Not
Rebuilt
36 Month or 50,000
Mile
Warranty

New Engine - No Core Fee **\$1,295⁰⁰**

**WE'LL
MATCH ANY
COMPETITOR'S
PRICE!**

**Goodwrench
Transmissions
Now In Stock!
Call For
Great Prices**

Call 394-0711 for prices on other
New or Remanufactured
Goodwrench Engines. 2.5 Liter thru
454 cid. Gas and Diesel

Chevrolet - Pontiac - Olds - Buick - Cadillac - GMC

JONES GM PARTS CENTER

1335 Manheim Pike, Lancaster, PA 17604
Easily Located on Rt. 72 Just off of Rts. 283 & 30
Hours: Mon-Fri 7:30 a.m. - 8 p.m. Sat 7:30-3
(717) 394-0711

MORE THAN JUST POWER.



USED TRUCKS FOR SALE

- 1997 FORD MAXIVAN, AT, 5 4L V8,
15 Passenger, 21K miles **\$18,900**
- 1996 FORD F250, Ext Cab 4x4, Power Stroke Diesel,
5-Spd, No A/C, Short Bed, Red, 72K Miles **\$17,500**
- 1996 FORD F450, Diesel, 2WD, 5-Spd,
10 Ft. Flatbed, 120K Miles **\$15,500**
- 1995 DODGE RAM 2500 4x4, Cummins Diesel,
AT, A/C, PW, PL, Black & Beige, 111K Miles **\$15,700**
- 1994 FORD F450 SUPER DUTY, 2WD, 12' Box,
5 Spd Diesel, No Air, 68,000 Miles **\$14,500**
(Without Box) **\$13,500**
- 1987 CHEV. C30 DUALY, 8ft Bed Setup for Towing,
4 Spd, 2 WD, No A/C **\$5,500**

**SCHAEFFERSTOWN
AUTO & TRUCK SALES**
Rt. 501, 1-1/2 miles South of
Schaefferstown
717-949-2812



1996 Freightler low mileage,
17' heated alum J&J
body, 72" sides, roll tarp,
24x5 alum bub wheels.
Ravens air ride dump
trailer, 38x38 spread axle,
66" sides, roll tarp, coal
chute, swing gate, bud
wheels. Ravens air dump
trailer 36x36, new floor,
roll tarp. Call
717-624-7259.

96 Hillsboro gooseneck
trailer, 6' deck, 28' long
w/beavertail, tandem
axle dual wheels w/elect.
brakes, very good cond.
610-932-8999.

1989 Dodge 350 mason
dump truck, auto, P/S,
P/B, radio, low miles, w/
Meyers snow plow, new
paint, \$7,500.
908-735-5532, dealer.

85 CHEV C60
366 Gas, 4 Spd., w/2 Spd. Rear, 21,200 GVW,
Central Hydraulics, 29,000 Orig,
1 Owner Miles. ... **\$12,500**

REBER AUTO CO.
Lincoln Ave. & Cumberland Sts.
(for 29 yrs.)
Lebanon, PA **717-273-5941**



HUBCO

133 HAUSMAN ROAD, ALLENTOWN, PA 18104-9321
(610) 395-5875
or Toll Free - **888-322-1599**



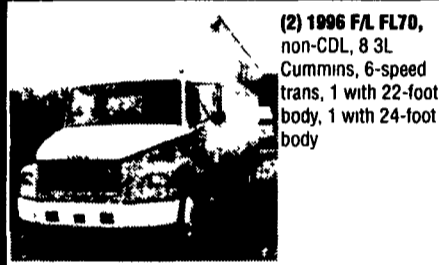
1996 FORD AEROMAX, 68" stand-up sleeper, 3406
CAT 475 HP, 10 speed OD trans, air suspension,
aluminum wheels and tanks, nice owner/operator
specs Let's talk!



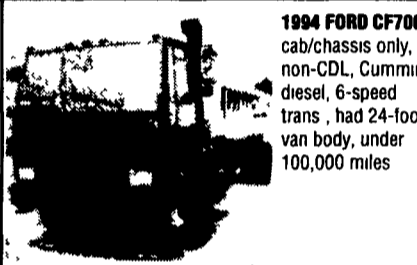
1989 WHITE GMC, tandem sleeper tractor, 365 H P
Cummins, 9-speed trans, spring suspension Will
consider offers



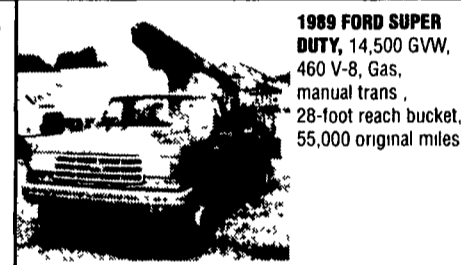
1997 GMC 3,500HD, 15,000 G V W, 5 speed trans,
6.5L diesel, 9-foot stake body, 73,000 miles, balance
factory engine warranty



(2) 1996 F/L FL70,
non-CDL, 8 3L
Cummins, 6-speed
trans, 1 with 22-foot
body, 1 with 24-foot
body



1994 FORD CF7000,
cab/chassis only,
non-CDL, Cummins
diesel, 6-speed
trans, had 24-foot
van body, under
100,000 miles



**1989 FORD SUPER
DUTY**, 14,500 GVW,
460 V-8, Gas,
manual trans,
28-foot reach bucket,
55,000 original miles

AL HAMILTON USED TRUCK SALES

P.O. Box 157 • 55 Doe Run Road • Manheim, PA 17545

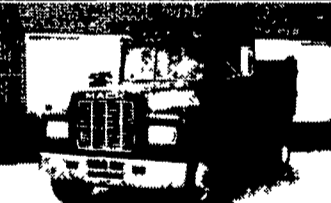
Phone: 717-665-7145 • Fax 717-665-2137

★★ "CLEANEST
TRUCKS
AROUND" ★★

**SUMMER SALE
All Prices
Reduced!**



'96 CHEVY KODIAK
C&C, 3116 Cat, 250 HP,
6 Spd. Trans., A/C, Air Brakes,
184 W.B., 108 C.A., 33,000 GVW,
Pintle Hook w/Air Hook-Up,
52,000 Actual Miles **\$26,500**



'89 MACK
New 10' Dump, E-6 Mack,
275 HP, 9 Spd. Trans.,
Fuller 35,000 GVW
\$29,500



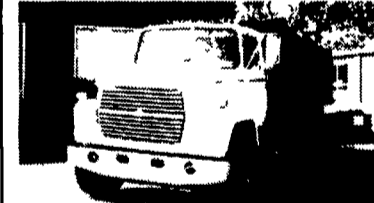
'92 FORD LN8000
C&C, 7.8 Ford Diesel, 210 HP,
6 Spd. Trans., Custom Cab, Air
Brakes, 234 W.B., 168 C.A.,
33,000 GVW **\$18,500**



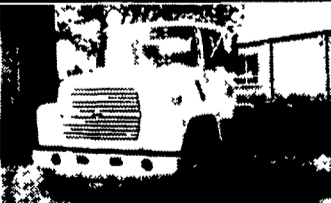
'94 FORD F700
C&C, 429 Gas, 5 Spd. Trans.,
14,000 Actual Miles, 207 W.B.,
140 C.A., Like New
\$19,500



'86 FORD LN8000
C&C, 3208T, 250 HP, 5 Spd.
Trans., 2 Spd. Rear, Custom Int,
33,000 GVW, 222 W.B.,
156 C.A., Air Brakes **\$15,500**



'86 FORD LN8000 16'
Flat Dump, 3208 Cat, 210 HP,
5 Spd. Trans., 2 Spd. Rear,
33,000 GVW, Air Brakes
\$19,500



'95 FORD LN8000
C&C, 8.3 Cummins, 210 HP,
6 Sp. Trans., Custom Int.,
Air Brakes, A/C, 260 W.B.,
192 C.A., 35,000 GVW **\$23,500**



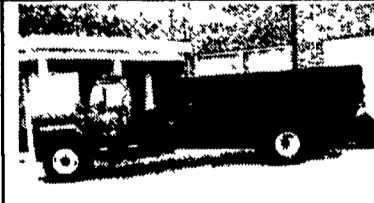
'93 INT. 4900
w/18' Morgan Box & Lift Gate, 8'
High, 102" Wide, DT-466, 5-Spd.
Trans., 35,000 GVW, A/C, Air
Brakes **\$19,500**



'93 INT 4900
C&C, DT 466, 6 Spd. Trans.,
Custom Int., A/C, 32,000 GVW,
254 W.B., 186 C.A.
\$19,500



'78 FORD LTS 9000
15' Dump, 6-71 Detroit, 4x4
Trans, 60,000 GVW,
Nice Older Truck
\$12,500



'85 INT. 1700 16' FLAT DUMP
9L Engine, 5 Spd Trans., Hyd
Brakes, 25,000 GVW
\$14,500



'94 INT. 4700 C & C
DT408, 5 Spd. Trans,
Hyd. Brakes, A/C, 254 W.B.,
186 C.A., 25,500 GVW
\$21,500



'89 FORD LN8000
New 10' Dump, 7.8L Engine,
240HP, 6-Spd. Trans.,
33,000 GVW
\$21,500



'98 EAGER BEAVER
10 HA-PT, 22' Deck, 6' Ramps,
102 Wide, Air Brakes,
25,000 GVW, Brand New
\$9,500



(3) 24' VAN BODIES
\$2,500 Each



22' FLAT BED
w/Racks & Lift Gate
\$2,500