



95 DODGE RAM, 1-TON DUALY, CUMMINS DSL., 4X4 PICKUP, BED DUMPS, AUTO, AC, VERY NICE COND., 260,000 MI. - \$16,500 OBO (215) 536-9239

1985 Freightliner conventional 3406 Cat, 15spd, 60" sleeper, long wheel base would make good cab & chassis for 20' dump. 717-597-5623.

'72 GMC 4x4 tow truck, Weldbilt body, new eng, 4 spd trans, late model diff, PS, tilt wheel, dual batteries, \$4500 obo. 215-598-3768 Bucks Co

85 Mack R E6, 350, 10 spd., T5 Budd wheels, re-manufacture engine. 610-562-7801 \$8,500 OBO. Leave message.

1990 Dodge D-250 360 4 spd., extra nice, \$4,500 Lamar's A/S 717-665-2617.

88 Frtln tractor, big bunk, lots of S.steel, 95 Talbot S.deck trailer 48x102 spread. 570-374-1608.

CHAPMAN FORD LINCOLN MERCURY NISSAN

717-272-7671

Parts Dept. Open Daily 8-5 Sat. 8-12 717-273-8168




LEBANON

20th & Cumberland Sts. Rt. 422 West 9-9 Daily, 9-5 Sat.

USED TRUCKS & CARS

89 FORD F150
Flatbed, 5 Sp, 6 Cyl., 300 ft., Low Mileage \$5,150



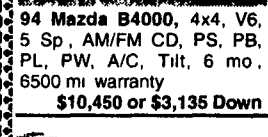
94 Mazda B4000, 4x4, V6, 5 Sp, AM/FM CD, PS, PB, PL, PW, A/C, Tilt, 6 mo. 6500 mi warranty \$10,450 or \$3,135 Down



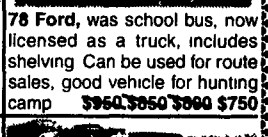
76 Ford, was school bus, now licensed as a truck, includes shelving Can be used for route sales, good vehicle for hunting camp ~~\$950~~ ~~\$950~~ ~~\$990~~ **\$750**



89 Mazda B2200 Short Bed, 4 Cyl, 5 Sp, 3 Mo. 3500 Mi Warranty \$3,250 or \$975 Down



87 Dodge Dakota, Long Bed, 4 Cyl, 4 Sp 2,950 or \$885 Down



84 Ford Ranger Long Bed w/Cap, 4 Cyl, AT \$2,450 or \$735 Down



96 Ford Ranger Supercab, 4x4, 4 Spd, w/OD, 6 Cyl., A/C, C, T, Cass. \$4,450 or \$1,350 Down



Dozens of Cars & Trucks - Call For Complete Listing

Vans Available For Amish Hauling. Cars, Trucks & Vans in Every Price Range Financing Available. Tag, Title & Notary Service

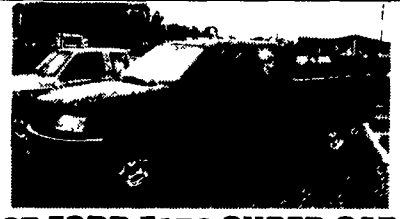
CAR CORRAL
925 Robert Fulton Hwy Quarryville, PA 17566
717-786-5131
Mon-Thurs 9-8 Fri 9-9, Sat 9-5



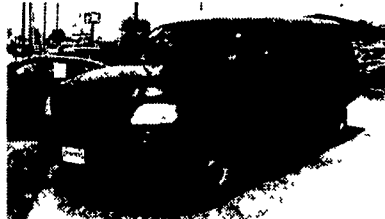
94 FORD F150 XLT
4x4, 28,000 Miles, #P4473



99 FORD EXPEDITION
Eddie Bauer, Loaded



97 FORD F150 SUPER CAB
Lariat, 5.4L V8, AT, A/C, 2WD, Most Options, 25,000 Miles, Black, #P4474
\$20,998



2000 FORD F150 XLT
Extend Cab, 4x4, #PL4502



98 FORD RANGER SUPER CAB
4x4, XLT, AT, A/C, Most Options, Flairside, Low Miles, Sun Roof, Gorgeous Truck, #P4420



98 FORD EXPLORER XLT
4x4, 4 Door, AT, A/C, V6, Leather



96 FORD RANGER SUPERCAB
STX, 4x4, 4 Spd. w/OD, 6 Cyl., A/C, C, T, Cass.



95 TOYOTA TACOMA
4X4, 30,000 Miles

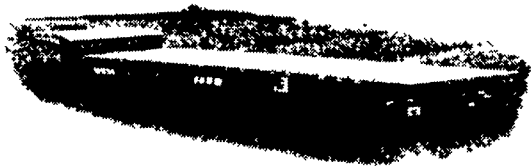


94 TOYOTA SR5
Extend Cab, 4x4, #4512A

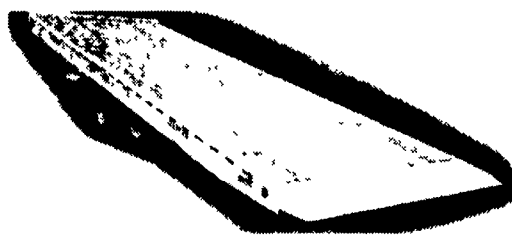
Credit Problems? Call 1-888 CARS 4 You TRUCKS - UTILITY VEHICLES - TRUCKS

NORTH EAST ENTERPRISES

WORLD'S LARGEST STOCKING LANDOLL And TRAIL-EZE DEALER! SALES - SERVICE - PARTS - RENTALS



New 2000 Landoll 660A 48' & 53' Traveling Axle Trailer, Many Different Options In Stock!



2000 Trail-Eze 20 & 25 Ton Heavy Duty Tilt Deck Trailer, Pintle Hitch, Air Brakes, In Stock Now!!



2000 Trail-Eze 10 Ton Ramp Trailer, 24' Deck (19' Flat + 5' Beavertail), Electric Brakes, Pintle Hitch, In Stock!



2000 Trail-Eze 20 Ton Sliding Axle - Tilt Deck Trailer, Pintle Hitch Trailer. 30' Deck, Air Brakes, In Stock!!



New "2000" Landoll 323AG-48 Detachable 35 Ton Air Ride, 28x102" Drop Side with 24" Pull-Out Side Extensions, Self-Contained.



New Fontaine Specialized 35, 50 & 55 Ton Detachable Gooseneck. Many Options Available. Call For Your Best Price.

CALL TOLL FREE 1-877-526-3655

ASK FOR WAYNE BROWN E-MAIL: wayne@neent.com