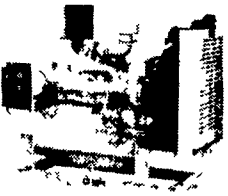


Diesel Engine Service

13 Pleasant Valley Road • Ephrata, PA 17522
PHONE: 717-733-3890 • FAX: 717-738-3146

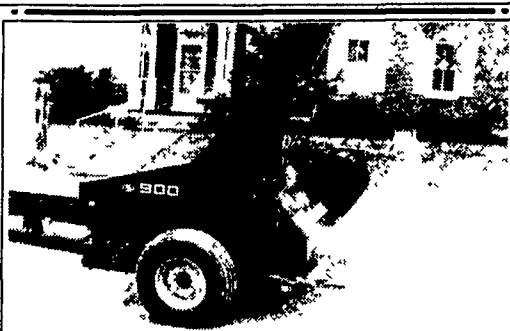
JOHN DEERE & DETROIT DIESEL



- Parts • Service
- Rebuilding
- New PowerTech JD Engines & Powerunits
- Exchange Engines
- Rockford Clutch & Parts • Funk Gear Reductions • Rebuild Kits • Gen Sets

Call Us For Your Power Needs

- 75 HP - 4219D - JD Power Unit, w/Hood. \$5,800
- 80 HP - 4239D - JD Power Unit Rebuilt.. \$5,800
- 115 HP - 4276T - JD Power Unit, Rebuilt.. \$6,200
- 170 HP - 6414T - JD Power Unit, Rebuilt. \$9,500
- 39 KW - 4239D - JD Gen Set 1 or 3 PH.. \$7,200
- 110 KW - 671N - DD Gen Set 1 or 3 PH \$12,500
- 274 KW - Series 60 DD Gen Set 3 PH. Call



CROP PROCESSOR KITS

For New Holland 790, 782, 892 & 900 Forage Harvesters.

For Sale: NH892 Forage Harvester WY Processor & Table

For More Information Call

Isaac H. Nolt Mfg.
337 North Maple Avenue, Leola, PA 17540
(717) 656-2758

FARM EQUIPMENT

- IH 1086, 4 post, 5000 hrs, v.g \$12,900
- IH hydro 100, black stripe, v.g \$9,500
- Badger liquid manure tank, 3300 gal, v.g \$5,500
- IH 4366 \$12,000
- Landoll 20' cutting chisle, \$4,000
- Krause 1927 rock flex disc, \$5,500

717-428-1865

kubotaparts.com

DISCOUNTED PRICES ON KUBOTA PARTS

FREE SHIPPING*

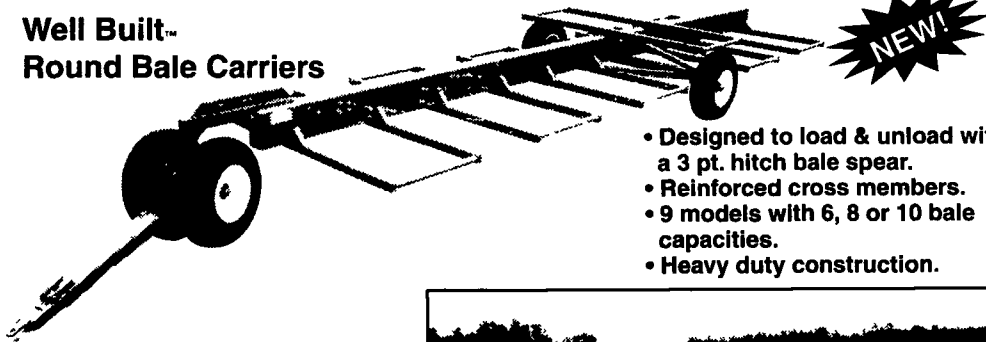
Look Us Up At kubotaparts.com or call toll free at

1-877-4KUBOTA

Well Built™ to Handle Your Hay

Trust Your Most Important Forage Crop to Stoltzfus Mfg.

Well Built- Round Bale Carriers



- Designed to load & unload with a 3 pt. hitch bale spear.
- Reinforced cross members.
- 9 models with 6, 8 or 10 bale capacities.
- Heavy duty construction.

Well Built- Feeders:

- Built tough for long life!
- Available in a variety of lengths.
- Adjustable slant bar or self-locking head locks.
- Ideal for cattle in either feedlots or meadows.

Shown Well Built™ Slant Bar Feeder



Gates • Slant bar Sections • Head locks • Gutter grates

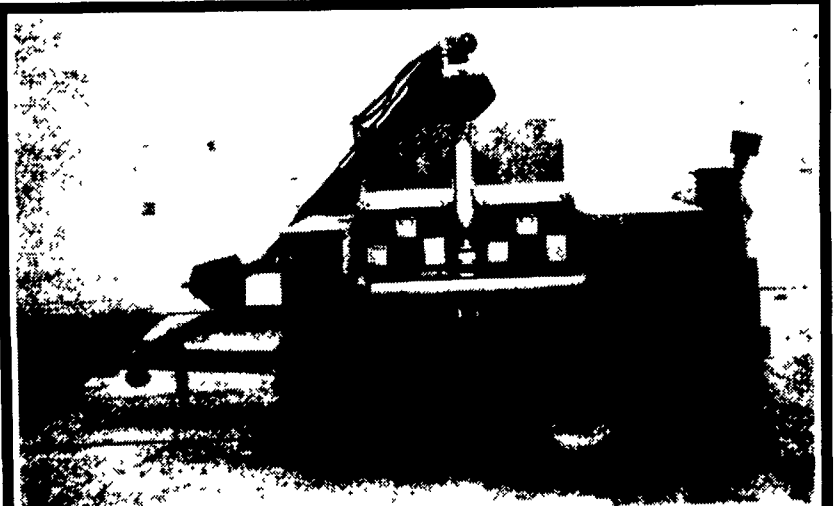
STOLTZFUS MFG

For a free brochure or more information call 610/273-3603

540 White School Rd
Honey Brook, PA 19344
610/273-3603

156 Pompey Hill Rd.
Stoystown, PA 15563
814/893-5086

DEALER INQUIRIES INVITED • CUSTOM WAGONS A SPECIALTY



HIGH CAPACITY GRINDER

Grinds All Types of Grain

- Twin 21" Gehl Hammer Mills
- 1000 RPM Blower
- 12" Hyd. Driven Swinging Auger Feeder

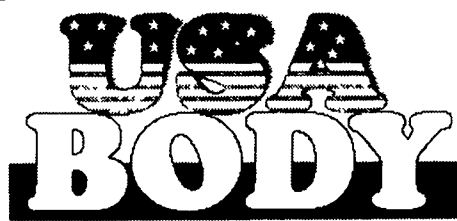
\$25,400

Built by...

Lebanon Valley Implement Co., Inc.

700 E. Linden Street, Richland, PA 17087 717-866-7518

Work-Ready Units and USA ALLStar Ag Truck Bodies In Stock Now!!



Ag Truck & Body Headquarters
Middle Lake Road, DeRuyter, Ny

STOP AND VISIT US AT AG PROGRESS DAYS AUGUST 15-16-17



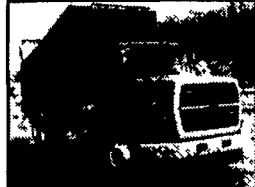
88 Mack 350, 9 Spd., Glider Kit with 2060 ALLStar ag body



88 Freightliner, 350 Cat, Jake, A/C, 9 Spd., w/2260 ALLStar Ag Body (Gorgeous Silver Bullet!)



89 IHC S Series DT466, 7 Spd., with 1860 ALLStar Ag Body



94 Ford LTA 9000 AeroMax, 350 Cat, 9 Spd, A/C, with 2260 ALLStar

Or Mix & Match from our Wide Selection of FUTURE UNITS Bodies, Hoists & Chassis Including...



1-93 International 8100, L10, 280 Cummins 9 spd P/S AC, low miles suitable for 20' 22' ALLStar body



• 87 & 89 R Model Macks 350 Mack, 10 Spd., Engine Brakes, 12 & 38 on Camelback More Arriving Soon!

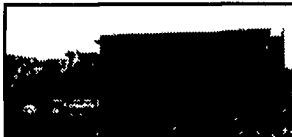
• (2) 93 Fords LTA9000 Aeromax, Cummins recon. Engines, 9 spd., A/C

Introducing USA Body Inc.'s Exclusive, New USA "2 in 1" Ag Roll-off System



Don't Buy 2 Trucks! Save Big \$\$\$ Do It All With One Chassis!

Quickly and easily transform one chassis from the popular, multi-use, all season ALLStar Ag body into a USA Liquid Manure Spreader or Nurse unit or vice versa in just minutes



- The USA "2 in 1" system includes all the features of the industry-leading ALLStar Body plus the performance and durability of the Husky brand liquid manure tank all in one package using 1 truck chassis - a major cost savings to you, the Farmer
- First of its kind to utilize the Omaha Olympic Series Hoist, the leading twin cylinder telescoping hoist, for absolute maximum stability and fast cycle time
- Bonus features include light weight and almost no increase in overall height for ease of loading and a low profile in the fields

See the new "2 in 1" plus much more at Empire Farm Days, August 8, 9 & 10, 2000 at USA Body Inc Booth 912!



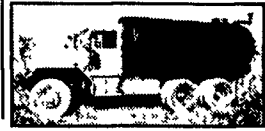
Farmers, Don't Forget

USA Body Inc. Now Handles Complete Line of Manure Handling Equipment And Husky Spreader Parts



USA Body Slide-In Liquid Manure Tank

by Husky will convert your truck and ALLStar Ag Body to a nurse unit or field spreader in just minutes!



All Wheel Drive Army Truck With 3600 Gal Husky Manure Tank, Hercules Diesel (Multi-fuel) 205 HP, 19,000 Miles

Mounting & Installation Dedicated Truck Mount Liquid Manure Tanks by Husky Slide-In Liquid Manure Tanks built to USA Body specs by Husky Truck Mount TMR Feeders Lagoon Pumps by Husky & Dry Hill

Inventory, Photos, Prices & More on our web site at www.usabody.com

Hours:

8-5 Weekdays - Saturday by Appointment
Visit us on the world wide web at www.usabody.com

For Details & Prices Call TOLL FREE 1 (888) 278-2639