

J.L. HOLLINGER & SONS

Construction Equipment Sales

Manheim, PA 17545 After 6 p.m.

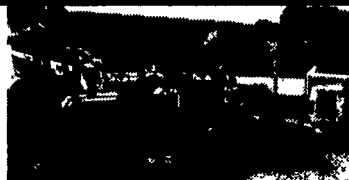
717-664-2444 717-664-2637



'94 CASE 9010 LONG STICK,
V. Good, 3500 Hrs., Clean &
Original - \$39,500



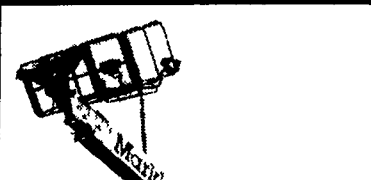
'95 JOHN DEERE 750C
ROPS, 6-Way Blade, OROPS,
4600 Hrs., V. Good - \$69,000



KIOTI 2214
4x4 w/Loader, 3 Pt. PTO
\$7,000



'93 CAT 931C
Series II, OROPS w/Sweeps,
GP Bucket - \$22,500



'87 MARKLIFT
62', 6x4, Gas, Dual Furl.,
Very Good - \$16,500



'87 TEREX 2366
6x6 Deutz Dsl.
\$39,500



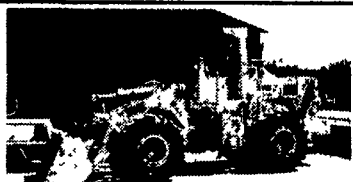
'91 JOHN DEERE 410C
EROPS, 4x4, Ext. Hoe,
V. Good Cond. - \$22,500



'89 FIAT ALLIS FR10B
Cab, GP Bucket,
Good Cond. - \$25,500



'96 CASE 580 SUPER L
4x4, EROPS/Air, Ext. Hoe,
V. Good Cond. - \$34,500



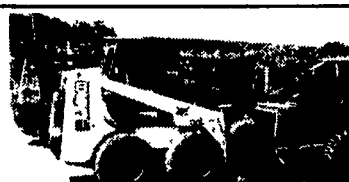
'90 CAT 950 E
EROPS, Air, GP Bucket,
New 23.5x25 Tires - \$50,000



'96 JOHN DEERE 648G
Cab, Air, Winch & Grappler,
New Rubber - \$65,000



'86 JOHN DEERE 550B
6-Way, OROPS, Long Track
\$22,500



'97 BOBCAT 853
800 Hrs., Aux. Hyd.,
Like New - \$10,900



'96 CASE 621B
EROPS/Air, Coupler,
Low Hour - \$49,500



'87 CAT D25C
Haul truck, Good Cond.,
25 Ton - \$47,000



'83 TIMBERJACK 380A
Grappler Skidder, w/Winch,
V. Good Cond. - \$13,750



'97 JOHN DEERE 544H
Cab, G.P. Bucket, 20.5x25 Tires,
Low Hr. Machine - \$85,500



'94 THOMAS T-133
w/Aux. Hydro, 60" Bucket
w/Teeth - \$6,950



'94 CAT 325L
Wide Pads, Long Stick, 42"
Bucket, V. Good - \$74,500



'95 CASE 650G
6-Way, Low Hrs., V. Good
\$37,000



'89 JOHN DEERE 555G
OROPS w/Backhoe Att.
\$32,500



'91 CASE 855D
Loader, OROPS, G.P. Bucket,
V. Good - \$22,500



'88 CAT 963 LGP
EROPS, G.P. Bucket,
Very Good Cond. - \$50,000



'94 CASE 821B
EROPS, G.P. Bucket,
3rd Valve - \$65,000



'93 CAT D3C SERIES II
6-Way OROPS, New Tracks
\$30,000



'85 MACK MH MODEL
w/24' Jerr-Dan
Roll Back Bed - \$25,000



'96 BOBCAT 320
ROPS, Aux. Hyd., Front Blade,
V. Good - \$9,500



'95 TERRAMITE T5C
Gas, Power Steering, ROPS,
Hydrostatic - \$8,900



'97 BOBCAT 773, Aux. Hyd.
G.P. Bucket, Coupler Under
1,000 Hrs., V. Good - \$12,000



'89 MACK R MODEL
w/Jerr-Dan 24' Rollback Bed,
Real Clean - \$28,500



'86 CAT CS553
Dirt Compaction Roller
\$35,500



'89 KOMATSU PC-150LC-3
8'6" Wide, Plumbed w/Hammer Hydros,
Low Hrs., Local Trade - \$39,000



'97 JCB 508-40
8,000 Lb., 40 Ft. Reach
\$42,500



DUO PAC DIRT COMPACTION
ROLLER, 54" Drum, Diesel
\$10,500



'87 CAT 953 LGP
G.P. Bucket, Cab, Low Hrs.,
V. Good Cond. - \$45,500



'85 CAT 953 LGP
Canopy, G.P. Bucket, Cleaned
& Painted - \$36,500



'88 CAT 943
G.P. Bucket, Cab
\$39,500



'92 JOHN DEERE 444E
Cab, G.P. Bucket
\$32,500



ALLIS CHALMERS 7580, Cab,
Air, Duals, 162HP, Air, 3 Hyd.
Outlets, 3 pt. & PTO - \$13,000



'97 JCD 506B
6000 Lb. Cap., 36 ft. Reach,
Rental Return - \$38,500



'87 CASE 585E
Rough Terrain F.L. Mast,
5000 Lbs. Cap. - \$14,500



CASE 4490, Cab, Air, Duals,
Powershift, 3 Remotes,
3 pt. PTO - \$13,000



BECK 3-AXLE
Skid Loader Trl.
\$2,300



BECK TANDEM AXLE
Trl. Skid Loader
\$2,100