

Berks County Tour To Pennwood Farm

The Berks County Holstein Club will be visiting the Stoltzfus family's new 450 cow dairy operation in Somerset County on Saturday, September 2, 2000. The bus will leave Fleetwood Grange at 7 a.m. and will make a second pick-up at the Morgantown McDonalds at the entrance to the Pa. Turnpike at 7:45 a.m. Parking at both locations will be at the rear of the facilities.

The group plans to arrive at Pennwood by noon and will have a picnic lunch, which is included in the ticket price. The afternoon will be spent visiting with the Stoltzfus family and viewing their operation. Return time to Morgantown is expected by 7:30 p.m. A rest stop will be made on the return trip where "fast food" will be available or you can bring a snack.

Cost of the trip will be \$25, and reservations must be made to Dave Bitler at 610-944-0541 or Tim Kurtz at 610-286-6825 by August 25, 2000. Reservations are on a first come, first serve basis.



Careful Selection Breeds Results For Coldsprings Farms

(Continued from Page A40)
at a sale in Virginia in 1957, and one I bought at a herd dispersal in 1957.

"They just stayed around, and their daughters stayed around, and 50 years later

there's a whole bunch of them around," said Hoff.

Today's herd has built up from a sale of 250 head in 1990. Hoff used to host a production sale almost every year to sell about 75 head, but has not since

expansion. About 100 head a year are sold privately.

Coldsprings Farms has been a frequent player in shows, as Hoff enjoys the show ring scene. His cows appear at the district show, the Maryland State Fair, and Maryland's Spring Holstein Show.

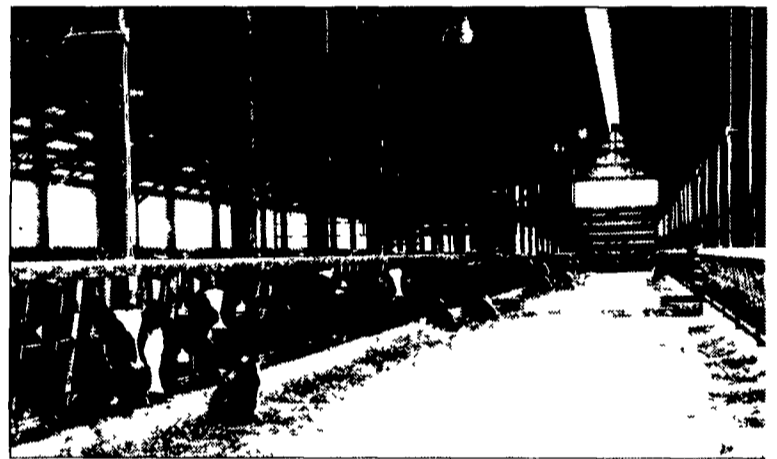
"I show the mature cows and

let the 4-H'ers show the heifers," he said.

Hoff and his wife both enjoy playing golf whenever time allows, plus spending time with two granddaughters. Hoff also sits on the Maryland/Virginia Milk Producer's board and has served eight years on the U.S. Holstein Board.



The addition of a new computer three years ago has helped Hoff keep track of milking details. A transponder located in the cow's collar, right, reads and records what time the milker came off the cow, conductivity levels, her weekly average of milk production, how much she has given per lactation, plus totals for the groups milked in the morning and afternoon shifts. Hoff helps out often with milking. "I like to see the cows and enjoy milking," he said.



A long line of black-and-white faces stretches the length of the farm's newest, freestall barn. The 24-inch gap in the ceiling aids in ventilation. A sloped floor moves rain out of the barn.

Will You Be Short of Quality Forages? Agriculver Has The Seed Products To Help You!

DAIRY BANQUET® FALL BLEND

For Fall & Spring Cutting

- 50% Presto Winter Triticale, 50% Maxum™ Field Peas
- Plant late summer while work load is low and conditions are favorable
- Harvest 2 cuts of high quality forage
 - A fall cut of 20+% protein forage, Another spring cut of 14+% protein forage
- Yields of 2-4 tons of dry matter/acre
- Build needed forage supplies for winter and spring
- Double crop after small grains or run-out hay fields & plant corn or soybeans after spring cutting
- Help utilize manure produced on your farm

Presto Winter Triticale

For Spring Cutting or Grain

- Plant in the fall, decide your use in the spring
- Forage: Harvest 1-1/2 - 3 tons or 14+% protein DM/acre mid to late May
- Grain: Yields up to 20% higher than wheat with better nutritional value (highest yielding grain in 1999 Penn State Trials)
- Straw: High yields of bright, high quality straw
- Tillers heavily
- Double crop by planting right after corn silage harvest, then chop as a forage and plant corn or soybeans back in late May.

Also Available From AgriCulver:

MENDON RED WHEAT

- #1 Yield in 1999 Penn State Trials
- High Straw Yields

McGREGOR WINTER BARLEY

- High Yields
- High tolerance to Barley Yellow Dwarf

Your superior seed supplier for today and beyond.



AgriCulver Seeds

3900 McIntyre Rd., Trumansburg, New York 14886

Phone: 1-800-836-3701 Fax: 607-387-5789

Bred For The Long Haul



Come See The Strong Performers
At Booth 113
Empire Farm Days

Chemgro



Box 218

East Petersburg, Pa. 17520

1-800-346-4769

717-569-3296

Register
To Win Our
\$500 Seed
Giveaway