

Anthony L.

LANDIS

AUTO SALES

3394 Division Hwy., New Holland, PA 17557 (717) 355-0644
Rt 322, 1-1/2 mi west of Blue Ball



88 CHEVY 2500 SILVERADO
2WD, 350, AT, PS, PB, PDL, PW, A/C,
Cass, Tilt, Cruise, 2-Tone, Blue, Very
Well Maintained, 70,000 Mi
\$6,895



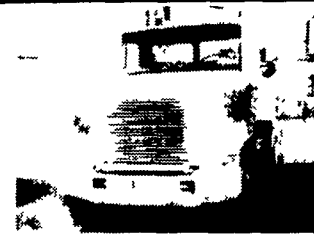
97 DODGE 2500 4X4
360 AT, A/C, 76,000 MI, 8,800 GVW
\$13,900



1988 MACK MIDLINER w/20' Dry Van, 185 Engine, 10 Speed, 33,000 GVW, Stk #1313
\$8,900



1987 GMC CAB & CHASSIS, (24' Frame), 366 Gas, 5 Speed, Low Miles, 23,900 GVW, Very Clean, Stk #1282
\$4,900

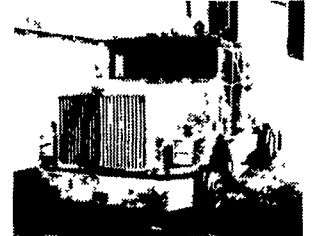


1986 FREIGHTLINER TT Day Cab, 300 Cummins, 9 Speed, SQHD Rears 24/5 Budds, New Paint, Stk #1203
\$8,900



(3) 1993 MACK CH613 DAY CAB TT, EM7-300, 9 Speed, DS402 Eatons on Spring Susp., Very Low Mileage
\$22,900 EA.

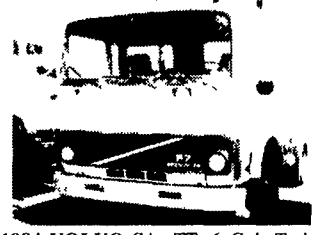
SPECIAL ON MACK E6-250 HP ENGINES! \$2,750



1988 INTERNATIONAL TT, 9300 Series, Cummins BCIV, RTO 14609, SQ100 Rears, 350 HP, 60" Sleeper, Stk #1257
\$9,500



1991 FREIGHTLINER TT DAY CAB, 3406B 350 HP, RTO 14609, 3 7/8 Rockwell Rears on Air Ride, 24 5 Budds Stk #1306
\$13,500



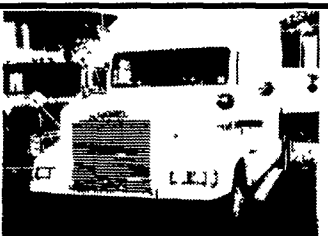
1984 VOLVO SA, TT, 6 Cyl Turbo Diesel, 8 Speed, 20" Spokes, Good Runner, Stk #1200
\$5,900



1985 INTERNATIONAL 9670 EAGLE TT, 400 Cummins w/Jake 9 Speed, Rockwell Rears on Air Ride Stk #1308
\$6,900



1986 CHEVROLET 70 SERIES w/24' Dry Van w/Lift Gate, 8 2 Detroit Diesel, Automatic, 22 5 Radials on Spokes, 30,200 GVW, Stk #1214
\$6,900



1994 FREIGHTLINER FLD120 TT 12 7 Detroit 400 HP w/Jake RTX14609B, Eaton Air Ride 70' Sleeper, Stk #1162
\$22,900



1987 FREIGHTLINER CONV. TT, w/Sleeper, 350 Cummins, RTX12609, SQHP Rears, 3 90 Ratio, Stk #1302
\$9,500

FIRESTONE MOTORS, INC.

330 S. THIRD ST. • LEMOYNE, PA 17043 • (717) 763-7721 • TOLL FREE 1-888-668-6778

VALLEY VIEW TRAILER SALES

Tyler Hill, PA

570-224-6888

570-224-4020

Authorized M.H. Eby Dealer
Aluminum Trailers for

LIVESTOCK • HORSES • CATTLE
TRUCK BODIES

CORNPRO STEEL LIVESTOCK TRAILERS & FLATBED TRAILERS

WE OFFER ALL TYPES OF TRAILER
REPAIR, HOOKUPS AND SERVICE
DEALER FOR NORTHEASTERN
PA, NORTHERN NJ &
SOUTHERN NY

**Eby Maverick
Aluminum
Gooseneck 16x7x7
\$9,800**

BRENNER

PHONE: 717-232-4271

www.brennerdodge.com Fax: 717-233-8221

RON JACKMAN

Business Link Account Manager

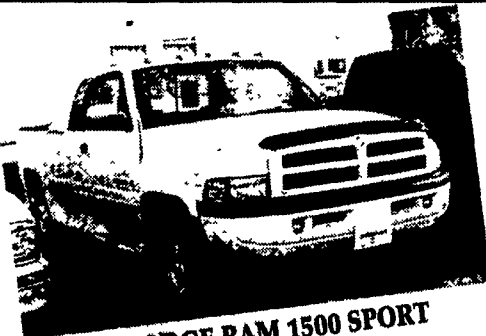
The New Commercial Sales Group

RAY MARINO

Business Link Account Manager

Harrisburg's Only BusinessLink Dealer

"Saving the Small Business
Owner Time, Money & Hassles"



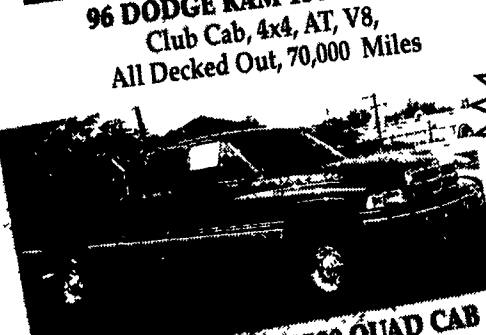
96 DODGE RAM 1500 SPORT Club Cab, 4x4, AT, V8, All Decked Out, 70,000 Miles



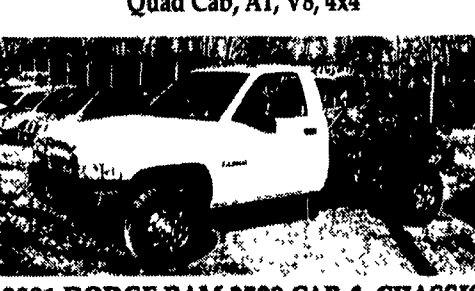
99 DODGE RAM 2500 SPORT Quad Cab, AT, V8, 4x4



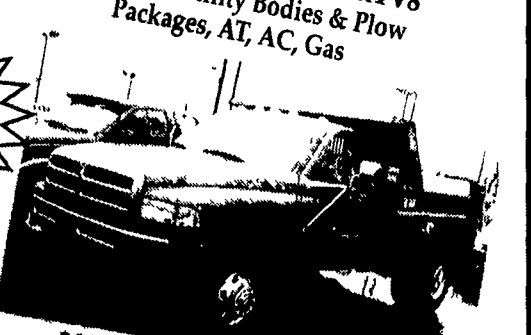
2000 DODGE RAM 3500 4x4 V8 With Stahl Utility Bodies & Plow Packages, AT, AC, Gas



2001 DODGE RAM 2500 QUAD CAB SLT, Cummins Diesel, 4x4, 6 Spd., Most Options



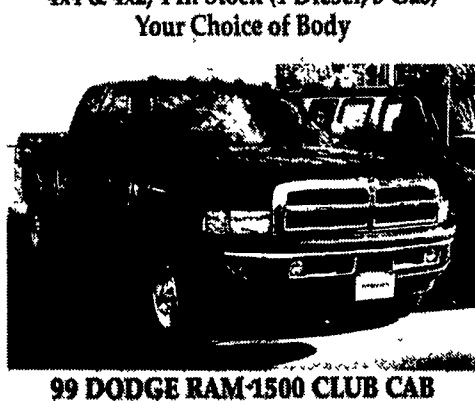
2001 DODGE RAM 3500 CAB & CHASSIS 4x4 & 4x2, 4 In Stock (1 Diesel, 3-Gas) Your Choice of Body



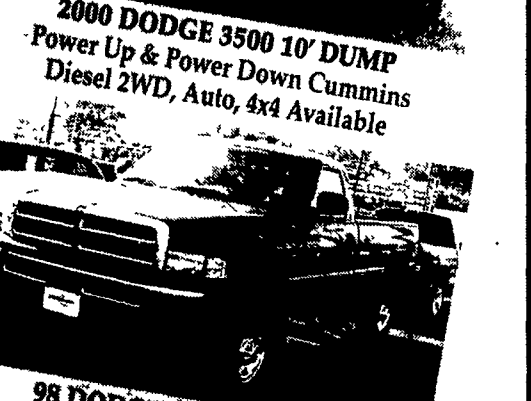
2000 DODGE 3500 10' DUMP Power Up & Power Down Cummins Diesel 2WD, Auto, 4x4 Available



2000 DODGE 3500 4x4 Stahl Grand Challenger Utility Body, AT, A/C



99 DODGE RAM 1500 CLUB CAB 4x4, AT, V8, 37,000 Miles



98 DODGE RAM 2500 SLT 4x4, AT, V8, Most Options

1812-1830 Paxton Street, Harrisburg, PA 17104