



1992 GMC Topkick LoPro, 23,900 lb., GVW, 24 ft. Morgan Box, 366 V8, 4-Spd. Allison, AT, A/C, 140,000 Miles, New Brakes and Tires, Runs Excellent, Looks Good. **\$10,900**

717-361-9296

1994 Chevy 3500 crew cab, (red) auto., excellent running cond. Reading topper w/HD alum ladder racks. \$7,500 717-423-5673

1989 Dodge 350 mason dump truck, auto, P/S, P/B, radio, low miles, w/ Meyers snow plow, new paint. \$7,500. 908-735-5532, dealer.

1980 Ford dump truck, 370 V8, 5-spd trans w/ 2-way, black, all new rubber, set up for hauling blacktop, asking \$4000 OBO. 717/776-0270.

'81 IH S1800 flatbed dump 14'x7', 31,000 GVW, 62,000 mi, 9L IH dsl, auto, air brakes, \$5500. 570-683-5893

'85 Ford F250 pickup truck, 4x4, 351 engine, auto, runs well, 168,000 mi, \$4200. 610-287-7894

CHAPMAN FORD LINCOLN MERCURY NISSAN

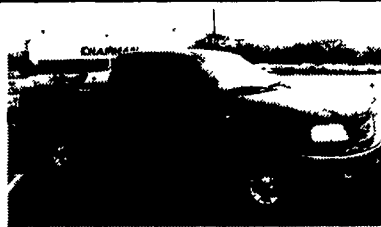
717-272-7671

Parts Dept. Open Daily 8-5
Sat. 8-12 717-273-8168



LEBANON

20th & Cumberland Sts.
Rt. 422 West
9-9 Daily, 9-5 Sat.



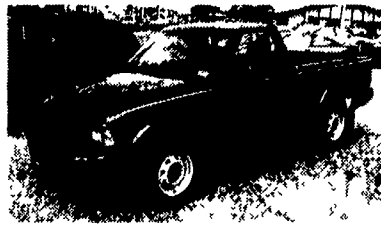
99 FORD F150 4X4
Off Road, Triton V8, Super Cab.
Must See. #PL4488



99 FORD EXPEDITION
Eddie Bauer, Loaded



97 FORD F150 SUPER CAB
Lariat, 5.4L V8, AT, A/C, 2WD, Most Options, 25,000 Miles, Black, #P4474
\$20,998



97 CHEV S-10
4x4, 5-Speed, A/C, #4478A
- Just Arrived -



98 FORD RANGER SUPER CAB
4x4, XLT, AT, A/C, Most Options, Flairside, Low Miles, Sun Roof, Gorgeous Truck, #P4420
Was \$19,188 **NOW \$16,888**



98 FORD EXPLORER XLT
4x4, 4 Door, AT, A/C, V6, Leather



96 FORD RANGER SUPERCAB
STX, 4X4, 4-SPD, W/OD, 6-CYL., A/C, C, T, Cass.



98 FORD WINDSTAR
7-Pass., Low Miles, AT, 6-Cyl, Most Options, Green #645A



95 JEEP GRAND CHEROKEE
6 Cyl., AT, A/C, Most Options, #4747A
\$10,988

Credit Problems? Call 1-888 CARS 4 You
TRUCKS - UTILITY VEHICLES - TRUCKS

Quic'n-Easy
RECEIVER HITCH BY DMI
The Latest In-Tow-Vation!



- Fits under your truck bumper, mounting directly to your truck frame
- Brings the receiver to your load - extends 7" and swings 12"
- Exclusive Proximity Hook-up - one person gets it right the first time
- Spring "Cush'n" takes the push/pull out of towing, lowering stress on the driver and truck drive train
- Tows whatever your truck is rated to tow - exceeds Class IV certification
- Accepts a variety of adapters drawbar, ball, step-up or step-down, pintle hook and weight distribution system

Never Miss a Hitch Again. **DMI**



Weaver Distributing
1-800-Weaver-D
125 Blue Mountain Rd. Fredericksburg, PA 17026

NORTH EAST ENTERPRISES

WORLD'S LARGEST STOCKING
LANDOLL And TRAIL-EZE DEALER!
SALES - SERVICE - PARTS - RENTALS



Stop In & See the New Limited Edition Fontaine Specialized LP50



New 2000 Landoll 660A 48' & 53' Traveling Axle Trailer, Many Different Options In Stock!



2000 Trail-Eze 20 & 25 Ton Heavy Duty Tilt Deck Trailer, Pintle Hitch, Air Brakes, In Stock Now!!



2000 Trail-Eze 10 Ton Ramp Trailer, 24' Deck (19' Flat + 5' Beavertail), Electric Brakes, Pintle Hitch, In Stock!



2000 Trail-Eze 20 Ton Sliding Axle - Tilt Deck Trailer, Pintle Hitch Trailer. 30' Deck, Air Brakes, In Stock!!



New "2000" Landoll 323AG-48 Detachable 35 Ton Air Ride, 28x102" Drop Side with 24" Pull-Out Side Extensions, Self-Contained.



New Fontaine Specialized 35, 50 & 55 Ton Detachable Gooseneck. Many Options Available. Call For Your Best Price.

CALL TOLL FREE 1-877-526-3655

ASK FOR WAYNE BROWN
E-MAIL: wayne@neent.com