

7511 Allentown Blvd.
Harrisburg, PA 17112

**75 TRUCKS
IN STOCK**

**AFFORDABLE
CARS AND TRUCKS, INC.**

"You Gotta Believe!!"

Exit 27, Rt. 81; Rt. 22 East of Harrisburg; 3 Miles North of Hershey

717-652-1925
FAX 717-652-4888
www.affordablecarandtruck.com



**95 Dodge Ram
2500**
Cummins Turbo Diesel, 4x4, SLT Laramie, AT, A/C, Most Options, 111K Miles, Excellent Shape
\$15,495

**89 Ford Ranger
4x4 XLT**
V6, AT, A/C, Only 70K! Sharp! 15 Small 4x4 Pickups Available
\$3,995-\$8,995



88 Chevy Scottsdale 4x4
Ext Cab, Longbed, 350 V8, Auto, A/C, Loaded! 100K
\$8,500



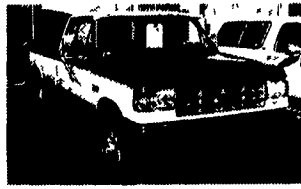
88 FORD F350 4x4
9,000 GVW, 460 V8, AT, Very Clean Truck, Good Miles, Work Vehicle
\$6,995



95 Ford F250 XL 4x4, 8600 GVW, Extra Nice Trucks, Choose From 5-Spd or Automatic, Fully Loaded, Only 78,000 Miles
\$10,995 & Up



94 Chev 1500 Silverado
4x4, Ext Longbed, All Black, 350 + Loaded, Extra Clean, 100K Mi
\$12,995



87 Ford F250 XLT Lariat
4x4, Super Cab, 5 8 Gas, Fully Loaded, AT, A/C, PW T, More, Mint Condition, 100k Mi
\$7,995



93 Chev 2500 H.D.
Silverado, 4x4, 350, AT, 8,600 G VW A/C, Most Options, Mint Cond, 108K Mi
\$10,995



91 Ford F250 XLT Lariat
4x4, 351, AT, AC & Loaded Up, Black & Beautiful, Mint Cond Truck, 100K Mi
\$8,995



95 Chev 1500 Silverado 4x4
Choose from 350 V8, Loaded **\$12,995** or Economical V6, Loaded **\$8,995** Both Super Clean, Low Miles, One Owners!

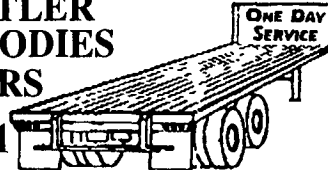


86 Ford F250 XLT
4x4, H D 8600 GVW, 1-Owner, New Jasper 351 V8, AT, 2-Tone Paint, Western Angle Plow, Mint Cond Look
\$7,495

**TRAILER FLOORS INSTALLED
OAK OR APITONG**

**HOSTETLER
TRUCK BODIES
& TRAILERS**

(717) 667-3921



Milroy Exit off Rt. 322
Between Lewistown & State College

'81 A model KW conv flat top, dbl bunk, 400,000 mi on completely new motor. 400 Big Cam 3, 15 over trans, wet line. 1990 Ravens frameless dump, 10' 2 spread on air, 60" sides, trl-12,300 lb. wt. comb. Can legally scale 80,000 lbs, exc cond. Too much to list, must see! \$40,000 comb or willing to separate. 717-687-6162 eve or lv message.

**LEFEVER BROS.
CHEVROLET
CHEVY TRUCKS**



YOUR DIRECT LINE TO GENUINE GM PARTS

(800) 533-3837

When you call the number listed above, you'll reach our wholesale parts specialists, who can help you keep your GM repair work moving quickly.

Ask about

- Specializing in GM Medium Duty Trucks, Current and Obsolete.
- \$500,000 Parts Inventory.
- Parts Locator for Those Hard to Find Items.
- We Ship Anywhere, Local Delivery Available.
- Experienced, Knowledgeable Personnel.

Mon, Tues, Thurs, Fri
7 30 a m - 4 30 p m
Weds 7 30 a m - 8 30 p m

Major Credit Cards Accepted

(717) 432-9697

Quality Dealer Since 1921

406 US Rt 15, Dillsburg PA 17019



**Nothing's better
than an original.**



'96 CHEVY KODIAK
C&C, 3116 Cat, 250 HP, 6 Spd. Trans., A/C, Air Brakes, 184 W.B., 108 C.A., 33,000 GVW, Pintle Hook w/Air Hook-Up, 52,000 Actual Miles **\$26,500**

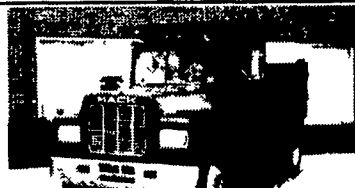
AL HAMILTON USED TRUCK SALES

P.O. Box 157 • 55 Doe Run Road • Manheim, PA 17545

Phone: 717-665-7145 • Fax 717-665-2137

★★ **"CLEANEST
TRUCKS
AROUND"** ★★

**SUMMER SALE
All Prices
Reduced!**



'89 MACK
New 10' Dump, E-6 Mack, 275 HP, 9 Spd. Trans., Fuller 35,000 GVW
\$29,500



'92 FORD LN8000
C&C, 7.8 Ford Diesel, 210 HP, 6 Spd. Trans., Custom Cab, Air Brakes, 234 W.B., 168 C.A., 33,000 GVW **\$18,500**



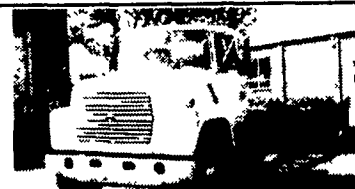
'94 FORD F700
C&C, 429 Gas, 5 Spd. Trans., 14,000 Actual Miles, 207 W.B., 140 C.A., Like New
\$19,500



'86 FORD LN8000
C&C, 3208T, 250 HP, 5 Spd. Trans., 2 Spd. Rear, Custom Int., 33,000 GVW, 222 W.B., 156 C.A., Air Brakes **\$15,500**



'86 FORD LN8000 16'
Flat Dump, 3208 Cat, 210 HP, 5 Spd. Trans., 2 Spd. Rear, 33,000 GVW, Air Brakes
\$19,500



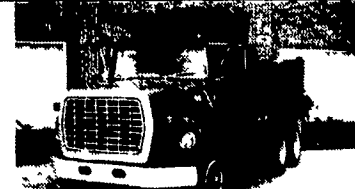
'95 FORD LN8000
C&C, 8.3 Cummins, 210 HP, 6 Sp. Trans., Custom Int., Air Brakes, A/C, 260 W.B., 192 C.A., 35,000 GVW **\$23,500**



'93 INT. 4900
w/18' Morgan Box & Lift Gate, 8' High, 102" Wide, DT-466, 5-Spd. Trans., 35,000 GVW, A/C, Air Brakes **\$19,500**



'93 INT 4900
C&C, DT 466, 6 Spd. Trans., Custom Int., A/C, 32,000 GVW, 254 W.B., 186 C.A.
\$19,500



'78 FORD LTS 9000
15' Dump, 6-71 Detroit, 4x4 Trans, 60,000 GVW, Nice Older Truck
\$12,500



'85 INT. 1700 16' FLAT DUMP
9L Engine, 5 Spd. Trans., Hyd. Brakes, 25,000 GVW
\$14,500



'94 INT. 4700 C & C
DT408, 5 Spd. Trans, Hyd. Brakes, A/C, 254 W.B., 186 C.A., 25,500 GVW
\$21,500



'89 FORD LN8000
New 10' Dump, 7.8L Engine, 240HP, 6-Spd. Trans., 33,000 GVW
\$21,500



'98 EAGER BEAVER
10 HA-PT, 22' Deck, 6' Ramps, 102 Wide, Air Brakes, 25,000 GVW, Brand New
\$9,500



**(3) 24' VAN BODIES
\$2,500 Each**



**22' FLAT BED
w/Racks & Lift Gate
\$2,500**