

Wanted: Preferably 53x102 drop deck trailer, spread on air. 717/933-1341.

Mack tractor 1994, CH613, 427hp, 10sp Fuller, 60" walk-in sleeper, 11-24-5 rubber 80%, 3-way wet line, \$25,000; Walking floor trailer, Trailmobile, 42'x13.2x96, used for mulch, \$16,500. 717-768-8647.

1980 Peterbilt 359 Daycab, 400 Cummins w/lake brake, 15 sp. wetline, aluminum wheels, 1973 Gilmore aluminum dump trailer, 28' roll tarp, coal chute \$18,500. (610)286-6356.



Utility Topper for Chevy S10 Pickup Longbed, Fits 1994 On
M.M. Weaver & Sons 717-656-2321

- 1971 International 10 Wheeler Truck M Series 238 Detroit-15 Speed Road Ranger. . \$3,500
 - 1965 R Model 10 Wheeler Truck, Alumn Body 237 Engine 15 Speed Transmission . . . \$6,000
 - 1975 U Model 10 Wheeler Truck 237 9 Speed Transmission \$6,000
 - 1976 International Gas Truck Plow & Spreader Hopper Type 549 Engine 2 Speed Rear. . . . \$750
 - (2) Cat 966 B Rubber Tire Front End Loader w/Cab each \$12,000
 - 1960 Mack Truck V8 Cummings Engine, Long Frame w/Storage Box Mounted On Back.. \$2,000
 - 35' Storage Trailer w/Side Door. . . \$350
 - 600 Gallon Grader Auto Transmission Cummings Diesel, Needs Head Gasket Has New Tires . \$4,000
 - 18' Steel Dump Body, Needs Floor \$300
 - Cushman 3 Wheel Scooter 2 Cyl 3 Speed High Low Range w/Power Take Off..... \$1,000
- 610-869-8971**

CASH FOR USED DIESEL TRUCKS!

WE NEED 1/2 TON TO ONE TON:

- FORD DIESELS
- DUALIES
- SUPERCABS
- DUMPS
- CREW CABS
- UTILITY BODY
- DODGE CUMMINS
- FLAT BEDS
- 2WD OR 4X4
- CAB & CHASSIS
- SUPER DUTIES

LOW MILEAGE ONLY PLEASE

Before you sell or trade your diesel in somewhere else for **LESS**.
CALL US!
We Pay More for Used Diesel Trucks Than Anyone.
800-363-2767 TRY US!
OR
610-678-3243
Ask for Smokey or Kay

KELLER BROS.
RD 7, Box 405
Lebanon, PA
17042

Specializing In Late Model Vans



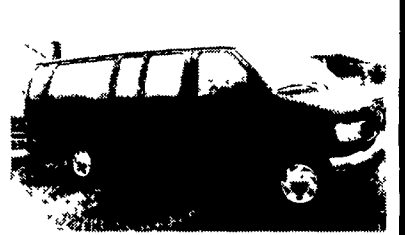
98 FORD WINDSTAR GL
7 Passenger 3.8 V6, Dual A/C & Heat, Privacy Glass, Tilt, Cruise, PW, PL Keyless, Cassette, Quad Captains, Black, 32K Mi. #3485



98 Chevy Astro LT, 7 Passenger,
4.3 V6, Dual A/C & Heat, Privacy Glass, Tilt, Cruise, PW, PL, Pseat, Cassette, CD, Green & Silver, 10K Mi. #3496



99 CHEVY G3500 EXTENDED EXPRESS LS, 15 Passenger, 5.7 V8, Dual A/C & Heat, Privacy Glass, Tilt, Cruise, PW, PL, P Mirrors, Cassette, Blue, 35K Mi., #3475



96 FORD E-350 SUPER CLUB WAGON XLT, 15 Passenger, 5.8 EFI V8, Dual A/C & Heat, Privacy Glass, Tilt, Cruise, PW, PL, P Mirrors, Cassette, Black, 52K Mi., #3479



99 DODGE B3500 MAXI RAM WAGON, 15 Passenger, 5.4 Magnum V8, Dual A/C & Heat, Privacy Glass, Tilt, Cruise, PW, PL, Keyless, P Mirrors, Cassette, Rear Step Bumper, Burgundy, 30K Mi., #3481

30/40 Four Way Auto Sales

770 W Main New Holland, PA 17557

(717) 354-3199
1-877-999-VANS (8267)

Great Selection!



Arrived Too Late For Picture

98 Hino Diesel, 25,950 GVW, 6 Speed, 24 Ft Van Body, Under 20,000 Miles
Call Keith for Details

1996 INTERNATIONAL 4700, DT466, 175 HP, 5 Spd., 25,500 GVW, 24 Ft Van Body 5 Spd or AT. **LOW MILES.**



2000 ISUZU FTR, 200 HP Diesel 6 Spd., 25950 GVW Lots of Options, Set up for 24 Ft Body or Will Change Wheelbase



New 1999 Isuzu NPR; 16 500 GVW, 175 HP, Auto Air, Stereo **BLOWOUT PRICE** Call Keith



1990 FORD LN 7000, 6.6L 185 HP Diesel 6-Spd, 30,000 GVW, 16' Stake Body, 257,000 Miles



ISUZU 2000 NPR, Gas, 14,050 GVW, 250 HP, V8 Engine, Auto Trans., A/C, AM/FM Cass., 14' Van Body **GREAT PRICE OR LEASE!**

LOTS OF OTHER ISUZUS IN STOCK

WE DELIVER ANYWHERE!!!

FIVE STAR ISUZU ★★★★★
New Toll Free - 1-877-54-ISUZU Keith Eshelman (47898)

CHEVROLET GEO BUICK Oldsmobile PONTIAC CHEVY TRUCKS

OUTTEN

TOTAL TRANSPORTATION CENTER

2000 CHEV 3500 CAB & CHASSIS
AT, A/C, 15,000 GVW, Stock #33707

1999 CHEVROLET SUBURBAN 2500
4x4, 454 V8, AT, Dual A/C, Most Options, Tow Pkg., 16,000 Miles **\$30,995**

Outten Hamburg Rt. 61, Hamburg PA
1-800-451-2333 • 610-562-2216

THE HONDRU EXPERIENCE

OVER 200 TRUCKS AVAILABLE FROM OUR 4 DEALERSHIPS

E-TOWN CHEVROLET

Oldsmobile Pontiac
Route 230 E-Town • 717-361-7776

86 Chevy C3500 Crew Cab

Dually, V-8, Auto, AC, PW & L

98 Dodge Ram 3500, Quad Cab, SLT, Cummins Diesel
98 Chevy K1500, V8, PW&L, Auto, AC, Addt Tilt, Cruise
97 Chevy Tahoe LT, Auto, AC, Leather
97 Pontiac Grand Am GT Coupe, 5 Speed
97 Dodge Dakota Sport Club Cab 4x4, V-8, 5 Speed, AC, PW&L, T&C
97 Ford Mustang GT, 5 Speed, PW&L, T&C, AM-FM, Cassette, Stereo
95 Ford F250 4x4 Super Cab, V-8, Auto, AC
95 Chevy K1500 Ext. Cab, V-8, Auto, Equipped

PHILLIPS FORD

Route 72 Manheim • 717-665-3551

2000 FORD F250 SUPER DUTY CREW CAB

10 To Choose From

4x4, Diesel, PS, PB, Auto

00 Ford F150 Super Cab, 4x4 #OPO36A
98 Dodge 2500 Diesel Super Cab #1FO31A
98 Ford E150 Pass Van #OPO58A
98 Ford Club Wagon XLT #OPO58A
97-99 Ford Ranger Super Cab 4x4 4 To Choose From
96 Chevy K3500 Crew Cab, Dually #1FO46A
96 Ford Bronco, V8 2 to Choose From
95 Ford F150 XL, 4x4, V-8 #1O103A

E-TOWN DODGE

Route 230 E-Town • 717-367-6644

97 Dodge Sport

V-8, Auto, AC, PW&L, Tilt & Cruise, AM-FM

91 Chevy C3500 Crew Cab

w/Utility Box, V-8, Auto

MANHEIM CHRYSLER PLYMOUTH GMC

Route 72 Manheim • 717-665-2473

99 GMC Safari SLE

AWD, V-6, Auto, Front & Rear A/C, PW&L, Tilt & Cruise, CD

2000 CHEVY EXPRESS C2500 Cargo Van

V-8, Auto, PS, PB, AC, A Work Horse!

1950 Ford Pick-Up

Runs Good, Looks Great "Redone"

All prices Include Rebates, Exclude Tax, Tag and \$40 Dock Fee

LOADS OF USED PICKUPS CALL ANY STORE FOR DETAILS

Email - hondruauto@aol.com

OVER 20 CHASSIS IMMEDIATELY AVAILABLE FOR BODY INSTALLATION AT OUR LOCAL BODY COMPANIES!