

35

TRUCKS AND TRAILERS

'79 Ford F-700 rollback w/winch, \$3800. 717-534-1253

1985 Ford LN8000 C&C, 33,000 lbs., 230,181 mile, 10 spd., 225 turbo Cat., \$12,900 OBO. 717-484-4302 Stan or 717-940-9775.

1999 F150 4x4, V6, 5spd., air, tow pack, 36,000 mi., \$18,200 (570)674-2675.

WANT 3 axle lime pup trailer. Must be in operating cond. Call & leave message, 301-898-5855.

Peterbilt 1979, conventional, day cab, 3406 Cat, 9 spd, Pete air leaf, alum wheels, \$6,750 OBO. 410-239-7989.

Grain truck, '79 White, 10 wheeler, 6V92, Detroit eng, w/jake brake, complete rebuilt eng, new radiator, 23' bed w/5' sides, roll tarp. 717-862-3970.

1985 Autocar, Tri-Axle Dump, 17 1/2' Alum Bed w/Heat. 20 Front Axle, 46 Rear, 300 Cummins, Jake Brake, 8LL Trans, New Tires, Used Everyday. \$23,500. 717-359-7022

18,000 lb triaxle goose-neck trailer, 16', exc cond, \$4,300. 717-768-8842.

'92 Ford F350 4x4, 5 spd, 351, XLT, 35x12.50 tires, 107,000 mi, \$9,000. 717-762-2274.

1987 Volvo White tractor, single axle or with tag axle, conventional, 320 Detroit, good cond. \$4800. 717-776-7725

MACK PARTS FOR SALE: Engines, blocks, heads & cranks, cabs, hoods & doors, trans, rears. ALL MACK PARTS. REASONABLE PRICES. MACK TRUCKS BOUGHT (complete or parts). 1-888-625-6485

1994 Chevy Cheyenne, 2500, Long Bed, V8 Reef Hitch, A/C, P/S, P/B, Exc Cond. \$7800 856-769-3183

88 Frtln tractor, big bunk, lots of S.steel, 95 Talbot S.deck trallor 48x102 spread. 570-374-1608.

1993 Ford F250 Super cab XLT, 8' bed, 351, AC, 5-spd, 113,000 mi, 4WD, hitch receiver, tool box, \$9995. 717/442-3020.

18' Truck Body w/ Thermo King Unit. 3 Truck Bodies 2 Reefer Units for Trailers. 7174429622

'97 F350, 4x4, power stroke diesel, auto w/air, 60,000 mi, ex cond, includes 8 1/2' snowplow w/ 110 gal. dsl fuel tank & Diamond plate toolbox, inspected, \$22,700. 410-876-2143

1962 Mack Thermodyne dsl 6-wheeler w/18' Midwest grain body & twin cyl. Harsh hoist, all good condition, \$5000. 302/398-8754.

1973 F-600 Ford Dump Truck, Runs Good. \$1100 717-483-6554

1997 Green Chevy Tahoe, Grey Leather Interior, CD/Cass, Tow Pkg, Fully Loaded, 4WD, 4Dr 50K Mi., \$19,900/obo 610-269-7900.

1995 Dodge Dakota ext-cab, lo mi. 1996 Ford F-350, 1988 Ford super duty. 1991 Ford XLT 4WD. 570-473-9554.

95 Dodge Ram, 1-ton dually, Cummins dsl, 4x4 pickup, bed dumps, auto., AC, very nice cond., 260,000 mi, \$16,500 OBO. 215-536-9239.

STOCK GOOSENECK 16x6x6', STOCK BUMPER 16x6x6' 3 HORSE SLANT OPEN STOCK w/ dressing rm & rear tack. Used 2 horse 1986, call for pricing. New & Used trailers available. NETCO Trailer Sales, 410-838-1282.

93 GMC Topkick, 30K GVW, air brakes, AC, 18' steel dump bed. 95 Chevy truck, 3500HD 6.5 dsl. w/ 16' Danco rollback body, 36k miles. 302-834-6922.

'83 Chevy w/14' Eby cattle body, \$5000 obo. Motor needs work. 301-898-5244



1997 Ford F350 w/Hillsboro 24' Trailer

7 3 Diesel Engine, Automatic Transmission

Complete Package \$22,900⁰⁰ Or Best Offer

717-354-2150 Days
717-445-0576 Evenings



1988 PETERBILT 378

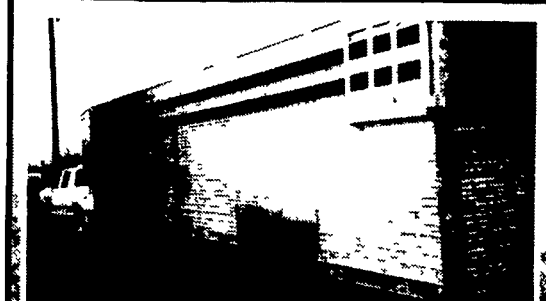
3406E Cat Engine, 12,000 lb. Front Axle, 40,000 lb. Rear Axle, Fuller 10 Sp Trans., (1988 - 9 Sp.), 295x75R 22.5 Tires

NED BARD & SON, INC.

120 S. Maple Ave., Leola, PA 17540

Call Howard Hall

717-656-2931 or Home 717-786-2391



97 EBY DRAFT HORSE TRAILER

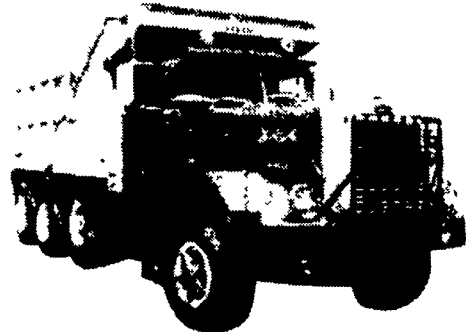
42 x 8-1/2 x 8, Set Up For Horses, Harness, Wagon, Cart Less Than 5,000 Mile, Excellent Shape

\$20,500 OBO (new \$28,000)

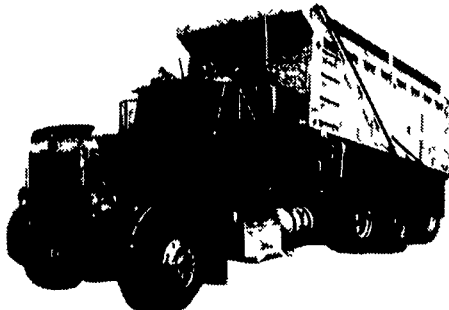
(410) 984-3965

Westminster, MD

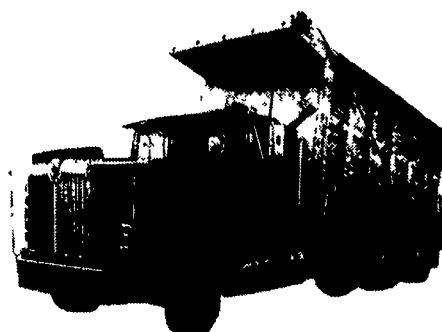
CONSTRUCTION TRUCKS READY TO GO TO WORK!



1980 Autocar TriAxle Dump Truck, 15 1/2' Alum. Dump Body, Hoist, Lift Axle, Cummins NTC 300 w/Jake, 8LL Trans, 20& 44 Axles, Hendrickson Suspension, 496,000 Miles, A Good Old Work Horse Stock #091979 **\$19,500**



1995 Peterbilt 379 Tri Axle 17-1/2' Dump, 365 HP Cat, 8LL Trans; Alu. Wheels, Light Wt. 24,200#, Clean Local Truck **\$69,500**



1990 International Tri-Axle 16' Dump, Alu. Body w/Air Gate, 3406 Cat, 350 HP; 8LL Trans, 16# & 46# Axles; Recent Engine Overhaul w/Paper, 654,000 Miles, Stock #034720 **\$39,500**

HUNTER KEYSTONE PETERBILT

1467 Manheim Pike • Lancaster, PA 17604

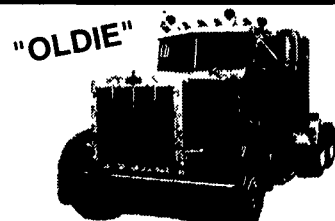
717 299-6630 • 800 243-2458



REMEMBER: EVERYONE DRIVES A USED TRUCK!



1993 Ford F250 Super cab XLT, 8' bed, 351, AC, 5-spd, 113,000 mi, 4WD, hitch receiver, tool box, \$9995. 717/442-3020.



1981 Pete 359, Cat 3406, New Rubber and Alum Wheels, Lots of Work Done Collectors Dream **Blowout \$10,500.**



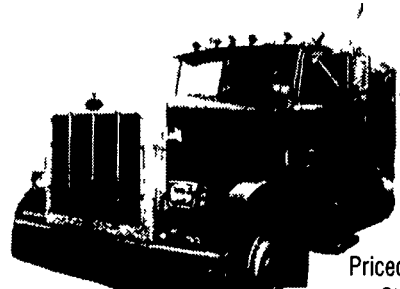
1993 Peterbilt 379, Ext Hood, 3406 Cat, 425HP, w/Jake Brake, 9 Speed, 250" WB, 63" Low Roof Sleeper w/Turbo Wing, Air Trac Susps, Alu Budds Wheels, Stock #337469 Was **\$28,500**, Reduced to **\$25,500**

LARGE FLEET TRADE AVAILABLE

15 1995 Peterbilt 378 Sleeper Cab, Cat Eng.

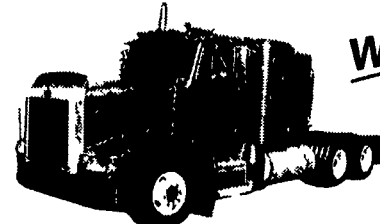
5 1997 Peterbilt 378 Sleeper Cab, Cat Eng.

CALL FOR DETAILS



1988 Peterbilt 379, Ext Hood, 3406 Cat, 425 HP, w/Jake, 15 Speed, 63" Flattop Sleeper, Alu. Wheels, Air Leaf Susp, Priced For Quick Sale Stock #255709 **\$11,900 As Is!!**

OVER 40 CLEAN USED TRUCKS IN STOCK
Vans, Dumps, Chassis, Day Cabs, and Sleepers
Call One Of Our Experienced Salesmen:
Herv Ahlborn **Brant Hamby**
Dave Auker **Ken Kametz**
Nip Brown **Ed Muldoon**
Brian Fulmer **Jeff Sider**
Jim McElroy (Used Truck Manager)

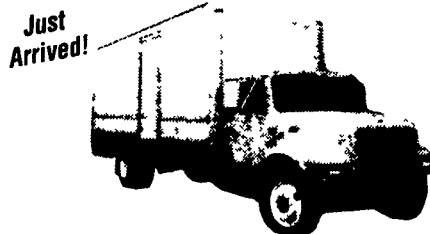


WOW

1988 PETERBILT 377, Sleeper **WITH WETLINE**, 3406 Cat 350 HP, 9 Spd., Air Ride, 4.33 Ratio, Clean and Sound. Stock #257572 ~~\$40,500~~ **Reduced To \$35,500** **Reduced To \$13,500**



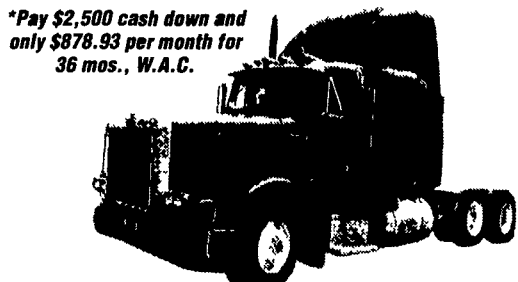
1993 PETERBILT MODEL 377, Detroit Diesel 60 425 HP, w/Jake Brake, 10 Speed, Peter Air Leaf, New Steer Tires, 8 new Caps on Rear, Bright Red, Clean Local Trade (Stock #332455) **\$28,500.**



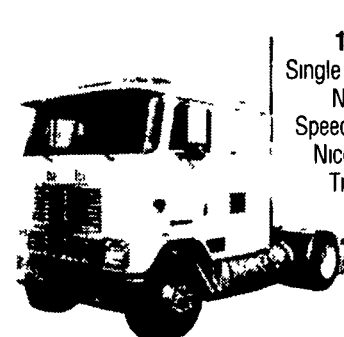
1996 INTERNATIONAL 4900 Non-CDL 25,500 GVW With 24' Van Body, DT466, 195 HP, 6 Speed Trans., Air Brakes, PS & AC, 148,000 1-Owner Miles, Truck Like New, Stock #403809 **\$24,750**



1990 Peterbilt 379, Det S60 12.7L, 425 HP Eng, 60" Flat Sleeper, Jake Brake, 12# & 40# Eaton Axle, Peterbilt Susp., Alu. Wheels, Fuller 13 Speed O D Trans., Stock #294909 **Quick Sale @ \$14,900**



1995 PETERBILT 378, 3406 Cat 380 HP w/Jake Brake, 10 Speed, PS, AC, Air Ride, Good Rubber, Fresh Blue Paint, 600,000 Miles, Stock #360212 **\$27,500**



1993 Int'l CD9670, Single Axle Tractor (N A P) N14 Cummins 350, 9 Speed, PS, A/C, Air Ride, Nice Paint and 11R22.5 Tires, Clean, Straight, Single Axle, 700,000 Mile Truck, Stock #512910 **\$10,500**

N A P.



Will Separate

1998 Int'l 4900 18' Van Non CDL, DT466-195 HP, 6 Speed, PS, AC, Only 144,000 One Owner Miles, Liftgate, None Nicer Anywhere - Won't Last Long, 25,500 Lb GVW Stock #507572 **\$29,900** Will sell Chassis/Cab for **\$27,000**

NO NEED TO HUNT ANYMORE--- COME TO HUNTER'S