

35

TRUCKS AND TRAILERS

'99 Dodge 15 pass., 360 auto, PS, PB, PW, PDL, cruise, tilt, dual air, AM/FM/Cass, 25,000 mi w/bal. of factory warranty, dark green, \$19,900. 717-733-2873

'99 Dodge 2500, 8 pass., 318 auto, PS, PB, PW, PDL, cruise, tilt, dual air, AM/FM Cass., dark green, 19,000 mi. w/bal. of factory warranty, \$18,500. 717-733-2873

'99 Dodge 2500 12 pass. van, 318 auto, PS, PB, PW, PDL, cruise, tilt, dual air, AM-FM cass., privacy glass, 23,000 miles w/ balance of factory warranty, dark green, \$18,900. 717-733-2873

'99 Ford XLT E150 club wagon, 4.6, V8, auto, PS, PB, PW, PDL, cruise, tilt, dual air, AM/FM/Cass., 13,000 mi. w/bal. of factory warranty, dark blue, \$19,500. 717-733-2873

'99 Dodge 2500, 12 pass., 318 auto, PS, PB, PW, PDL, cruise, tilt, dual air, AM/FM/Cass, burgandy, 55,000 miles, excellent condition, \$12,500. 717-733-2873

'96 Dodge 2500 Mark III Conversion, 318 auto, PS, PB, PW, PDL, cruise, tilt, air, AM/FM/Cass, burgandy, 55,000 miles, excellent condition, \$12,500. 717-733-2873

'92 Oldsmobile Silhouette 7 pass., V6 auto, PS, PB, PW, PDL, cruise, tilt, air, new radials, latest inspection, \$3,675. 717-733-2873

'91 Isuzu Trooper II, 4x4, 4 cylinder, 5 spd, PS, PB, air, AM-FM cass., Michelin radials, 59,000 original miles, excellent condition, \$5,900. 717-733-2873

'92 Dodge Dakota LE, long bed, 4x4, 3.9 Magnum, V6, 5 spd, PS, PB, AM-FM cass., Michelin radials, one owner, ex. cond., \$6,700. 717-733-2873

'91 Chevy Winnebago conversion van, 350 auto, PS, PB, PW, PDL, cruise, tilt, air, blue & silver, 76,000 miles, excellent condition, \$7,900. 717-733-2873

'93 Dodge LE 150 4x4, 3.9 V6 Magnum, auto, PS, PB, PW, PDL, cruise, tilt, air, AM-FM cass., 20,000 original miles, excellent condition, \$8,975. 717-733-2873

1985 White daycab Detroit 6V92, 9 speed, wet line Jake brake, PS well maintained. \$7,500 (570)384-0360.

1994 Freightliner 350hp Cat, 10spd RR, air suspension, 60" sleeper, \$11,000. 717-597-5623.

Mack parts! 44's cut off, 417 ratio, Budds, bronze, 6 spd., airshift trans., 18 front axle, RW model. 215-766-0636.

81 GMC Tandem dump truck, 16' steel body, 3406 engine, 18 front axle, 44 rears, good condition. \$10,000 OBO 215-766-0636.

1985 Freightliner conventional 3406 Cat, 15spd, 60" sleeper, long wheel base would make good cab & chassis for 20' dump. 717-597-5623.

1990 Dodge TK 0250 360 4 spd., extra nice, \$4,500 Lamar's A / S 717-665-2617.

(2) box trucks: 1971 Ford F350, 12' box, 360, good tires, rebuilt 4-spd, new exhaust, water pump, etc, MD inspected, \$6500; 1979 Ford LN7000, 20' box, Cat dsl, 5+2, good cond., \$5500. 410-357-4073 after 8pm or iv msg.

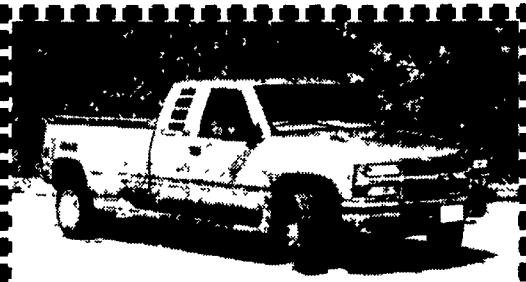
85 Mack R E6, 350, 10 spd., T5 Budd wheels, remanufacture engine. 610-562-7801 \$8,500 OBO. Leave message.

'72 GMC 4x4 tow truck, Weldbilt body, new eng, 4 spd trans, late model diff, PS, tilt wheel, dual batteries, \$4500 obo. 215-598-3768 Bucks Co



BRAND NEW WASH TRAILER
Jenny 3040 Steam Cleaner, 325 Gal. Poly Tank, 100' Pressure Hose w/Wand on Spring Loaded Retractable Reel, Tool Box - \$8,499

Central Hydraulics, Martinsburg, PA
Steam Jenny Distributor
814-224-2535



1999 Chevy, 1 Ton, 4x4 Dually, LS, Custom Conversion Package, Loaded, Low Mileage, 6.5 Turbo, Diesel AT \$34,500 OBO

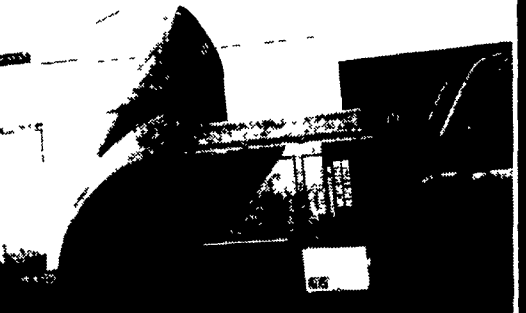
717-556-0673 Ext 24



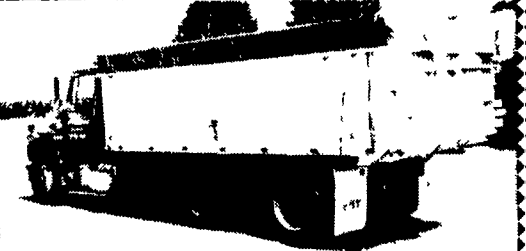
1987 Ford F600, Roll Back, Under CDL, 6 Cyl. Diesel, 5 Spd., 2 Spd. Rear, 20 Ft. Jordan Rollbed, Steel, New Paint, Inspected, Exc Cond. **\$14,500 Or OBO**
717-949-3451 717-629-7463



'90 Chev Kodiak
LoPro, 3116 Cat Diesel, 20,900 GVW - 5 Spd., Nice **\$12,900**
717-733-7408



1990 CH MACK
42" ABEL Sleeper, High-Rise, A/C Heat, Has All Farrings & Hardware, Exc. Cond. \$1,200/Neg.
717-355-2236

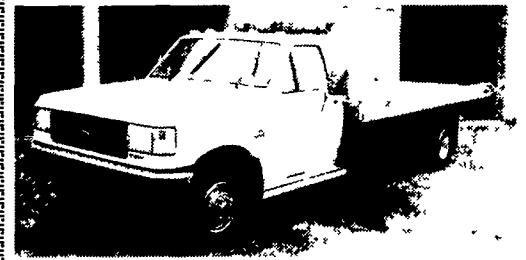


1980 Ford Eby Dump
With 3 Way Tailgate
\$21,900
717-355-0853

Freightliner PTO & Wetline



1989 Freightliner - 350 Cummins - Fuller 14708LL 10 Spd., 38,000 Rears, 12,000 F.A. -212" W.B. Air Ride Suspension, 775,000 Well Maintained Miles - Maintenance History Available Was \$15,000 **Now \$12,500**
Call Dave **717/733-6556**
Lester R. Summers, Inc., Ephrata, PA



1988 FORD XL F Series
Super Duty Diesel Truck With 17 Ft. Chevron Roll Back 14,500 GVW, 44,000 Original Miles. **Asking \$18,000**
717-393-6530 or 940-1882

USED TRUCKS FOR SALE

- 1997 FORD MAXIVAN, AT, 5 4L V8, 15 Passenger, 21K miles **\$18,900**
- 1996 FORD F250, Ext Cab 4x4, Power Stroke Diesel, 5-Spd, No A/C, Short Bed, Red, 72K Miles **\$17,500**
- 1996 FORD F450, Diesel, 2WD, 5-Spd, 10 Ft Flatbed, 120K Miles **\$15,500**
- 1995 DODGE RAM 2500 4x4, Cummins Diesel, AT, A/C, PW, PL, Black & Beige, 111K Miles **\$15,700**
- 1995 FORD F350 4x4, Diesel, 5 Spd, A/C, 134,000 Miles, Black **\$17,900**
- 1994 FORD F450 SUPER DUTY, 2WD, 12' Box, 5 Spd Diesel, No Air, 68,000 Miles **\$14,500**
(Without Box **\$13,500**)
- 1987 CHEV. C30 DUALY, 8ft Bed Setup for Towing 4 Spd., 2WD, No A/C **\$5,500**

SCHAEFFERSTOWN AUTO & TRUCK SALES
Rt. 501, 1-1/2 miles South of Schaefferstown
717-949-2812

LEED TRUCK CENTER

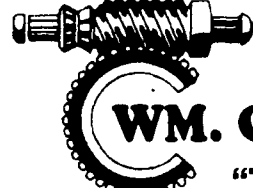
402 South Chiques Rd Salunga Exit, Route 283 **717-898-1200**

1980 IHC, 1854 DT466 Diesel 5&2 Spd, P/S Hyd Brakes 29 GVW 16 Platform Dump Plus Hi Lift Recent Overhaul New Insp

85-87 Ford F700, 370 V8 Gas 5 Spd P/S Hyd Brakes 28 000 GVW 20 22 Platform With Clearfield Conveyors Starting At \$5,500

Chevy/Isuzu 1999 & 1998, W4500 4 cyl Turbo 5 Spd P/S A/C 14 250 GVW Low Miles Very Clean Insp Call for Details

1991 Ford L8000, 7.8 Liter 6 Spd P/S A/B 32 800 GVW 166 CA Reman Eng New Insp Very Clean \$11,900



WM. COHEN & SONS, INC.

"THE TRUCK PARTS STORE"

HEAVY DUTY TRUCK PARTS - NEW & USED - REBUILT REARS & TRANSMISSIONS
(610) 269-1298 Fax (610) 269-0787 www.cohentruckparts.com



11.1-60 series Detroit engines
12.7 60 series Detroit engines
8.2 non-turbo Detroit engines

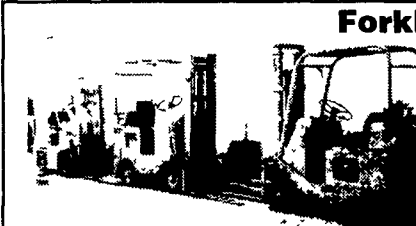


1985 Mack Superliner
V8 Mack 4 Valve Engine, 7 Spd Trans, Mack Rears on Camelback Suspension, 11x24 5 Tires On Aluminum Budds

1994 Isuzu Model NRR
6 Cylinder, Auto, 1400 Aluminum Tank with Pump, 13,250 GVW, 17,438 Miles

Clark Crane, 14 Ton Capacity
4-53 Detroit, 60' boom, 14 00x24 tires, runs good, serial #720

Ingersoll Rand Air Compressor,
Type 30, 15 HP 3 Phase



Forklifts For Sale

- Hyster 2,000 lb capacity, 3 wheeler, propane gas, solid tires, 92" fork height, 48" forks
- Towmotor 4,000 lb capacity, 2 stage mast, 108" fork height, 42" forks, solid tires
- Towmotor 2,000 lb capacity, 106" fork height, 42" forks, solid tires



12' Reefer Body,
under body refrigeration unit, Uses 220 electric Has damage



200 Gal. & 550 Gal. Plastic Tanks For Sale



Michigan Loader Model L30
Quick Coupler, Comes With 1 Yard Bucket and 60" Forks, Runs Excellent



Aluminum Tanker/Trailers
7500 gal. and up



91 Isuzu NPR, 4 cyl. turbo-diesel, auto, 14' reefer body, 110 electric, 195,969 mi

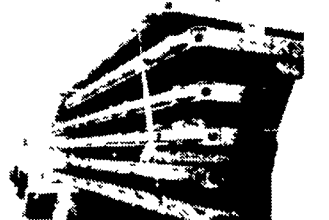
4 I-Beams,
49' Long, 28" High w/12-1/2" Web



(9) 40' - 45' 1970's & Newer Steel Flatbed Trailers (also have drop check trailers) some have sliding tandems, all in good condition. **\$2,500/Ea. and Up**



94 IH Model 4900
DT466 engine, 5 spd, single rear, air brakes, A/C, 32,900 GVW, double frame, 11x22 5 Budds, 254" W.B.



New Flatbeds Available
Sizes currently available are 12', 14', 20', 22' and 24' Racks are also available