

erence One Year Makes!

...s in history, we have something to be thankful for. But will *your* combine cut it?

bine Simply the Best?

At Hooper, Inc we believe it's simple to see why a Case-IH Rotary Axial-Flow Combine is better than all other rotary combines. Because it's simple. A Case-IH Rotary Axial-Flow Combine has only ONE moving part in its entire threshing/separating process - a single large-diameter rotor. Open up the side shield on any other rotary combine and compare it to the drive mechanism, and you will see that the Case-IH rotary combine has fewer moving parts, which means fewer problems. Because the more moving parts there are, the greater your chance of breaking down.

And when it comes to servicing the most productive combine in farming, no dealer understands the Case-IH Rotary Axial-Flow Combine better than Hooper. Hooper introduced the Case-IH Rotary Axial-Flow Combine to the East, and our combine service specialists have been working with Axial-Flow technology since 1977.

To put more quality grain in the tank than with any other harvesting system, go with the rotary combine and dealer that are simply the best. The Case-IH Rotary Axial-Flow Combine and Hooper, Inc.

USED COMBINES UNDER \$10,000

NO.	YEAR	MAKE	DESCRIPTION
A 22870	1976	NH	TR70 3675 Hours, w/960 13 platform & 4R 30" head
A 22836	1979	MF	750 2WD, Rock Trap Chopper
C 18612	1977	IH	715 2WD, 3450 Hours Chopper GLM Weight Frame

\$10,000 - \$20,000

B 18597	1984	IH	1440 2WD 3912 Hours, Spec Rotor, Beater GLM
B 18509	1983	IH	1480 2WD, 3300 Hours, Std Rotor, auto hdr ctrl
B 18618	1980	IH	1460 2WD, 3759 Hours, Diesel, Rotary Air Screen
A 20240	1984	IH	1480 2WD, 3607 Hours, Spec Rotor, FDR Rev
A 22884	1979	JD	6620 2WD, 5000 Hours, Sidehill Chopper, Chaff Sprdr

\$20,000 - \$50,000

B 18800	1984	IH	1460 2WD, Spec Rotor, Chopper, GLM, FDR Rev
C 21934	1982	IH	1420 2WD, 2200 Hours, Std Rotor, auto hdr ctrl, Nice
A 18855	1991	CIH	1660 2WD, 3500 Hours, Spec Rotor, GLM
C 31080	1990	CIH	1680 2WD, 4040 Hours, Field Tracker, Spec Rotor

\$50,000 - \$90,000

B 18545	1989	CIH	1680 4WD, 2368 Hours, Field Tracker, Chopper
B 18454	1993	CIH	1666 4WD, 2722 Hours, Spec Rotor, GLM, Chaff Sprdr
A 22310	1995	CIH	2188 4WD, 1979 Hours, Field Tracker, Spec Rotor
A 23020	1997	CIH	2166 2WD, 904 Hours, Field Tracker, Spec Rotor

\$90,000 +

B 18700	1996	CIH	2188 2WD, 1298 Hours, Spec Rotor, Chopper
B 17357	1997	CIH	2188 4WD, 916 Hours, Spec Rotor, Chopper
A 22970	1998	CIH	2388 2WD, 1029 Hours, Field Tracker, Spec Rotor
A 22990	1997	CIH	2388 2WD 876 Hours, Field Tracker, Spec Rotor
B 19429	1997	CIH	2188 4WD, 600 Hours, Field Tracker, Specialty Rotor
A 23062	1995	CIH	2188 2WD, 1810 Hours, Field Tracker, Spec Rotor

Waiver of Interest on Used Combines Until 9/1/2001
Financing Available On All Used Combines From Hooper

1. Interest Waiver Till 9/1/01 with Balance at Standard Rate for Up to 60 Months Total **OR**
 2. Fixed Low Rate Financing of 4.9% for 36 Months
Fixed Low Rate Financing of 5.9% for 48 Months
Fixed Low Rate Financing of 6.9% for 60 Months
- FINANCING OPTIONS SUBJECT TO CHANGE WITHOUT NOTICE

USED PLANTERS & DRILLS

- C 23011 IH 800 4RN Planter
- B 17790 IH 800 6RN Planter
- C 31352 IH 800 6RN Planter
- B 19754 JD 7000 8R Planter
- B 16778 JD 7240 8R Planter
- B 19387 WH 5100F 8RN Planter
- B 30373 WH 5400 6RN Planter
- C 2813 CIH 5100 18x7 Drill
- A 23119 GP 10' EW NT Drill
- B 16662 GP 15' Drill
- B 40206 GP 15' Drill w/Htch
- B 40132 GP 15 NT Drill
- A 23029 GP 400782 24' Drill
- B 18940 GP 30' Drill
- B 40041 GP 30 NT Drill
- A 23171 IH 510 18x7 Drill
- B 40207 IH 510 Drill
- B 40208 IH 510 Drill
- B 19196 JD 455 30' Drill
- C 22782 JD 8300 21x7 Drill
- A 22883 JD 8350 12' Drill



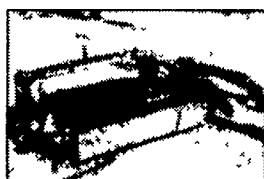
A 23035 1996 NH 415 Mower Conditioner, 11' 4" Cut, Rubber Rolls, 1000 PTO
SALE PRICE \$7,900



B 18906 1991 CIH 8580 Baler, Makes 4x4x8, 60,635 Bales
SALE PRICE \$29,000



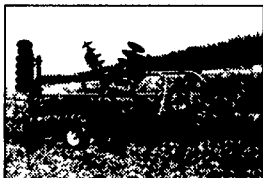
C 31177 IH 435 Baler With Thrower, 14"x18"
WAS \$3,200, IS \$2,900



C 22296 1993 JD 1470 12' Mower Conditioner, Rubber Rolls, End-Pull, 1000 RPM PTO.
WAS \$8,450, IS \$7,500



B 18976 IH 496 34' Folding Disc, 8" Front & Rear Spacing, Duals on Center & Wings, Forrow Fillers, Packer Hitch & Hoses,
WAS \$10,500, IS \$9,900



C 31217 JD 230 21' Disc, 13' Transport, 9" Front & Rear Spacing, Duals on Center, Singles on Wings,
WAS \$3,200, IS \$2,800



A 23178 Krause 4945 NR 25' Rockflex Disc, 13' 6" Transport, 8" Front & Rear Spacing,
Just Traded - Will Rebuild for \$15,900



B 22866 DMI 730 7 Shank EcoLo-Tiger Chisel Plow w/ Lead Shanks, Disc Attachment, Rear Leveler, Excellent Condition,
WAS \$13,900, IS \$12,900

How to the Intercourse Store

- 23199 CIH 1680 4WD Combine
- 23205 CIH 1666 2WD Combine
- 23206 NH 15 Mower Conditioner
- 23193 CIH 1660 Combine
- 23195 KR 4924 Disc
- 23196 KR 2860 Chisel Plow
- 23226 NH 499 Mower Conditioner
- 23231 TW 12' Disc

How to the Middletown Store

- 40139 CI 8545 Baler
- 40186 NH 2000 Baler
- 40179 UM 33' Baskets
- 40188 CI 8610 Bale Processor
- 40206 GP 15' Drill w/Hitch
- 40207 IH 510 Drill
- 40208 IH 510 Drill
- 40231 CI 495 MFD Tractor
- 40232 CI 2260 72" Loader
- 40247 JD 8760-4WD Tractor
- 40292 RI 11' Silver Chisel
- 40296 CIH 5120MFD Tractor
- 40295 NH 791 Mower Spreader
- 40371 Case 3284 Tractor
- 40372 IH 424 Tractor w/loader
- 40384 Ag Chem 3 1/2 Sprayer
- 40385 Tyler XL150 Sprayer

How to the McAtterville Store

- 40296 CIH 5120 2WD Combine
- 40295 NH 6895 Rotary Mower
- 40292 RI 4840 4WD Articulated Cab Tractor
- 40291 NH 160 XT 2WD Cab Tractor
- 40290 NH 800-6RN Planter
- 40289 ID 6300 Drill 21x7
- 40288 CIH 1820-15 Platform
- 40287 NH 628 12' Disc

JUST TRADED

150 + HORSEPOWER

NO.	YR	MAKE	DESCRIPTION	HP
B 18993	1997	CIH	9370 Quadtrac, 1495 Hours, 30" Tracks,	360 HP
A 23031	ST	280 4WD, 23 1 x 34 Duals,	280 HP	
B 19203	1978	Vers	875 Cab, 3901 Hours, 20 8 Rear Tires,	247 HP
B 19590	1996	JD	8400 MFD Cab, 2386 Hours, 18 4 x 46 Duals,	225 HP
B 18836	1995	CIH	7250 MFD Cab, 1740 Hours, 20 8 x 42 Duals,	215 HP
B 19947	1999	CIH	MX 240 MFD Cab, 459 Hours,	205 HP
B 19586	1991	CIH	7140 MFD Cab, 3134 Hours, 18 4 x 46 Duals,	197 HP
B 19585	1991	CIH	7140 MFD Cab, 3388 Hours, 18 4 x 46 Duals,	197 HP
B 19584	1991	CIH	7140 MFD Cab, 3083 Hours, 18 4 x 46 Duals,	197 HP
B 19217	1997	CIH	7240 MFD Cab, 2209 Hours, 20 8 x 42 Duals,	195 HP
A 23070	1984	JD	4850 MFD Cab, 6971 Hours, 20 8 x 42 Duals,	192 HP
A 18853	1999	CIH	MX 220 MFD Cab, 221 Hours,	186 HP
C 23046	1979	Case	2590 2WD Cab, 6636 Hours, 20 8 x 38 Duals,	180 HP
A 23043	1990	CIH	7130 MFD Cab, 7279 Hours, 18 4 R 42 Duals,	172 HP
C 31092	1980	IH	3788 MFD Cab, 6579 Hours, 20 8 x 38 Rear Tires,	170 HP
A 22559	1983	JD	4650 MFD Cab, 5800 Hours, 20 8 x 38 Duals,	165 HP
A 22784	1999	CIH	MX 200 MFD Cab, 513 Hours, 18 4 x 42 Duals,	165 HP
C 19589	1992	JD	4560 2WD Cab, 2280 Hours, 18 4 x 46 Rear Tires,	156 HP
B 19587	1992	JD	4560 2WD Cab, 1806 Hours, 18 4 x 46 Duals,	156 HP
B 17774	1997	CIH	8920 MFD Cab, 2073 Hours, 18 4 x 42 Duals,	155 HP
B 40119	CIH	7220 MFD Cab, 2550 Hours,	155 HP	
A 23004	1988	CIH	7120 2WD Cab, 4883 Hours, 20 8 x 38 Rear Tires,	151 HP
B 19583	1991	CIH	7120 2WD Cab, 2115 Hours, 18 4 x 46 Rear Tires,	151 HP
B 19582	1991	CIH	7120 2WD Cab, 3093 Hours, 18 4 x 46 Rear Tires,	151 HP
B 19581	1991	CIH	7120 MFD Cab, 3119 Hours, 18 4 x 46 Duals,	151 HP

100-150 HORSEPOWER

NO.	YR	MAKE	DESCRIPTION	HP
B 23077	1999	CIH	MX 180 MFD Cab, 46 Hours, 18 4 x 42 Rear Tires,	145 HP
B 40092	IH	1486 2WD,	145 HP	
C 19501	1989	CIH	7110 2WD Cab, 2531 Hours, 18 4 x 38 Duals,	131 HP
A 17811	1979	IH	1086 2WD Cab, 4533 Hours, 20 8 x 38 Rear Tires,	131 HP
C 22860	1976	IH	1086 2WD Cab, 4962 Hours, 20 8 x 38 Rear Tires,	131 HP
A 23190	IH	1086 2WD, 5072 Hours, 18 4 x 38 Rear Tires,	131 HP	
A 22937	1999	CIH	MX 150 MFD Cab, 491 Hours,	130 HP
C 31016	1973	JD	4430 2WD, 5980 Hours, 20 8 x 38 Rear Tires,	125 HP
A 23069	1992	CIH	5250 2WD Cab w/Ldr, 2743 Hours, 18 4R38 Tires,	112 HP
A 23186	1993	CIH	5250 MFD Cab,	112 HP
C 31342	1988	JD	4050 2WD ROPS, 5080 Hours, 18 4 x 38 Rear Tires,	100 HP
A 23138	1995	CIH	5240 MFD Cab, 3877 Hours, 18 4 x 38 Rear Tires,	100 HP

Less Than 100 HORSEPOWER

NO.	YR	MAKE	DESCRIPTION	HP
A 23187	CIH	5140 2WD Cab w/loader,	94 HP	
B 19890	1996	CIH	5230 MFD Cab, 1775 Hours, 18 4 x 34 Duals,	90 HP
C 19554	1977	IH	886 2WD Cab, 4152 Hours, 18 4 x 34 Rear Tires,	90 HP
A 23121	IH	656 Gas, 15 9 x 38 Rear Tires,	62 HP	
A 19381	1969	IH	656H W/Ldr, Diesel, 15 5 x 38 Rear Tires,	66 HP
B 19599	1960	IH	460D,	52 HP
C 19755	1976	IH	464, Gear, 7800 Hours, 14 9 x 28 Rear Tires,	46 HP
B 40048	1999	CIH	C50 MFD ROPS w/Ldr, 222 Hours, 14 9x28 Tires,	40 HP
B 18252	1970	Case	580 CK w/Ldr, Cab, 1274 Hours, 14 9 x 24 Rear Tires	
B 19689	1984	Ford	2110, 2661 Hours	
B 19898	Case	800, Gear, Gas, 15 5 x 38 Rear Tires		

Financing Available On All Used Tractors From Hooper

Special Programs Available for Under 100 HP Tractors

- 1) 4 Month Interest Waiver
- 2) Fixed Low Rate Financing as Low as 7.9% for 36 Months
- 3) Split Rate Financing 5.25% for the First 12 Months
- 4) Lease Options

Special Programs Available for 100+ HP Tractors

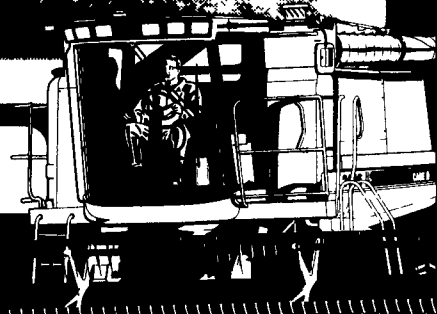
- 1) 4 Month Interest Waiver
- 2) Fixed Low Rate Financing as Low as 6.9% for 36 Months
- 3) Split Rate Financing 4.9% for the First 12 Months
- 4) Lease Options

Call a Hooper Salesman Today For Details
Financing Options Subject to Change Without Notice

RENTAL TRACTORS

HOOPER HAS RENTAL TRACTORS FOR SALE, RENT OR LEASE. SCHEDULE YOUR RENTAL TRACTOR **NOW!**

All New & Used Products Backed By Hooper Parts & Service
VISIT OUR WEBSITE: www.hooper.com



CASE IH