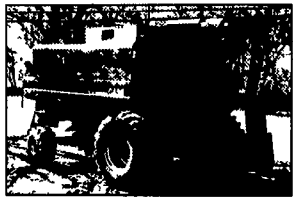


Experience One Year Makes!

Steps in history, we have something to be thankful for. But will *your* combine cut it?



1999 CIH 1680 2WD, 3, Rock Trap, FDR Rev, Drive - 30.5 x 32, Steering - 14.9 x 24



C 31143 1987 CIH 1660 2WD, 3666 Hours, Field Tracker, Standard Rotor, Rock Trap, Tires. Drive - 30.5 x 32, Steering - 18.4 x 16



1994 IH 1440 2WD, 3912 Hours, Field Tracker, Beater, Grain Loss Monitor, Tires. Drive - 30.5 x 32, Steering - 18.4 x 16.1



C 17483 1995 JD 9500 2WD, 2111 Hours, Sidehill, Rock Trap, Grain Loss Monitor, Tires. Drive - 30.5 x 32, Steering - 14.9 x 24

UNDER \$10,000

NO.	YEAR	MAKE	DESCRIPTION
A 22861	1976	MF	750, Grey Cab Fair Paint
A 22870	1976	NH	TR70, 3675 Hours, w/960 13' platform & 4R 30' head
A 22836	1979	MF	750 2WD, Rock Trap, Chopper
C 18812	1977	IH	715 2WD, 3450 Hours Chopper, GLM Weight Frame

\$10,000 - \$20,000

NO.	YEAR	MAKE	DESCRIPTION
A 22639	1978	IH	1460 2WD, 3391 Hours Std Rotor
B 18597	1984	IH	1440 2WD, 3912 Hours, Spec Rotor, Chopper, GLM
B 18509	1983	IH	1480 2WD, 3300 Hours, Std Rotor, auto hdr ctrl
B 18618	1980	IH	1460 2WD, 3759 Hours, Diesel, Rotary Air Screen
A 20240	1984	IH	1480 2WD, 3607 Hours, Spec Rotor, FDR Rev
A 22884	1979	JD	6620 2WD, 5000 Hours, Sidehill, Chopper, Chaff Sprdr

\$20,000 - \$50,000

NO.	YEAR	MAKE	DESCRIPTION
B 18800	1984	IH	1460 2WD, Spec Rotor, Chopper, GLM, FDR Rev
C 21934	1982	IH	1420 2WD, 2200 Hours, Std Rotor, auto hdr ctrl, Nice
A 13011	1986	CIH	1640 2WD, 3105 Hours, Std Rotor, FDR Rev
A 18855	1991	CIH	1660 2WD, 3500 Hours, Spec Rotor, GLM
C 31080	1990	CIH	1680 2WD, 4040 Hours, Field Tracker, Spec Rotor
B 18511	1986	CIH	1680 2WD, 3271 Hours, Field Tracker, Std Rotor

\$50,000 - \$90,000

NO.	YEAR	MAKE	DESCRIPTION
B 18545	1989	CIH	1680 4WD, 2368 Hours, Field Tracker, Chopper
B 18454	1993	CIH	1666 4WD, 2722 Hours, Spec Rotor, GLM, Chaff Sprdr
A 22310	1995	CIH	2188 4WD, 1979 Hours, Field Tracker, Spec Rotor
A 23020	1997	CIH	2166 2WD, 904 Hours, Field Tracker, Spec Rotor
A 22646	1996	CIH	2188 2WD, 1857 Hours, Field Tracker, Spec Rotor
B 19133	1993	CIH	1688 4WD, 2600 Hours, Field Tracker, Spec Rotor

\$90,000 +

NO.	YEAR	MAKE	DESCRIPTION
B 18700	1996	CIH	2188 2WD, 1298 Hours Spec Rotor Chopper
B 17357	1997	CIH	2188 4WD, 916 Hours Spec Rotor Chopper
A 22970	1997	CIH	2388 2WD, 1029 Hours Field Tracker Spec Rotor
A 22990	1997	CIH	2388 2WD, 876 Hours Field Tracker Spec Rotor
B 19429	1997	CIH	2188 4WD, 600 Hours Field Tracker, Specialty Rotor
A 23062	1995	CIH	2188 2WD, 1810 Hours Field Tracker Spec Rotor

Waiver of Interest on Used Combines Until 9/1/2001
Financing Available On All Used Combines From Hooper

THE TIME TO INVEST IN A COMBINE IS NOW

"This is a great opportunity to make a small investment in your future by getting an outstanding combine that will provide years and years of unbeatable service."

Charlie Hooper
Hooper, Inc.



1. Interest Waiver Till 9/1/01 with Balance at Standard Rate for Up to 60 Months Total **OR**

2. Fixed Low Rate Financing of 4.9% for 36 Months

Fixed Low Rate Financing of 5.9% for 48 Months

Fixed Low Rate Financing of 6.9% for 60 Months

FINANCING OPTIONS SUBJECT TO CHANGE WITHOUT NOTICE

USED PLANTERS & DRILLS

- C 23011 IH 800 4RN Planter
- B 17790 IH 800 6RN Planter
- C 31352 IH 800 6RN Planter
- B 19754 JD 7000 8R Planter
- B 16778 JD 7240 8R Planter
- B 19387 WH 5100F 8RN Planter
- B 30373 WH 5400 6RN Planter
- C 22813 CIH 5100 18x7 Drill
- A 23119 GP 10' EW NT Drill
- B 16662 GP 15' Drill
- B 40206 GP 15' Drill w/Hitch
- B 40132 GP 15 NT Drill
- A 23029 GP 400782 24' Drill
- B 18940 GP 30' Drill
- B 40041 GP 30 NT Drill
- A 23171 IH 510 18x7 Drill
- B 40207 IH 510 Drill
- B 40208 IH 510 Drill
- B 19196 JD 455 30' Drill
- C 22782 JD 8300 21x7 Drill
- B 22883 JD 8350 12' Drill



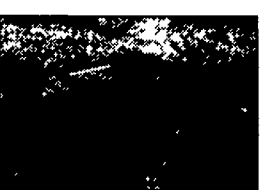
A 23035 1996 NH 415 Mower Conditioner, 11' 4" Cut, Rubber Rolls, 1000 PTO
SALE PRICE \$7,900



B 18906 1991 CIH 8580 Baler, Makes 4x4x8, 60,635 Bales
SALE PRICE \$29,000



C 31177 IH 435 Baler With Thrower, 14"x18"
WAS \$3,200, IS \$2,900



C 22296 1993 JD 1470 12' Mower Conditioner, Rubber Rolls, End-Pull, 1000 RPM PTO,
WAS \$8,450, IS \$7,500



B 18976 IH 496 34' Folding Disc, 8" Front & Rear Spacing, Duals on Center & Wings, Forrow Fillers, Packer Hitch & Hoses,
WAS \$10,500, IS \$9,900



C 31217 JD 230 21' Disc, 13' Transport, 9" Front & Rear Spacing, Duals on Center, Singles on Wings,
WAS \$3,200, IS \$2,800



A 23178 Krause 4945 NR 25' Rockflex Disc, 13' 6" Transport, 8" Front & Rear Spacing,
Just Traded - Will Rebuild for \$15,900



B 22866 DMI 730 7 Shank EcoLo-Tiger Chisel Plow w/ Lead Shanks, Disc Attachment, Rear Leveler, Excellent Condition,
WAS \$13,900, IS \$12,900

JUST TRADED

- Now at the Intercourse Store**
- 1996 CIH 1680 4WD Combine
 - 1989 2WD Combine
 - 15 Mower Conditioner
 - 1680 Combine
 - 4924 Disc
 - 2860 Chisel Plow
 - 400 Mower Conditioner
- Now at the Middletown Store**
- F1480 8 x 18 Plow
 - 8845 Baler
 - 2890 Baler
 - 317 Planter
 - 317 Planter
 - 1970 Sale Processor
 - 15' Drill w/Hitch
 - 15' Drill
 - 15' Drill
 - 408 MFD Tractor
 - 2750 77" Loader
 - 8790 4WD Tractor
 - 11' Silver Chisel
- Now at the Newburg Store**
- 1997 Mower
 - 1997 Personal Cab Tractor
 - 1997 4WD Tractor
 - 1997 Tractor w/2255 Ldr

150 + HORSEPOWER

NO.	YR	MAKE	DESCRIPTION	HP
B 18993	1997	CIH	9370 Quadtrac, 1495 Hours, 30" Tracks,	360 HP
A 23031	ST	280 4WD, 23.1 x 34 Duals,	280 HP	
B 19203	1978	Vers	875 Cab, 3901 Hours, 20 8 Rear Tires,	247 HP
B 19590	1996	JD	8400 MFD Cab, 2386 Hours, 18 4 x 46 Duals,	225 HP
B 18836	1995	CIH	7250 MFD Cab, 1740 Hours, 20 8 x 42 Duals,	215 HP
B 19947	1999	CIH	MX 240 MFD Cab, 459 Hours,	205 HP
B 19586	1991	CIH	7140 MFD Cab, 3134 Hours, 18 4 x 46 Duals,	197 HP
B 19585	1991	CIH	7140 MFD Cab, 3388 Hours, 18 4 x 46 Duals,	197 HP
B 19584	1991	CIH	7140 MFD Cab, 3083 Hours, 18 4 x 46 Duals,	197 HP
B 19217	1997	CIH	7240 MFD Cab, 2209 Hours, 20 8 x 42 Duals,	195 HP
A 23070	1984	JD	4850 MFD Cab, 6971 Hours, 20 8 x 42 Duals,	192 HP
A 18853	1999	CIH	MX 220 MFD Cab, 221 Hours,	186 HP
C 23046	1979	Case	2590 2WD Cab, 6636 Hours, 20 8 x 38 Duals,	180 HP
A 23043	1990	CIH	7130 MFD Cab, 7279 Hours, 18 4 R 42 Duals,	172 HP
C 31092	1980	IH	3788 MFD Cab, 6579 Hours, 20 8 x 38 Rear Tires,	170 HP
A 22559	1983	JD	4650 MFD Cab, 5800 Hours, 20 8 x 38 Duals,	165 HP
A 22784	1999	CIH	MX 200 MFD Cab, 513 Hours, 18 4 x 42 Duals,	165 HP
C 19589	1992	JD	4560 2WD Cab, 2280 Hours, 18 4 x 46 Rear Tires,	156 HP
B 19587	1992	JD	4560 2WD Cab, 1806 Hours, 18 4 x 46 Duals,	156 HP
B 17774	1997	CIH	8920 MFD Cab, 2073 Hours, 18 4 x 42 Duals,	155 HP
B 40119	CIH	7220 MFD Cab, 2550 Hours,	155 HP	
A 23004	1988	CIH	7120 2WD Cab, 4883 Hours, 20 8 x 38 Rear Tires,	151 HP
B 19583	1991	CIH	7120 2WD Cab, 2115 Hours, 18 4 x 46 Rear Tires,	151 HP
B 19582	1991	CIH	7120 2WD Cab, 3093 Hours, 18 4 x 46 Rear Tires,	151 HP
B 19581	1991	CIH	7120 MFD Cab, 3119 Hours, 18 4 x 46 Duals,	151 HP

100-150 HORSEPOWER

NO.	YR	MAKE	DESCRIPTION	HP
B 23077	1999	CIH	MX 180 MFD Cab, 46 Hours, 18.4 x 42 Rear Tires,	145 HP
B 40092	IH	1486 2WD,	145 HP	
C 19501	1989	CIH	7110 2WD Cab, 2531 Hours, 18 4 x 38 Duals,	131 HP
A 17811	1979	IH	1086 2WD Cab, 4533 Hours, 20 8 x 38 Rear Tires,	131 HP
C 22860	1976	IH	1086 2WD Cab, 4962 Hours, 20 8 x 38 Rear Tires,	131 HP
A 23190	IH	1086 2WD, 5072 Hours, 18 4 x 38 Rear Tires,	131 HP	
A 22937	1999	CIH	MX 150 MFD Cab, 491 Hours,	130 HP
C 31016	1973	JD	4430 2WD, 5980 Hours, 20 8 x 38 Rear Tires,	125 HP
A 23069	1992	CIH	5250 2WD Cab w/Ldr, 2743 Hours, 18 4R38 Tires,	112 HP
A 23186	1993	CIH	5250 MFD Cab,	112 HP
C 31342	1988	JD	4050 2WD ROPS, 5080 Hours, 18 4 x 38 Rear Tires,	100 HP
A 23138	1995	CIH	5240 MFD Cab, 3877 Hours, 18 4 x 38 Rear Tires,	100 HP

Less Than 100 HORSEPOWER

NO.	YR	MAKE	DESCRIPTION	HP
A 23187	CIH	5140 2WD Cab w/loader,	94 HP	
B 19890	1996	CIH	5230 MFD Cab, 1775 Hours, 18 4 x 34 Duals,	90 HP
C 19554	1977	IH	886 2WD Cab, 4152 Hours, 18 4 x 34 Rear Tires,	90 HP
A 23124	1993	Hstrn-Fiat 80-66 ROPS, 1000 Hrs, 18 4x30 Rear Tires,	70 HP	
A 23121	IH	656 Gas, 15 9 x 38 Rear Tires,	62 HP	
A 19381	1969	IH	656H W/Ldr, Diesel, 15 5 x 38 Rear Tires,	66 HP
B 19599	1960	IH	460D,	52 HP
C 19755	1976	IH	464, Gear, 7800 Hours, 14 9 x 28 Rear Tires,	46 HP
B 40048	1999	CIH	C50 MFD ROPS w/Ldr, 222 Hours, 14 9x28 Tires,	40 HP
B 18252	1970	Case	580 CK w/Ldr, Cab, 1274 Hours, 14 9 x 24 Rear Tires	
B 19689	1984	Ford	2110, 2661 Hours	
B 19898	Case	800, Gear, Gas, 15 5 x 38 Rear Tires		

Financing Available On All Used Tractors From Hooper

Special Programs Available for Under 100 HP Tractors

- 4 Month Interest Waiver
- Fixed Low Rate Financing as Low as 7.9% for 36 Months
- Split Rate Financing - 5.25% for the First 12 Months
- Lease Options

Special Programs Available for 100+ HP Tractors

- 4 Month Interest Waiver
- Fixed Low Rate Financing as Low as 6.9% for 36 Months
- Split Rate Financing - 4.9% for the First 12 Months
- Lease Options

Call a Hooper Salesman Today For Details
Financing Options Available to Change Without Notice

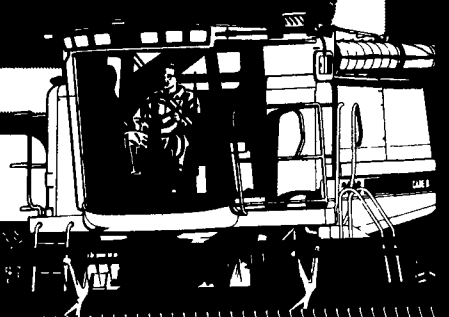
RENTAL TRACTORS

HOOPER HAS RENTAL TRACTORS FOR SALE, RENT OR LEASE. SCHEDULE YOUR RENTAL TRACTOR **NOW!**

Farm Machinery Done Better With Hooper's

ADVANCED MACHINERY SERVICE

All New & Used Products Backed By Hooper Parts & Service
VISIT OUR WEBSITE: www.hooper.com



CASE IH