

SEE BINKLEY & HURST BROS. INC.

For Used Tractors, Machinery, Skid Loaders & More!

Ask About Low Rate Financing OR Leasing Plans With Very Low Up Front Payments
Stop In Today or Call 1-800-414-4705

MISCELLANEOUS USED TRACTORS

1) **CASE 2294**, Cab & Air, 2WD, 540-1000 PTO, Approx. 130 HP, Air Ride Seat - \$13,800. UT 4503

2) **CASE IH MAGNUM 7130**, MFD, Cab & Air, Very Nice One Owner, We Sold New, Rated 150 Plus HP UT 4506

3) **1997 MODEL CASE IH 8950 MAGNUM MFD TRACTOR**, Loaded with Dual Wheels, Dyno Tested 232 HP, 20.8x42 Rear Tires with Matching Axle Duals and 16 9x30 New Firestone Tires - \$52,000. UT 4559.

4) **1991 CASE IH MAGNUM 7140 MFD TRACTOR**, 20 8x42 Duals, Axle Mount, Approx. 200 HP Dyno Tested, Nice, Approx 8388 Hrs - \$36,500. Serviced, Ready to Work. UT 4560.

5) **CASE IH MODEL 1594** 2WD, ROPS, Open Station Tractor, Rated 85 HP with Newly Rebuilt Powershift. UT 4516

6) **CASE IH 5240**, 2WD, Cab, A/H, 1996 Model, Low Hours & Case IH 520 Quick Tach Loader \$39,900. UT 4469.

7) **IH 1066** Cab, Approx. 120 HP, 2 Remotes, Dual Shaft 540-1000 PTO. UT 4374.

8) **MAGNUM CASE IH 7230 MFD**, 2,118 Hrs (One Owner), 20 8x42 Radials with Duals, Triple Hyd., Outlets, 18 Front Weights UT 4382

9) **IH 140**, Cultivator Tractor. UT4532

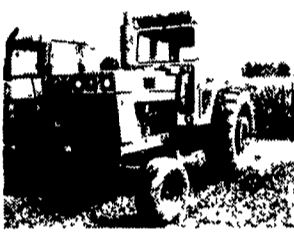
Used Duals, Heavy Duty Axle Mount with 4" Axle Hubs, 20.8x42 Radials, Approx. 40% Tread. Come & See! (UM 4498)

John Deere 2950 Diesel Tractor



Rated 85 HP (1984) with Hi-Lo Shift, 18 4x34 Tires, Rebuilt Hydraulics, Brakes, Super Sharp UT 4521
Ask for Leonard or Landis

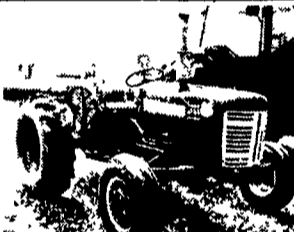
IH 1066 Diesel Tractor



8 Speed Trans, Dyno Tested, 121 PTO HP, Runs Great, 18 4x38 60%, 2 Hyd Remote Outlets, Rear Wheel Weights, 540-1000 Dual Shaft PTO, Solid Tractor UT 4374
\$9,850

Rare Find, Collectors Take A Look!

IH 350 Diesel Utility Wide Front TA, Power Steering, Fast Hitch, 3083 Hours, Original Paint, Straight Sheet Metal, Starts Easy, Good Clutch & Brakes and Tight Steering UT 4578



HAY & FORAGE MACHINES FOR IMMEDIATE DELIVERY

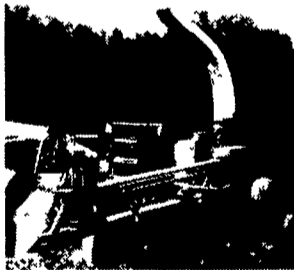
Check Our Low Rate Financing For Eligible Machines

Look At This One! Case IH 12 Foot Mower Conditioner, Cab & Air



UT 4520
Only 907 Hours, We Sold New! One Owner, Hydrostatic Drive See Landis For A Good Quality Mower Conditioner Priced to Go! Ask About Low Finance Rates To Keep Your Costs Down!

Gehl 1060 Harvester



Tandem Axle with Hyd Swing Tongue UM 4456

1) **DION ARTSWAY FORAGE WAGON** w/Roof on Tandem Gear.

2) **GEHL MODEL 610 FORAGE WAGON**, No Roof on Tandem Gear

3) **ZIMMERMAN 36' ELEVATOR** w/Motor, Like New. UM 4503.

4) **GEHL MODEL 1540 BLOWER**, 540 PTO.

5) **GEHL BU 980 FORAGE BOX**, Slightly Used, Almost New.

6) **CASE IH 600 BLOWER** - \$2,850. UM 4501

7) **DION ARTSWAY FORAGE BOX**, 6x16 on Tandem Gear - \$2,750.

8) **NEW HOLLAND 1499 SELF-PROPELLED HAYBINE**. UT 4565

9) **USED GEHL 100 GRINDER MIXER WITH SCALES**

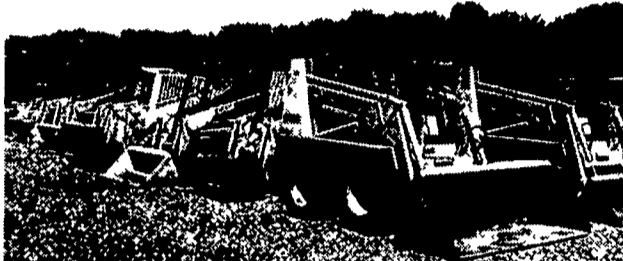
10) **CASE IH 8312**, Center Pivot 12 Foot Disc Mower Conditioner with Hyd. Header Tilt with Rubber & Steel Rolls, Like New Cond. UM 4350

11) **NEW HOLLAND MODEL 990W**, 7 Foot Hay Pick-up Header, for NH Forage Harvesters. UM 4263. Ask For Landis

12) **CASE IH MODEL 8440 5X5 ROUND BALER**, Inexpensive, Get a Deal! UM 4479.

NOW IS AN EXCELLENT TIME TO CHOOSE A QUALITY PREOWNED SKID STEER LOADER FROM BINKLEY & HURST

Take Advantage Of This Special Low Rate Finance Program From Binkley & Hurst Bros. Inc.
5.9% for 12 Monthly Payments;
6.9% for 24 Monthly Payments;
7.9% for 36 Monthly Payments;
Pending Credit Approval!



1) **CASE 1840**, 50 HP Diesel (1995) Model with Aux. Hyd., Backup Alarm, Good Paint and Almost New Tires - \$13,900. UT 4556.

2) **GEHL 5625 DIESEL**, 52 HP (1993), Only 1896 Original Hours (We Sold New), 12:00x16.5 Tires, 72" Bucket, Aux Remote Hyd., Clean - \$14,900. UT 4554.

3) **60" MANURE FORK** To Fit Gehl 4625 Skid Loader, Like New - \$500. UM 4363

4) **65" UTILITY BUCKET** To Fit Gehl 4625 with New Cutting Edge - \$500. UM 4429

5) **CASE 1840 DIESEL** with Self-Leveling Loader, Deluxe Seat (Sharp) - \$12,500. UT 4154.

6) **CASE 1845B DIESEL** with Newly Recapped Tires, Good Bucket, One Owner Machine - \$8,950. UT 4173

7) **CASE 1840**, 50 HP Case Cummins, Loaded (1993) - \$12,900. UT 4319.

8) **CASE 1845C**, 56 HP Case Cummins Diesel (1998), One Owner with Large 80" Bucket, Aux. Hyd. - \$17,900. UT 4399.

9) **GEHL 9MD BACKHOE** to Fit Gehl 6620 Skid Loader with Wing Type Skid Loader, Joy Stick Control, 18" Bucket - \$4,500. UM 4435.

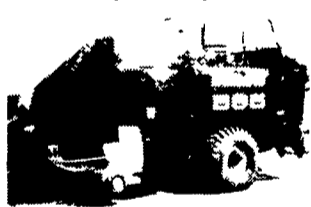
10) **GEHL 4625**, 47 HP Kubota Diesel Power, Only 1190 Hours, with Self-Leveling Loader with 65" Bucket (1997 Model), Nice - \$13,900. UT 4447

11) **CASE 1840**, 50 HP Diesel, New Tires, New 63" Dirt Bucket - \$11,500. UT 4467

12) **CASE 1840** (1996 Model), 2276 Hours, Aux Hyd., Deluxe Seat, Utility Bucket - \$13,500.

13) **CASE 1845C**, 1998 Model, Only 1028 Hours, Nice Machine - \$16,750. UT 4550

SAVE NOW! \$52,500
Buy or Lease Purchase,
No Trade Only \$48,900
Almost New Square
Baler! Get Ready to
Bale with this Medium
Size Square Baler
Model 595 3x4 Bale Size
with Liquid Applicator



Hardly Broke In Yet! Customer That Traded Wanted Large Model. If You Need Help To Get Started Baling with This Baler After The Purchase, Our Baler Technicians May Be Able To Give Their Assistance! (UM 4093)

13) **JOHN DEERE 1327 PULL TYPE DISC MOWER CONDITIONER**, Good Cond., Priced To Sell. UM 4478.

14) **GEHL 1080 PULL TYPE MODEL DISC MOWER CONDITIONER**, 7'9" Cut. UM 4317.

15) **3 PT HITCH RHINO DISC MOWER**, 5 Spinner 82" Cut, Used Very Little - \$4,400. UM 4486.

16) **JOHN DEERE 3960 FORAGE HARVESTER**, With 3 Row Narrow Corn Head and 6' Hay Pickup. UM 4438.

17) **SPEED KING 36' BALE ELEVATOR**, Weathered. Was \$1,575 NOW ONLY \$695 OBO. UM 4009

MISC. USED FARM EQUIPMENT

1) **QUICK ATTACH LOADER** to fit Case IH Maxxum 5130 and 5140 and 5200 Series Tractors, Bushog Model 2846 with Single Lever Control Valve \$4,650 OBO. Used Very Little - Ask for Leonard. UM 4489

2) **PRE-OWNED KNIGHT MODEL 8030 SLINGER SPREADER!**

3) **GEHL MODEL 322 SPREADER** With 19 5Lx16 1 Tires on Tandem Axle, 1000 PTO \$6,400 OBO. UM 4462

4) **GEHL MODEL 100 GRINDER MIXER** with Scales & Unload Auger Extension - \$3,450. UM 4450

5) **TOP FILL MANURE TANKER 3600 GALLON TANDEM AXLE** (Diller) with Bottom Rear Spreader, 540 PTO, 21 5x16 1 Tires UM 4383

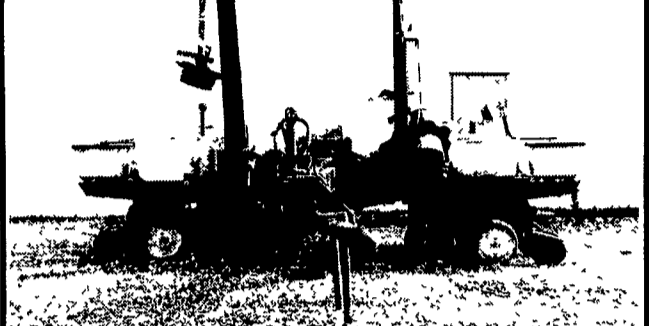
6) **UNVERFERTH ZONE TILL 6-ROW COULTER CART SYSTEM** with 750 Gallon Liquid Fertilizer Poly Tank. A Nice Pull Type System, Check it Out! UM 4416.

Before You Purchase A New JD Planter Consider a Good Deal On An (Almost New) Used John Deere Model 1750!

Vacuum 6-Row Narrow 30", Liquid Fert. with Squeeze Pump, Frame Mounted No-Till Coulters, Hinged Tongue, used 2 Seasons, Loaded. UM 4283

Check With Binkley & Hurst For Your USED TILLAGE AND PLANTER NEEDS

NOTE! COULD YOU USE A 12-ROW PLANTER WITHOUT LAYING OUT A LOT OF MONEY?



We have just what you may have been searching for! We are selling as traded (2) **JOHN DEERE 7000 12-ROW HYD FOLDING PLANTERS!** Plus this is a good time to make your purchase and be ready for planting!

1) **JOHN DEERE 7000 12-ROW**, 30" Row Spacing Unit, No-Till with Cast V Closing Wheels, Markers, Insecticide and Population, JD 600 Monitor, **ONLY \$5,900.** UM 4377

2) **JOHN DEERE 7000 12-ROW**, Hyd Folding Planter with Liquid Fertilizer, (Heavy Duty Yetter Row Markers - Like New), Unit Mount No-Till Coulters with Rubber V Closing Wheels, Insecticide **DON'T MISS THIS ONE - ONLY \$4,900.** UM 4382

1) **SUNFLOWER MODEL 1211 13 FOOT DOUBLE OFFSET ROCK FLEX DISK HARROW**, with Packer Hitch & Hoses - \$6,500. UM 4464

2) **KRAUSE 25' MODEL 4900 DISK HARROW** Double Offset, Good Blades, (8) 11Lx15 Tires including 3-Row Coil Tine Harrow ~~\$14,000~~ \$8,900 Price Reduced. Ask For Ray UM 4251

3) **SUNFLOWER 9 SHANK 4212 COULTER CHISEL** with Hyd Coulters Gangs with Walking Beam Tandem, 1998 Model - \$11,200. UM 4408

4) **SUNFLOWER MODEL 1232 12 Ft Narrow Transport Wing Disk Rock Flex Disk Harrow** with New 22" Dia x 1/4" Blades on Front & Rear Gangs, Double Offset Design w/Packer Hitch & Hoses, Good Paint - \$13,500. UM 4419

5) **KRAUSE MODEL 4900 25'2" Cut, Double Offset Rock Flex Disk Harrow**, Good Condition, Was \$16,500 **DISCOUNT FOB PRICE NOW ONLY \$12,800.** UM 3967

6) **JOHN DEERE 9 FT. TRANSPORT DISK HARROW** with Hyd Cylinder - \$1,000 **MAKE OFFER.** UM 4339

7) **RAWSON 6 SHANK AUTO RESET 3 PT ZONE BUILDER RIPPER**, w/Coulters UM 4418

8) **JOHN DEERE F-325**, 3 Pt Mounted 3-18 Hyd. Auto Reset Moldboard Plow - \$1,700 OBO. UM 4314

9) **Deep Till 30" Spacing Sub Soil Automatic Reset** with Coulters **UNVERFERTH ZONE BUILDER 4 Shank - SPECIAL \$5,900** NE 5499

10) **SUNFLOWER 4301-5**, Sunflower 5 Shank Auto Reset Ripper, Very Good Cond - \$5,600. UM 4070

11) **GLENCOE 9 SHANK PULL TYPE COULTER CHISEL** Decent Cond - \$3,750. UM 4482

12) **JOHN DEERE 7000**, 4-Row Wide with Liquid Fertilizer. Was \$4,900 **NOW ONLY \$2,650 As Is.** UM 3687

13) **KRAUSE 25 FT. DOUBLE OFFSET DISK HARROW** with Standard Bearing Hangers, with 3-Row Coil Tine Harrow (8 11Lx15 Tires), Front Blades 20" Dia. 8" Spacing, Rear Blades 20-1/2" Dia. on 7-1/2" Spacing Price Was \$14,000 - **NOW ONLY \$8,900.** UM 4251

14) **IH 800 6-ROW LIQUID FERTILIZER PLANTER** with Ketton Seed Firmers, (Squeeze Pump Not Along), Selling As Traded at 50% OFF Was \$950 - Less 50% **MEANS YOU PAY ONLY \$475!** Delivery Extra

15) **JOHN DEERE 7000 CONSERVATION 6-ROW** with New Kinze Frame-Mounted No-Till Coulters, All New Yetter Row Units, JD Kinze Type Finger Pickup, Liquid Fertilizer, Reconditioned, Repainted, Like New! UM 4075

16) **JOHN DEERE KINZE TYPE** Great Plains Heavy Duty 6-Row with Unit Mounted No-Till Coulters, Radar Monitor, Almost New, Ready To Plant! UM 4178

17) **KINZE 6-ROW N 30"** with No-Till Coulters & Liquid Fertilizer, Monitor, Markers and Rubber V Closing Wheels, PT Series UM 4404

18) **NEW IDEA/KINZE BUILT 4-ROW** with Markers - \$3,600. UM 4424

19) **A.C. 4-ROW FRAME** with No-Till Units & Insecticide - \$500. UM 4412

20) **JOHN DEERE 7200 6-ROW NO TILL** - \$7,900. UM 4444

21) **DEUTZ ALLIS 385 4-Row No-Till** with Liquid Fert \$2,500 OBO UM 4423

22) **KINZE 2000 SERIES 6-ROW NARROW DOUBLE FRAME PLANTER**, No-Till Frame - \$17,500 UM 4381

23) **JOHN DEERE MODEL 7000 8-ROW PLANTER**, with Liquid Fert, Squeeze Pump, Double Disc Openers, No-Till Units, Monitor, Rubber V Closing Press Wheels, Insect, and Markers UM 4348 **A Lot Of Planter For the Price! Come & See!**

24) **JOHN DEERE 4-ROW**, Only \$1,100. UM 4091

25) **JOHN DEERE 6x30 7000 NO TILL.** UM 4096

26) **MONOSEM NGT SPECIALTY PLANTER**, 6-Row 20" Spacing, 3 Pt Advance Frame, Vacuum, Markers. UM 3826

27) **GREAT PLAINS 6030**, 6-Row 30" Spacing, Dry Fert with Unit Mount No-Till Coulters, Radar Monitor, Planted Approx 400 Acres, Almost New UM 4123

28) **KINZE 6-ROW BY 30" ROW SPACING** PT Pull-Type Planter - \$6,500. UM 3913

BINKLEY & HURST BROS., INC.

(717) 626-4705

www.binkleyhurst.com

133 Rothsville Station Rd.
P.O. Box 0395, Lititz, PA 17543-0395
Located 1/2 Mile North of Rothsville

1-800-414-4705
Fax 717-626-0996

Visit us on the Internet at <http://www.casecorp.com>
Case IH is a registered trademark of Case Corporation

