

Public Auction Register

Closing Date Monday 5:00 P.M.

• of each week's publication

Internet Sale Register will be updated

every Sat. at 2:23 P.M.

ATTENTION Auctioneers

All sales register info needs complete address, street, town, county & state.

WED SEPT 27 - 12PM Cora E Arnold Estate Farm and Land Auction, 705 Old Evergreen Rd Lebanon, Pa Nelson L Ebersole, auct AU-001307-L

THURS SEPT 28 - 10AM Bath Steuben Co., NY Steuben Co Surplus Equipment Auction Prrung Auctions

FRI SEPT 29 - 6 PM Feeder Sale, New Holland Sales Stables, 101 W Fulton St., New Holland, Pa

FRI SEPT 29 - 7 PM Feeder Cattle Sales Finger Lakes Livestock Exchange, Canandaigua, NY

SAT SEPT 30 - Horse Sale C 30 Tack, 11AM Horses Middleburg Livestock Auction Sales, Inc Middleburg, Pa

SAT SEPT 30 - 9:30AM HH, Farm Equip, At 101 Meadows Rd Newville, Cumberland Co Pa For Dewey Shaffer Fremman & Breneman AU163-L

SAT SEPT 30 - 1PM 65 Acre Limestone Farm take Rt 772 to

Brownstown turn on East Main St at square, go 1 mile to Turtle Hill Rd., 1st farm on Turtle Hill Rd. Lanc Co. By Edwin W & Katie Z Noll Snyder's Auction Service

OCTOBER

TUES OCT 3 - Real estate 107 1/2 acre farm & personal prop., tools 130 Krumstown Rd., Myerstown (Millcreek & Jackson Twps), Leb Co Rt 501 N., turn right Elco Drive, pass Elco High School, turn right Warluff Rd (Becomes Krumstown Rd.) farm on right By Henry N & Martha G Weaver Kline, Kreider & Good Aucts

TUES, OCT 3 - Fat Cattle Sale Carlisle Livestock Market, Inc., 548 Alexander Spring Road Carlisle, PA

TUES, OCT 3 - 7:45PM Feeder Cattle Sale Carlisle Livestock Market Inc. 548 Alexander Spring Rd Carlisle, PA

WED, OCT 4 - 9AM Lumber & Building Supplies To be held at Wolgemuth Auction 109 N Maple Ave, Leola, Lanc Co Pa 717-656-2947

THURS OCT 5 - 1PM 179 Acre Farm in Snyder Co. 115 Tillable 1/2 mile S of Rout 35 and 104 intersection Mt Pleasant Mills, Pa Mr & Mrs Clyde Alderfer Kenneth E Smith, Dennis Haslinger, aucts AU 867-L, AU 2689-L

FRI OCT 6 - Graded Feeder Sale 7 PM Middleburg Livestock Auction Sales, Inc., Middleburg, Pa

SAT OCT 7 - 2 day auction of 3 generations of antiques At Mt Airy Fire Hall, 880 Durlach Rd., Stevens By Gilbert J Paul Aaron E. Martin, Auct

SAT OCT 7 - 8:30AM - Horse 10AM Mel's Stables, 834 Wallace Rd., New Holland PA Mel Hoover, Auctioneer

SAT, OCT 7 - 10AM Cowboy and Western Memorabilia, Double D Round Up - Miller's Auction Center, Exit 3 of I-78 Bethel, Pa in Berks Co Dwight D Miller, Dave Ebersole, aucts

SAT OCT 7 - 10AM Heifer Sale New Holland Sales Stables, 101 W Fulton St., New Holland, Pa

FRI, OCT 13 - 1PM State Graded Feeder Pig Sales Carlisle Livestock Market, Inc 548 Alexander Spring Road, Carlisle, Pa

FRI OCT 13 - 6 PM Feeder Sale, New Holland Sales Stables, 101 W Fulton St., New Holland, Pa

FRI OCT 13 - 7 PM Dairy Sale Middleburg Livestock Auction Sales Inc., Middleburg, Pa

SAT OCT 14 - 2nd day auction of 3 generations of antiques at the Mt Airy fire hall, 880 Durlach Rd., Stevens By Gilbert J Paul, Aaron F. Martin Auction Service

SAT OCT 14 - Real estat (2 separate tracts), brick rancher on 1/2 acre & 1.8 acre tract 128 Center Ave., Terre Hill Personal property, tools furniture Rt 897 N to Terre Hill, turn left Main, turn right Center By Paul A & Edna M Weber Kline, Kreider & Good, aucts

SAT OCT 14 - 10AM Feeder Cattle Sales Finger Lakes Livestock Exchange, Canandaigua NY

TUES, OCT 17 - Fat Cattle Sale, Carlisle Livestock Market, Inc., 548 Alexander Spring Road, Carlisle, PA

TUES, OCT 17 - 7:45PM Feeder Cattle Sale Carlisle Livestock Market, Inc 548 Alexander Spring Rd., Carlisle, PA

WED OCT 18 & THURS OCT 19 - 8:30AM Wed Lawn & Garden Tractors, misc items Thurs Misc items, tires, posts, etc Farm Equip & tractors 6 miles S of Chambersburg, Pa 1 mi E of Marion, just E off I-81 at Marion along Rt 914 Marion Auction Service

THURS OCT 19 - 11 AM The Willow-Terrace Harvest Sale Henry Beneke & Family, owner, Millerton, NY 100 High production registered Holsteins The Cattle Exchange

PUBLIC SALE

Due to Baker's Stove Mfg. setting up for a new line of Baker's Stove & need warehouse & work floor space will have Public Sale of unneeded inventory.

Sat., August 12, 2000
Time: 8:30 a.m.

3 Forklifts - 1970 Mercury Conv. - Antiques - Cook Stoves - Trailer Supplies - Shop Equipment - Show Cases & Iron Scrap

Located at 711 E. Mt. Airy Rd., Lewisberry, Pa. at Baker's Wood Stove Mfg. Approx. 1 mile N. of Sk1 Round Top Rd., turn into Mt. Airy Rd. or Rt. 15 use the Mechanicsburg & Bowmansdale Exit, take S. York Rd. through Siddonsburg, Pa. through Mt. Pleasant, Pa. approx. 1 1/4 miles on York Rd., turn L onto E. Ridge Rd. go 1 mile, turn R. onto E. Mt. Airy Rd. go 1 mile to sale. Signs posted.

Forklifts - Mercury Conv. - Trailer Supplies - Shop Equip. - etc. Allis Chalmers ACP 80, 8000 lb. dual tires, Yale propane 4000 lb. air tire & Yale propane hard tire fork lifts; '70 Mercury Cougar Conv. white w/black top & interior; hyd floor type fork lifts; single axle metal trailer w/sides; Everett Industrial cut off saw; H. Wright punch press; Ingersoll-Rand heavy duty air compressor; Niagara punch press; Motch & Merry Weather 24" Indl. size lathe; A. Barbogg floor drill press; flat steel bender; power cart elect. winch; kiln for sand casting; heavy duty shaper; wood duplicate machine; axle jig; plywood saw; 16 HP wood splitter; 27-Heavy duty punch & die sets; elect. motors up to Indl. size; 2 complete Antique cook stoves; 4 cook stove apart to be restored; 25-Baker Stove selling as scrap; metal shelving; stove blowers, hot water tanks; Losch stoke unit for furnace; 3 cast dinner bells; hyd. cylinders, some heavy duty; hyd. pumps; some walnut for gun stocks; trailer axles; rims & tires; stone fireplace back drop; air purifier; 3 metal & 1 oak 6' long glass showcases; conveyor rollers; anvil blanks; iron tea kettles; long chains & binders; chain hoist; drop axle for wood splitter; heavy duty beam trolley, heavy I beam; steel fence post for chain link fence; **Trailer Supplies;** spindles, Carlisle Tire & Rubber tires & rims, 60-18 5x8.5x8", 56-5.70x8", 12-4.80x8" & 50 plus 4.80-400x8"; hub caps for 8" rims; dust cap; bearings; hanger kits; leaf springs; axle hubs; Jig for welding trailer frame; tons & tons of scrap iron & cast iron, plus numerous of items not mentioned.

Auctioneer Note: If you're in Mfg. business & need Equip. don't miss this sale. **NOTE:** Baker's Mfg. is not going out of business. They will cont. to Mfg. & sell stoves. **Preview** of items Thurs. & Fri before the sale

Terms of Sale: Cash or good personal Pa Checks w/proper ID No out of state checks. Refreshment on sight Not responsible for accidents

NANCY BAKER, Owner

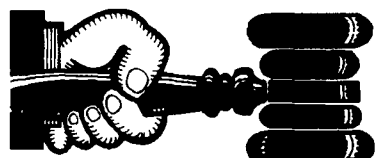
Little IKE Eichelberger Auctioneer
Pa. Lic. #AU.1954-L

Now booking all types of public sales.
Ph. Dillsburg 717-432-0006

Terry Shetron Auctioneer
Pa. Lic. #AU.003732-L

NOTICE!!!

Look For Public Sales Scheduled Past Deadline On Second To Last Page Of Section A



AUCTIONEER'S DIRECTORY

Call 717-626-1164 to list your auction service.

NOTICE

To assure that your Public Sale appears in the Public Sale Section we must have your advertisement by 5 P.M. Tuesday of each week's publication.

Complete Auction Service
ALL POINTS AUCTION CO.
LEBANON, PA
717-270-4555



Real Estate • Farm Equipment • Antiques • Household Goods

It doesn't cost to use our Auction Service...It Pays.
CALL TODAY!!



KREIDER, KLINE & GOOD AUCTIONEERS
COMPLETE PROFESSIONAL AUCTION SERVICE
REAL ESTATE - FARMS & RESIDENTIAL PERSONAL PROPERTY - ANTIQUES - FARM STOCK SALES - LIQUIDATIONS

RANDAL V. KLINE AUCTIONEER-REALTOR
717-733-1006

LLOYD H. KREIDER AUCTIONEER
717-786-3394

ROY E. GOOD, JR. AUCTIONEER
(717) 445-4309



Merle Fberty AU 2417-1 • Alvin Horning AU-0433-L
1 Iton Horning AU-0434-L

Morgantown, PA (610) 286-5183

>> Courteous Real Estate Services

>> Professional Auctioneers

>> State Certified Appraisers

>> Specializing in Farms and Land

SCHOOL CONSIGNMENT PUBLIC DISPOSAL AUCTION

Thursday, August 10, 2000

Time: 9:00 A.M.

To be held at the rear of the Dauphin County Technical School
6001 Locust Lane (Colonial Park), Harrisburg, PA
2 miles East of Central Dauphin H.S.

VEHICLES - 1984 International Bus; (5) 1983 International Bus; (2) 1986 Chev. Mini-Bus; 1981 Toyota Truck; 1980 Mercedes Benz SL280; Ford Tractor w/Bush Hog Mower.

OFFICE EQUIPMENT: Copiers; Fax Machine; Typewriters; Lots of Computers and Perifials (Apple, MAC, IBM, HP, etc.); Phones; Duplicators; Microfiche Mach; etc.

AUDIO-VISUAL EQUIPMENT - Distribution Centers; TVs; VCRs; Video Camera, OH Projectors; Projectors of all kinds; Headsets/Earphones; Reading Machines, Screens, Tape Recorders & Players; Projection Panel; etc.

FURNITURE - Student Desks/Chairs; Teacher Desks/Chairs; Auditorium Seats; Metal Cabinets; Card Cabinets; Shelving; Book Racks; File Cabinets; Science Tables; etc.

KITCHEN - Salad Bar; Cafeteria Tables; Milkshake Machine; GE Stove; Meat Slicer; Pots; Pans; Bowls; Cash Registers; Milk Coolers; Plates/Bowls; etc.

SHOP/LAB EQUIPMENT - Davidson 601 Press; Multi 451 Stapler; Gravity Oven; Transite Oven; Portable Power Tools; HP Plotter; Speedair Air Compressor; Metal Shop Cabinets; Steam Cleaner; Barret Brake Riveter; Drill Press; Shop Press; Autovance; etc.

MISCELLANEOUS - Nordic Track; Honda Mowers; Gas Hedge Trimmers; Weed Trimmers; Toro 727 Tu Blazer; 30 & 40 gal. Aquaria; Eraser Cleaners; Custodial Carts; Gym Equip; Landing Mat; Sewing Machine; Soda Machine; Yale Safe; 65 hp Mercury Outboard Engine; Drinking Founts; Band Equip; Dentist Chair; Paper Cutter; Arrows & Targets; Chalkboards; Scale; and many items too numerous to mention.

Auctioneer: **Bob Rath AU-000741-L**

Phone - 717-566-1297

Refreshments Available

Consignments by: Capital Area Intermediate Unit; Central Dauphin SD; Dauphin County Technical School; Halifax Area SD; Lower Dauphin SD; Middletown Area SD; Susquehanna Twp. SD; Upper Dauphin Area SD.

Conditions by: **Dauphin County Technical School**

Terms: Cash or Approved Check

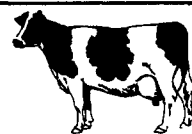
Order of Sale: **General Merch. - 9:00 a.m.; Vehicles - 12:00 Noon**

NOT RESPONSIBLE FOR ACCIDENTS

Only Ad - Clip and Save

Dairy and Livestock Sales

NEW HOLLAND SALES STABLES, INC.



New Holland, Pa.

Located 12 Miles East of Lancaster, just off Rt. 23

DAIRY SALE WEDNESDAY, AUGUST 2, 2000

10:30 AM
12:00 NOON

**OPEN BRED HEIFERS
BULLS, FRESH COWS, SPRINGERS**

Weekly Smuckers

• Merle Breneman • Leroy Smucker • Jim Hostetter
• Marvin Eshleman • Dale Hostetter • Daniel Z. Stoltzfus

150 - Springers and Fresh Cows ---

200 - Heifers, Springers, Shortbred, and Open ---

SPECIAL NOTE Registered Brown Swiss Bull Selling

Sire -- R. Hart RC Collection
-- M.L. - NEV - PR Tangerose ET
2-02 365 23620 4.3 1006 3.7 866
2nd Dam 6-06 365 28130 4.0 1135 3.6 1022
This bull has 2 brothers in A.I. 2nd Dam has a son in A.I.
Born 11-99 ---

Top Pedigree -- Genetics - That will move the breed forward

Note - Heifer Sale - Sept. 9, 2000

NOTE TO CONSIGNORS!

Please send all information along with your cattle Tues. Fresh Date, Breeding Dates, Milk Weights, with your trucker.

Sale Managed By

New Holland Sales Stables, Inc.

Barn 717-351-4311 Fax 355-0706 Home 717-397-5538

Norman & David Kolb, Mgrs. 61L

got milk?