

# Livestock Breed Conservation Program Honored

PITTSBORO, N.C. — The American Livestock Breeds Conservancy recognized the important breed conservation work by Richard Nicoll of the Colonial Williamsburg Foundation's

Coach and Livestock Department.

The Century Conservation Award was presented by the ALBC board of directors to Nicoll for his work in promoting

and conserving several endangered breeds of livestock and bringing the issue before the public within the context of the mission of the Colonial Williamsburg Foundation.

Farm animals have long been part of the Williamsburg experience. But when Richard arrived 15 years ago, the livestock program was low profile and little research had gone into the selection of livestock breeds.

He began to research 18th century material and compiled a list of breeds that would be appropriate for the time period.

Nicoll initiated a cattle program based on the Milking Devon for dairying and oxen work. This year you can even find a Devon beef roast sizzling on the spit in the Governor's Palace kitchen. He encouraged staff to do the research and to pursue the purchase of an American Cream Draft horse for the carriage program, and later the Canadian breed was added.

Nicoll improved the sheep program from using phenotypical sheep to genotypical sheep with the arrival of the Leicester Longwools, and essentially reintroduced the breed into North America. The poultry program has expanded to four historic chicken breeds, and there are plans to add turkeys and pigeons in the near future.

The historic rare breeds dramatically increased the interpretive potential and provided the opportunity to discuss rare breeds, the 18th century agricultural revolution, Robert

Bakewell's pioneering livestock breeding techniques, and the changing livestock industry around the world.

Williamsburg's fields and barns could have more easily been populated with more modern and common breeds. It would have saved time and money to use artificial insemination on the rare horses, sheep, and cattle, to avoid road trips to obtain new animals, and to move breeding groups. Yet the rare breeds have paid back the investment by providing interesting topics to discuss, beautiful animals to show visitors, and the feeling that Williamsburg is helping these vulnerable breeds to survive.

Colonial Williamsburg's conservation, study, and display of material culture is known and copied throughout the museum world. Thanks to Nicoll's vision and guidance, the livestock program is also well known in the museum world. He encourages other museum and living history sites to use rare breeds to enhance their mission. He is fond of saying he wants to make the rare breeds program so popular that it will continue long after he leaves Colonial Williamsburg.

Nicoll's contribution to rare breeds conservation has been invaluable, while at the same time enriching the experience of visitors to Colonial Williamsburg.

## Santorum, Donaldson Urge Repeal Of Death Tax

WASHINGTON, D.C. — U.S. Sen. Rick Santorum and Guy F. Donaldson, president of the Pennsylvania Farm Bureau, urged the U.S. Senate to repeal the "unfair estate," better known as the "death tax." Both leaders made their statements at a news conference here recently.

"Perhaps no section of the tax code is more unfair and more of a direct hit on entrepreneurship and the ethic of savings than the death tax," said Santorum as he pledged support for its repeal.

Donaldson, leader of the 28,000-member farm organization, said, "Many times Pennsylvania farm family heirs are forced to sell their farms to meet the financial demands of the 'death tax' following the death in the family. It's a situation where nobody really gains anything, except government, which collects a tax that virtually eliminates a farm family business."

The House passed The Death

Tax Elimination Act (H.R. 8) with a near veto-proof vote (279-136). The House-approved legislation repeals death taxes by the year 2010. The legislation retains assets (up to \$5.6 million) on a stepped-up basis when the tax is repealed in 2010.

The stepped-up amount would be indexed to increase automatically with the inflation rate. All estate sizes would retain stepped-up basis assets of \$1.3 million. If an estate were larger than \$1.3 million, the heirs could choose which assets retain the stepped-up basis.

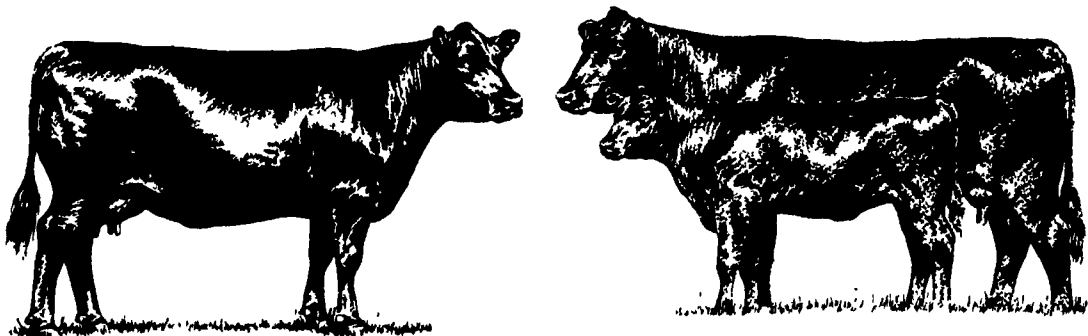
There would be an additional \$3 million of assets eligible for stepped-up basis on estate transfers between spouses, bringing the total value of stepped-up basis assets in such transfers up to \$4.3 million.

The legislation also reduces all estate tax rates by about 15 percent over 10 years and lowers the bottom effective rate from 37 percent to 18 percent. The top

rate is cut from 55 to 53 percent in 2001 and to 50 percent in 2002. All rates are reduced by a percent in 2003-2006, by 1.5 percent in 2007, and by 2 percent in 2008-2009. The unified credit is changed to an exemption in 2001, which lowers the bottom estate tax rate from 37 percent to 18 percent.

The Pennsylvania congressional delegation vote on the legislation split along party lines with Republicans favoring and Democrats opposing the legislation. Most Democrats are supportive of alternative legislation that would address elimination of estate taxes for family-owned businesses. Passage is questionable, and the Senate legislation is expected to mirror the House version.

While U.S. Senator Santorum supports estate tax elimination, U.S. Senator Specter is undecided. President Clinton has threatened to veto the House passed measure.



### MAILBOX MARKET FOR SALE

Pennoll seed, wheat, silo repairs, Geo B Leid, 919 Leid Rd., East Earl, PA 17519, Lanc Co

Fox 2300 2RN belt & p/u head, field ready, \$1,000/offer, 2-7 50-16 front tires & rims, 6 lug, 50%, \$50/offer, Berks Co., 610-944-7475

IH 3 pt 14' Vibra shank, IH 615 combine, MF drill, sm seed attach, gandy 14' seeder, Newcastle Co., 302-378-4726

12T Lowboy trailer, 24' long deck, elec brakes, pintel hook, needs some tires, \$2,800 OBO, Lanc Co., 717-367-0338

Hay rack for over truck cab, new 750/20 recaps, plastic feed bags, used once, call between 4-10 p.m., Berks Co., 610-756-6758

Fuerst 10' harrow & 3 pt lift, too wide, would like to trade for narrower one, Lanc Co., 717-733-1991

5' mower for economy, Jim Dandy tractor, \$250, call Ron, 973-377-5524

Seed rye, \$4/bushel, Northampton Co., 610-837-6356

DB mower free Ontario grain drill on steel, \$200, gooseneck horse trailer, side ramps, \$1,000, Craftsman mower, \$250 OBO, York Co., 717-235-5448

Jacob ewe plus, Merino cross ewe lamb, \$100, 2 Merino Jacob cross ewes, \$75 each, beautiful fiber, Chester Co., 610-925-3325

Ford 7710 FWP dual power, 3 remotes, new 184R34, good cond., \$14,000, Franklin Co., 717-532-3781

Hay truck 73 Ford, L800, 12 spd, 34,000 GVW, new eng & 20' bed, power tailgate, good tires, 6' sides, \$7,000 cash, Sch Co., 570-943-2238

Parkes 12" planer, \$450, call Ron, 973-377-5524

Giant Angora rabbits, white & colored, show quality, super wool & bodies, also Angora goats, E-mail moonray@erols.com, Lehigh Co., 610-967-6087

Columbia sheep, lambs & yearlings, \$125, Perry Co., 717-567-3629

JD rear wheel wts off 2520, approx 5T ear corn in crib, Choretime 10T feed bin, call eves, Lanc Co., 717-898-7849

NI 5 bar rake, \$400, IH 3x18 semi trip plow, \$400, Dixon 8HP 30" mower, PTO, bucksaw, Lanc Co., 717-336-2573

Farmall H, new tires on back w/loader, \$975, Allis WD-45 NF factory, power steering w/loader, \$2,200 OBO, Leb Co., 717-866-6485

Oliver Super 77 wide front-end gas, \$1,700, Timothy hay, \$2 50/bale, miniature horses & ponies, \$600 & up, York Co., 717-229-2218

Miniature donkeys, Jacks & Jennys, Adams Co., 717-624-7433

Clean, bright wheat straw, \$2/bale, Lanc Co., 717-786-9070

1986 Ford 250 p/u 4x4 truck, Ontario grain drill, 4" & 6" grain augers, gravity bin wagons, stainless hog feeders, Lanc Co., 717-653-4748

30-06 Classic Sporter in box, 270 Rem, like new, 3x9, Sako 243, 22 automatic, fair, JD 4440, sharp, Berks Co., 610-589-5763

Heifers & cows, overstocked, 323 NI corn picker, \$3,000, Gehl 700 harvester w/conveyor, \$2,950, Lanc Co., 717-625-4970

Honey, 60 lb bucket, light clover honey, \$57 & \$8 S&H, Perry Co., 717-957-4440

New 3 Super Hi Miller, 10 ply tube type, 2 traction sure grip, 10 ply tube type, \$250 for all, Berks Co., 610-582-4214

Rototiller 15', heavy duty, good cond., \$1,200, trade for soybean no-till planter, narrow row, call after 6 p.m., Gloucester Co., 856-478-6128

Craftsman 16HP Kohler oil, pressurized eng, 46" deck, hydro, trans, wheel wts, 3 yrs old, exc cond., \$800, York Co., 717-456-5463

JD 620, real classic, restored, for shows & pulls, extras incl., \$8,000, just below Oxford, PA, keep calling, MD, Cecil Co., 410-398-6337

13 6x38 Armstrong tire, like new, \$150, box staplers, exc cond., w/staples, \$35 each or \$60 for both, NJ, Cumb Co., 856-451-0338

AKC German Shepherd puppies, 9 wks, shots & wormed, Intercourse area, leave message, Lanc Co., 717-768-0107

Rebuilt clutch assembly for Farmall F12-14 belt pulley, air cleaner for same belt pulley for Oliver 70, York Co., 717-244-3415

Buff Orpington chicks, non-sexed, \$2 each, 3 for \$5, good quality, ltd quantity, (sons ages 4-8, first "job"), Adams Co., 717-259-9831

Badger 2 beater forage wagon, exc cond., BO, Brow bush hog, \$900, 14 tooth Brady chisel trailer model, exc cond., \$1,200, Sch Co., 570-277-0239

AC B hand start, runs good, parts, restore, \$450, Farmall A w/cult rear wts, needs TLC, \$950, Northampton Co., 610-759-4273

Diamond plated mud flaps & running boards for 90 Chevy ext cab & rubbermat for short bed, Lanc Co., 717-733-9413

1976 Int 4200, 350 Detroit 13 spd, 40,000 lbs., Hendricson rears, parts or repair, \$1,000, Juniata Co., 717-589-7676

NH 8'x15' hay wagon, \$600, Ontario 14 s d grain drill, NH 518 manure spreader for parts, BO, Sch Co., 570-277-0239

Austin Healey Sprite project car, old Esso gas pump, commercial turf equip, very reasonable, sale due to moving, Chester Co., 610-896-9519

1980 VW Westfalia camper, 2nd owner, well maintained, recently inspected, \$4,200 OBO, York Co., 717-292-3160

1993 7800 145HP tractor, power, shift, 3100 hrs, good cond., loaded GE auto washer, working cond., \$40, Leb Co., 717-867-4495

Mastiff/St Bernard mix pups, adorable, healthy, great temp F 200, also NH 707, 3 pt ht harvester w/hay head, Lanc Co., 717-445-4438

## MAILBOX MARKET AD FORM

Only ads submitted on this official form will be published in our mailbox markets. No photo copies accepted!

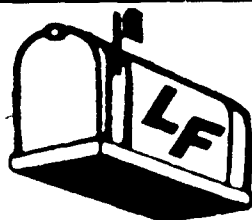
Please NO PHONE CALLS • Please PRINT LEGIBLY

Attach Your Lancaster Farming Mailing Label Here

Check One: For Sale  Notice  Wanted   
If You Do Not Wish To Be On The Internet Please Check Here

1	2	3	4
5	6	7	8
9	10	11	12
13	14	15	16
17	18	County,	Phone No.

No Phone Calls Please!



FREE TO SUBSCRIBERS ONLY

PLEASE READ ALL REQUIREMENTS BEFORE FILLING OUT FORM!

- Requirements:
- 1) Subscribers allowed "one" free Mailbox Market per month only (Ad will appear 1 week only)
  - 2) Lancaster Farming Mailing Label must be attached
  - 3) Limit 20 words
  - 4) Phone number must include area code
  - 5) Your County must be included
  - 6) Markets must be received in office by Monday or will be held until following week's issue
  - 7) No Business Ads accepted

\*\* The Lancaster Farming staff has the right to reject any Mailbox Markets that do not meet these requirements \*\*

Mail To:  
Lancaster Farming  
Mailbox Markets  
1 E. Main St.  
P.O. Box 609  
Ephrata, PA 17522