



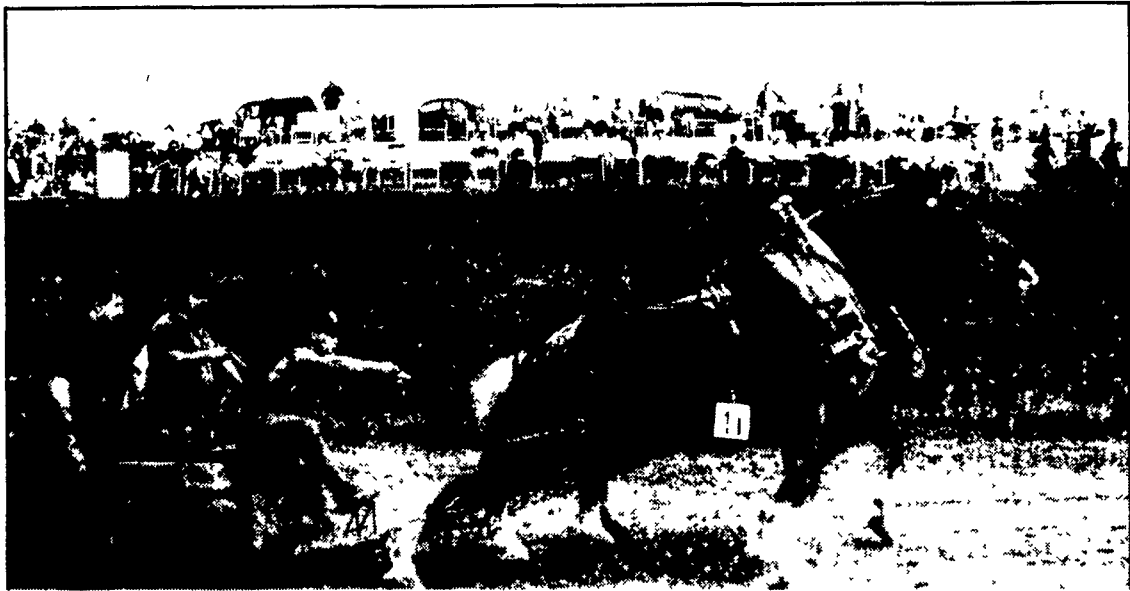
Scott Davidson, 6, and his brother Joshua, 9, scan the table of T-shirts and squeezable "stress cow key chains." Frances Reichard, left, from Chambersburg and Sally Gayman of Waynesboro work at the table sponsored by the Franklin County Holstein Dairy Promotion Committee.

Stress, Sweat,
And Sweet
Success In
Store At
Shippensburg Fair

Photos by Michelle Ranck



Morgan Painter, 6, Cory O'Donnell, 7, and Garrett Chestnut, 2, all from Newville, enjoy learning about livestock firsthand.



"Zeke" and "Ben" strain to pull the 5,500-pound sled during the evening's horse pull competition. The pair garnered second place in the heavyweight division.

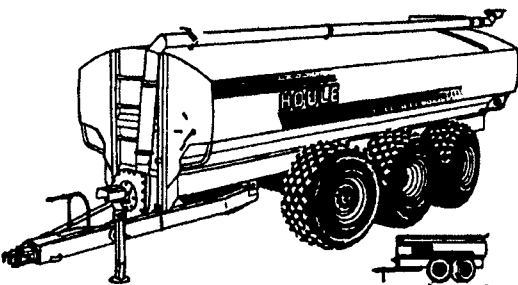
Jerry Shearer's team from Smithsburg Md., won first place in the heavyweight division with George Brindle and Adam Horst of Chambersburg second. Tom Catterton and Walter Brady from Dunkirk Maryland took home first place in the lightweight division with Mark Phipps, also of Dunkirk, second.



Michele Reasner of Jemi Jerseys feeds her winners a little extra hay. The Newburg farm had a big day, garnering four grand champion spots, intermediate and senior, also overall, with their animals. The Reasners brought 23 Jerseys to the fair this year.

**LIQUID
MANURE SPREADER**

WITH FLOTATION TIRES TO MINIMIZE SOIL COMPACTION Available with complete line of spreading tool bars and precise flow control to spread manure the ecological way eliminating spray drift and reducing odors. Our tool bars are designed to apply hog or dairy manure on growing fields, between rows of corn or on harvested fields.



4- 6- OR 8-WHEEL SPREADERS WITH POWER STEERING - 3800 TO 9500 US GAL.

SPREADERS WITH SINGLE AXLE OR TANDEM - 2350 TO 6000 US GAL.

- "V" shape bottom for more complete clean out.
- Standard exterior finish: epoxy primer and urethane paint.
- Low profile tank for maximum visibility and stability

HOLE FARM EQUIPMENT MANUFACTURER

—Financing Available—



"We're Here To Serve You"

SNOOK'S EQUIPMENT

RD 3, Box 130, Mifflinburg, PA 17844

570-966-2736

Ask For Ernest or Dean

**CONSIGNMENTS
WANTED**

**Clean up
your shop
&
Sell your
excess
inventory**

at our Annual Tool &
Machinery Auction
On October 20, 2000
Paradise Sales Barn, PA

Items accepted: New & Good - Used Hardware, Machinery, Metalworking & Woodworking Tools, Equipment & Accessories, and related items. All items must be in good condition. No junk, lumber, paints, tires, windows, household goods, furniture or toxic wastes.

Call 717-393-6466

or write to:

Wanda Esh Gregg

2340 Sue Ann Dr.

Lancaster, PA 17602

Sponsored by
Olde Country Connections, Inc.

You are Invited to our Field Day
On August 10th from 9:30 a.m. - 2:00 p.m.

Located at Cochranville Ag Service Warehouse
316 Faggs Manor Rd.
Cochranville, PA 19330

SPEAKERS INCLUDE:

- Glenn Shirk Lancaster County Extension Agent
- Tim Fritz Chester County Extension Agent
- Rich Bennek Cargill Forage Nutrition Specialist
- Tack Keen Independent Consultant from Brookside Labs

TOPICS INCLUDE:

- * Pasture Management
- * Making Soil Tests work for you
- * What is good corn silage?
- * Summer stress and milk production do's and don'ts
- * Is my farm profitable?

Free Lunch catered by Yost Chicken Bar-B-Que

FIELD TOUR HIGHLIGHTS

Ideas to improve crop production and quality
Corn plot from the NC+ Organics
Organic seed corn for 2001

IMPORTANT!

Because of the chicken bar-b-que please call by August 7th to tell us you're coming!

Cochranville Ag Service LLC
(610) 869-9627

Sponsored by:

CARGILL Cargill Hybrid Seeds
724-468-6533
Seed that delivers!

BARENBRUG Aaron King Seeds
Barenbrug Seeds
717-687-6224

BROOKSIDE Brookside Laboratories
419-753-2448

Homestead Nutrition Inc.
New Holland, PA
717-354-4398
Balanced Nutrition for
Soil & Livestock

FARM FOR PROFIT Farm For Profit
717-656-0067