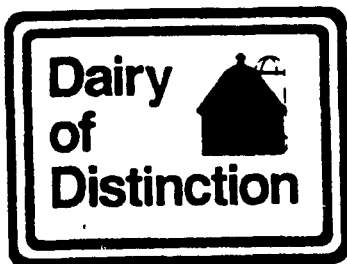
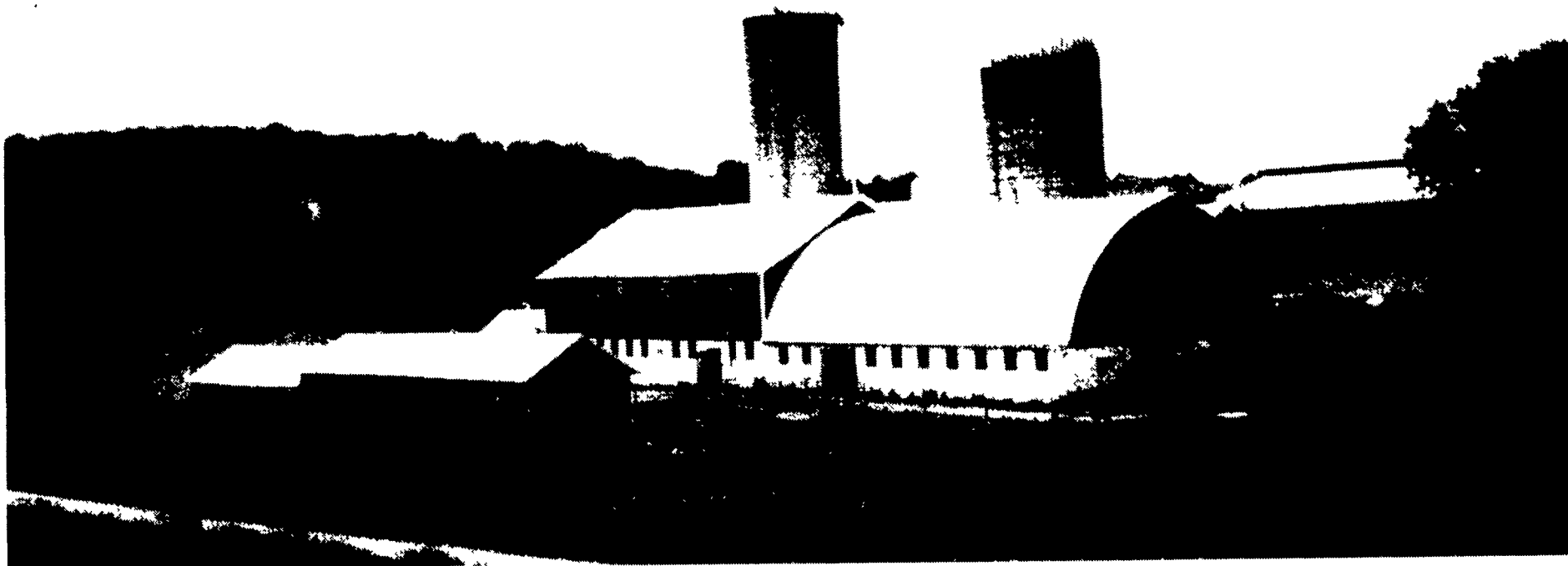


Congratulations To The 2000 Dairy Of Distinction Winners

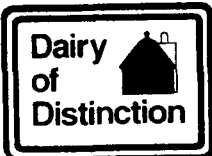


Somerset County

Donald & Janet Cober

This 200-acre farm owned by Donald and Janet Cober from Berlin has been in the family for four generations. The Cobers milk 60 head of Holsteins and have 40 replacement animals. They farm corn and alfalfa. Both Donald and Janet work full-time on the farm, maintaining a herd average of 20,000 pounds. Their children, Donnie and Melissa, also help on the farm. The Cobers' milk is shipped to Snieders Dairy in Pittsburg.

Congratulations!



Award Winners!

From...

MOUNTAIN VIEW SUPPLY, INC.

RD 1, Box 1392 Hamburg, PA

610-488-1025

WESTFALIA

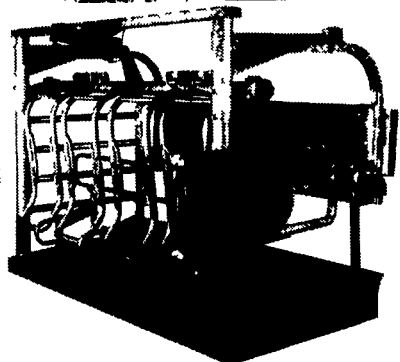
SURGE

Magnum 90i

Individual Indexing Parallel Stall

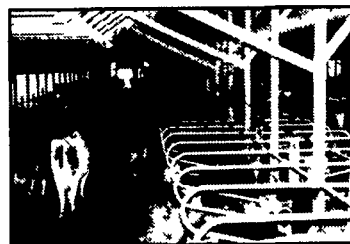


The MAGNUM SERIES of parlor stalls are internationally designed, engineered and manufactured to provide maximum longevity with minimal maintenance, regardless of herd size. We at Babson Bros. Co. know that of equal importance to equipment durability, are four other points to focus on: **Cow Comfort; Cow Positioning; Operator Safety and Throughput Capabilities...**



No other milking equipment and supply company has more experience, expertise and commitment in its ability to deliver service, knowledge and merchandise. All of this contributes to the well-being of cows and the profitability of your dairy.

Congratulations To All The "DAIRY OF DISTINCTION" Award Winners

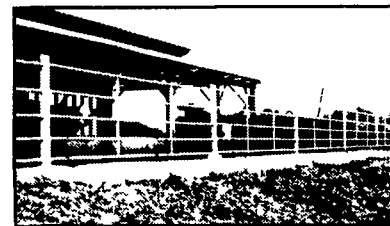


Loop Stalls

Versatile design offers generous lunge space between loop. Heavy construction with 2 3/8" high yield steel tubing with 12 gauge wall.

Gates & Fencing

Round corners for safety & strength. Constructed with 1 9 tubing with a 13 gauge wall.



Head Locks

Auto release for downed cows. Adjustable neck opening for calf to cow. Heavy 1" schedule 40 pipe for uprights.

All steel equipment is powder coated with a top grade TGIC Polyester Coating and comes with a 20 Year Rust Through Guarantee.

Cattle Slats

Heavy duty cattle slat is wet cast with a 1/2" diameter welded rebar cage. 6 1/2' thick throughout the entire slat with 1 3/4" slots. Slow cured for extra strength.



LEBANON VALLEY ENTERPRISES, INC.
Manufacturing • Powder Coating • Precast

P.O. Box 187, Myerstown, PA 17067 • (717) 866-2030