

1987 Volvo White tractor, single axle or with tag axle, conventional, 320 Detroit, good cond. \$4800. 717-776-7725

**75 Ford L800**  
Tandem Grain Truck w/20' Midwest Body & Hoist, Good Condition, **\$5,000**  
908/359-5934

1999 Chevy, 1 Ton, 4x4 Dually, LS, Custom Conversion Package, Loaded, Low Mileage, 6.5 Turbo, Diesel AT \$34,500 OBO  
**717-556-0673 Ext 24**

**91 F350 460 5 Spd., New Tires, New Paint, Runs Good \$9,800 OBO**  
Westminster, MD (410) 984-3965

**Appalachian Manufacturing, Inc.**  
330-222-2468

20,000# G.V.W. Oil Bath Axle  
10K Dual Tandem Trailers - Spring Assist Ramps  
Pintle Pull, 18x5, Dovetail ..... **\$4,750**  
Gooseneck, 20x5 ..... **\$5,000**

24' Gooseneck, 4' dovetail, 1-12,000# G.V.W., 6,000# axels w/easy lube, electric brakes, 7.50-16 tires, breakaway kit, ramps w/pressure treated deck, standard ..... 12,000 GVW **\$2,995**  
..... 14,000 GVW **\$3,195**

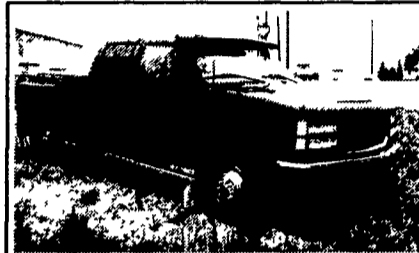
16' Car Hauler, diamond plate deck with W/D rings, self storing ramps, 7,000# G.V.W., elect brakes, both axels 82" between wheel wells, breakaway kit incl  
16' Car Trailer **\$1,495** 18' Car Trailer **\$1,645**

**We Special Build For Any Need!**  
21' Low Profile, 10,000#, axel w/easy lube, elect brakes, pressure treated deck, 10,000# G.V.W., gooseneck ..... **\$3,100**  
Bumper pull ..... **\$2,950**

**TRUCK CAPS • BED LINERS  
COMPLETE SERVICE DEPARTMENT**

**Apple Auto Sales, Inc.**

*Prewowned Cars & Trucks*  
Route 30 - Lincoln Highway East, Gap, PA 17527  
717-442-9700 • 717-299-9900 • FAX 717-442-3140  
Email contactus@appleautosales.com Web www.appleautosales.com



**1999 GMC Crew Cab Dually 4x4**  
454 V8, AT, PS, PB, PW, PL, PM, Cruise, Tilt, A/C, AM/FM Cass, 10,000 GVW, 7,700 Mi, Maroon

**1996 Dodge Ram X-Cab SLT, 318 V8, AT, PS, PB, PW, PL, PM, Cruise, Tilt, Delay, Tow Pkg, Cass, A/C, Sliding Rear Glass, Fog Lights, 24K Miles**  
**1999 Ford F-350 4 Door X-Cab, 4x4, Dually, Triton V10, 8' Bed, AT, PS, PB, PW, PL, PM, Cruise, Tilt, A/C, AM/FM Cass, 6,500 Miles**  
**1999 CHEVY 3500 CUBE TRUCK, 350 V8, AT, PS, PB, Tilt, AM/FM/Cass, A/C, Dual Tanks, 11,000 GVW 12 Ft., box w/storage (2 to choose from)**  
**1999 Dodge Ram 3500, Dually 4x4, 10' Dump, Cummins 6 Cyl, 5 Spd, PS, PB, AM/FM/CD, A/C w/Plow & Salt Spreader**  
**1999 Ford F-350 X-Cab Dually, V10 Triton / Auto O D, PS, PB, PW, PL, PM, Cruise, Tilt, Delay, AM/FM/Cass, A/C, Sliding Rear Glass, 4x4, 4-doors**  
**1999 Chevy Extended Cargo Van, 5.0 Vortec V8, AT, PS, PB, A/C 7,300 GVW**

**LIFETIME FREE INSPECTIONS • BUY & SELL**

**DELUXE PICKUP SEAT**

**\$ 379.00**

F.O.B. FACT

CALL FOR CATALOG

301-864-1079

*Emerson Seating*

BOX 283 • HYATTSVILLE, MD 20781



Volvo... call for details



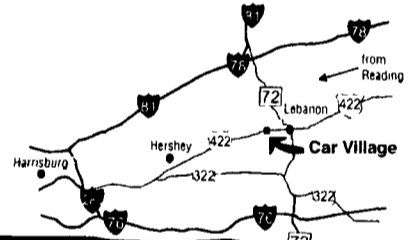
1986 Iveco 230, Cab & Chassis, Good Engine, Air Brakes **\$2,500**

**Fisher & Thompson Inc.**  
DAIRY & MILKING EQUIPMENT SALES & SERVICE  
15 Newport Rd., Leola, PA 17540  
**717-656-3307**

**Business Hours:**  
Mon.-Fri. 9 to 9;  
Sat. 9-4

2300 W. CUMBERLAND ST.  
(Rt. 422)  
LEBANON, PA 17042  
(Across From Lebanon Valley Mall)

**CAR VILLAGE**  
**HEAVY DUTY TRUCKS**



**PHONE 717-274-2000 Toll Free 1-800-650-1420**



**1 TON DIESEL 4 WHEEL DRIVE 94 FORD F350**  
Solid Front Axle, Nice Clean Truck, 7.3 Turbo Diesel, AT, A/C, Limited Slip 4:10 Gear, Aluminum Wheels, Very Nice Truck & Only \$17,900



**E-Z DUMPER, 93 FORD F250 4X4,**  
Get a Pickup and a Dump Truck in 1.7.3 Diesel AT, A/C, Heavy Duty 3/4 Ton, Only 64,000 Miles, \$14,900



**SOLID FRONT AXLE 97 FORD F350 XL**  
4 Wheel Drive, Powerstroke Turbo Diesel, AT, A/C, Vinyl Seat & Floor, Great Work Truck, Lock Out Hubs, Heavy Duty 1 Ton, Nice Truck, Great Price Only \$22,900



**CHASSIS CAB 95 CHEVY HD 3500**  
Ready For The Big Load, 19" Rubber, Heavy 15000 GVW Only 46,000 Miles, 454, V8, 5 Spd, A/C, Long 161 W.B., 84" C A, Very Nice Tk Only \$16,900



**ONLY 15,000 MILES, 4X4 DUALLY, 95 DODGE 3500.** You Gotta See & Drive This One Cummins Turbo Diesel, AT, A/C, Heavy Duty Tow Pkg, Dana Axles, Heavy Duty 10,500 GVW



**CREW CAB DUALLY 97 FORD F350 XLT**  
Nice Tk, Only 45,000 Miles, Powerstroke Turbo Diesel, AT, A/C, Power Everything, Tow Pkg, Limited Slip Axle, Nice, Comfortable Interior, Aluminum Wheels



**450 CHASSIS CAB, 99 FORD SUPER DUTY**  
Heavy 15,000 GVW Powerstroke Diesel, 6 Sp Trans, Loaded XLT, A/C, 19.5 Rubber, Short 141 W.B., 60" C A, Hard To Find, Only 20,000 Miles



**4x4 MECHANICS TRUCK**  
**89 CHEVY K2500 SUPER CAB**  
Runs Good, Looks Good, Local 2 Owner, 350 V8, AT, No Rust \$10,900



**PICTURE PERFECT 94 FORD F350 SUPER CAB**  
DUALY Centurion Conversion, The Nicest Looking and Driving Truck You Can Find! Powerstroke Turbo Diesel, H D 5 Spd, A/C, Tilt, Cruise, Gorgeous Custom Paint, Chrome Simulators, Chrome Bumper Guard, Tinted Glass, H D Tow Pkg, 4 10 Gears



**1 TON DIESEL, 99 FORD F350 4X4**  
Like New, Only 16,000 Miles, New Tk Warranty, Powerstroke, Turbo Diesel, AT, A/C, Comfortable, 40/20/40 Seat, Loaded XLT, Solid Front Axle, Aluminum Wheels



**ONLY 19,000 MILES, 97 FORD F250 SUPER CAB**  
SHORTBED, 4X4 Absolutely Perfect Like New 6 Ft Bed, Loaded XLT, Powerstroke Turbo Diesel, 5 Sp Trans, A/C, All Power Equipment, Trailer Tow Pkg, Aluminum Wheels & Lots More, Must See & Drive



**BIG BAD DODGE**  
**97 DODGE 2500 SUPER CAB 4X4**  
Probably The Nicest Anywhere, Only 42,000 Miles, Cummins Turbo Diesel, AT, A/C, Chrome Wheels, Tow Pkg & Lots More, Check It Out



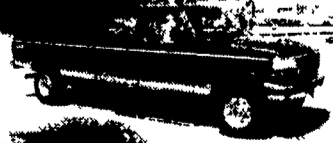
**GOOSENECK HAULER, 95 FORD F350 4 DOOR 4X4,**  
All Ready To Go, Gooseneck & Class 3 Hitches, Powerstroke Turbo Diesel, 5 Sp, A/C, 4, 10 Gears, Frame Mount Tool Box, Only 37,000 Miles, Come See & Drive



**4X4 FLATBED, 98 DODGE 3500**  
9 Foot Flatbed, Removeable Sides, L-Pak Tool Box, Cummins Turbo Diesel, Auto, New Tires, Put It To Work



**MECHANICS BODY 2 WHEEL DRIVE 97 FORD F350**  
Only 34,000 Miles, Nice & Well Maintained, Powerstroke Turbo Diesel, 5 Sp, A/C, 9 Ft Body



**4 DOOR 4X4 PERFECT 97 FORD F350 XLT**  
The Nicest 30,000 Mile Tk Anywhere, Powerstroke Turbo Diesel, AT, A/C, Tilt, Cruise, Power Everything, Tow Pkg, Aluminum Wheels, A Must See & Drive



**ALUMINUM WALK-IN 94 CHEVY**  
Very Clean, Almost New, Only 36,000 Miles, 350 V8, AT, A/C, Roll Up Rear Door, Runs, Drives & Looks Great \$16,900



**5 SP. POWERSTROKE 97 FORD F250 4x4**  
Heavy Duty 3/4 Ton, Loaded XLT, Only 41,000 Miles, Clean Miles, Powerstroke Turbo Diesel, 5 Sp., A/C, Aluminum Wheels, A Real Good Looker



**5 SP POWERSTROKE 4 WHEEL DRIVE, 95 FORD F250 XLT**  
A Nice One, Only 59,000 Clean Miles, Powerstroke Turbo Diesel 5 Sp, A/C, Tilt, Cruise, 40/20/40 Seat, Limited Slip Gear



**RARE FIND, GOOD FIND, 4 WHEEL DRIVE 92 FORD E-350 CUBE VAN,** Only 19,000 Nice Miles, 351 V8 Auto & A/C, 14 Foot Box with Removeable Shelves, Great For Contractor



**GAS 1 TON, 96 FORD F350 4X4**  
Only 47,000 Miles, 351 FI, V8, Auto, A/C, Heavy 9000 GVW



**4X4 STAKE DUMP 96 GMC 3500**  
12 Foot Body, 350 V8, AT, A/C, Limited Slip Axle, Very Clean Truck And Waiting For You. Only 40,000 Miles.



**5 SP. CLUB CAB, 97 DODGE 2500 4 WHEEL DRIVE** Looks Like New, Only 33,000 Miles, Cummins Turbo Diesel, 5 Sp., A/C, Dana Axles, Tow Pkg, All The Good Stuff, The Nicest One Anywhere



**4x4 MECHANICS TRUCK 97 FORD F350 XL**  
Powerstroke Turbo Diesel, Only 39,000 Clean Miles, Stahl Body, Ladder Racks, Tow Pkg, Put It To Work



**4x4 CUMMINS DIESEL 97 DODGE 2500**  
Heavy Duty 3/4 Ton Awesome, Impressive Cummins Diesel, AT, A/C, Power Everything, Chrome Wheels, Tow Pkg, 4 10 Limited Slip Gear, A Must See