

7511 Allentown Blvd.
Harrisburg, PA 17112

**75 TRUCKS
IN STOCK**

**AFFORDABLE
CARS AND TRUCKS, INC.**

"You Gotta Believe!!"

717-652-1925

FAX 717-652-4888

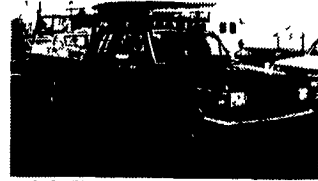
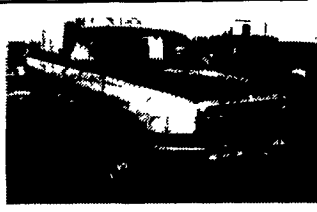
www.affordablecarandtruck.com

Exit 27, Rt. 81; Rt. 22 East of Harrisburg; 3 Miles North of Hershey



**90 Chev
Suburban 4x4**
Barn Doors, Dual
A/C, 8-Pass., Super
Nice Vehicle
All 100K Mi.,
4-Avail. 88-91
\$7,500-\$10,000

**95 Dodge Ram
2500**
Cummins Turbo
Diesel, 4x4, SLT
Laramie, AT, A/C,
Most Options,
111K Miles,
Excellent Shape
\$15,495



**90 Ford F250 4x4 XLT
Ext. Cab**
7.3 International Diesel, Only 116K,
5 Speed, A/C & Full Power, Mint
Cond., Ladder Racks Sold Separately
\$10,995



93 Chev 2500 H.D.
Silverado, 4x4, 350, AT,
8,600 G V W A/C, Most Options,
Mint Cond., 108K Mi
\$10,995



91 Ford F250 XLT Lariat
4x4, 351, AT, AC & Loaded Up,
Black & Beautiful, Mint Cond Truck,
100K Mi
\$8,995



95 Chev 1500 Silverado 4x4
Choose from 350 V8, Loaded **\$12,995**
or Economical V6, Loaded **\$8,995**
Both Super Clean, Low Miles,
One Owners!



86 Ford F250 XLT
4x4, H.D 8600 GVW, 1-Owner, New
Jasper 351 V8, AT, 2-Tone Paint,
Western Angle Plow, Mint Cond Look
\$7,495



88 FORD F350 4x4
9,000 GVW, 460 V8, AT, Very Clean
Truck, Good Miles, Work Vehicle
\$6,995



94 Chev 1500 Silverado
4x4, Ext. Longbed, All Black, 350 +
Loaded, Extra Clean, 100K Mi
\$12,995



**95 Ford F250 XL 4x4, 8600
GVW, Extra Nice Trucks, Choose From
5-Spd or Automatic,
Fully Loaded, Only 78,000 Miles
\$10,995 & Up**



87 Ford F250 XLT Lariat
4x4, Super Cab, 5.8 Gas,
Fully Loaded, AT, A/C, PW T,
More, Mint Condition, 100k Mi
\$7,995

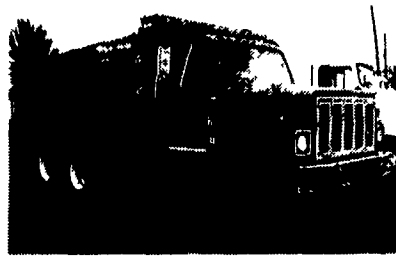
HOLLINGER MACK, INC.



126 KELLER AVENUE • P.O. BOX 4455
LANCASTER, PA. 17604

PHONE 717-393-3633

FAX - 717-393-2042



**1982 International
F2554**
DT 466 Eng, 13 Speed,
16 #40 #Axles 14' Steel
Dump - CLEAN

**1985 MACK
Midliner**

Cab & Chassis,
180 HP, 5 Spd.,
28,540# GVW, 148" C.A.,
Only 112,000 Miles



1974 MACK R-Model
237, 5-Speed, 169" W.B. -
Cast Spoke 101220
Make Offer!



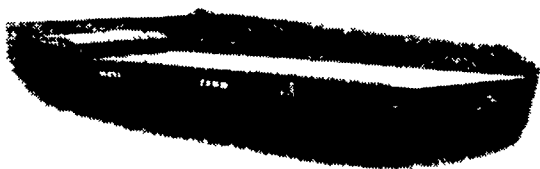
**(2) MACK
SUPERLINER
TRACTORS**
1987, 1988, E6350,
9 Speed, 38,000 Mack
Axles on Neway Air Ride,
Good Runners

NORTH EAST ENTERPRISES

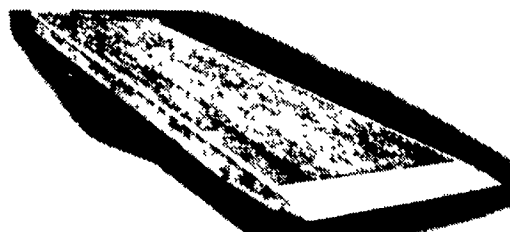
**WORLD'S LARGEST STOCKING
LANDOLL And TRAIL-EZE DEALER!
SALES - SERVICE - PARTS - RENTALS**



Stop In
& See the New
Limited Edition
Fontaine
Specialized
LP50



**New 2000 Landoll 660A 48' & 53'
Traveling Axle Trailer, Many Different
Options In Stock!**



**2000 Trail-Eze 20 & 25 Ton Heavy
Duty Tilt Deck Trailer, Pintle Hitch,
Air Brakes, In Stock Now!!**



**2000 Trail-Eze 10 Ton Ramp Trailer,
24' Deck (19' Flat + 5' Beavertail),
Electric Brakes, Pintle Hitch,
In Stock!**



**2000 Trail-Eze 20 Ton Sliding Axle -
Tilt Deck Trailer, Pintle Hitch Trailer.
30' Deck, Air Brakes, In Stock!!**



**New "2000" Landoll 323AG-48
Detachable 35 Ton Air Ride, 28x102"
Drop Side with 24" Pull-Out Side
Extensions, Self-Contained.**



**New Fontaine Specialized 35, 50 &
55 Ton Detachable Gooseneck.
Many Options Available.
Call For Your Best Price.**

CALL TOLL FREE 1-877-526-3655

ASK FOR WAYNE BROWN
E-MAIL: wayne@neent.com