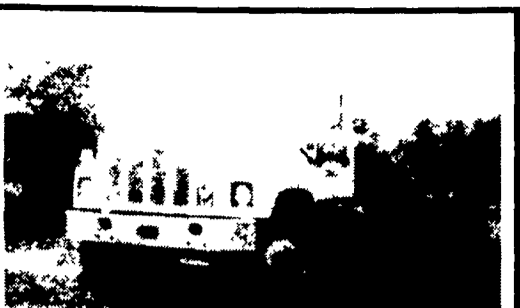


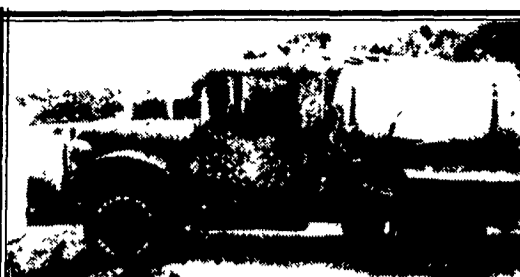
1968 Mack 10 Wheels w/  
110 Prentice Ldr Mounted  
in Rear. \$6500.  
610-286-6054

1996 Freightler low mileage,  
17' heated alum J&J  
body, 72" sides, roll tarp,  
24x5 alum bub wheels.  
Ravens air ride dump  
trailer, 38x38 spread axle,  
66" sides, roll tarp, coal  
chute, swing gate, bud  
wheels. Ravens air dump  
trailer 36x36, new floor,  
roll tarp. Call  
717-627-7259.

96 Hillsboro gooseneck  
trailer, 6' deck, 28' long  
w/beavertail, tandem  
axle dual wheels w/elect.  
brakes, very good cond.  
610-932-8999.



1993 Int. 2554 Tandem Axle Cab and  
Chassis, DT 466-270 HP, 40,000# Rear  
Axles, P/S, Working A/C, AM/FM, Will Take  
22'-26' Body, Excellent Condition. \$22,500.  
**301/829-0271**



1954 Dodge M-37 Converted to Field Sprayer, 300  
Gal AL Tank, L-3000 Blue Wheel Drive Pump, 28'  
Spray Width, 35,000 M, Power Steering Kit.  
**\$3,500**  
**717-529-2126**



1984 GMC Top Kick 7000,  
3208 Cat Diesel, 32,200 GVW  
**\$3,500**

**717/354-4966**

**Great Selection!**  
**Specializing In**  
**Late Model Vans**

**3/4 Four Way**  
**Auto Sales**

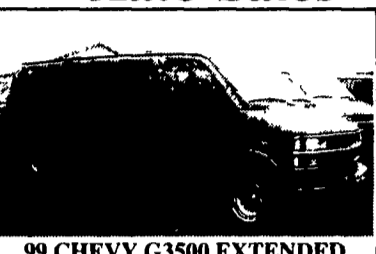
770 W. Main New Holland, PA 17557  
**(717) 354-3199**  
**1-877-999-VANS (8267)**



**98 Chevy Astro LT, 7 Passenger,**  
4.3 V6, Dual A/C & Heat, Privacy  
Glass, Tilt, Cruise, PW, PL, Pseat,  
Cassette, CD, Green & Silver,  
10K Mi., #3496



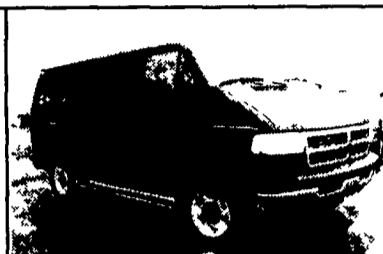
**97 CHEVY G2500 EXPRESS LS,**  
12 Passenger, 5.7 V8, Dual A/C & Heat,  
Privacy Glass, Tilt, Cruise, PW, PL,  
Keyless, Pseat, P Mirrors, Cassette,  
Hinged Doors, Black, 25K Mi., #3495



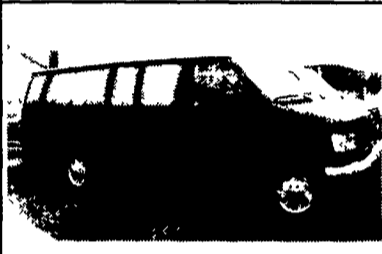
**99 CHEVY G3500 EXTENDED**  
**EXPRESS LS, 15 Passenger, 5.7 V8,**  
Dual A/C & Heat, Privacy Glass,  
Tilt, Cruise, PW, PL, P Mirrors,  
Cassette, Blue, 35K Mi.,  
#3475



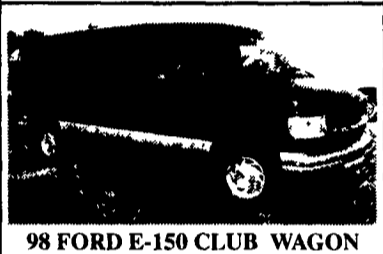
**98 FORD E150 CLUB WAGON XLT,**  
8 Passenger, 4.6 Triton V8, Dual A/C &  
Heat, Privacy Glass, Tilt, Cruise, PW,  
PL, Keyless, P Seat, P Mirrors,  
Cassette, Tow Package, Alloys, Blue,  
43K Mi., #3468



**97 DODGE B1500 RAM WAGON**  
SLT, 8 Passenger, 5.2 V8, A/C, Privacy  
Glass, Tilt, Cruise, PW, PL, P Seat,  
Cassette, Black, 41K Mi., #3410



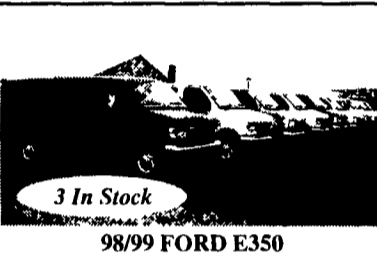
**96 FORD E-350 SUPER CLUB**  
**WAGON XLT, 15 Passenger, 5.8 EFI**  
V8, Dual A/C & Heat, Privacy Glass,  
Tilt, Cruise, PW, PL, P Mirrors,  
Cassette, Black, 52K Mi., #3479



**98 FORD E-150 CLUB WAGON**  
**CHATEAU, 7 Passenger, 4.6 Triton**  
V8, Dual AC & Heat, Privacy Glass,  
Tilt, Cruise, PW, PL, Pseat, P Mirrors,  
Cassette, Quad Captains, Green &  
Silver, 23K Mi., #3432



**99 DODGE B3500 MAXI RAM**  
**WAGON, 15 Passenger, 5.4 Magnum**  
V8, Dual A/C & Heat, Privacy Glass,  
Tilt, Cruise, PW, PL, Keyless,  
P Mirrors, Cassette, Rear Step  
Bumper, Burgundy, 30K Mi., #3481



3 In Stock

**98/99 FORD E350**  
**SUPER CLUB WAGON,**  
15 Passenger, V8/V10,  
Dual A/C & Heat,  
Loaded!  
27-48K Mi



7.3 Power Stroke Diesel

**97 FORD E-350 ECONOLINE**  
7.3 Powerstroke Diesel, A/C,  
9500 GVW, Step Bumper, White,  
25 K Mi.,  
#3407

**BRENNER**

**PHONE: 717-232-4271**

**www.brennerdodge.com Fax: 717-233-8221**

**RON JACKMAN**

Business Link Account Manager

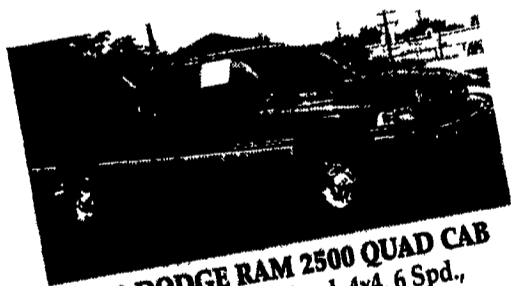
**The New Commercial Sales Group**

**Harrisburg's Only BusinessLink Dealer**

*"Saving the Small Business  
Owner Time, Money & Hassles"*

**RAY MARINO**

Business Link Account Manager



**2001 DODGE RAM 2500 QUAD CAB**  
SLT, Cummins Diesel, 4x4, 6 Spd.,  
Most Options



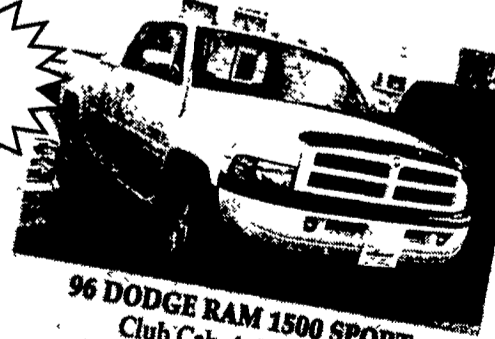
**99 DODGE RAM 2500 SPORT**  
AT, V8, 4x4



**2000 DODGE 3500 4x4**  
Stahl Grand Challenger Utility Body,  
AT, A/C



**2001 DODGE RAM 3500 CAB & CHASSIS**  
4x4 & 4x2 In Stock (1 Diesel, 3 Gas)  
Your Choice of Body



**96 DODGE RAM 1500 SPORT**  
Club Cab, 4x4, AT, V8,  
All Decked Out, 70,000 Miles

