

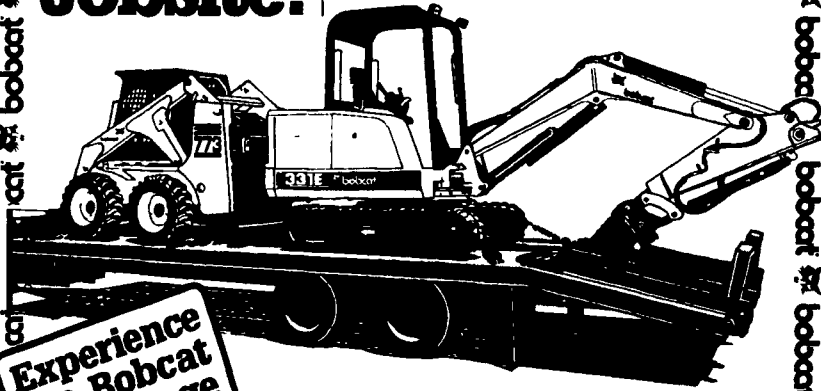
**1A CONSTRUCTION EQUIPMENT**

**SALES • SERVICE • PARTS • RENTAL**

**Easy to Take to Your Jobsite!**

**The Bobcat® System Is Easy to Transport!**

The Bobcat loader/excavator combination can be easily transported on a conventional tow rig. At the jobsite, use the loader and excavator as a team on the same job, or work each machine separately at different sites!



**Experience the Bobcat Advantage**

**ASK ABOUT 0% FINANCING!**

Your Bobcat Headquarters:

**Bobcat of Reading**

Division of Reading Kubota  
5045 Pottsville Pike, Reading, PA 19605  
Along Rt. 61, 3 miles north of Reading

Call Tracy for information on Bobcat equipment and special financing rates available for limited time

Phone 610-926-2441

Mobile 610-207-4909



bobcat bobcat

bobcat bobcat

**FORKLIFTS**

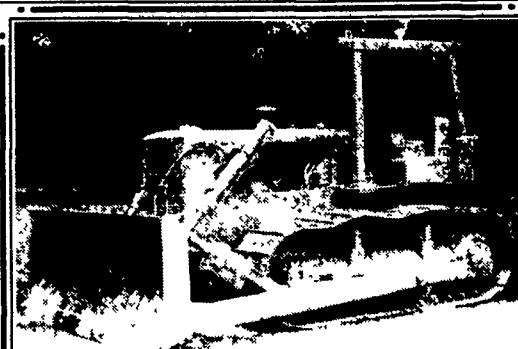
2,000 TO 15,000 LB.  
\$2,000 & upwards  
GAS/LP-DIESEL-ELECTRIC

Cushion-Pneumatic-Rough Terrain  
New Komatsu Forklifts Available  
**PA INDUSTRIAL EQUIPMENT**  
(610) 369-9778



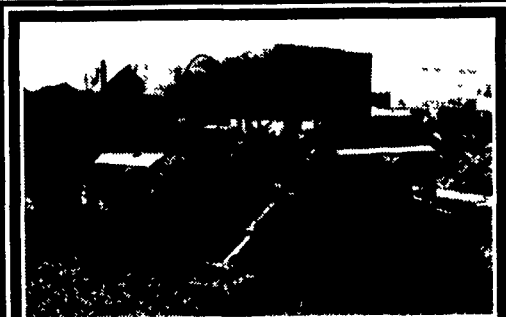
**Kato HD770 Hydraulic Excavator \$15,000**

Heavy Equipment Loader Parts, Inc.  
10070 Allentown Blvd, Grantville, PA 17028  
No Sunday Calls (717) 469-0039

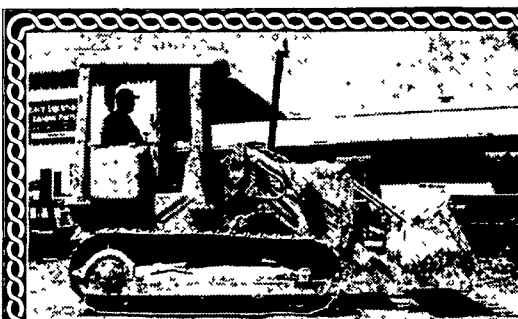


**CAT D6-C**

PS Trans., UC-85%, Has Tilt, New Bottom Rollers, Sprockets, Rebuilt Idlers, Pins & Bushings turned, Exc. Cond.  
**\$19,500 - 856-769-3183**



**Gradall 4x4**  
Good Cond., Rough Terrain, 5Tcap., 34' Reach, 1,780 hrs.  
**\$30,000 firm**  
**610-754-6400**



**Cat 941/951 CRL Loader**  
5 to Choose from starting at **\$15,000** Sale Or Rent

Heavy Equipment Loader Parts, Inc.  
10070 Allentown Blvd, Grantville, PA 17028  
No Sunday Calls (717) 469-0039



**1983 Case 850B Crawler Loader**  
ROPS, Good Undercarriage, Very Good Condition  
(301) 371-3300/7221  
www.midmd.com



**1995 Cat 953B**  
Cab, GP Backhoe/Earth, Fr, 4 Way Hydro, Ready  
(301) 371-3300/7221  
www.midmd.com



**CAT 951 Track Loader**  
Under Carriage Fair, Noise In Engine  
**\$7,500 Or Best Offer**  
Call Ray **856-424-6300**

**Forklifts**  
New and reconditioned For Sale or Rent  
Heavy duty fork extensions  
Call For Prices  
Don't trade or throw out that old engine. Have it overhauled for a fraction of the cost of new! All work is guaranteed.

**AS IS SPECIALS**  
5,000 lb. Cat Cushion Tire.....**\$1,950**  
5,000 lb. Clark Cushion Tire....**\$1,950**

Cat E120B Excavator, 2 To Choose From **\$27,000**

92 Ford 555D Backhoe, 3100 Hrs **\$18,000**

88 JD 755B Crawler Loader, Rebuilt Hydros EROPS Good UC **\$27,000**

96 Samsung MX352-LX Excavator, 60' Bucket, 82,000 Lbs **\$48,000**

Cat 977K Crawler Loader, EROPS GP Bucket **\$19,000**

87 White Volvo fuel & lube truck, w/new lube body, 850 gal diesel tank 4 bulk product tanks w/pumps, 165 gal oil recovery system, 8 product reels w/dispensers, 11hp air compressor **\$26,500**

**LOCAL CONTRACTOR BUYOUT**  
Cat 943 Crawler Loader, EROPS, Good UC, Recent Eng Rebuild  
96 Eager Beaver 20-ton Tag-Along Trailer  
1990 Case 850K Backhoe, 4x4, Ext Hoe  
1997 Case 1840 Skid Loader, Forks Snow Blower, Hyd Hammer Tracks & Trailer  
Ford L8000 Single Axle Dump Truck, Cat Dsl

- JD 750B Dozer, Straight Blade w/Tilt **\$27,000**
- (2) JD 670A Graders, 12' Blades, Good Cond **Starting at \$19,000**
- Cat CB224 Tandem Asphalt Roller **\$6,500**
- JD 450G Dozer, 6 Way Blade **\$26,000**
- Cat 966D Wheel Loader, Good Rubber 4 Yd Bucket **Call**
- 95 Hitachi EX200-LC, AC, Good Condition **\$55,000**
- Hitachi UHO83-LC, 42,000 Lb, No Bucket Rough But Runs Great **\$11,500**
- Int. 150 Crawler Loader, Rough Rough! **\$3,500**
- Cat 951 Crawler Loader, new chain & sprockets excellent condition **\$17,000**
- Stone Wolfpack 2500 double drum asphalt roller **\$3,500**
- 86 JD 450E Dozer, 6-Way Good UC ROPS **\$20,000**
- Case 450 Dozer, 6 Way Weak UC **\$13,000**
- JD 755 Crawler Loader, ROPS Rebuilt Hydros **\$19,500**
- Marklift 30' Man Lift, 4x4, Good Cond **\$9,800**

**Weaver's Equipment Sales**  
RD#1, Box 418, Milton, Pa. 17847  
Phone: 570-523-9598

**BUYING & SELLING USED CONSTRUCTION EQUIPMENT, NEW & USED PARTS & ATTACHMENTS**  
CALL  
**H.E.L.P., INC.**  
(717) 469-0039  
(717) 469-7679 FAX

Specializing In Caterpillar Parts also available for Case, Fiat, IHC, Komatsu, Deere, Etc.

**ALL PARTS AT DISCOUNT PRICES!**  
**\*\*PARTS LOCATING SERVICES\*\***  
Call Us For Your Parts & Service Manual Needs

**HEAVY EQUIPMENT LOADER PARTS, INC.**  
10070 Allentown Blvd, Grantville, PA 17028

**Pneumatic Tire**  
4000 lb. CAT 2 Stage, LP Gas..... **\$4,995**  
1995 Hyster 4,000 lb., 3 Stage, Side Shifter, Must See..... **\$11,500 \$10,500**  
1995 6,000 lb. Komatsu, 3 Stage, Reconditioned  
1995 Toyota 5,000 lb., 3 Stage, 6,500 Hrs..... **\$13,500**  
6000 lb. Hyster Diesel, 3 Spd., Oil Clutch, 3 Stage Mast..... **\$8,500**

**Cushion Tire**  
Yale 8,000 lb., 18 ft. Lift, Side Shifter, LPG..... **\$6,950**  
Yale 4,000 lb., 3 Stage, LPG..... **\$3,900 \$3,200**  
1990 Clark, 4,000 lb., 3 Stage, LPG..... **\$6,950**  
1993 Nissan 8,000 lb., 2 Stage, Full Free Lift, 4 Way Hydro..... **\$10,500**  
1995 Clark 8,000 lb., 181" Lift, Side Shifter, Reconditioned..... **\$13,900**

**Electric**  
1991 Yale 6,000 lb., 3 Stage, Cushion Tire..... **\$8,500**  
1992 Clark 3,000 lb., 3 Stage, Side Shifter, A-1 Condition..... **\$5,800 \$5,500**  
1995 Clark Pallet Jacks..... **\$2,950 \$2,400**

**Skid Loader & Forklift Rentals**  
**SAM'S MECHANICAL SERVICE**  
5917 Plank Rd. Narvon, PA 17555  
For Service Calls 717-442-9334