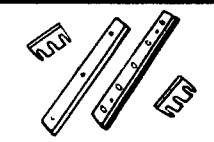


**1 FARM EQUIPMENT**

**FORAGE KNIVES**



Call Weaver  
Where Quality  
Is Not A Question!  
Weaver Distributing  
1-800-Weaver-D  
Fredericksburg, PA

**"No-JumPin"**



Farmers! Check out  
this new hitch pin.  
Fast, Easy, Secure!  
7/8" diameter  
\$13.95 each  
+ \$3.99 UPS  
3 for \$39 Free UPS  
Weaver  
Distributing  
1-800-Weaver-D

**Cub Cadet** Power Equipment  
**HESSTON** Nobody knows hay like  
**KUBOTA** Nothing like it on earth™  
**NEW IDEA**

**USED EQUIPMENT**  
Gooseneck Hyd Rake Hitch  
NH 411 Discbine, 1000 RPM. Like New  
NH 277 Baler w/Thrower  
Bushhog 126R 10' Pull Type  
NH 617 9' 3pt Disc Mower, 2 Years  
Kuhn GMD 700 9' 3 Pt Disc Mower

**LAWN & GARDEN**  
Steiner 230 Dsl, 65 hrs., 72"  
Cub Cadet 2140 14hp, 42"  
Cub Cadet 1864 46" w/Bagger  
Kubota F2100 60" High Dump Bagger  
Kubota L210, 21hp  
Kubota B8200 4WD w/Bush Hog Loader,  
400 Hrs.  
Ferris 25hp, 61" Zero Turn, 180 Hrs  
Woods 6215, 21hp, Diesel, 61"  
JD 425, 22hp, 60"  
JD 935 72", 60 Hrs, w/Trac Vac  
Kubota B2150 HSD w/Loader 850 hrs  
3 pt. Wood Saw

**STOLTZFUS FARM SERVICE**  
Cochranville, PA 610-593-2407

**Top Producers Choose Knight!  
Congratulations to the La-Foster Farm**

Terry and Gerald Foster are very proud of their record-breaking cow, Lucy, and rightly so. She produced 75,260 pounds of milk in her last lactation. They are also pleased with their Knight Reel Auggie® mixers, which, combined with the Foster's excellent management practices, have propelled the La-Foster herd average to the #1 milk production status in North Carolina. There is no comparison to the complete, palatable blend from a Knight Reel Auggie, with its patented reel and auger blending combination. Why else would the La-Foster Farm choose only Knight to feed their record-setting herd?



Pictured are Terry and Gerald Foster with their Knight dealer, Lewis Harrison

**Reel Auggie = Results**



Brodhead, WI • Phone 608-897-2131 • Fax 608-897-2561  
Greeley, CO • Phone 970-351-0444 • Fax 970-351-7499  
www.knightmfg.com

World-Wide Leader in TMR Mixers

- USED EQUIPMENT**
- Knight 3015 Stationary w/Scales, 150 Cu Ft Mixing Capacity, 1 Yr Old.
  - VD Lagoon Pump, Demo
  - VD Slinger Spreader, 3300 gal. tank
  - 3 Pt Lagoon Pump, Rent or Sale
  - Rissler 190 Cu. Ft. Mixer
  - 190 cu ft Rissler Stationary
  - Demo Unit Mixer In Stock Call For A FREE Demonstration

**MILLCREEK FENCE & FARM SYSTEMS**

2285 Old Philadelphia Pike  
Lancaster, PA 17602 - (717) 396-8987

**GOT WOOD?**



**WE HAVE THE FURNACE!**

- All stainless steel construction
- No smoke, ashes or wood trash in your home
- Burns wood up to 16" diameter and 30" long
- 12 hour burn
- Locate it 10 to 100 feet from your home
- Heats home and household hot water
- 10-year warranty
- Connects to your existing central duct or hydronic system
- Shaker grates



\*Built at the same location for 24 years. (since 1976)

100,000 btu furnace.....\$2,650.00

**Williamson Enterprises**  
11051 Hwy 16 E.  
Philadelphia, MS 39350

For dealers and more info: Toll free: 877/606-3113

**CHARLES S. SNYDER, INC.**

RR3, BOX 109  
1 MILE EAST OF RT. 309 ON RT. 443  
TAMAQUA, PA 18252 PHONE: 570-386-5945  
MON. THRU FRI. 8:00 A.M. TO 5:00 P.M.  
FAX 570-386-4080  
SAT. 8:00 AM TO 12:00



**SHIP PARTS UPS DAILY**

WEB SITE- www.cssnyder.com • EMAIL cssnyder@ptd.net

**TRACTORS**

Tag#	Make	Model	Year	Hours	PTO HP	Description
11034	Ford	8N	1952	N/A		Tractor
10329	Ford	6600	1976	4203	70	W/Cab 2 Remotes Weights Front & Back
10450	Ford	3400	1965	N/A	35	Utility Gas Tractor w/Loader Ind. Type
10855	NH	8670	1996	535	145	4WD Cab, Super Steer
10949	NH	6635	1997	57	76	4WD Cab 24x12 Dual Power w/Loader
10971	Ford	6600	1977	3950	70	2WD, Dual Power, 2 Remotes

**INDUSTRIAL TRACTORS**

Tag#	Make	Model	Year	Hours	Description
11036	NH	555E	1997	1923	TLB 4WD Cab Std. Hoe
11003	IH	500C	1973	2184	Track Loader Diesel
10901	JD	2010	1962	N/A	TLB
10821	Case	W14H	1973	3142	Wheel Loader w/Clam Bucket
10794	JD	310	1974	6719	TLB 4-Post ROPS 2 Lever
10762	Ford	801SOS	1959	2394	TLB Gas
10726	NH	655E	1998	456	4WD Cab Ext Hoe 2 Lever
10668	Case	580D	1980	4032	TLB Cab 4WD Ext. Hoe

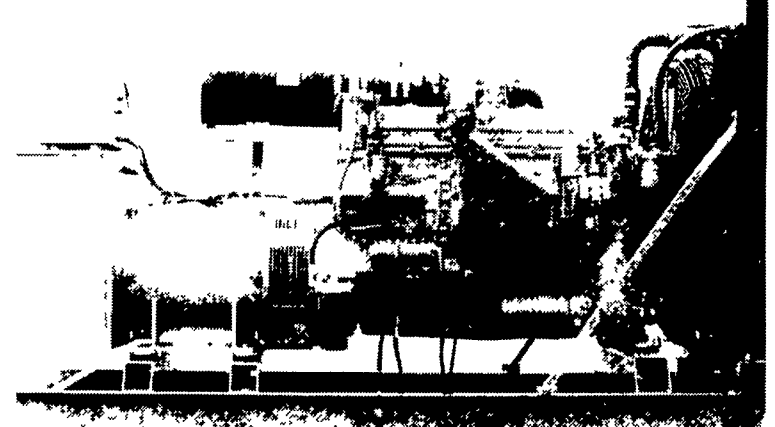
**SKID LOADERS**

Tag#	Make	Model	Year	Hours	Description
11040	Thomas	233 HD	1994	1544	70" LP Bucket
10942	NH	LX565	1996	2709	W/Bucket & Weights
10937	NH	L778	1977	2787	Gas Water Cooled Engine
10931	NH	L785	1988	2616	Skid Loader
10926	NH	L785	1990	3068	No Bucket
10846	Clark Forklift	Y40	N/A	2116	Propane 48" Forks
10800	Thomas	103	1989	420	Kubota Engine 60" Bucket & Pallet Forks
10783	NH	L555	1987	2921	w/Bucket
10616	Ford	CL25	1995	2581	Diesel w/Ford Engine
10554	Commander	C8000	N/A	1114	Rubber Track Crawler

**HAYBINES**

Tag#	Make	Model	Description
11041	NH	489	Standard Guard Haybine
11015	NH	408	540 PTO Discbine
10996	NH	492	Standard Guard w/Hyd Tongue Swing
10952	NH	415	1000 PTO w/Swivel Hitch
10741	NH	499	Stub Guard Hydro Swing
10447	JD	1600	Stub Guard Hydro Swing 12'
10424	NH	469	Standard Guard Bad Roll
10443	NH	411	1000 PTO

**GENERATORS**



**MARTIN ELECTRIC PLANTS • Manufacturer of:**  
DIESEL, LP GAS, NATURAL GAS, PTO  
Automatic & Manual Start Systems  
**USED UNITS ALSO AVAILABLE**

Call Us For All Your Generator Needs!

**MARTIN ELECTRIC PLANTS**

280 Pleasant Valley Rd., Ephrata, PA 17522-8620  
800-713-7968  
Tel: 717-733-7968 Fax: 717-733-1981