

FARM EQUIPMENT

1211 Sunflower disc rock flex 13', exc, \$6,000. IH 4500 field cultivator, 13', exc, \$1,350. 717-776-4261.

Save money on discs. All Krause discs along with all tillage, priced to sell. Save! Prices gladly quoted over phone. Zeisloff Eq. (Bloomsburg, PA) 800-919-3322.

IH 5488 2WD, weights, duals, 4000 hrs, exceptional cond. \$24,000 firm. 540 PTO available. Produces 540 PTO RPM at 1800 eng RPM. Installs in less than 15 min. Serious inquiries only. 724-527-5542

Large selection of NI parts books & service manuals for most all equip. 717-867-2050

Vermeer 504L silage balers w/net wrap & monitors, 1998 special priced; new bale wrappers. C W Neiderhiser Sales, 724-423-4076 or 800-715-5586.

Inf. Farmall 656 hydro dsl tractor, cab w/full windshield, \$6500; NH 268 baler, no kicker, \$795; Inf. wheel rake w/new tires, \$400; farm wagon w/taillgate, 700:20 tires, \$400. 570/833-4930.

JD 3970 chopper with late style kernel processor, very good condition \$14,000. 2 row JD corn head \$1,600. Horning Mfg., 717-445-9317.

JD 444 corn head, ex. shape, \$2500. IH 56 4R planter, \$400. All shed kept. 302-875-7764

JD 9400 Combine 677 separator hours, 1005 engine hours. Dealer serviced. Never rained on or washed. JD 920 Flexhead, JD 643 6N Cornhead. Both heads painted. 410-778-2389.

MF 236 Front End Loader almost new. \$3,000. 610-933-0991

Looking for F8 Danuser post hole digger w/12 & 30" augers. 410-885-3460.

MF 1010 compact tractor, 4WD, gear drive, turf tires, w/attachmts, 625 hrs \$6800 neg. 814-345-4118.

Farmall Cub, Bewly Mower, Sickle Bar Mower, Snow Plow, Quik Hitch, Disc, Snow, Cultivators, Corn Planter Tire Chains, Rins Well. \$3,750 570-455-7963

JD 2600 4-Bottom, Semi-Mount, Plastic & Steel Mold Boards, Variable Width, Very Good Cond., \$2,000 716-595-3210

NI 709 4x4, 717 combine, 713S, 740 feed house. 570/437-2067.

Peaque 710 tedder, excellent, \$1550; Farmall MD, \$2000 OBO; Int. 55 10-tooth pull type chisel plow, \$1500. 610-562-4464.

WANTED TO BUY: Scrap metal. Highest price paid. 717-284-2800 Lancaster Co.

NI corn picker, wide row, w/12R husking bed, excellent condition, \$3500. 717/266-7039.

Sunflower 7 shank coultter chisle, model 4212, like new cond, \$890.0. 717-653-5359

Hesston 2-150 Forage Harvester, 2R Corn Head & Hay Head Exc Cond., Asking \$4500/obo; 84 GMC 7000 Truck, 366 Eng, Disc Brakes, Good Tires & Frame \$1500/obo. 717-935-2621

Farmall Cub w/fast hitch & belly mower, \$2150; Farmall Cub w/belly mower & hyd., \$2150; Farmall Super M w/PS, \$2975; Ford 515 w/loader & 3pt, \$8900. 610-562-4464.

Skid loader tires & wheels mounted, foam filled, 12-16.5, heavy wall, 60% tread, 8 bolt wheel, set of 4, \$900. 717/938-6568.

GT 370 PTO Grain Dryer \$2800; JD 215 Flex Head, Field Ready \$2600; AC 333 6x30 No-Til Air Planter, Corn & Beans, One Owner \$3800. York County 717-229-2346

JD 4440 cab, A/C, front & rear wts, 4700 hrs, PS, extra nice. 610-589-5763.

BOOM MOWERS - 4 each Landpride RCP2560, 12' reach, 5' deck, 3 are new. 301-662-1127 8AM-5PM

FORKLIFTS: Direct wholesale liquidation. Must sell. Many makes. For pictures & listing visit. www.bestbuyforklifts.com Call J.R. 1-888-440-LIFT

WANT: Case 300 tractors any condition. E-mail: jebstuart@mindspring.com or 770-490-1579.

JD 7400 4WD cab, hi clearance, power quad trans, warr until 10/01, \$29,500 obo. 717-445-6156

NH 1220 16HP, 4x4 w/Ldr & 72" Mid-Mount Mower, P/S 3PTH, 120-Hrs Like New! \$13,200

NI 2RN Picker, Late Md 8-Roll Bed, Shed Kept. Call 7:30 A.M - 12:30 P.M 717-949-3769

JD 820 1952 Pony, rubber all exc., \$10,000 OBO; JD D 1947 puller alum. pistons, exc. shape, \$4500 OBO. 410/798-1234.

1953 JD 50 Tractor 2Cyl A1-Shape. Show or Work. \$3,000. Ask for Doug. 717-436-2626

1996 Case 1840 skid loader, 1500 hrs, \$11,900. 1995 Case 1838, new tires, \$9800. 1990 Case 1840, \$8400. 717-859-3456

IH 986 with cab, air and heat, excellent condition \$12,500. Gravity bin on 8 ton Grove Gear \$800, 4 x 4, Timothy and Orchard grass round bales \$30. 717-567-3667.

Vermeer R-23 Twin Folding Hydraulic Drive Hay-Rake, Same as JD 700. V.G. Cond. 540-885-6297

JD 7800 tractor, cab, power quad, sharp, \$37,500. 301-733-2195.

Ford 3pt hitch hay rake, side delivery, \$350. 732-446-5805.

NH 900 chopper, metal alert, 360 N3R crop head, 990W hay pickup, shed kept, no custom work, field ready. UFT dump wagon, TS4205, nearly new. Chester Hills Farm, Chester Co, 610-255-4359.

Zetor Zebra 2040, 4WD, 20hp diesel tractor, 35 hrs, like new. 570-455-7963

JD 84" gang mower to fit 755, 855, 955, \$500 obo. 717-859-3158

Int. 7-tooth pull type chisel, \$650; Int. 4R fast hitch cultivator, \$225; NH 467 haybine, \$1800. 610-562-4464.

Farmall 350 Gas, NFFH 12V Needs Paint & Tires, Runs Good. \$1500/obo. 717-573-2810

BELTING: We specialize in flat belting, cut to order, baler throwers, self unloading wagons, long table blower belts. Franklin Co. 717-263-0573. NO Sunday calls.

1460 IH combine, 963 corn head, 6R, Case IH 1020 grain head, 15'. 570-966-3579

200 6" Cultivator Sweeps with 7/16 Bolts & Nuts, New, \$600 856-769-3183

Deutz 80-06 late model, 3600 hrs, vg cond, \$3500 obo. 68-06 (2) PTO, (2) remotes, needs some work \$4500 obo. 717-426-2659

AC: 8070 FWD w/ldr, 80% tires, nice, \$24,000; 6060 FWD w/ldr, \$9,000 or \$28,000 for both. 724-548-2819.

Fancy Fancy! Case IH 1660 axial flo, as nice as you can find. Low Low hours! 1700 hrs. You got to see it! Was \$48,500, now \$44,900. Zeisloff Eq. 800-919-3322.

Grain Auger- West field 8'x51' PTO w/Transport, Used One Season \$1450. 732-528-8680

JD baler, 24WF, w/kicker, \$1250 OBO. 610/791-0235.

JD 850 22HP, 2WD, 3PTH, P/S 22HP, 2WD 3PTH, P/S w/JD 72" Mid-Mount Mower, Only 1,000-Hrs! Nice! \$7,500 301-824-2348

Gehl HL4600 diesel skid loader, \$4,500. Heavy Equipment Loader Parts, Rt 22, Grantville, PA, 717-469-0039.

JD 643 lo tin 6R corn head, \$6500; Gehl 2170 haybine, \$2650. 570/437-4355.

JD 4WD 6310 tractor w/640 loader, only approx 250 hrs, \$44,500; also many other JD implements, exc. cond. 301-473-4046.

JD 5820 Dura drum, metal detector, 3616 hrs, 3RW head, \$22,900. JD 7520 w/12' blade, duals, 3pt, PTO, \$11,900. '92 FL70 truck, w/18' silage box, new '99, 33, 000 GVW, Cummins eng, \$26,500. Butler Oswald 320 mixer, \$1850. 717-273-6105

205 Int'l Combine. 3RN Corn Head, 13' Grain Head, Good Cond, but Straw Walker Shaft Bent. Will Part-Out, if Enough Interest 814-784-5655

JD 3055 4 post, mechanically sound, needs TLC, '92 model, \$10,800. 717-354-7869.

JD 401 industrial, 3pt PTO, loader, hyd. reverser, 2250 hrs, good rubber, asking \$6500. 717-245-2953.

IH 1086 CAH, IH 1066 cab, IH 3288 CAH. (2)IH 1066 fender tractors. IH 966 fender. IH 966, 2 post, canopy. Farmall M. 570-966-3483

1981 MF 750 combine, grey cab, 763 corn head, 13' flex float grain head. 717-866-6432

Automatic hook-up for 3pt equip. Self aligning "A" frame w/hydraulic top link was \$895, now \$450. 410-398-2909 (h) 443-553-4423 (c)

Case 2290 coming out of repair shop w/new ring & pinion, power shift overhaul, only 4600 hrs, runs good, \$14,500. Zeisloff Eq. 800-919-3322.

Richardton 700 Dump Wagon, Exc Cond., Shed Kept, Later Model. \$8,950 301-432-4293

JD 6410 tractor, cab, 4x4, power quad, left hand reverser, 920 hrs, \$42,500; JD 4450 tractor, cab, nice, \$21,500. 301-733-2195.

Gleaner F3 combine, hydro, 13' flex head, 430 black corn head, ex cond. 410-848-8848

JD 6600 Combine Dsl w/13' Grain Head, Hi-Hrs, \$2700; MF 550 & IH 503 Combine for Parts, No Eng. 610-683-3428

Ford 3000 Dsl Tractor, 8 Spd, Hi/Lo w/ w/o Bushog. 717-721-9439

Ag Wrap 5x5 round bale wrapper, 3pt hitch, \$4500. 717/359-7587 evenings.

JD 3970 Chopper w/Late Md 3R Corn Head, Spout Track & Metal Alert \$8900; 5200 18' Miller Pro Wagon, 15-Ton Running Gear, Still Under Warranty \$7900. 717-530-0128

Used Tires 13.6x38 85% \$100; Like New 13.6x38 \$150; (2) 15.5x38 80% w/Rims \$150/Ea.; (1) 15.5x38 75% w/o Rims \$75; IH 806 WF, Good Cond. \$800; 610-683-3428

Gleaner M2 hydro, just arrived, looks good, runs good, \$10,500, very reasonable. Zeisloff Eq. 800-919-3322.

IH TD6 crawler tractor, shelter kept, needs new radiator, \$2500 obo. 717-334-2722

Bobcat 763 600/Hrs, New Bucket & Tires, Nice, \$12,900 717-369-4115

4615 Gehl skid loader, 42hp diesel, good running cond, \$5,800. 717-354-6706.

Oliver 1250 Vineyard, good condition, runs great, \$5500. 570-546-5574.

3,000 gallon S/S tank, 20'x7' \$400. Warren Co, NJ, 908-362-8151.

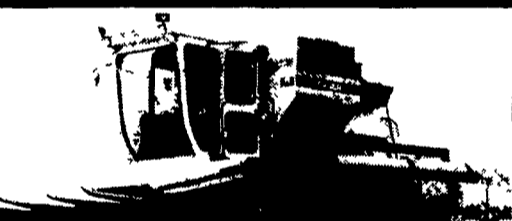
Additional Auction Ads Appear In The A Section of Lancaster Farming

530 JD baler.....\$7,000
30' dump, aluminum, good shape.....\$7,500
Big Wheels 1976, Chevy 427, Allison trans, new rear floaters.....\$5,000
with John Blue 1200 gal, 55' sprayer w/Dickey John controller.....\$6,000
Egypt Farms
Call Joe at 301-834-6060

STEEL HAY WAGON BOXES
16' 18' or 20 x 8 8 1 2' or 9
Also sides to bolt on your wooden bed
ROUND BALE CARRIERS, ROUND BALE FEEDERS.
Dealers Welcome
ELIMSPORT WELDING SHOP
570-547-2476 or 1-888-462-4124



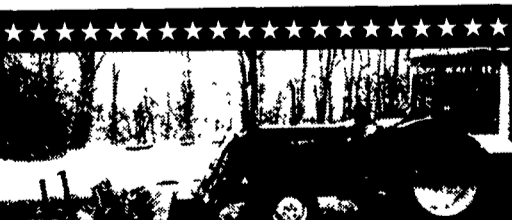
NI800C-1, Cummins, Turbo Diesel, 4WD, 1400 hrs., w/custom built belt loader for snow or compost, good condition. Best offer. (717) 626-1394



M - Hydro Combine with 16' Floating Cutterbar, 630 Corn Head; G - Combine for Parts with 13' Platform, 430-440 Corn Head; Heavy Duty Backhoe Attachment 717-987-3444



1993 CLAAS 695 4WD KP
6 Row Corn Head, 10 Ft. Pickup, 1400 Cutter Hours
717-665-4109



1985 JD 1050
4WD, 33 HP, 940 Hrs., 75 Loader, 7' Loader Mt. Plow, 3' Pallet Forks
Asking \$12,500
Will Sell Separate
Dean **610-845-7293** (6-9 p.m.)

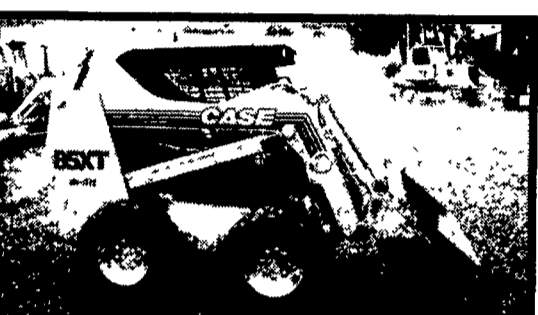
Lancaster Farming, Saturday, July 22, 2000-C5

Ford 1500 diesel tractor, 5' Woods belly mower, 950 hrs, \$5,000 OBO. Snow blower, 5' 3pt, brand new, \$1,400. 215-598-8237.

(3) Gleaner F2 combines, all w/AC, 1 hydro, all very clean, all good condition. Zeisloff Eq. 800-919-3322.

For Sale
JD 336 Baler w/30 Ejector.....\$3,800
8x18 Wooden Bale Wagon w/NH Gear.....\$1,400
8x16 Wooden Bale Wagon w/JD Gear.....\$900
PBZ 3 Point Round Bale Mover.....\$150
717-733-4603

STOLTZFUS TRACTOR SERVICE
Rebuilding engines, transmissions, PTO's, Tune-ups.
1715 Beaver Valley Pike, Strasburg, PA 17579
717-786-0256
Amos Stoltzfus
"15 Years Experience"



98 Case 85XT, 358 Hrs. \$470.68/mo or \$22,500
96 Case 1845C w/1329 Hrs \$271.40/mo or \$12,900
96 Bobcat 753, 1470 Hrs. \$206.01/mo or \$9,750
WEACO EQUIPMENT
Ask for Jay - 717/336-7375

DEPENDABLE MOTOR CO.
East Main St., Honey Brook, PA
610/273-3131 or 610-273-3737
www.dependablemotor.com

Ferris 3 Wheel Commercial Mower 61" Owatonna 342 Skid Loader
NH 770 Pick-Up Head Kuhn Tedder
Richie Hog Waterer Skag Commercial Walk Behind Mower
NH 315 Baler w/Thrower

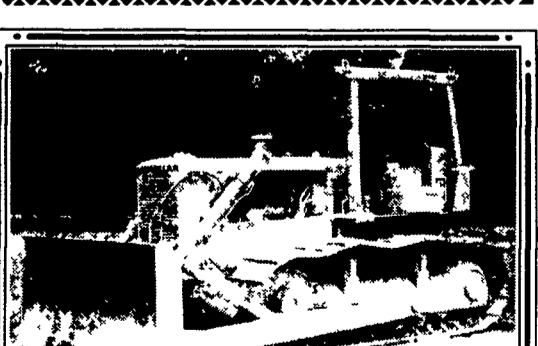
GRUETT Forage Boxes The Strongest Box Period. **WE REBUILD** 489 WOBBLER BOXES



EQ. FOR SALE

'96 JD 6810 Forage Harvester, 1,100 cutter head hrs., KP exc. cond., comes w/6R Kemper head, new main clutch, silage inoculant, applicator.....\$140,000
'72 Mack R600, 18' hyd. endgate, silage bin, new in '99, just overhauled, exc. cond.\$15,500
'99 Richardton 700 dump wagon, 1 season old.....\$10,000
'99 Balzer Mdl. 1016 dump station, 1 season old.....\$9,800
'74 Ford LN900 Roadranger, gear box, 21' Meadowlands silage bin.....\$11,000

Reason for sale - owner relocating to Southwest. (215) 275-6035



CAT D6-C
UC-85%, Has Tilt, New Bottom Rollers, Sprockets, Rebuilt Idlers, Pins & Bushings turned, Exc. Cond.
\$19,950 - 856-769-3183

DELUXE PICKUP SEAT
\$ 379.00
F.O.B FACT
CALL FOR CATALOG
301-864-1079
Emerson Seating
BOX 283 - HYATTSVILLE, MD 20781