

# PUBLIC ESTATE AUCTION

**SAT., AUGUST 12, 2000**  
9:00 AM

Located in Perry Co. Wheatfield Twp. RD2. 100 Paradise Rd. Duncannon, Pa. Directions from Duncannon - Follow Rt. 849 west to Bruce's Furniture Store. Approx. 1/4 mi. west of the store turn left onto Paradise Rd. (on horseshoe curve). Go 2 miles to auction on right, or take Rt. 274 west from Duncannon approx. 3 miles, turn right onto Paradise Rd. and go approx. 3 miles to auction on left (near Wright's Used Autos).

### REAL ESTATE (12 noon)

Located on a 1.99 ac wooded lot is 1 yr. old. 3-level semi "A" frame home boasting 2600sq. ft. of living space containing 2-BR's (the potential for additional Br's). 2-baths, lg. eat-in kitchen w/adjoining dining room. 2-car garage, a detached 24'x24' deck w/18 jet hot tub. Must see to appreciate. Shown by appointment only. Call 717 834-5270. Terms-10% down the day of auction. The balance due at settlement. Offered w/reserve.

**AUTO-BACKHOE-TRACTOR-TOOLS  
GUNS-KNIVES-MUSIC-VCR TAPES  
APPLIANCES-FURNITURE-HOUSEHOLD**  
The Marvin F. Parson Estate  
Thomas W. Parson, Executor

Nevin AU 2553-L  
**FAHNESTOCK'S**  
582-245-  
8565 Auction Service 2727

# ABSOLUTE AUCTION

**OF VALUABLE REAL ESTATE**  
(Intercourse Fire Hall)  
**AND NEW DONATED ITEMS**  
**MON., AUG. 14, 2000**

**Sale at 5:30 P.M.**  
**Real Estate at 7:00 P.M.**

Located at 3545-3547 Old Phila Pk in the Village of Intercourse, Leacock Twp, Lanc Co, PA

**Lot: 35' Frontage, 130' Deep M/L  
Zoned Commercial**

1 story block & stucco building 2 large bays w/overhead doors, two smaller bays w/ overhead doors, large meeting room, kitchen w/built-in wood cabinets, two gas stoves, double sink, two oil fired hot air heating systems, hallway w/outside entrance, 2/3 basement w/two restrooms, two storage rooms, elect water heater, outside entrance, well w/pressure system & purifier, public sewer

Open for inspection Sats, July 29 & Aug 5, from 2 00 to 4 00 PM or for appointment call Elam at 768-3841 or Don at 768-8231 10% down day of sale, balance on or before Jan 2, 2001

Terms by  
**INTERCOURSE FIRE CO.**

Aucts  
Robert E, Jeffrey R & Michael L Martin, 717-656-7770  
AU000580L  
Randall L Ranck  
Linda Kling, Atty  
Refreshments available No out of state checks

## Public Auction Register

Closing Date Monday 5:00 P.M.

of each week's publication

Internet Sale Register will be updated

every Sat. at 2:23 P.M.

**ATTENTION Auctioneers**  
All sales register info needs complete address, Street, town, county & state.

TUES JULY 25 & JULY 26 - 9AM  
Quilt, Craft & Buggy Auction A & C  
Diffenbach Auction Inc  
AU2258-L 717-355-7253

TUES JULY 25 - 10 35 AM  
Supermakret Auction,  
bakery/deli Parker's Thriftway  
49 Bramhall St Georgetown,  
De Bell Aucts

TUES JULY 25 - 2PM Antiques,  
Collectibles, Household, 909 Line  
St, Sunbury, PA Simon W  
Kaichinski Mark J Jones, Auct  
AU1595-L

TUES JULY 25 - 3PM Music  
boxes, trains & supplies  
antiques collectibles personal  
property Campbelltown fire Co.

Campbelltown Leb Co. Pa By  
Anna Patrick Harry H Bachman  
auct

TUES JULY 25 - 3 30Pm House-  
hold goods, automobiles, lawn ar  
equip 4540 Davidsburg Rd  
Dover, Pa By Pamela J Covey  
Blaine Rentzel auct #761

TUES JULY 25 - 7PM Real  
estate, 3 BR split level dwelling  
on 1 acre 26 Frame Ave  
Malvern, Pa E Whiteland Twp  
Chester Co Estate of Charles D  
Hurley Farming Farm Agency  
Inc 610-286-5183

WED, JULY 26 - 9AM Chester  
Co Real estate, antiques, furni-  
ture, glassware tools, lawn &  
garden equip & household  
goods At 5066 Homeville Road  
Oxford Chester Co Pa For  
Howard E Cook Estate Barr-  
Davis Aucts

WED JULY 26 9AM Farm  
Equip Tractors Truck Lots To  
be held at Wolgemuth Auction  
109 N Maple Ave, Leola, Lanc  
Co Pa 717-656-2947 #2357

WED JULY 26 - 9 30AM Entire  
stock and equip Heritage Gard-  
ens 257 Kennett Pike Mende-  
nahli, Pa N of Centerville, De  
near intersection of Rt 52 & Rt 1  
John J McGrellis III, auct

WED JULY 26 - 9 30 AM Stand-  
ing Timber approx 10 acres  
Along Rt 235 3/4 mile north of  
Troxeville Pa Kenneth E Has-  
singer Neil A Courtney aucts

WED JULY 26 10AM Metal  
Working Machinery Material  
Handling Equip & Machinery  
Trailer & More at NE Machinery  
Warehouse The Berwick Ind  
Park Bldg 314, Berwick PA  
Col Steve Sitar AU2124-L

WED, JULY 26 2PM Antiques  
HH Goods, Collectibles Coke  
Memorabilia Tools at Horst Auc-  
tion Center, Ephrata, PA Horst  
Auctioneers #AU438L

WED JULY 26 3 PM Nice col-  
lectibles, power & hand tools, 27  
E Cottage Ave Millersville Pa  
for William Hertzog by Probst  
Family Auct AU-001856-L

## PUBLIC AUCTION

of 1.19 Acre Building Lot

**THURSDAY, AUGUST 10, 2000 at 7:00 PM**

Directions: From Honey Brook, take Rt 10 North Go left  
on Reservoir Rd to the lot on the left Honey Brook Twp  
Chester Co Twin Valley School District

Land consists of approx 1.19 Acres mostly open and gentle  
southern slope with some trees Overlooks beautiful Chester  
Co farmland Lot is perk approved for a sand mound and ready  
to build

For a plot plan or additional information call Auctioneers at  
(610) 286-5183

Terms: 10% down on day of sale, balance in 30 days

Terms By: **Benuel S. & Emma S. Stoltzfus**

**HFA HORNING**  
FARM AGENCY, INC.  
REALTORS AUCTIONEERS APPRAISERS

Merle Eberly AU-2417-L • Alvin Horning AU-0433-L  
Elton Horning AU-0434-L  
Route 23 Morgantown, PA 19543 (610) 286-5183

# ABSOLUTE AUCTION

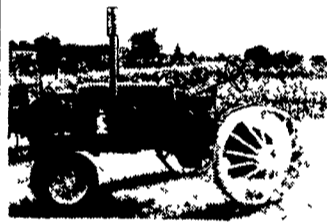
**ANTIQUE JOHN DEERE TRACTORS & PARTS  
IMPORT AUTOS, OLD FARM TOOLS, IRON & WOOD  
ANTIQUES, FURNITURE & COLLECTIBLES  
WOODWORKING TOOLS, LAWN & GARDEN EQUIP.  
OLD SLEIGH**

**SATURDAY AUGUST 19, 2000 at 9:00am**

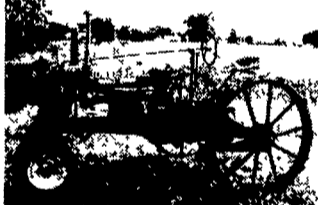
Located in Refton, Lanc, Co, PA.  
(approx. 6 miles south of Lancaster PA. Along Rt.222 South)

### TRACTORS & EQUIPMENT

1931 GP WIDE TREAD SN403376 w/rare potato wheels rear, PTO  
mechanically rebuilt, new paint 1939 GP STANDARD SN223943 full  
factory steel, mechanically rebuilt, new paint. 1936 UNSTYLED B  
SN22760 short frame, flat spoke rear wheels very good cond 1949 M  
SN25995 w/cultivators, un restored, running. 1940 L SN633661 w/side and  
drive shaft belt pulley, rear wheel spacers, nice original cond 1960 435  
DIESEL SN 437843 Detroit diesel, wide front, #PTH, Power adjust  
wheels, good original cond 1956 630 SN6312309 narrow front 3PTH,  
good running cond., new paint 1953  
FERGUSON MODEL 30 SN120122



w/front loader and rear hoe attachment GP Parts: engine blocks, gears,  
chassis parts. 730 Diesel hood and grill assembly for electric start Model  
60 block and manifold M Front and nose weights. Silk screen for 1936  
AR UNSTYLED hood characters 420-430 Tricycle side weights. JD  
3PTH two row corn planter w/fertilizer Cultivators for JD L, 5' sickle bar  
mower for JD L. Operators manuals for JD Model 60, Model B, Model M,  
No.999 corn planter and others Lots of small JD parts



### MISC. FARM & GARDEN EQUIPMENT

FIMCO 3PTH sprayer. Trailer sprayer 8'tandem disc CUB CADET model 147 Hydrostatic 14 h p w/48" deck &  
model 104 w/42" deck 4spd rding mowers, lawn cart HABAN RACINE 4' sickle bar mower

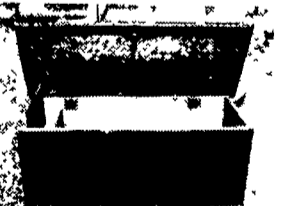
### TRUCKS & AUTOS

1951 INTERNATIONAL L-180 fire truck, 1963 INTERNATIONAL 1500 4WD  
flat bed w/meyer power angle plow; 1958 PORCHE 356 CABRIOLET ready  
to complete restoration, 1966 MERCEDES 280S European car w/fuel  
injected motor, 1980 VOLVO SEDAN w/Bertone interior, TRIUMPH TR-250  
(3) selling together, International 6 9L Deisel, Ford 302 engines, import parts  
and more



### ANTIQUE, FURNITURE & COLLECTIBLES

Early painted 6' drop leaf table, (2) Sheridan style rope beds w/cherry finish,  
Walnut work table, Seth Thomas eight day Empire shelf clock, Hipplewhite  
birds eye maple chest of drawers, Yarn measure, Painted chair table, Walnut  
women's dressing table, Quilt rack, Pine Pennsylvania Decorated blanket  
chest w/till box, Pine cupboard top, Centennial Philadelphia mantel w/fluted  
columns and vine & wreath appliques, Decorated mahogany banjo clock, New  
England signed molding planes, Wicker chaise lounge, Birdcage Windsor  
chair, Rosewood w/brass inlay lap desk, Standard Computing Scale, Maple  
carpenter work benches. Shimmel reproduction eagle. Misc oriental rugs,  
Old wooden mouse traps collection Old ANTIQUES sign PA Grain painted hanging cupboard Early  
Architectural cupboard w/dentil molding retaining it's original blue paint Conestoga wagon model. Property  
sale bill signed WM. Penn. Best City tin horse & wagon toy. Pine 7-shelf dish rack Victorian: wrought iron  
fence w/gate & posts. Cast iron coat rack w/umbrella stand Cast Iron: Griswold  
and others, coal & wood stoves (cast iron & porcelain finished), radiators, feed &  
water trough, Grape & vine lawn furniture, farm bell Silver plate chaffing dishes &  
casserole. Wall sconces: mirrored, iron and others. Chaukware deer figurines  
JCS decorated redware, slipware marked ABE, Chinese Export china, Colored  
Agate ware, Signed NY pewter coffee pot w/2 mugs, Face Jugs: 12 1/2" & 11  
1/2" signed CL, 10 1/2" signed John Brock, 3 3/4" & 2 1/2" signed Marie Rogers  
Scale house models.



LUMBER- 4/4 & 5/4 White Pine and White Oak to 19" width and 16' length. Clear Cedar 1/2" x 8 5/8" to 16'  
length. Lots of restoration lumber and trim, shutters, doors and hardware

**MORE INFO AND PHOTOS AT [www.porterfieldauctions.com](http://www.porterfieldauctions.com)**

Terms: Cash, approved check or certified funds

9:00 am Furniture  
10:00 am Tractors & Equip.  
12:00pm Autos

e-mail: [info@porterfieldauctions.com](mailto:info@porterfieldauctions.com)  
[www.porterfieldauctions.com](http://www.porterfieldauctions.com)

**PORTERFIELD**  
AUCTIONEER  
(717) 871-9004  
29 Indian Hill Road, Conestoga, PA 17516  
R.L. "Bob" Porterfield AU-003741-L

## "Horst Auction Center"

### PUBLIC SALE

**ANTIQUES, HOUSEHOLD GOODS,  
COLLECTIBLES, COKE MEMORABILIA, TOOLS**  
**WED., JULY 26, 2000 AT 2 P.M.**

Sale to be held at the Horst Auction Center, located at the corner  
of Rt. 322 & Durlach Rd. (approx. 2-1/2 miles west of Ephrata),  
Ephrata, Lancaster County, PA.

**FURNITURE:** Wood Chest, Painted Cupboard Top; Fine Antique  
Wicker Patio Set; Cottage Kitchen Cabinet; Decorated Bench; Mortised  
Bench; OAK - Hall Rack; Bonnet Chest of Drawers, Washstand,  
Stacked Bookcase; Treadle Sewing Machine; Antique Oak & Glass Pie  
Case; Store Case; MAHOGANY - FINE 6 PC. BEDROOM SUITE;  
Gateleg Table; Piano Stool; Pump Organ; DEPRESSION - Deco  
Bedroom Suite; 10 Pc. Dining Room Suite; Deco Breakfast Set; Spinnet  
Desk; Chifforobe; Cedar Chest; Desk; Windsor Chair; Cherry Bedroom  
Suite; Cherry Desk; Mod Oak Buffet; Computer Desk; PINE - Hutch;  
Maple Arm Living Room Set; Love Seat; Recliner; Channel Back  
Chairs; Display Cupboards; Dropleaf Table; Dome Top Trunk

**APPLIANCES:** 1934 G.E. Porcelain Electric Stove; Chair Glide; Wheel  
Chair; Colortrak TV; Video Disc Player; PC Computer (w/Windows),  
VCR Camera; Sewing Machines, Comm. Sewing Machines; Lamps,  
Deco Clock; Banjo Clock, Carnage Clock; China Case Clock, Set  
Sterling Flatware; Antique Table Radios; COLUMBIA FLOOR MODEL  
GRAFANOLA, RCA Radiola/Electrola; Motion Lamp; Lantern

**CHINA & GLASSWARE:** Stick Spatter, Blue Transfer; Collection of  
Metlox Poppytrail Dishes, Set of Bavarian China; Oriental Vase; Mixing  
Bowls, Van Briggie Pottery; Jardiniere, Cupidomonte; Stoneware;  
Radioactive Water Bottle; Cookie Jar; Collector Plates, Michters Bottle,  
Pressed & Pattern Glass; Embossed Peanut Jar; Butter Churn,  
Fostoria; Hobnail Glass; Carnival Glass; Glass Hummel Figurine; Water  
Bottle; Bracket Lamp.

**LINENS:** Fancywork, Lap Robe; Sewing Supplies; Buttons, Fur Coats,  
Hats; Lg. Santa Figure; Celluloid Dresser Set; Jewelry; Sm. Wood  
Propeller; Watches; TOYS - Collection of Plastic Corvette Promos,  
Remote Corvettes; Lionel Freight Set; Hess Trucks; HO Campbell Soup  
Set; Winross Trucks; Hubley & Gabriel buses; BABE RUTH NATIONAL  
GAME OF BASEBALL (1921); Paintings, Prints; Gunn Prints; Post  
Cards; Reverse Painting, Printed Tauschein, Repro. Framed Maps,  
Books - Local Geneology; Biographical Annals of Lanc Co., Sets of  
WW2 Books; Ephemera; Valentines; World's Fair Memorabilia; Old  
Photos

**COCA COLA COLLECTIBLES:** COCA COLA 10c BOTTLED SODA  
MACHINE; Fine Cooler; Signs; Thermometer; Coke Store Rack,  
Collection of Commemorative Bottles; Trays, Pepsi Bottle Carriers; Mr  
Peanut Collectibles; ANTIQUE MATCH DISPENSER; Dairy Cases &  
Milk Bottles; Milk Bottle Carrier; Belt Buckles; Atlas Tire Adv

**TOOLS:** JOHN DEERE GARDEN TRACTOR (Hydro 185 w/Mower,  
Rear Bagger & Snowblower); Chipper/Shredder; Chain Saw, RADIAL  
ARM SAW (10"); 14" Band Saw; Floor Drill Press; Belt Sander; Router,  
Bench Grinder; Air Compressor; Pallet Jack; Acetylene Welding Set,  
Elec. Welder; Buffer/Grinder; Kerosene Blow Heater; Alum. Ext  
Ladder; Hydraulic Jack; Mechanics Tool Chest (Upper & Lower), Lg  
Assortment of Hand Tools; Clamps, Carpenters Tool Chest & Tools; Set  
Swan Auger Bits; Planes; Hay Hook; Platform Scales; Milk Pail;  
Sprinkling Can; Iron Horse Tie; SCHWINN DELUXE TWINN BIKE; Golf  
Clubs; Skis; Fishing Rods; Express Wagon.

No Out Of State Checks Without Prior Approval.

**HORST AUCTS.**  
T. Glenn  
Timothy G.  
Thomas A.  
AU438L  
(717) 738-3080  
Fax # (717) 738 2132  
VOICES OF EXPERIENCE