

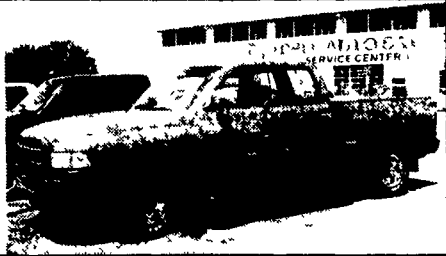
**TRUCK CAPS • BED LINERS  
COMPLETE SERVICE DEPARTMENT**



**Apple Auto Sales, Inc.**

*Preowned Cars & Trucks*  
Route 30 - Lincoln Highway East, Gap, PA 17527  
717-442-9700 • 717-299-9900 • FAX 717-442-3140  
Email contactus@appleautosales.com Web www.appleautosales.com

**1996 Dodge Ram  
X-Cab SLT**  
318 V8, AT, PS, PB, PW,  
PL, PM, Cruise, Tilt,  
Delay, Tow Pkg, Cass,  
A/C, Sliding Rear Glass,  
Fog Lights, 24K Miles



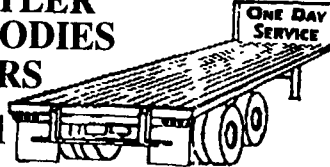
**1999 GMC Crew Cab Dually 4x4, 454 V8, AT, PS, PB, PW, PL, PM, Cruise, Tilt, A/C, AM/FM Cass, 10,000 GVW, 7,700 Mi, Maroon**  
**1999 Ford F-350 4 Door X-Cab, 4x4, Dually, Triton V10, 8' Bed, AT, PS, PB, PW, PL, PM, Cruise, Tilt, A/C, AM/FM Cass, 6,500 Miles**  
**1999 CHEVY 3500 CUBE TRUCK, 350 V8, AT, PS, PB, Tilt, AM/FM/Cass., A/C, Dual Tanks, 11,000 GVW 12 Ft., box w/storage (2 to choose from)**  
**1999 Dodge Ram 3500, Dually 4x4, 10' Dump, Cummins 6 Cyl, 5 Spd., PS, PB, AM/FM/CD, A/C w/Plow & Salt Spreader**  
**1999 Ford F-350 X-Cab Dually, V10 Triton / Auto O D, PS, PB, PW, PL, PM, Cruise, Tilt, Delay, AM/FM/Cass, A/C, Sliding Rear Glass, 4x4, 4-doors**  
**1999 Chevy Extended Cargo Van, 5.0 Vortec V8, AT, PS, PB, A/C 7,300 GVW**

**LIFETIME FREE INSPECTIONS • BUY & SELL**

**TRAILER FLOORS INSTALLED  
OAK OR APITONG**

**HOSTETLER  
TRUCK BODIES  
& TRAILERS**

(717) 667-3921



Milroy Exit off Rt. 322  
Between Lewistown & State College

**East Coast Trailers**  
Honesdale, PA • 570-729-8870



28' 20,000 lb. gooseneck.....\$5,650  
24' 14,000 lb. gooseneck.....\$3,595  
Other Models & Sizes in Stock



**O'CONNOR  
TRUCK CENTERS  
HARRISBURG**

**(800) 669-6235**



**1991 FORD LA9000, L10 260 HP, 9 Speed Trans, 34,700 GVW, 416,887 Miles, C A -84, A/C, Custom Interior**

**Coming In  
DIESEL  
10 Ft. Dump  
33,000 GVW**

**1989 FORD F800, 7.8 Diesel, 210 HP, 5/2, 10 ft Galion, Pintle Hook \$15,900**



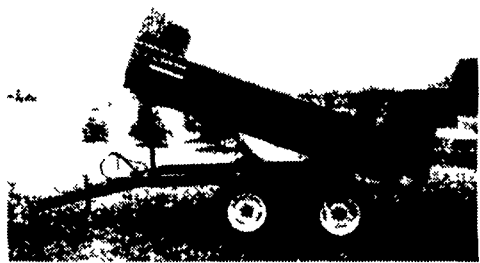
**1998 FORD F800, 5.9 Cummins 210 HP, 7 Speed Spicer, 26,000 GVW, 69,900 Miles, A/C, 26 ft Supreme Body w/Liftgate**

**FARM DUMP TRAILERS**

(Direct from the Manufacturer)

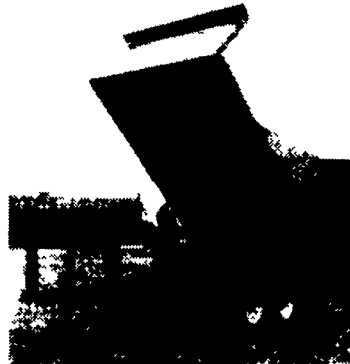
**6-Ton Dump Trailer**

- 10 ft. x 7 ft.
- Floating Tandem Axle
- 3 ft. Front, 3 ft. Tailgate & Grain Chute
- 16 in. Extendable Sides
- 10 ga. Floor & Sides
- 11Lx15 Flotation Tires
- 2-Way 4 in. x 24 in. Hydraulic Cylinder includes hoses



**7-Ton Road Dump Trailer**

- Fifth wheel or bumper type
- 16 ft x 8 ft deck 3 ft. front rack and pockets side & back
- D C hydraulic pump & battery mounted in locking tool box.
- 12 ton drop leg jack
- 10 ga. floor
- 6x3x3/16 tube main frame
- Sealed beam lighting
- 7000 lbs. per axle rating
- Electric brakes on both axle
- 16" tires on white spoked rims
- \$6400 U.S. delivered in Northeast U.S.A.



**BERKELMAN'S WELDING**

RR 7, AYLMEER, ONTARIO, CANADA N5H 2R6  
(519) 765-4230



**1995 FORD CF8000, 8.3 210 HP, 6-Speed, A/C, 30,000 GVW, 166,750 Miles, 24 Ft FRP. Ramp**



**1995 FREIGHTLINER FL70, 8.3 210 HP, 6-Speed, 26,000 GVW, 150,450 Miles, Air Brakes, Red & Beige, 26' FRP. Ramp**



**1997 FREIGHTLINER FL70, Cat 3/26 210, 6-Speed, 26,000 GVW, 252" WB, 105,010 Miles, Air Brakes, A/C, Cab & Chassis**



**1983 GMC BRIGADIER 671, 10 Spd. Trans, 46,000 GVW, Hendrickson Susp., Double Frame, 210" WB, 177 C.A., 99" AF**



**1995 FORD LT 9000, 12.7 430 HP, 10 Speed, FA-14,060, RA - 46,000, Air Suspension, 242,430 Miles, A/C, Red**



**1983 IHC F2275, Cummins, 10-Speed, 346,310 Miles, 148" WB, A/C, Air Slide 5th Wheel**

**O'CONNOR TRUCK SALES  
OF HARRISBURG**

470 Penhar Road  
Harrisburg, PA 17111  
(800) 669-6235

www.oconnortruck.com



Sales Hours Monday Friday 8 a.m. - 6 00 p.m.

Great Selection!  
Specializing In  
Late Model Vans

**30/Four Way  
Auto Sales**

770 W. Main New Holland, PA 17557  
(717) 354-3199  
1-877-999-VANS (8267)



School Van

**95 FORD E-350 SUPER CLUB WAGON, 10 Passenger, Dual A/C & Heat, Tilt, Cruise, Meets Federal Standards, White, 40K Mi, #3460**



**99 FORD E-350 SUPER CLUB WAGON XLT, 15 Passenger, 5.4 V8/V10, Dual A/C & Heat, Privacy Glass, Tilt, Cruise, PW, PL, P Mirrors, Cassette, Blue, 27K Mi., #3429**



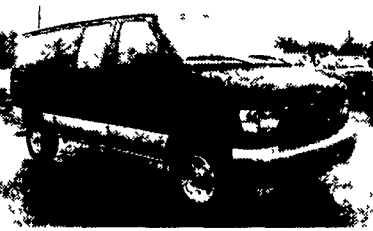
**98 FORD E-150 CLUB WAGON XLT, 8 Passenger, 5.4 Triton V8, Dual AC & Heat, Privacy Glass, Tilt, Cruise, PW, PL, P Seat, P Mirrors, Cassette, Tow Package, Rear Step Bumper, Tan, 58K Mi, #3457**



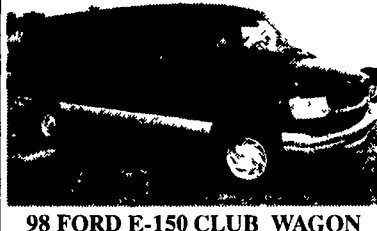
**98 FORD E150 CLUB WAGON XLT, 8 Passenger, 4.6 Triton V8, Dual A/C & Heat, Privacy Glass, Tilt, Cruise, PW, PL, Keyless, P Seat, P Mirrors, Cassette, Tow Package, Alloys, Blue, 43K Mi., #3468**



**97 DODGE B1500 RAM WAGON SLT, 8 Passenger, 5.2 V8, A/C, Privacy Glass, Tilt, Cruise, PW, PL, P Seat, Cassette, Black, 41K Mi., #3410**



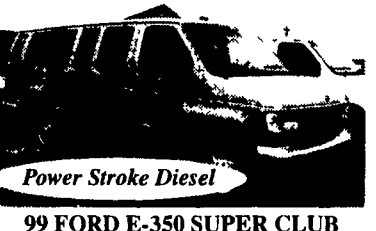
**96 FORD E-350 SUPER CLUB WAGON XLT, 15 Passenger, 5.8 EFI V8, Dual A/C & Heat, Privacy Glass, Tilt, Cruise, PW, PL, P Mirrors, Cassette, Black, 52K Mi, #3479**



**98 FORD E-150 CLUB WAGON CHATEAU, 7 Passenger, 4.6 Triton V8, Dual AC & Heat, Privacy Glass, Tilt, Cruise, PW, PL, P Seat, P Mirrors, Cassette, Quad Captains, Green & Silver, 23K Mi, #3432**

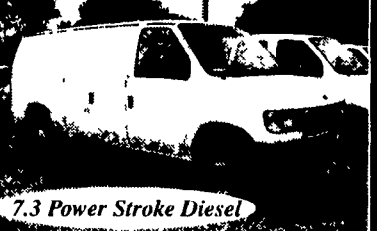


**99 DODGE B3500 MAXI RAM WAGON, 15 Passenger, 5.4 Magnum V8, Dual A/C & Heat, Privacy Glass, Tilt, Cruise, PW, PL, Keyless, P Mirrors, Cassette, Rear Step Bumper, Burgundy, 30K Mi, #3481**



Power Stroke Diesel

**99 FORD E-350 SUPER CLUB WAGON XLT, 15 Passenger, 7.3 Power Stroke Diesel, Dual A/C & Heat, Privacy Glass, Tilt, Cruise, PW, PL, P Seat, P Mirrors, Cassette, CD, Rear Step, Blue, 28K Mi, #3477**



7.3 Power Stroke Diesel

**97 FORD E-350 ECONOLINE, 7.3 Powerstroke Diesel, A/C, 9500 GVW, Step Bumper, White, 25 K Mi, #3407**