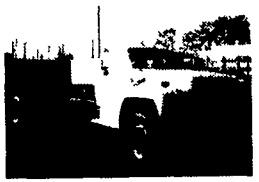


**LEED TRUCK CENTER**

402 South Chiques Rd  
Salunga Exit, Route 283

**717-898-1200**



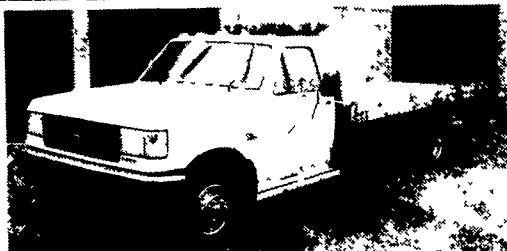
1986 IHC S1854, DT 466 5 Spd, P/S, A/B 35,000 GVW 24 Platform With Clearfield Conveyor Call for Details

1989 Ford F800, 7.8 Liter Turbo Diesel, 210 HP, 5&2 Spd P/S, A/B A/C, 174,000 Miles, 150 CA Insp Very Clean \$9,900



Chevy/Isuzu 1999 & 1998, W4500 4 cyl Turbo, 5 Spd P/S A/C 14,250 GVW, Low Miles Very Clean Insp Call for Details

1985 FORD LNT9000, 3208 Cat, 13 Spd P/S, A/B, 50,000 GVW, Hendrickson Susp 22' Platform New Insp Clean \$10,900



**1988 FORD XL F Series**  
Super Duty Diesel Truck With 17 Ft. Chevron Roll Back 14,500 GVW, 44,000 Original Miles. Asking \$19,000  
**717-393-6530 or 940-1882**

**"THINK KOOL"**

- '90 Great Dane 48'x102", Thermo-King (bad floor)
- '87 Trailmobile 48'x96", Carrier Unit (bad floor)
- '85 American 46'x96", Carrier, good trailer
- (4) Hackney 24' Bodies, Carrier Mistral 800, 48" R/up Rear Dr, Side Dr
- '91 International 4600, 7.3L Diesel, 10' Reefer, Carrier R-1
- (2) 18'-20' Storage Bodies with Thermo King Units
- (8) Various Thermo King Take-Out Units and Parts

**(301) 662-7702**  
8 a.m. - 5 p.m.

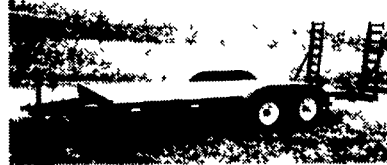
**• Kaufman Trailers •**



20' Lowboy Gooseneck, 14,000 GVW **\$3,300**



24' Tandem Deckover Gooseneck, Flip-Up Ramps 14,000 lb GVW **\$3,750**



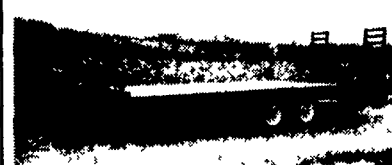
18' Farmers Contractor Special, Flip-Up Ramps, 12,000 lb Drop Foot Jack, 83" Between Fenders, 10,000 lb GVW **\$2,750**  
12,000 lb GVW **\$2,850**



28' Tandem Dual Gooseneck, Flip-Up Ramps 20,000 lb GVW **\$6,300**



50' 3 Car Wedge Trailer, Triaxle, Radial Tires. **\$6,800**



20' Tag Along Deck Over, Flip-Up Ramps 10,000 lb. GVW **\$3,400**  
14,000 lb. GVW **\$3,600**

56' 4-Car Wedge Trailer  
32' 2-Car Wedge Trailer  
32' 2-Car Tag-Along Trailer

96 Freightliner Truck Tractor FLD120064ST, Detroit 12.7L 470HP, 9 Spd, AR Susp. **\$19,000**

**Weaver's Truck and Equipment Sales**

Milton, PA **570/523/9598**

**FISHER TRAILER SALES**

**SPECIAL \*\* Moritz - slant load Horse/Stock Combo \$3,800**

Standard features: 2-horse 13' Bp, slant divider, 7' tall, bridle rack, saddle racks, swinging slant wall for dress room, 1-slat sides, treated floor, interior light, caulked seams, torsion axles, 4 wheel brakes, pinstriping, 7 colors, 2-5/16 coupler, breakaway kit, spare holder & wheel, 2 coats primer, sealed beam lights, 2 coats paint, semi-round nose

Other options available, other sizes available. Trailer in stock or on order

**MORITZ -**  
Stock - 13' Bp (1) red (1) dk grn **\$3,400**  
16' Bp red 6'8" wide **\$3,900**  
13' Gn dk grn 6'8" wide **\$4,400**  
16' Gn charcoal 6'8" wide **\$4,900**

**Horse/Stock Combo**  
13' Bp (1) blue (3) charcoal (1) maroon (1) dk grn (1) red **\$3,800**  
16' Bp charcoal 6'8" wide **\$4,600**

**Flatbed (SPECIAL REDUCED PRICE)**  
18' Gn 6'10" wide red **\$3,000**  
20'+5' tail Gn 8'4" wide red **\$4,550**

**PONDEROSA -**  
Stock - 12' Bp brn **\$3,200** 14' Bp charcoal **\$3,300**  
USED - 16'x7'x7' Gn '81 Moritz stock **\$1,000**  
24' Gn '88 Sundowner 4' dress room **\$2,500**  
2' Horse TB Gn '87 Valley **\$1,300**  
3-horse Bp '72 Imperial **\$600**  
10' Bp stock '85 Moritz **\$1,300**

Full Notary Service Temporary Tags

223 Middle Rd. McVeytown, PA 17051  
Phone 717-242-0941 Fax 717-242-4377  
5 miles west of Lewistown Rt 22 to Strodes Mills

**BRUBAKER'S AUTO SALES**

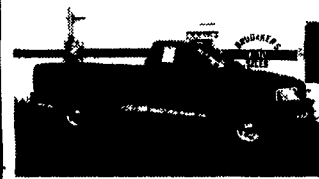
PH. 717-866-5237

Hours: Mon.-Fri. 8 a.m.- 9 p.m.; Sat. 8 a.m.- 6 p.m.

ROUTE 422 MYERSTOWN, PA



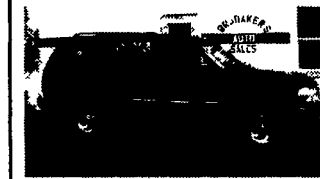
99 FORD F-250 SUPER DUTY 4X4 Quad-Cab, White, V10, 5 Sp, AM-FM ST, AC, 47,820 Mi **\$19,900**



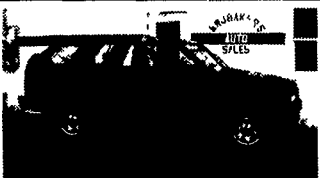
98 FORD F-150 XL 4X4, "Off-Road" Red/Gray, 4.6 V8, 5 Sp, AM/FM Cas, AC, 49,585 Mi **\$14,900**



98 CHEVY ASTRO AWD, White, V6, AT, AM-FM Cas, AC, PW, PL, CC, Tilt, 60,875 Mi **\$13,600**



97 MERCURY MOUNTAINEER AWD, Black/Gray V8, AT, AC, PW, PL, CC, Tilt, AM/FM/CD, 77,275 Mi **\$12,900**



97 ISUZU RODEO 4x4, Green, V6, 5 Spd AM-FM Cas, AC PW, PL, CC, Tilt, 38,265 Mi **\$13,900**



96 FORD F-150 XL 4x4, Green, 300 6 Cyl AT, AM-FM ST, AC, 59,975 Mi **\$12,600**



95 FORD F-350 XL, 4 Dr, 2WD, Green, 351, V8, 5 Sp, AM-FM ST, 102,779 Mi **\$12,600**



93 FORD E-250 CARGO VAN, Maroon, V6, AT, AM-FM Cas, 73,180 Mi **\$7,900**

**Int. Truck Model 1954, 1989, GVW 32,800, Only 111,000 Miles w/Jerre-Dan 15 Ton Rollback \$25,000 (215) 943-8305**

**EBY USED EQUIPMENT LIVESTOCK BODIES**

- 12'x96"x6'9" Eby
- 14'x96"x6'3" Eby
- 9'x94"x6'9" Eby w/Deck Rail
- 19'x96" Eby w/Deck Rail
- 15'x96" Eby
- 10'x96"x6'6" Eby Above Bodies Would Make Great Poultry Bodies

**NEW LIVE FLOOR BODY**

- Eby 26' Long x 96" wide, 90" high - Keith Two Way Floor with Tow Motor Package Electric Tarp

**GOOSENECKS**

- 1985 4 Star Alum. 12'x7' x6'9" Bumper Hitch

**M.H. EBY, INC.**

1194 Main St. (Route 23) Blue Ball, PA 17506 (717) 354-4971 (800) 292-4752  
4435 State Route 29 West Jefferson, OH 43162 (614) 879-6901 (800) 752-0507

**ALUMINUM DUMP TRAILERS FOR SALE. MANY SIZES AVAILABLE. 610-921-1971**

**WANTED NOW!**

**3 Van Trailers for Storage 717-865-7440**

**75 Ford L800 Tandem Grain Truck w/20' Midwest Body & Hoist, Good Condition, \$5,000 908/359-5934**

**WHEN AGRICULTURE IS YOUR LIFE,**



Eby's complete line includes models for every requirement:

**BODIES**

- Gooseneck Trailers** - Lengths 14--32', Widths 7', 7'6", 8' and 8'6".
- Bumper Hitch Trailers** - Lengths 12' - 18'
- Grain Bodies** - Lengths to 24', plus landscape and general purpose dumps to 12'
- Flatbed Bodies** - Lengths to 32' in 5 widths
- Landscape Bodies** - Lengths to 12'

**GOOSENECKS**

**BUMPER HITCHES**



Eby is the leading manufacturer of aluminum bodies and trailers for agri-transportation. Our products are designed for superior strength, reduced weight for greater payload capacity, minimum maintenance and higher resale value. In addition to premium standard features, we offer full custom options built to your specs.

For quality equipment and customer service that works as hard as you do, nobody offers more than EBY.



Blue Ball, PA 800-292-4752

**THE EQUIPMENT CHOICE IS EBY.**