

ALUM-LINE, INC.

The Leader In Heavy Duty Construction

"More Trailer - Less Money"



All-Aluminum Livestock Trailers, Bumpers & Goosenecks • 8' to 39' Lengths • Double Deck Package Available

"The Finest Truck Bed You'll Own"

All-Aluminum Stake Body Beds • 6' To 24' Lengths • Many Standard & Optional Features • All Types of Tool Boxes



Also from Alum-Line, a complete line of aluminum pickup boxes and truck tool boxes

Wolfe Auction
9801 Hansonville Rd.
Frederick, MD 21702
800-443-9580



343 Christiana Pike
Christiana, PA 17509
Answering Service 1-610-593-2753



Wetline Installation

Complete Hydraulic Repair Service and Sales



Sales and Service on Hydraulic Motors Pumps Hoses Accessories and Honda Engines

Dry storage trailer, 48x102, could be repaired to use on road, \$2000 obo. 1-800-839-3338

1971 Int dump truck, single axle, VS549 air brakes, \$3500 obo. 610-287-7894

'93 Chevy Cheyenne 2500, 3/4 ton pickup, 305 auto, PS, PB, 7,200 GVW, blue, 128,000 miles, latest inspection, good work truck, \$3,675. 717-733-2873

1997 green Chevy Tahoe, 4WD, 4-dr, fully loaded, like new, 42,000 mi, \$23,900/obo 610-269-7900.

STOCK GOOSENECK 16x6x6', STOCK BUMPER 16x6x6' 3 HORSE SLANT OPEN STOCK w/ dressing rm & rear tack. Used 2 horse 1986, call for pricing. New & Used trailers available. NETCO Trailer Sales, 410-838-1282.

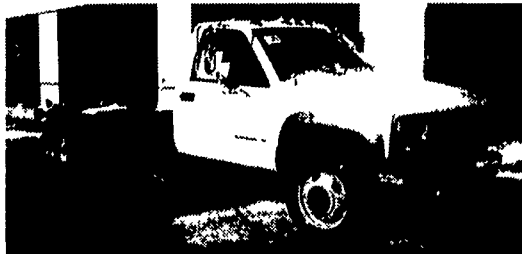
1987 Volvo White tractor, single axle or with tag axle, conventional, 320 Detroit, good cond. \$4800. 717-776-7725

-
- 1991 Volvo Triaxle - 20' aluminum dump (34 yards) water tight gate, turn buckles, roll tarp \$30,000
- 1977 Int. Coe 13 spd., Detroit, wet line, new brakes, and 11/22.5 tires, good farm or yard truck..... \$2,000
- 1983 Jeep CJ7, black, hard and bikini top, 105K..... \$2,000
- 1974 Hough 100 diesel rubber tire loader, 3-4 yard bucket, good condition, 4 tire chains and 2 new tires... \$6,000
- 24' frame from dump trailer, 10.20 tires.. \$500
- Tanker 1 comp. 5800 gallon 10.20 tires, frame bad from dollies forward, good for storage..... \$500
- 1977 Ford 9000, Cummins, air brakes, 33 GVW, 9' bed w/chute, plow, cinder spreader, central hydraulics, pintle hook . \$7,000
- **Elgin Cartage**
898 Old Rt. 22, Lenhartsville, PA
610-756-4343
-



OUTTEN

TOTAL TRANSPORTATION CENTER



2000 CHEV 3500 CAB & CHASSIS
AT, A/C, 15,000 GVW, Stock #33707



1999 CHEVROLET SUBURBAN 2500
4x4, 454 V8, AT, Dual A/C, Most Options, Tow Pkg., 16,000 Miles **\$30,995**

Outten Hamburg Rt. 61, Hamburg PA
1-800-451-2333 • 610-562-2216

VALLEY VIEW TRAILER SALES

Tyler Hill, PA

570-224-6888

570-224-4020

Authorized M.H. Eby Dealer
Aluminum Trailers for

LIVESTOCK • HORSES • CATTLE
TRUCK BODIES

CORNPRO STEEL LIVESTOCK TRAILERS & FLATBED TRAILERS

WE OFFER ALL TYPES OF TRAILER
REPAIR, HOOKUPS AND SERVICE
DEALER FOR NORTHEASTERN

PA, NORTHERN NJ &
SOUTHERN NY

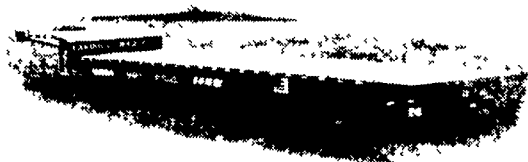
**Eby Maverick
Aluminum
Gooseneck 16x7x7
\$9,800**

NORTH EAST ENTERPRISES

**WORLD'S LARGEST STOCKING
LANDOLL And TRAIL-EZE DEALER!
SALES - SERVICE - PARTS - RENTALS**



Stop In
& See the New
Limited Edition
Fontaine
Specialized
LP50



New 2000 Landoll 660A 48' & 53'
Traveling Axle Trailer, Many Different
Options In Stock!



2000 Trail-Eze 20 & 25 Ton Heavy
Duty Tilt Deck Trailer, Pintle Hitch,
Air Brakes, In Stock Now!!



2000 Trail-Eze 10 Ton Ramp Trailer,
24' Deck (19' Flat + 5' Beavertail),
Electric Brakes, Pintle Hitch,
In Stock!



2000 Trail-Eze 20 Ton Sliding Axle -
Tilt Deck Trailer, Pintle Hitch Trailer.
30' Deck, Air Brakes, In Stock!!



New "2000" Landoll 323AG-48
Detachable 35 Ton Air Ride, 28x102"
Drop Side with 24" Pull-Out Side
Extensions, Self-Contained.



New Fontaine Specialized 35, 50 &
55 Ton Detachable Gooseneck.
Many Options Available.
Call For Your Best Price.

CALL TOLL FREE 1-877-526-3655

ASK FOR WAYNE BROWN
E-MAIL: wayne@neent.com