

Potato Leafhopper Control

(Continued from Page A22)
Following certain procedures and keeping careful records can

help spray operators build up a "defense," Wagner said, against spray liability issues.

Del Voight, regional agronomy extension agent, provided a rainfall history of the year and looked at emerging pest problems.

He noted the emergence of slugs in fields.
"I had not seen that many

slugs before in my life, until this year," Voight said.

Guernsey Youth Association To Conduct Fundraiser At Fair

TIMONIUM, Md. — Junior members of the Maryland Guernsey Youth Association will teach fairgoers how to milk cows by hand during Guernsey Milk Clinic fundraiser, Friday, Aug. 25, Saturday, Aug. 26 and Monday, Aug. 28, from 11 a.m.-3 p.m. in the Maryland State Fair's Cow Palace.

The Guernsey Milk Clinic will provide educational information about Maryland's dairy industry and this special breed of dairy cows. And, for a small fee, interested fairgoers can take a lesson and try their hand at milking a cow. All participants will learn a new skill and be treated to a free carton of ice-cold milk.

"Through this event, we hope to bring urban people closer to

agriculture and introduce them to our favorite breed of cow — the Guernsey," said Maryland Guernsey Youth Committee member Debra Summerall. "There are very few people who have ever hand-milked a cow.

The 119th Maryland State Fair, which will offer a variety of livestock and horse shows, midway rides, thoroughbred horse racing, arts and crafts and home arts exhibits, runs from Friday, Aug. 25 through Monday, Sept. 4 at the Timonium Fairgrounds in Baltimore County. Early risers are welcome to attend livestock and horse shows at 9 a.m. Exhibit halls are open from 10 a.m.-10 p.m. The Midway opens at 10

a.m. on weekends and noon on weekdays.

Admission is \$4 for adults and children under 12 are admitted free. Rides are individually priced.

Thoroughbred horse racing begins Saturday, Aug. 26 and runs through Labor Day. Post time is 1 p.m. Admission to the race track is included in the admission price of the fair. Parking on the fairgrounds for a minimal fee and free parking at the park and ride location on Deereco Road are available on a first-come, first-serve basis.

For information, call 410-252-0200, ext. 227 or visit the Maryland State Fair web page at www.marylandstatefair.com.

Slugs leave ragged holes in leaves beginning with lower leaves. Leaves may appear shredded. Silvery slime trails are telltale signs of slugs.

There is no economic threshold for slugs. If leaves are significantly defoliated, field has a grayish cast, and stand is threatened, control may be needed.

There are no highly effective compounds available to control the slugs. Commercial bait material can provide some control.

Dennis Calvin, crop entomology specialist, spoke about European corn borer and hybrid management at the field day.

More information from the field day is scheduled for the next issue of *Corn Talk*, set to appear in *Lancaster Farming* Oct. 14.



Dennis Calvin, crop entomology specialist, spoke about European corn borer and hybrid management at the field day.

ANNOUNCING OUR RETURN TO POWER

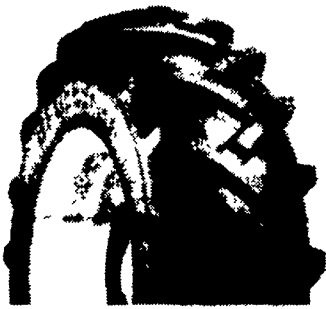


MICHELIN

Ag & Industrial

BFGoodrich

Farm & Ranch



"Great" B.F. GOODRICH POWER GRIP BIAS R1
Tube Type - 45° Tread Design

13.6 x 28 6 ply **\$168**
18.4 x 34 6 ply **\$329**
18.4 x 38 6 ply **\$346**



"Greater" B.F. GOODRICH POWER RADIAL 80
Radial R1W, Tubeless 45° Tread Design

13.6R28** **\$368**
18.4R34* **\$464**
18.4R38* **\$528**



"Greatest" MICHELIN AGRI-BIB
Radial R1W, Tubeless, 45° Tread Design

13.6R28** **\$440**
18.4R34** **\$696**
18.4R38* **\$592**



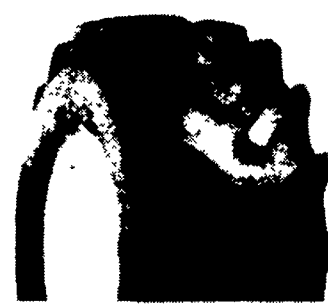
B.F. GOODRICH POWER STEER
3 Rib Bias, Tube Type

6.50-16 6 ply **\$45**
7.50-16 8 ply **\$59**
10.00-16 8 ply **\$98**



NEW MICHELIN SKID STEER NEW
2.25 Ribs, Tubeless

10R16.5 8 ply **\$244**
12R16.5 10 ply **\$353**
Non Directional
3-4 Times the Wear as Bias



MICHELIN BACKHOE INDUSTRIAL
XM27 - R4 Radial, Tubeless

17.5R24 **\$452**
19.5R24 **\$544**
19.5R24 Reinforced **\$624**

OTHER TIRE SIZES AND TUBES ALSO AVAILABLE



We are proud to support FFA

HIGHLANDS' TIRE & SERVICE CENTERS



1257 Mt. Holly Pike
Carlisle, PA 17013
(717) 243-1382
(800) 745-8069
(717) 243-6014 Fax

6551 Tilghman
Allentown, PA 18106
(610) 481-0076
(888) 772-8353
(610) 481-0075 Fax

344 Green Spring Road
Newville, PA 17241
(717) 776-5127
(717) 776-4484 Fax

1607 Gabler Road
Chambersburg, PA 17201
(717) 267-3600
877-222-0051
717-267-0034 Fax

Berkeley Tire
79 State Street
Everett, PA 15537
(814) 652-2221
(800) 829-4213
(814) 652-2936 Fax

Allen Hoover Repair Inc.
RR1, Box 227
Mifflinburg, PA 17844
570-966-3821

Mar-Bar Tire Service
4285 Hanover Road
Hanover, PA 17331
717-663-6412

Smith's Farm Equipment
30 Acker Road
Newport, PA 17074
717-567-3562

Fulmer Bros. Tire Service
Route 6, Wysox, PA 18854
570-265-6159
Elmira Street, Sayre, PA 18840
570-888-7724

WATERLESS TOILETS

"SUN-MAR" Composting Toilets

Several models available including non-electric

- NO Septic System
- NO Chemicals

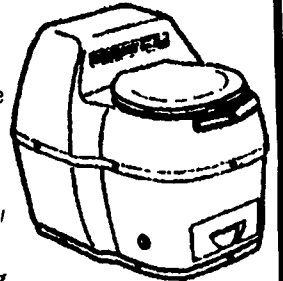
Save the Environment!
Recycle Back to Nature!

FREE:

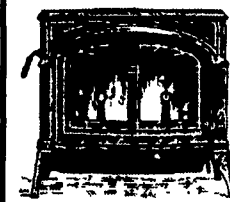
12 Page Color Catalog

We Perform Septic Inspections & Certifications

ECO-TECH Call Today 1-800-879-0973



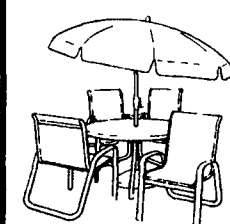
• STOVES • HAMMOCKS • GAS GRILLS
• PATIO FURNITURE & MUCH MORE.



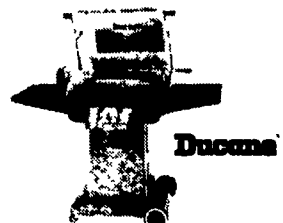
• Wood • Coal
• Gas



Vermont Castings



TELESCOPE PATIO FURNITURE



1066 Division Hwy
322 East
Ephrata, PA 17522
www.bowmansstove.com

(717) 733-4973
1-800-642-0310

BOWMAN'S STOVE & PATIO

Mon. Tues., Wed 10 to 6
Thurs., Fri 10 to 8
Sat 10 to 4

