

## 2<sup>nd</sup> Annual - Largest Weed in Pennsylvania Contest

Sponsored by Penn State University's Department of Agronomy  
and Ag Progress Days

**Location & Dates:** To be held during Ag Progress Days

**Entry:** Deliver your largest weed entry to the Crops & Soils Tent (East 5th Street) before 12:00 noon on Tuesday, Wednesday, or Thursday at Ag Progress Days

### Three Entry Categories:

#### Weed that Grew in a Field or Barnyard (with 2 subcategories)

- 1 Broadleaf Weeds (e.g. redroot pigweed, lambsquarters, velvetleaf, ragweed)
- 2 Grassy Weeds (e.g. johnsongrass, shattercane, giant foxtail, fall panicum)

#### Weed that Grew at a Residential Site or Garden

Any Broadleaf or Grassy Weeds (e.g. redroot pigweed, lambsquarters, velvetleaf, ragweed, giant foxtail, quackgrass, etc.)

#### Kids Weedz Category (for ages 12 and under)

Any Broadleaf or Grassy Weeds (e.g. redroot pigweed, lambsquarters, velvetleaf, ragweed, giant foxtail, quackgrass, etc.)

**Prizes:** Will be awarded daily! Don't need to be present to win

### Rules:

- Only 2 weeds per person may be submitted during extent of contest
- Weeds must be grown in Pennsylvania
- Weeds must be cut at soil level (i.e. no roots)
- Entries must remain on display during Ag Progress Days

### Judging:

- Completed by Agronomy Department personnel
- Largest weed will be based on weed height + maximum width when laying flat on the ground

EntryForm:

Complete form cut along line and attach to weed

Name: \_\_\_\_\_

Address: \_\_\_\_\_

City: \_\_\_\_\_ Zip \_\_\_\_\_

Phone: (\_\_\_\_) \_\_\_\_\_  
Entry Category (please circle one) Farm Residential Kids

Weed Type (please circle one) Broadleaf Grass

## Second Annual Largest Weed In Pa. Contest At Ag Progress Days

ROCKSPRING (Centre Co.) — Ag Progress Days will be the site of the second annual largest weed in Pennsylvania contest.

Deliver your largest weed entry to the Crops and Soils Tent (East 5th Street) before noon on Tuesday, Wednesday, or Thursday at Ag Progress Days.

There are three entry categories:

- Weed that grew in a field or barnyard (with two subcategories), broadleaf weeds, (for example, redroot pigweed, lambsquarters, velvetleaf, ragweed), and grassy weeds (for example, johnsongrass,

shattercane, giant foxtail, or fall panicum).

- Weed that grew at a residential site or garden. Any broadleaf or grassy weeds (for example, redroot pigweed, lambsquarters, velvetleaf, ragweed, giant foxtail, quackgrass, etc.).

- "Kids Weedz" category (for ages 12 and under). Any broadleaf or grassy weeds (for example, redroot pigweed, lambsquarters, velvetleaf, ragweed, giant foxtail, quackgrass, etc.).

Prizes will be awarded daily. You don't need to be present to win.

The rules:

- Only two weeds per person may be submitted during extent of contest.

- Weeds must be grown in Pennsylvania, cut at soil level (no roots) and entries must remain on display during Ag Progress Days.

Judging:

- Completed by agronomy department personnel.
- Largest weed will be based on weed height plus maximum width when laying flat on the ground.

Complete form, cut along line, and attach to weed.

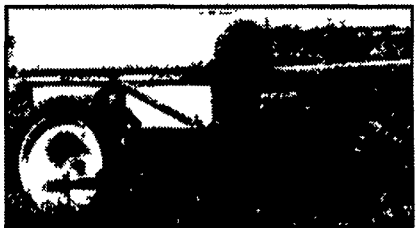
## PFGC Supporting Organizations

Aaron King Seeds  
ABI Alfalfa  
Agway  
Ampac Seed Company  
Cargill Animal Nutrition/Youngs  
Chemgro  
Delmhorst Instrument Co.  
Doebler Hybrids, Inc.  
Ernst Conservation Seed  
Farmshine  
Genex/C.R.I.  
Hoffman Seeds, Inc.  
Lancaster Farming  
P.L. Rohrer & Bro., Inc.  
Pioneer Hi Bred Int.  
Moyer and Son, Inc.  
Seedway  
Skyview Laboratory, Inc.  
Sollenberger Silos Corp.  
Webbs Super-Gro  
W-L Research

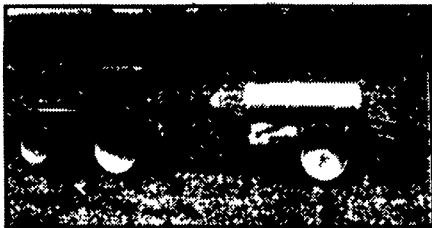


### The Right Equipment For Your Application Jobs

## NEW PRODUCTS FOR 2001



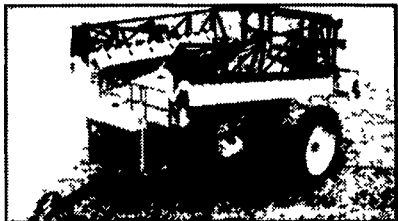
Model 1400 Liquid Fertilizer Applicator



Model 670 Trailer Sprayer



Model 1500 Nurse Trailer



High Clearance Sprayers  
Rubber torsion suspension design to cushion any bouncing action.



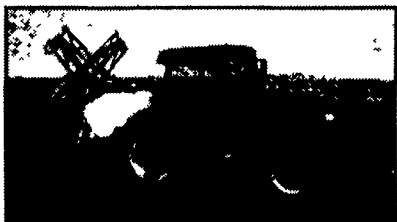
Skid-Mount Sprayers  
Built-In Storage Stands for Easy On and Off Truck.



Lay-By Spray-Hood  
Achieve Accurate Directed Spray Applications in Roundup® Ready Crop



Redball Cultivating Sprayer  
One Pass Operation.  
Save Time, Fuel and Herbicide



Three-Point Hitch Sprayer  
Front-Mount and Side-Mount Also Available

- Sturdy
- Durable
- Economical



DELANE

TeeJet®

Hypro



SCOT

RAVEN INDUSTRIES



DICKEY-john



CALL  
800-760-8800

for the location of your nearest Ag-Chem dealer



TOP QUALITY HAY & HAYLAGE

Straw & Grain  
Freezer Beef & Pork  
Holloway Brothers

1161 Stafford Road  
Darlington, MD 21034  
410-457-4678