

**National Carlot Beef Report**

Des Moines, IA  
Thurs., July 13, 2000  
Report Supplied By USDA  
USDA NATIONAL CARLOT BEEF REPORT (includes major production areas in the Midwest and TX) as of 11:15 AM NOON. COW & BULL CARCASS FOB OMAHA Loads Reported.  
Compared to Wednesday's 3:00 P.M. report: Cow and bull carcasses not established.

UT,brk 2-4 450 /up unq UT,bng 1-3 400 /up unq Cutter 1-2 350 /up unq Bulls YG 1 500 /up unq  
COW & BULL CARCASS CAF WEST COAST Loads Reported.  
Compared to last week:  
Market for Week Ended: July 7, 2000  
Lds Price Range UT,brk 2-4 450 /up UT,bng 1-3 400 /up 74.00 Cutter 1-2 350 /up 74.00 Bulls YG 1 500 /up  
BONELESS PROCESSING BEEF/BEEF TRIMMINGS 23.0 Loads Reported.

Boneless processing beef not established; 65% 1.00 to 2.00 lower.  
Demand and offerings light.  
FOB OMAHA BASIS: Chm Ln Lds Price Range Wtavg 90% fr 102.0 102.00 A 90% fz unq 85% fr 91.5 - 97.5 95.37 A 85% fz 75% fr unq 75% fz 65% fr 4 65.0 65.00 65% fz 50% fr 50% fz 50% bx Bull 92-94 unq

FOB EAST TEXAS AND OKLAHOMA: Chm Ln Lds Price Range Wtavg 90% fr 102.0 - 105.0 103.25 A 90% fz unq 85% fr 85% fz 75% fr 75% fz 65% fr 65% fz

CAF NORTHEAST AREAS: Chm Ln Lds Price Range Wtavg 90% fr 19 106.0 - 110.0 107.58 90% fz 85% fr unq 85% fz 75% fr 75% fz 65% fr 65% fz

CAF WEST COAST BASIS Market for Week Ended: 7-7-2000 Chm Ln Lds Price Range Wtavg 90% fr 114.50 114.50 90% fz unq 85% fr 104.50 -106.50 105.55 85% fz unq 75% fr unq 75% fz unq 65% fr 69.00 - 71.00 69.92 65% fz unq 50% fr 41.50 - 43.50 42.21 50% fz unq.

**Morrison's Cove Livestock**

Martinsburg, Pa.  
Report Supplied by Auction  
Monday, July 10, 2000  
CATTLE: 89 HEAD.  
STEERS: CHOICE 68.00-72.00, GOOD 64.50-67.50.  
HEIFERS: CHOICE 67.50-71.00, GOOD 62.00-67.00, UTILITY AND COMMERCIAL 38.00-46.00, CANNER AND LOW CUTTER 20.00-37.50.  
BULLOCKS: 51.00-56.00.  
BULLS: YG#1 48.00-55.00.  
FEEDER CATTLE: STEERS 59.00-75.00, BULLS 58.00-75.00, HEIFERS 50.00-63.00.

CALVES: 101. PRIME, NO MARKET TEST, CHOICE 85.00-98.00, GOOD 65.00-79.00, STANDARD 20.00-55.00; HOLSTEIN BULLS 90-130 LBS. 60.00-110.00, HOLSTEIN HEIFERS 90-130 LBS. 150.00-280.00.  
HOGS: 249...US#1-2 46.00-48.00, US#1-3 44.00-45.00.  
SOWS: US#1-3 32.00-40.00.  
BOARS: 14.00-29.00.  
FEEDER PIGS: 61. US#1-3 20-50 LBS. 14.00-66.00.  
SHEEP: 43 HEAD. CHOICE LAMBS 85.00-90.00, GOOD LAMBS 80.00-85.00, SL. EWES 15.00-32.00.  
GOATS: 10.00-89.00.

**Mercer Livestock Auction**

Mercer, Pa.  
Tuesday, July 11, 2000  
Report Supplied By PDA  
CATTLE 359...steers were active. SLAUGHTER STEERS: few High Choice and Prime 72.00-73.00, Choice 2-4 1050-14360 lbs 66.505-69.25, Select 1-3 55.00-64.00, Standard 1-2 44.50-52.50.  
HOLSTEINS: Choice 2-3 1150-1550 lbs 57.00-62.00, Select 1-2 50.50-57.00.  
HEIFERS: Choice 2-4 1080-1400 lbs 65.00-69.25, Select 1-3 61.00-64.50, Standard 1-2 45.00-51.00.  
COWS: Breakers 75-80% lean 35.00-45.00, one 50.50, Boners 80-85% lean 40.50-47.00, Lean 85-90% lean 23.00-34.00. Shells down to 20.00.  
BULLS: Yield Grade 1 965-1650 lbs

55.00-61.00, Yield Grade 2 930-1450 lbs 45.00-48.00.  
CALVES 153...VEALERS: Good 70-190 lbs 20.00-50.00. FARM CALVES: No 1 Holstein bulls 85-120 lbs 100.00-130.00, No 2 85-110 lbs 85.00-100.00; No 1 Holstein heifers 90-105 lbs 245.00-290.00.  
Beef type bulls and heifers 70-190 lbs 110.00-142.50.  
HOGS 104...BARROWS AND GILTS: 49-54% lean 225-260 lbs 44.50-45.00.  
SOWS: 37.00-38.00.  
FEEDER PIGS 24...1-3 50-60 lbs 36.00-41.00. - per head.  
SHEEP 0...NO MARKET TEST!  
GOATS 0...NO MARKET TEST!

**National Carlot Pork Report**

Des Moines, IA  
Thurs., July 13, 2000  
Report Supplied By USDA  
USDA NATIONAL CARLOT PORK REPORT Equated to FOB Omaha Basis as 11:15 AM Compared to Wednesday's Close: Fresh loins and butts weak; sknd. bone-in hams 1.00-2.00 higher; scls. bellies 1.00-3.00 lower; lean trimmings steady to 1.00 higher.  
Trading slow to moderate, with light to moderate demand and offerings.  
LOADS PORK CUTS : 22.13 NOON Loads TRIM/PROCESS PORK : 15.5 REPORT FRESH PORK CUTS PRICE RANGE WGTD AVG.

LOINS, BONE-IN Primal Cutout Value 100.63 ABP Regular 14-18 106.00 106.00 LdsPrice RangeWghtd Avg.  
1/4" Trim 13-19 2.0 130.00 130.00 1/4" Trm/less 13-19 132.00 - 140.00 137.52 A 1/4" Bladeless 1/4" Trim 19-23 127.00 127.00 B combos 23/Up LOIN-S,CNTRCUT,10-11 RIB,1/4"TRM Tender-in FLO 8-13 171.00 171.00 B Tender-out FLO 8-13 BNLS Strap-on 5-9 194.00 - 196.00 194.40 A BNLS Strap-off 5-9 205.00 - 212.00 210.33 A WHLE BNLS LOINS 7-11 BNLS SIRLOIN .75-1 0.13 126.00 126.00 BONE-IN SIR 2.5-3.5 81.00 81.00 E BLADE ENDS 2-4 TENDERLOIN 1.25/DN 342.00 342.00 B LOIN BACKRIB (BOXED) FRSH/FRZN 1.5/DN " 1.75/DN 414.50 414.50 B " 1.75-2.00 374.00 374.00 B " 2.00/UP 355.00 355.00 B LOIN BACK-

RIB (COMBOS) 1.75/DN PICNIC Primal Cutout Value 37.67 ABP Untrmd Picnic 39.00 39.00 D LdsPrice Range-Wghtd Avg.  
Smkr Trm, RS, combo 37.00 37.00 D Smkr Trm, SS, boxed 48.00 - 49.00 48.33 A PICNIC CUSHION MEAT Combo 92% Fresh Boxed 92% Frozen unq BOSTON BUTT Primal Cutout Value 71.10 ABP Regular 4-8 64.00 - 68.00 65.60 LdsPrice Range-Wghtd Avg.  
1/4" Trim 4-9 3.0 85.00 85.00 1/4" Trim 4-9 95.00 95.00 A 1/4" Trim Neck-off 2.0 98.00 98.00 1/4" Trim Neck-off 111.00 111.00 B BNLS, Cellar Trim combo's 9/UP SPARERIB - Primal Cutout Value 105.78 ABP 1.5-3.5 94.00 - 95.00 94.50 LdsPrice Range-Wghtd Avg.  
3 BAG/3 PCVAC 3.8/DN 1.0 115.00 - 118.00 116.50 2 BAG/3 PCVAC 3.8-5.8 96.00 - 115.00 106.00 A COMBOS 3.8/DN 101.00 101.00 A COMBOS 3.8-5.8 SKINNED HAM Primal Cutout Value 55.64 ABP Untrm Sel 17-20 58.00 - 60.00 58.80 A ABP Untrm Sel 20-26 58.00 - 60.00 59.63 LdsPrice Range-Wghtd Avg.  
BONE-IN, TRIMMED 17-20 Trim Spec 1 62.00 - 64.00 62.80 A 20-23 Trim Spec 1 6.0 64.00 64.00 23-27 Trim Spec 2 20-27 Trim Spec 2 27 /up Trim Spec 2 BONELESS MUSCLES 94-96% 3 Muscle Group 4 Muscle Group 118.50 - 122.00 119.36 A 5 Muscle Group 123.00 123.00 B Inside Outside Knuckle Lite Butt Inner Shank HAM TRIMMINGS (CHEM LEAN) Combo 72% Fresh 53.50 53.50 A Boxed 72% Frozen Combo 90% Fresh Boxed 90% Frozen Outer Shank Frozen BELL, SEEDLESS Primal Cutout Value 89.38 ABP Untrmd 12-14 86.00 86.00 ABP Untrmd 14-16 87.00 - 88.00 87.67 ABP Untrmd 16-18 83.00 83.00 A LdsPrice Range-Wghtd Avg.  
SKIN-ON, TRIMMED Fresh 10-12 1.0 80.00 80.00 Fresh 12-14 1.0 90.00 90.00 Fresh 14-16 3.0 91.00 - 92.00 91.67 Fresh 16-18 87.00 87.00 A Fresh 18-20 81.00 81.00 A Fresh 20-25 SKINLESS, SQUARED Fresh 9-11 Fresh 11-13 Fresh 13-15 Fresh 15-17 SKINLESS, CENTER CUT Fresh 8-10 Fresh 10-12 Fresh 12-14 Fresh 14-16 PORK TRIMMINGS/BONELESS PROCESSING PORK (CHEMICAL LEAN) ABP:Cmbo 42% Frsh 28.00 - 28.50 28.27 ABP:Cmbo 72% Frsh 50.00 - 53.50 51.63 ABP:Cmbo Bnls Pic Frs 52.00 - 53.00 52.73 A ABP:Cmbo Jowl Frsh LdsPrice Range-Wghtd Avg.

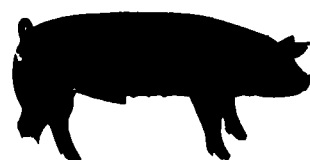
Combo 42% Fresh 5.5 29.50 - 30.00 29.82 Boxed 42% Frozen 37.50 37.50 D Combo 72% Fresh 10.0 51.50 - 55.00 53.33 Boxed 72% Frozen 60.00 60.00 E BONELESS PICNIC MEAT Combo 72% Fresh 53.00 - 54.50 54.14 A Boxed 72% Frozen 59.00 59.00 B SKINNED JOWLS Combo Fresh Boxed Frozen 41.00 41.00 D FAT, VISUAL TRACE OF LEAN Combo Fresh 26.00 26.00 D Boxed Frozen TRIM, VISUAL TRACE OF LEAN Combo 12-16% Fresh Boxed 12-16% Frozen Adjusted Base Price Weighted average price for non-value added product calculated by subtracting the packer's value differential from the reported price of value-added product.

Specifications for all reported cuts available STANDARD ADJUSTMENTS FOR CONVERTING TO VACUUM BASIS

Loins (13-23's): Butts (4-9's): Vacpak : report basis Vacpak : report basis Gas Pak : minus \$2.00 Gas Pak : no price differential Paper : minus \$5.00 Paper : minus \$3.00 Combo : minus \$6.00 Combo : minus \$4.00 Spareribs: Adjustments for Trim - Vacpak : report basis Bone-in Center Cut Loins: Polywrap: minus \$7.00 False Lean Off : basis Tenderloins: False Lean On : minus \$5.00 Vacpak : report basis Boneless Center Cut Loins: Polywrap: minus \$10.00 1/4" Trim : report basis 1/4" Trim : add \$6.00.1

**New Holland Horses**

New Holland Sales Stables  
Report Supplied by Auction  
Monday, July 10, 2000  
176 HEAD, MARKET LOWER.  
WORK HORSES 785.00-1000.00.  
DRIVING HORSES 510.00-1025.00.  
RIDING HORSES 485.00-985.00.  
BETTER RIDING 1085.00-1400.00.  
PONIES 160.00-400.00.  
LARGE PONIES 550.00-610.00.  
COLTS 250.00-385.00.  
REGISTERED COLTS 240.00-550.00.

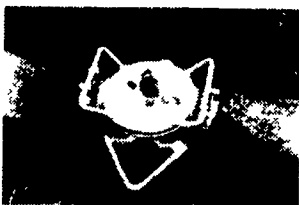


**BAARS IRRIGATION SYSTEM**



Like A Portable Rain Shower - Any Time, Anywhere!

- Very economical
- Fast and easy to operate
- Very robust
- Energy efficient
- Perfect water distribution
- Ideal for areas with hills or trees
- The quality of a handline with the ease of a reel-gun



- Makes irrigation 'easy and practical'
- Made by a farmer, for a farmer

Ideal for irrigating pastures and hayfields.

**AARON M. KING SEEDS**

Specializing in high quality forage and grazing since 1993  
Fairview Fruit Farm  
96 Paradise Lane, Ronks, PA 17572  
717-687-6224

Distributor for Barenbrug Seeds  
Call for the name of your nearest dealer

**TimberLeads**

"Money DOES Grow on Trees"



The best price for your standing timber may come from a buyer 100 miles away! One FREE call to TimberLeads connects you to timber buyers in Central PA. Our FREE service can help you receive a competitive price for the timber on your land. Landowners call TimberLeads today!

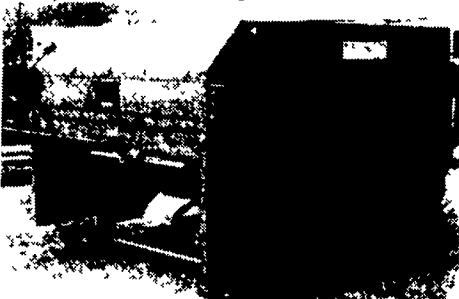
1-877-386-7595

www.timberleads.com

**See Us About The New I.H. Rissler 2000 Series**



GOOD USED MIXERS FOR SALE



- Oswalt 230 Trailer Mixer In Working Cond
- 150 Rissler Mixer (Good Condition)
- New 300 Oswalt Mixer
- 100' center charge Jamesway Feeder
- VanDale 3400 Manure Tanker (New)
- Starline Rollermill
- Starline Centrak 18 ft Ring Drive Unloader
- 24 Ft Big Jim Unloader
- Patz 24 Ft. Ring Drive Unloader New in 1994 (In Good Condition)

All In Good Condition

**★ STAR SILO ★**

Myerstown, PA  
800-431-7709

**The New Heavyweight Champion**

**WITMER'S, INC.**

39821 State Route 14A  
Columbiana, OH 44408-9540  
(330) 427-2147

