

35

**TRUCKS  
AND  
TRAILERS**



**USED  
EQUIPMENT**

**LIVESTOCK  
BODIES**

- 12'x96"x6'9" Eby
  - 14'x96"x6'3" Eby
  - 9'x94"x6'9" Eby w/Deck Rail
  - 19'x96" Eby w/Deck Rail
  - 15'x96" Eby
  - 10'x96"x6'6" Eby
- Above Bodies Would Make Great Poultry Bodies*

**NEW LIVE  
FLOOR BODY**

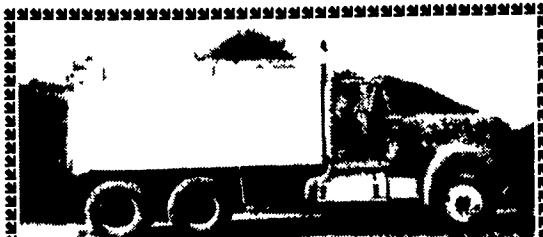
- Eby 26' Long x 96" wide, 90" high - Keith Two Way Floor with Tow Motor Package Electric Tarp

**GOOSENECKS**

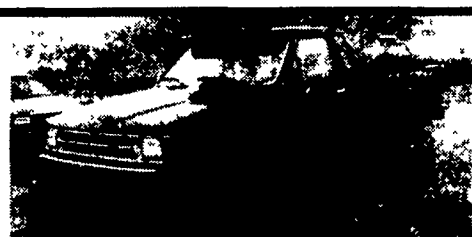
- 1985 4 Star Alum. 12'x7' x6'9" Bumper Hitch

**M.H. EBY, INC.**

1194 Main St.  
(Route 23)  
Blue Ball, PA 17506  
(717) 354-4971  
(800) 292-4752  
4435 State Route 29  
West Jefferson,  
OH 43162  
(614) 879-6901  
(800) 752-0507



85 Western Star T/A Dump, 315 Cummins, 13 Sp, 14' Aluminum Bed, 46000# R A 14,000# FA \$20,000 Weaver Mulch 610/383-6818, Eve. 610/383-7710



1988 Toyota Pickup Ext. Cab 4x4, V6, AT, A/C, Nice Shape, Runs Excellent, 122,000 Miles, \*2,995

**717-361-9296**

- 1980 Mack 10 wheeler dump, 300, 10 speed w/1 way 11-1/2' snowblade.....\$11,500
- 1979 Chevy C70 dump, 366, 5+2 speed, w/Myers 10' 2-way blade, tailgate salt cinder.....\$3,500
- Ford F350, 4x6, Boss V-plow, in-bed salt cinder. . \$9,500
- Austin Western 6 wheel drive articulating grader, 11' 1-way blade on front, 11' wing plow, Detroit power.....\$11,500
- Fiat Allis 745B articulating loader ..... \$13,500
- 1980 Load King fold down detach trailer, double drop, 24' well ..... \$7,500

**717-657-1516** Offers welcomed

**FLATBED  
BODIES**

Lengths to 32', choice of 5 widths.

**GRAIN BODIES**

Lengths to 24', landscape and general purpose dumps to 12'.

**LANDSCAPE BODIES**

Lengths to 12'. We'll build to your specs!

Eby is the leading manufacturer of aluminum bodies and trailers for agri-transportation. Our products are designed for superior strength, reduced weight for greater payload capacity, minimum maintenance and higher resale value. In addition to premium standard features, we offer full custom options built to your specs.



**IN ALUMINUM BODIES  
EBY BUILDS IT**

**Blue Ball, PA  
800-292-4752**

**ALUMINUM  
DUMP  
TRAILERS  
FOR SALE.  
MANY SIZES  
AVAILABLE.  
610-921-1971**

**MOTORS  
New & Rebuilt  
350, 366, 427, 454  
6.2 Diesels  
Rebuilt & Used  
Will Install  
717-762-6415**

**CATTLE  
TRUCK  
1978, with second  
motor, good rubber.  
Diesel - Automatic,  
22 ft. alum. bed.  
Ready to go.  
Inspected until Nov.  
Call:  
717/626-8653**

**BRENNER**

**PHONE: 717-232-4271**

**www.brennerdodge.com Fax: 717-233-8221**

**RON JACKMAN**

Business Link Account Manager

**The New Commercial Sales Group**

Harrisburg's Only BusinessLink Dealer

"Saving the Small Business  
Owner Time, Money & Hassles"

**RAY MARINO**

Business Link Account Manager

New from Dodge  
**Dodge SchoolVan transports  
our future smartly and safely.**

**14 Passengers  
and the Driver!!**

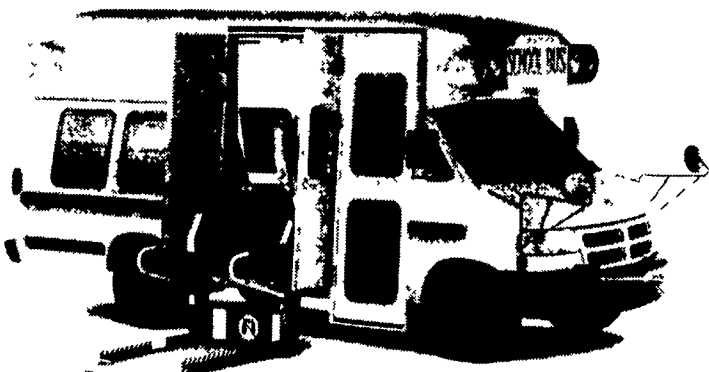
SchoolVan complies with National Highway  
Traffic Safety Administration (NHTSA) &  
Federal Motor Vehicle Safety



**Dodge Different.**

**Is it time to Replace that  
15 Passenger Van?**

This is the only available Van that is completely in  
compliance with both State and Federal guidelines.



1812-1830 Paxton Street, Harrisburg, PA 17104

SchoolVan fully complies with  
NHTSA's FMVSS standards.