

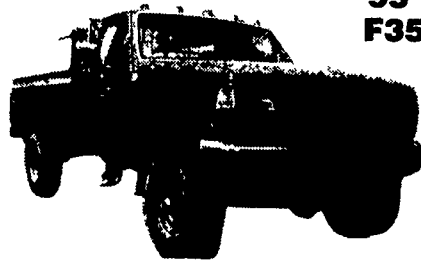
THE HONDRU EXPERIENCE

OVER 200 TRUCKS AVAILABLE FROM OUR 4 DEALERSHIPS

E-TOWN CHEVROLET

Oldsmobile Pontiac
Route 230 E-Town • 717-361-7776

95 FORD F350 4x4



V-8, Auto

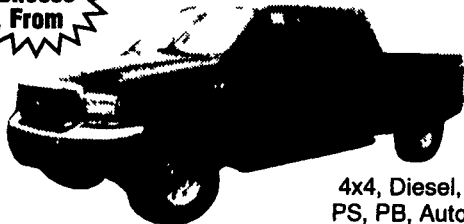
- 98 Chevy K1500, V8, PW&L, Auto, AC, Addt Tilt, Cruise
- 97 Pontiac Bonneville, Auto, AC, PS, PB, PW&L
- 97 Pontiac Grand Am GT Coupe, 5 Speed
- 97 Ford Mustang GT, 5 Speed, V-8, Leather, 3,000 Miles
- 96 Dodge Ram Club Cab, Cummins Diesel, SLT
- 96 Olds Cutlass Sierra, Equipped, 27,000 Miles
- 95 Ford F250 4x4 Super Cab, V-8, Auto, AC
- 95 Chevy K1500 Ext Cab, V-8, Auto, Equipped

PHILLIPS FORD

Route 72 Manheim • 717-665-3551

2000 FORD F250 SUPER DUTY CREW CAB

10 To Choose From



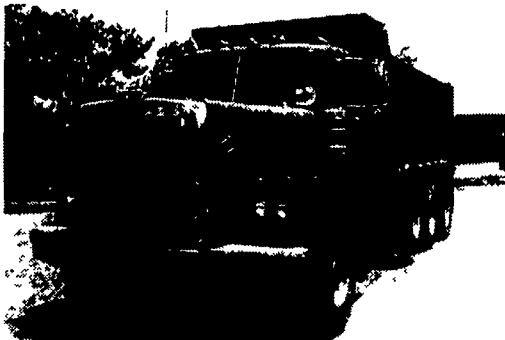
4x4, Diesel, PS, PB, Auto

- 00 Ford F150 Super Cab, 4x4 #OP36A
- 99 Ford F350 Cab & Chassis, Diesel #OF712A
- 98 Ford Club Wagon XLT #OPO58A
- 98 Expedition, Eddie Bauer #OPOS9A
- 97 Ford F150 4x4, 41,000 Miles, V8, 5 Speed #OF711A
- 97 Ford Ranger Super Cab 4x4 3 To Choose From
- 96 Ford F150, 4x4, Auto #OF743A
- 96 Ford Bronco, V8 3 to Choose From

MOTOR TRUCK EQUIP.



1973 AUTOCAR TRIAXLE, NTC 350
w/3 Stage Jake, Hendrickson Spring, 13 Spd. Road Ranger, 46K Rears, 15'6" Steel Body, Stk #TD072426.... **\$9,900**



1975 DIAMOND REO, Cummins Power w/Jake, Fuller, 13 Spd., Hendrickson Beam Spoke Wheels, 385 Flotations, Newer Steel Body, Stk #TD605716... **\$5,900**



1993 KENWORTH T600, DDEC350, 9 Direct w/3.36 Ratio, Steel Wheels, 60" Flat Top, Stk #PD578598..... **\$14,900**
570-347-5671
Ask for Steve
1-800-692-7493

1990 F450 Super Duty dump truck, 5-spd, 460 engine, new paint, 58,000 mi, gooseneck & hd receiver hitches, \$10,500.
2000 Hudson tri-axle gooseneck, 23,000 gv, 23' w/5' beavertail & ramps, \$5200.
215-258-1127.

85 Ford F-600 16 Foot Box Great Work Truck 21k GVW 5 Spd, Gas Eng. Must Sell. \$3900. 610-647-8521

Bulk feed body, 1993 Pinson, 3 pockets, hyd. drive, exc. shape, can deliver, \$8000 OBO. 410/957-3476.

Master Mechanic tool set, large Mac 9-dr. bot. tom, 10-dr upper box. Proto side box. Many air tools & specialty tools. 717/597-5151 evenings.

Septic Tank Truck, '69 White, Cummins eng, 2200 gal, SS tank, Gordon Rupp pump w/back flush, \$4500. '89 Ford 350 utility truck, Reading bed, 5 spd w/OD, 460 eng, low mileage, good cond, \$8500. 717-225-1888

1962 Mack Thermodyne dsl 6-wheeler w/18' Midwest grain body & twin cyl. Harsh hoist, all good condition, \$5000. 302/398-8754.

Travel Trailer '97, 30', Has it All! Exc Condition \$11,000 717-755-7473

'95 Ford XL F150 short bed, 4x4, super cab, 300 EFI, 5 spd., PS, PB, air, AM-FM cass., new radials, \$11,500. 717-733-2873

Dry storage trailer, 48x102, could be repaired to use on road, \$2000 obo. 1-800-839-3338

1971 Int dump truck, single axle, VS549 air brakes, \$3500 obo. 610-287-7894

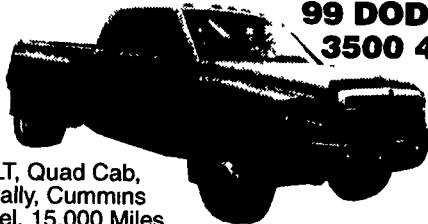
'93 Chevy Cheyenne 2500, 3/4 ton pickup, 305 auto, PS, PB, 7,200 GVW, blue, 128,000 miles, latest inspection, good work truck, \$3,675. 717-733-2873

STOCK GOOSENECK 16x6x6", STOCK BUMPER 16x6x6" 3 HORSE SLANT OPEN STOCK w/dressing rm & rear tack. Used 2 horse 1986, call for pricing. New & Used trailers available. NETCO Trailer Sales, 410-838-1282.

E-TOWN DODGE

Route 230 E-Town • 717-367-6644

99 DODGE 3500 4x4



SLT, Quad Cab, Dually, Cummins Diesel, 15,000 Miles

97 DODGE RAM 2500

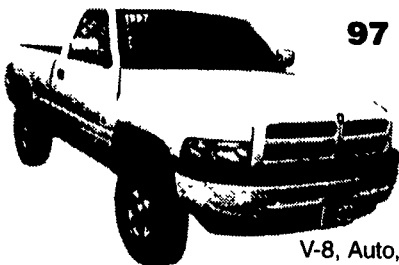


4x4, V-8, Auto, AC, SLT

MANHEIM CHRYSLER PLYMOUTH GMC

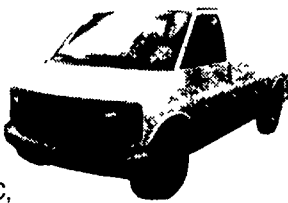
Route 72 Manheim • 717-665-2473

97 Dodge Sport



V-8, Auto, AC, PW&L, Tilt & Cruise, AM-FM

2000 CHEVY EXPRESS C2500 Cargo Van



V-8, Auto, PS, PB, AC, A Work Horse!

All prices include Rebates, Exclude Tax, Tag and \$40 Dock Fee

LOADS OF USED PICKUPS CALL ANY STORE FOR DETAILS

Email - hondruauto@aol.com

OVER 20 CHASSIS IMMEDIATELY AVAILABLE FOR BODY INSTALLATION AT OUR LOCAL BODY COMPANIES!

AL HAMILTON USED TRUCK SALES

P.O. Box 157 • 55 Doe Run Road • Manheim, PA 17545

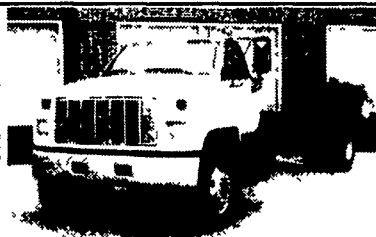
Phone: 717-665-7145 • Fax 717-665-2137

★★ "CLEANEST TRUCKS AROUND" ★★

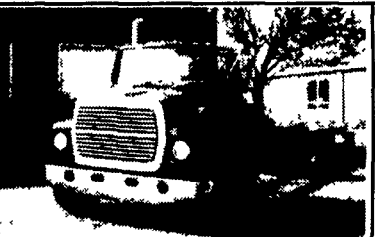
SUMMER SALE - All Prices Reduced!



'96 CHEVY KODIAK
C&C, 3116 Cat, 250 HP, 6 Spd. Trans., A/C, Air Brakes, 184 W.B., 108 C.A., 33,000 GVW, Pintle Hook w/Air Hook-Up, 52,000 Actual Miles
\$26,500



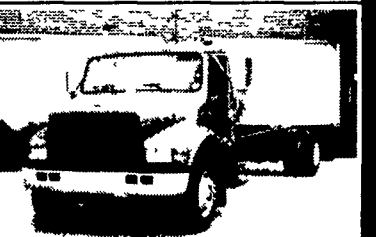
'94 GMC TOP KICK
C&C, 3116 CAT, 215 HP, 6 Spd. Trans., A/C, Air Brakes, 246 W.B., 168 C.A., 35,000 GVW
\$21,500



'86 FORD LN8000
C&C, 3208T, 250 HP, 5 Spd. Trans., 2 Spd. Rear, Custom Int., 33,000 GVW, 222 W.B., 156 C.A., Air Brakes
\$15,500



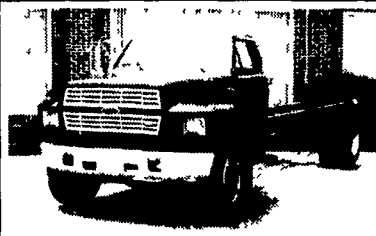
'86 FORD LN8000 16'
Flat Dump, 3208 Cat, 210 HP, 5 Spd. Trans., 2 Spd. Rear, 33,000 GVW, Air Brakes
\$19,500



'93 INT 4900
C&C, DT 466, 6 Spd Trans, Custom Int, A/C 32,000 GVW, 254 WB 136 C A
\$19,500



'89 MACK
New 10' Dump, E-6 Mack, 275 HP, 9 Spd. Trans, Fuller 35,000 GVW
\$29,500



'85 FORD F-700
C&C, 370 Gas, 5 Spd. Trans., 2 Spd. Rear, Hydraulic Brakes, 225 W.B., 150 C.A.
\$10,500



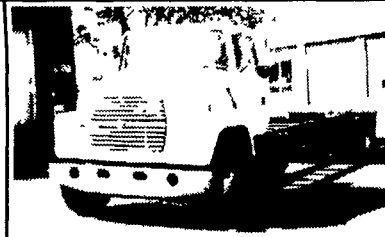
'94 INT. 4700
C&C, Low Profile, DT-408, 190 HP, 6+1 Trans., Hyd. Brakes, Custom Int., A/C, 176 W.B., 108 C.A., 25,500 GVW
\$19,500



'92 FORD LN8000
C&C, 7.8 Ford Diesel, 210 HP, 6 Spd. Trans., Custom Cab, Air Brakes, 234 W.B., 168 C.A., 33,000 GVW
\$18,500



'94 FORD F700
C&C, 429 Gas, 5 Spd Trans, 14,000 Actual Miles, 207 W B, 140 C A., Like New
\$19,500



'95 FORD LN8000
C&C, 8.3 Cummins, 210 HP, 6 Sp Trans., Custom Int, Air Brakes, A/C, 260 W B, 192 C A, 35,000 GVW
\$23,500